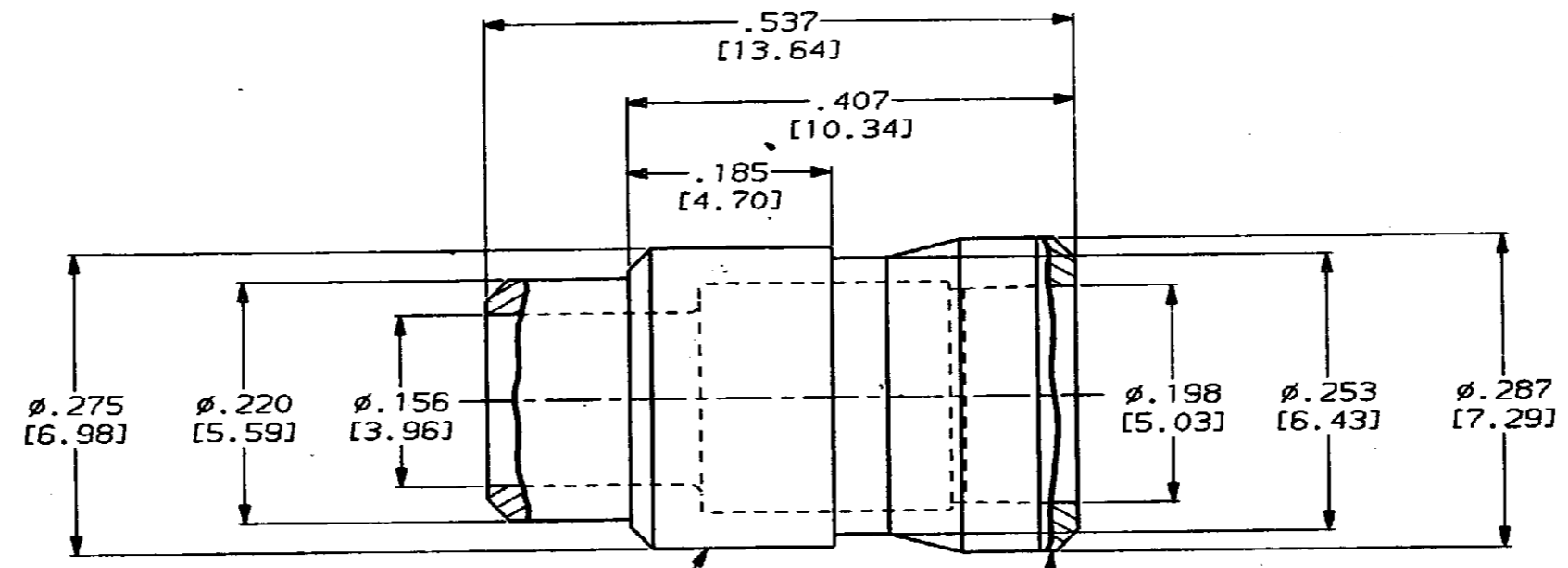


DRAWING MADE IN THIRD ANGLE PROJECTION

THIS DRAWING IS UNPUBLISHED. RELEASED FOR PUBLICATION .19  
 © COPYRIGHT 19 BY AMP INCORPORATED. ALL INTERNATIONAL RIGHTS RESERVED.

|                      |           |            |    |   |           |     |                             |        |       |
|----------------------|-----------|------------|----|---|-----------|-----|-----------------------------|--------|-------|
| PROD<br>4971<br>CODE | LOC<br>DF | DIST<br>AO | PJ | F | REVISIONS |     |                             | DATE   | APPD  |
|                      |           |            |    |   | ZONE      | LTR | DESCRIPTION                 |        |       |
|                      |           |            |    |   | 0         |     | RELEASED PER NPR 89-0317 TW | 8-8-89 | SW/89 |



REDUCER BODY  
 MATL: LEADED COPPER  
 FINISH: .000015 MIN GOLD  
 PER MIL-G-45204 OVER .000040  
 MIN NICKEL PER QQ-N-290

END CAP  
 MATL: POLYPROPYLENE

1. DIMENSIONS IN BRACKETS ARE IN MILLIMETERS. METRIC EQUIVALENTS ARE BASED UPON 1.00 INCH = 25.4 mm.

|   |  |  |                      |
|---|--|--|----------------------|
|   |  | 446743-1   |                      |
|   |  | PART NO  |                      |
| DO NOT SCALE PRINT. UNLESS SPECIFIED DIMENSIONS IN INCHES (mm) TOLERANCES ON:<br>2 PLC DEC ± .0005 (0.127)<br>3 PLC DEC ± .0005 (0.127)<br>ANGLES ± |  | AMP INCORPORATED Harrisburg, Pa. 17105                   |                      |
| MATERIAL<br>SEE CALLOUTS  |  | NAME<br>PIN CAVITY REDUCER, ARINC 600, SIZE 5 TO SIZE 12 |                      |
| FINISH<br>SEE CALLOUTS  |  | SIZE<br><b>B</b>   | FSCM NO<br>00779     |
|   |  | SCALE<br>8:1   | DRAWING NO<br>446743 |
|   |  | SHEET 1 OF 1   |                      |

CUSTOMER DRAWING