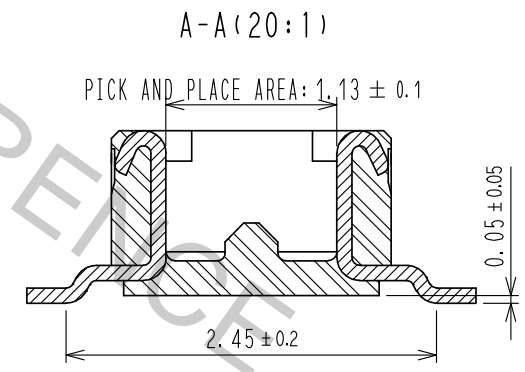
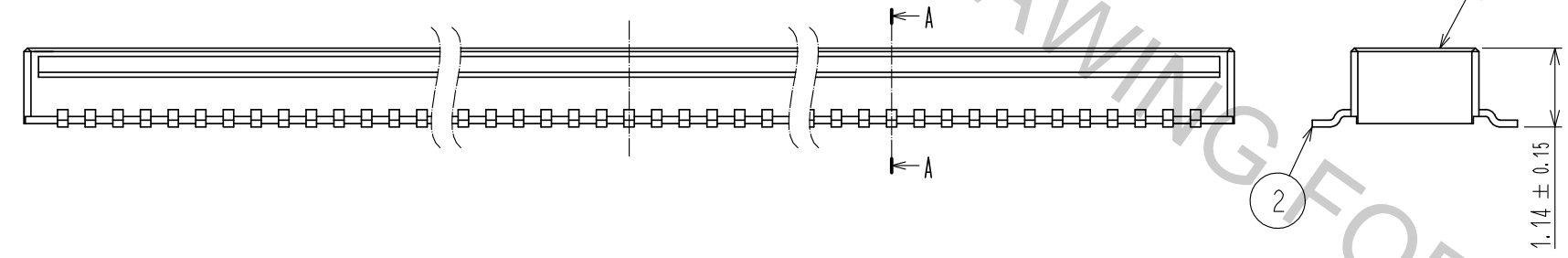


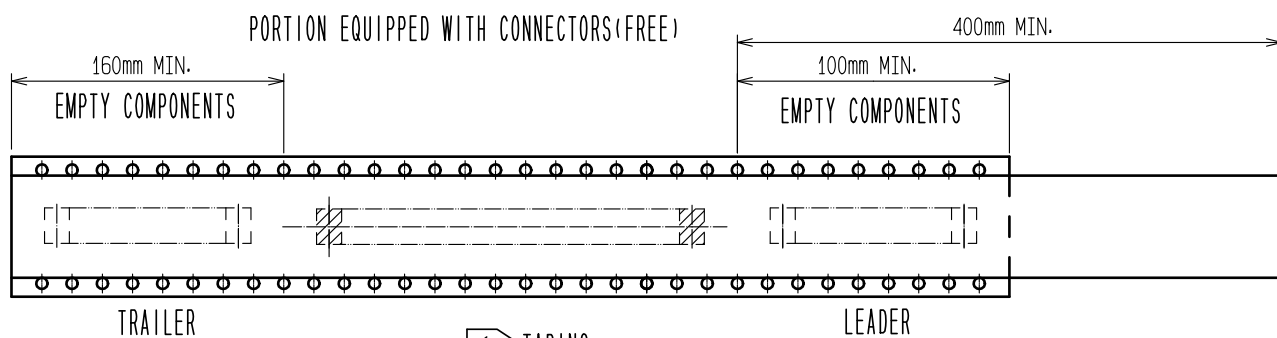
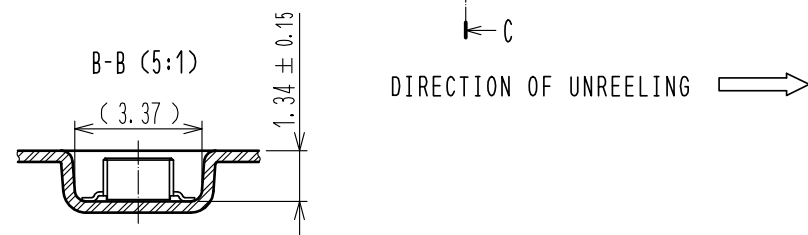
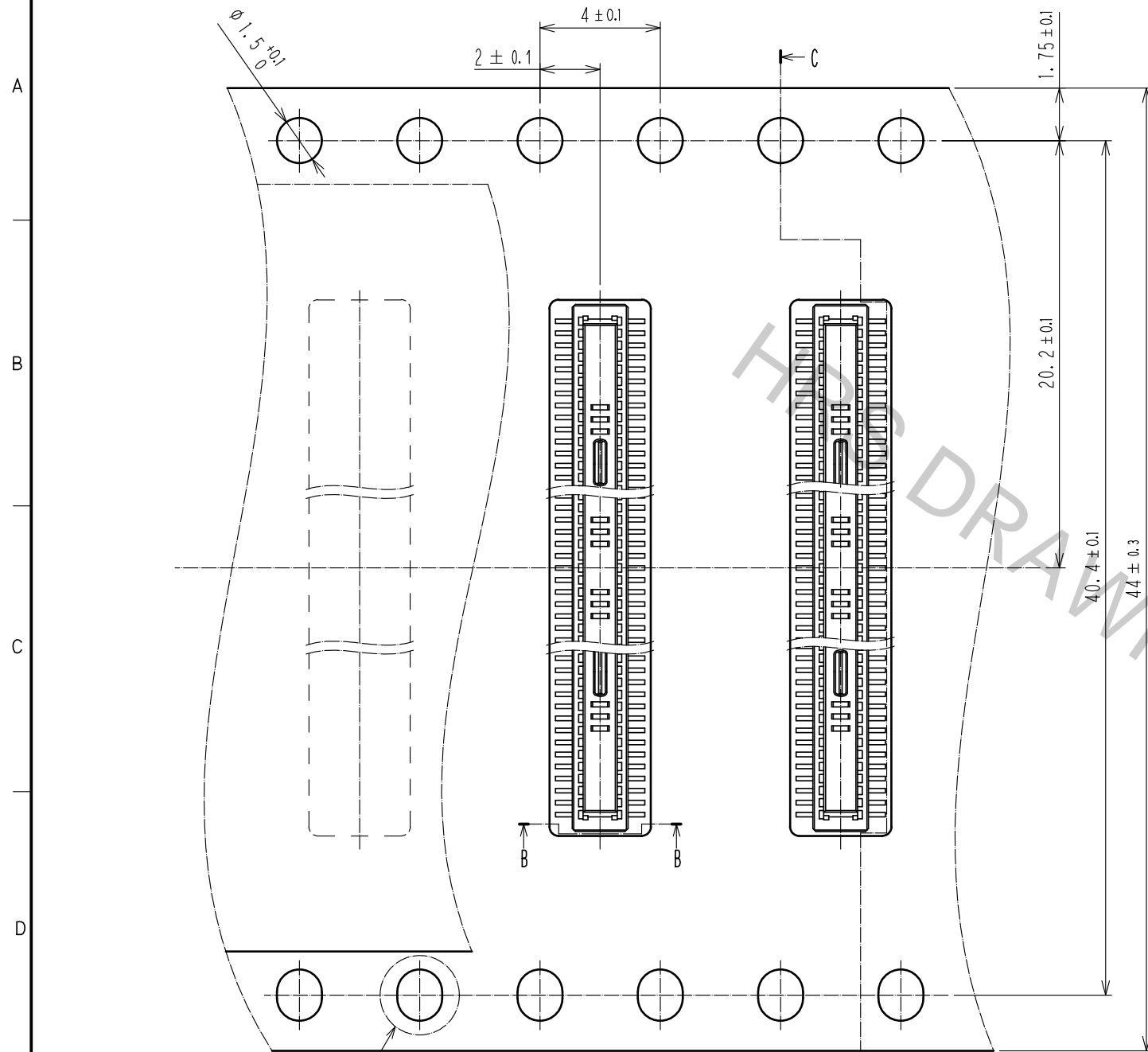
RECOMMENDED METAL MASK THICKNESS: 120 μm
 RECOMMENDED METAL MASK OPENING RATIO: 80% FOR LEAD PAD



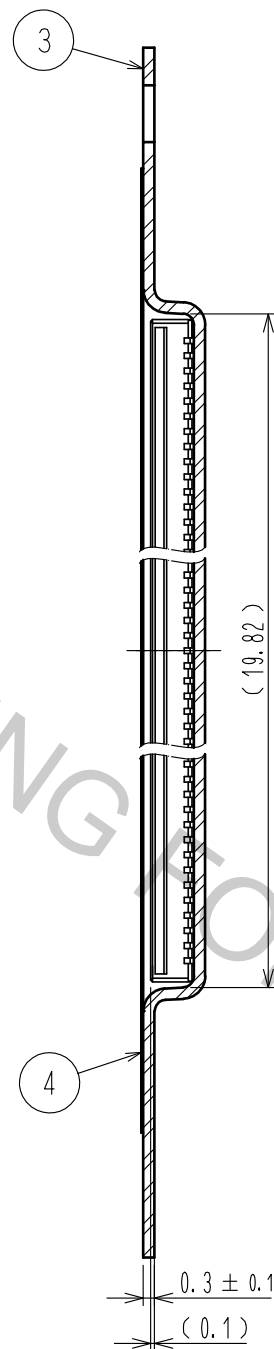
- NOTES) 1. ALL LEADS CO-PLANARITY SHALL BE 0.1mm MAX.
 2 EACH ONE CONTACT AT 4 CORNERS SHALL BE REINFORCED METAL FITTINGS.
 3 HRS MARK AND CAV NO. IS INDICATED IN APPROXI POSITION SHOWN.

2	PHOSPHOR BRONZE	CONTACT AREA: GOLD 0.05 μm MIN	6	PS	CLEAR, REINFORCEMENT COLLAR			
		SMT LEAD: GOLD 0.05 μm MIN	5	PS	BLACK, PLASTICREEL			
		UNDERPLATING: NICKEL 1 μm MIN	4	POLYESTER	CLEAR, COVER TAPE			
1	LCP	BLACK, UL94V-0	3	PS	CLEAR, EMBOSSED CARRIER TAPE			
NO.	MATERIAL	FINISH . REMARKS	NO.	MATERIAL	FINISH . REMARKS			
UNITS mm		SCALE 10 : 1		DESCRIPTION OF REVISIONS		DESIGNED	CHECKED	DATE
HRS HIROSE ELECTRIC CO., LTD.		APPROVED : MO. ISHIDA	16. 03. 30	DRAWING NO.		EDC-319485-58-01		
		CHECED : TS. MIYAZAKI	16. 03. 30	PART NO.		DF40C-90DP-0.4V(58)		
		DESIGNED : SH. HOSODA	16. 03. 30	CODE NO.		CL684-4125-0-58		
		DRAWN : KR. AJITO	16. 03. 30					

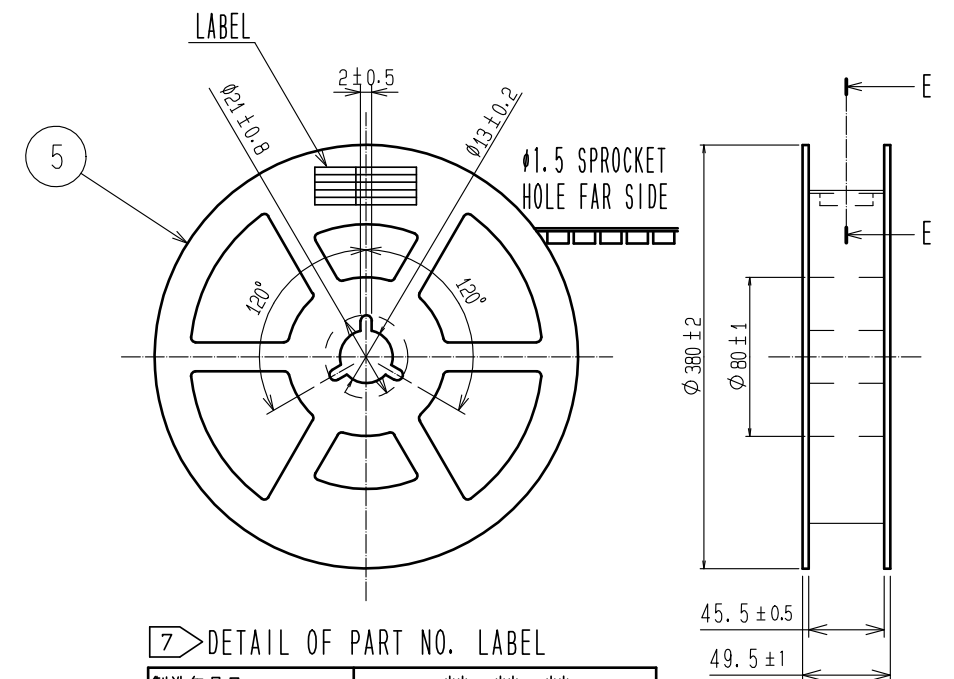
EMBOSSED CARRIER TAPE DIMENSIONS (FREE)



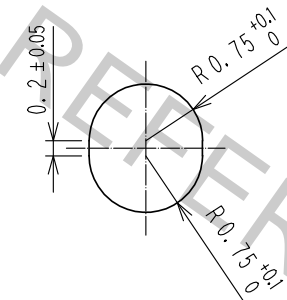
C-C (5:1)



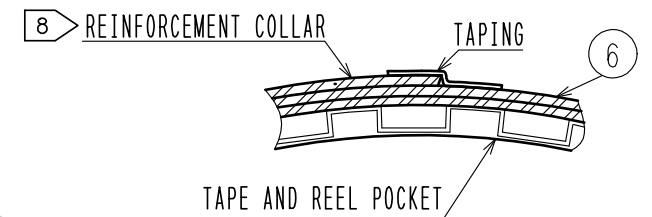
STYLE AND DIMENSIONS OF REEL (FREE)



D (10:1)



E-E (FREE)



- NOTES
4. PER REEL 1000 CONNECTORS.
 5. THE DIMENSIONS IN PARENTHESES ARE FOR REFERENCE.
 6. REFER TO JIS C 0806(IEC 60286-3)(PACKING OF COMPONENTS FOR AUTOMATIC HANDLING)
 7. DETAIL OF PART NO. LABEL IS WRITTEN IN JAPANESE. PART NO. LABEL DESCRIBES THE FOLLOWING INFORMATION FROM TOP.
 PRODUCTION DATE:
 PRODUCT CODE: CL684-4125-0-58
 PART NUMBER: DF40C-90DP-0.4V(58)
 NUMBER OF PIECES: 1000 PIECES
 SUPPLIER NAME: HIROSE ELECTRIC CO., LTD.
 8. AFTER PACKAGING, ROLL 2 METERS OF THE REINFORCEMENT COLLAR TO OUTER CIRCUMFERENCE OF TAPE AND REEL POCKET, AND TAPE DOWN AT THE END THE COLLAR.

HRS	DRAWING NO.	EDC-319485-58-01
	PART NO.	DF40C-90DP-0.4V(58)
	CODE NO.	CL684-4125-0-58
		2/2