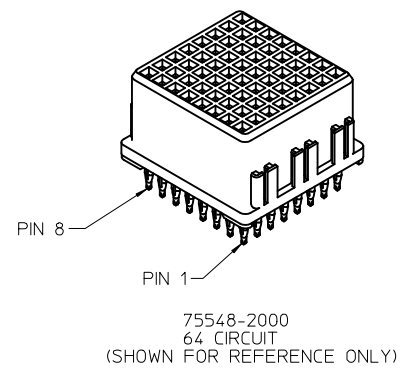
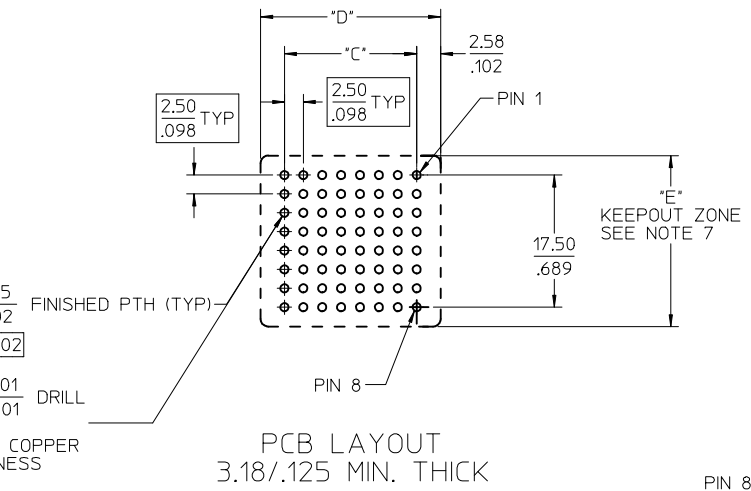
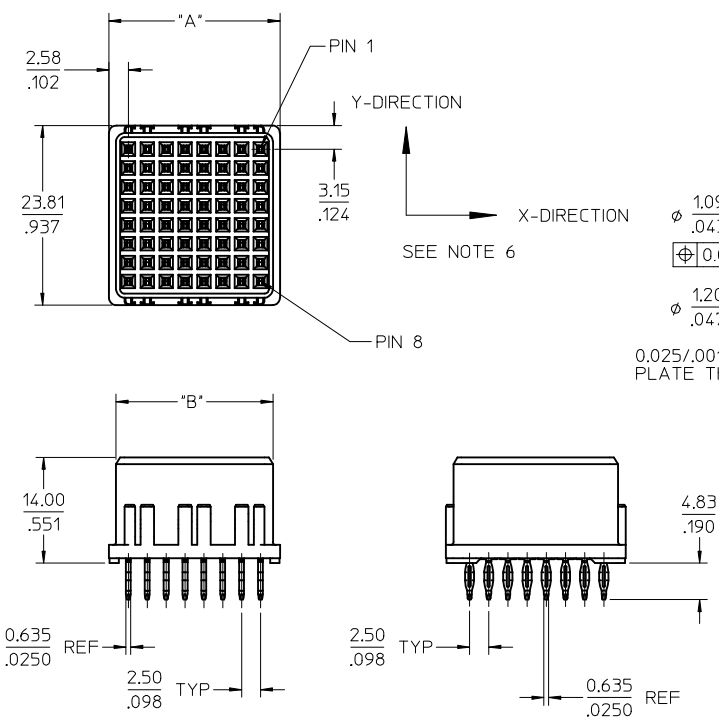


PART NUMBER	CIRCUIT SIZE	DIM "A"	DIM "B"	DIM "C"	DIM "D"	MATING MODULE
75548-6000	64	22.66/.892	20.76/.817	17.50/.689	27.50/1.08	75568-1000
75548-6056	56	20.16/.794	18.26/.719	15.00/.591	25.00/.984	75568-1056
75548-6048	48	17.66/.695	15.26/.620	12.50/.492	22.50/.885	75568-1048
75548-6040	40	15.16/.597	13.26/.522	10.00/.394	20.00/.787	75568-1040
75548-6032	32	12.66/.498	10.76/.424	7.50/.295	17.50/.689	75568-1032
75548-6024	24	10.16/.400	8.26/.325	5.00/.197	15.00/.590	75568-1024

30μ IN MIN SELECT HARD GOLD IN CONTACT AREA WITH
100μ IN MIN SELECT TIN IN TAIL AREA OVER
50μ IN MIN NICKEL OVERALL

- NOTES:
- MATERIALS:
 - HOUSING: 30% GLASS FILLED, LCP 94V-0, COLOR: BLACK
 - TERMINALS: COPPER ALLOY
 - SEE CHART FOR REFERENCE DOCUMENTS
 - AVERAGE INSERTION FORCE INTO PCB IS 8.2 Kg/18 LBS PER TAIL
 - MODULE ASSEMBLY IS RoHS COMPLIANT
 - GATHERABILITY: ±0.65/.026 X-DIRECTION
±1.30/.051 Y-DIRECTION
 - TERMINAL RETENTION INTO HOUSING 0.45 Kg/1.0 LB
 - KEEPOUT ZONE DIMENSION "E":
25.00/.984 ON PCB SURFACE
26.00/1.024 AT 3.50/1.38 ABOVE PCB SURFACE
46.00/1.811 AT 9.00/3.54 ABOVE PCB SURFACE
 - RECEPTACLE MATES WITH PLUG ASSEMBLY: 75568-5***



REFERENCE DOCUMENTS	
PS-75431-999	PRODUCT SPECIFICATION: PERFORMANCE AND RATINGS
SD-75541-***	MODULE CONFIGURATION DRAWING
AS-75541-0000	APPLICATION SPECIFICATION

REMOVE TIN/LEAD EC NO: UCP2013-4351 DRWN:WHIPPLE 2013/04/10 CHKD:BANURA 2014/02/20 APPR:SMILLER 2014/04/14	QUALITY SYMBOLS $\nabla=0$ $\nabla=0$ $\nabla=0$	GENERAL TOLERANCES (UNLESS SPECIFIED)		DIMENSION STYLE		SCALE	DESIGN UNITS	THIRD ANGLE PROJECTION			
				MM/IN		2:1	METRIC				
				mm	INCH	DRAWN BY		DATE		TITLE	
				4 PLACES ± ---	± ---	AD RATNOL		2005/04/11		EXTREME POWERMASS SIGNAL MODULE RECEPTACLE	
		3 PLACES ± ---	± .008	CHECKED BY		DATE					
		2 PLACES ± 0.20	± .013	M DATA		2005/04/11					
		1 PLACE ± 0.33	± ---	APPROVED BY		DATE		DOCUMENT NO. SD-75548-100 SHEET NO. 1 OF 1			
		0 PLACE ±	±	APATEL		2005/04/11					
		ANGULAR ±1/2°		MATERIAL NO.		DOCUMENT NO.					
		DRAFT WHERE APPLICABLE MUST REMAIN WITHIN DIMENSIONS		SEE CHART		SD-75548-100					
				SIZE C		THIS DRAWING CONTAINS INFORMATION THAT IS PROPRIETARY TO MOLEX INCORPORATED AND SHOULD NOT BE USED WITHOUT WRITTEN PERMISSION					