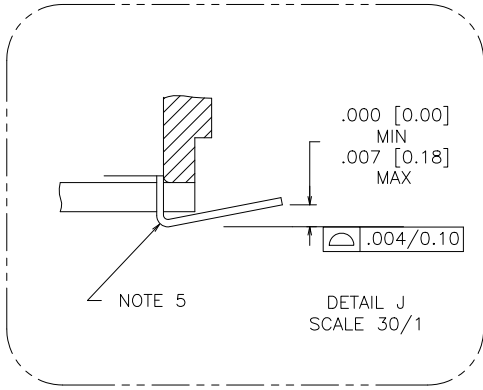
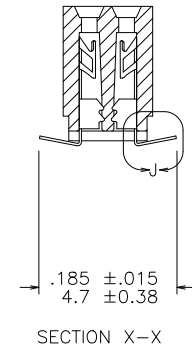
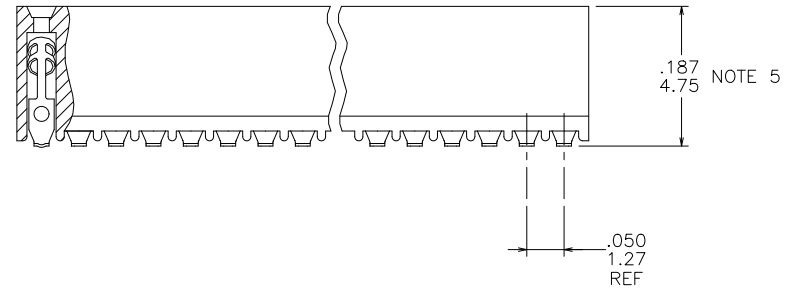
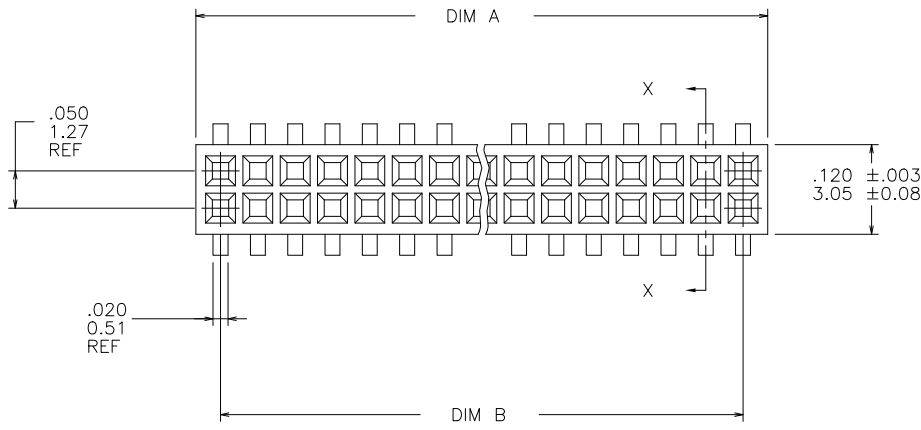


PRODUCT NUMBER
SEE TABLE



mat'l. code				surface		tolerance		projection		product family	
-				ISO 1302 ✓		ISO 406 ISO 1101				RIBCAGE	
ltr	ecn no	dr	date	tolerances unless otherwise specified						title	
S	V10994	DLW	3/9/01	angles	linear	.XX±.01/0.3		INCH/MM		.050/1.27 CC VERT CARD	
T	V11674	CRG	6/22/01	0°±2°		.XXX±.005/0.13		scale 4:1		CONN. ASSY. SURFACE MOUNT	
U	M05-0088	MHT	5/12/05			.XXXX±.0020/0.051				dwg no	
V	M06-0225	ERE	6/12/06	dr	M. CLOUSER	6/26/91				sheet 1 of 3 size	
W	M06-0370	MHT	9/26/06	engr	D. WHITING	6/26/91				87021	
X	M09-0058	CMR	4/06/09	chr	C. GINGRICH	6/26/91				A3	
Y	ELX-N-010020	YO	1/30/12	appd	D. WHITING	6/26/91				type Product Customer Drawing	
sheet	revision	Y	Y	Y							
index	sheet	1	2	3							

PRODUCT NO. NOTE 8	SIZE	DIM A	DIM B	SPECIAL PACKAGING	TAPE WIDTH		PIECES PER REEL
						PITCH	
87021-605	2 X 5	.266/6.756	.200/5.08	NOTE 6	24MM	12MM	750
-610	2 X 10	.516/13.106	.450/11.43	NOTE 6	24MM	12MM	750
-615	2 X 15	.766/19.456	.700/17.78	NOTE 6	44MM	12MM	500
-620	2 X 20	1.016/25.806	.950/24.13	NOTE 6	44MM	12MM	500
-625	2 X 25	1.266/32.156	1.200/30.48	NOTE 6	44MM	12MM	500
-630	2 X 30	1.516/38.506	1.450/36.83	NO	_____	_____	---
-635	2 X 35	1.766/44.856	1.700/43.18	NO	_____	_____	---
-640	2 X 40	2.016/51.206	1.950/49.53	NO	_____	_____	---
-645	2 X 45	2.266/57.556	2.200/55.88	NO	_____	_____	---
87021-650	2 X 50	2.516/63.906	2.450/62.23	NO	_____	_____	---

NOTES :

- ① HOUSING MATERIAL :
GLASS FILLED THERMOPLASTIC FLAME RETARDANT PER UL94V-0.
COLOR : NATURAL
- ② TERMINAL MATERIAL : BeCu
- ③ TERMINAL PLATING :
30u"/.76u MIN HARD GOLD OR GXT OVER Ni ON CONTACT ZONES.
100u"/2.54u MIN Sn OVER Ni IN SOLDERING ZONES.
OTHERWISE GOLD FLASH OR UNPLATED.
- 4 APPLICATION INFORMATION :
 - A. RECOMMENDED MOUNTING PAD PATTERN IS SHOWN IN FIGURE "A".
 - B. MATING PINS TO BE .0176/0.447 TO .0181/0.459 DIA.
 - C. MATING PIN TIPS TO BE IN TRUE POSITION TO MATING GRID WITHIN .008/0.20 DIA.
 - D. SUGGESTED MATING PIN LENGTH .130/3.30 ±.010/0.25.
- ⑤ LEAD TIPS TO BE ABOVE HEEL, UP TO .007/0.18 MAX.
COPLANARITY TO BE MEASURED AT LOWEST POINT (HEEL).
- ⑥ ADD "TR" TO END OF DASH NUMBER FOR TAPE AND REEL PACKAGE WITH CAP. TOOLED ONLY FOR NOTED CONNECTORS.
7. ADD "CT" TO END OF DASH NUMBER FOR CONNECTOR WITH VACUUM CAP IN TUBE.
- ⑧ ADD "LF" SUFFIX AT THE END OF PART NUMBER FOR LEAD FREE OPTION.
9. THE HOUSING WILL WITHSTAND EXPOSURE TO 260°C PEAK TEMPERATURE FOR 20 SECONDS IN A CONVECTION, INFRA-RED OR VAPOR PHASE REFLOW OVEN. SEE APPLICATION NOTE/PROCEDURES IF THEY ARE AVAILABLE.
10. THIS PRODUCT MEETS EUROPEAN UNION DIRECTIVES AND OTHER COUNTRY REGULATION AS DESCRIBED IN GS-22-008.
11. PRODUCT SPEC PER BUS-12-087.

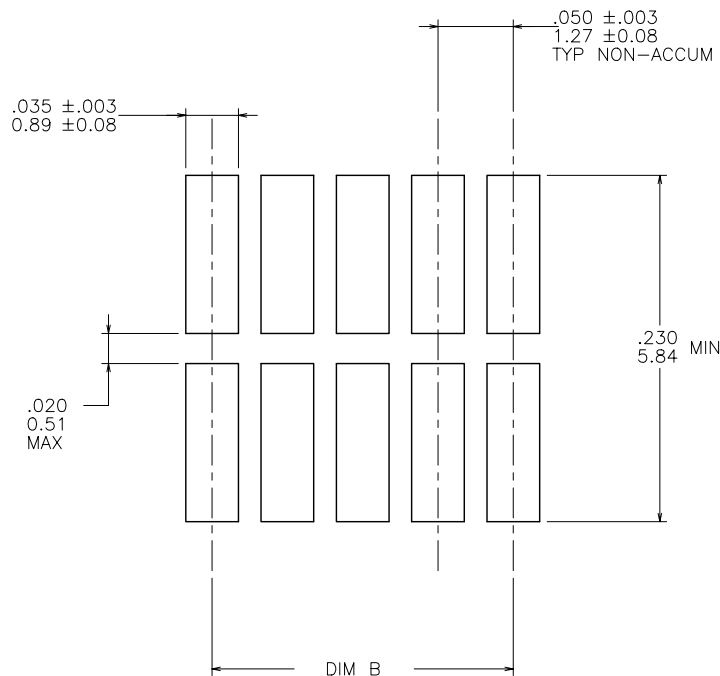


FIGURE "A"
RECOMMENDED PCB
MOUNTING PAD PATTERN

mat'l. code		surface		tolerance		projection		product family	
-		ISO 1302 ✓		ISO 406 ISO 1101				RIBCAGE	
ltr	ecn	no	dr	date		tolerances unless otherwise specified		title	
Y						angles linear $.XX \pm .01 / 0.3$ $.XXX \pm .005 / 0.13$ $.0 \pm 2'$ $.XXX \pm .0020 / 0.051$			
						scale 4:1		.050/1.27 CC VERT CARD CONN. ASSY. SURFACE MOUNT	
				dr		M. CLOUSER 6/26/91		dwg no	
				enrg		D. WHITING 6/26/91		sheet 2 of 3	
				chr		C. GINGRICH 6/26/91		size	
				appd		D. WHITING 6/26/91		87021	
								A3	
								type Product Customer Drawing	
sheet index		revision sheet							

1

2 3

4

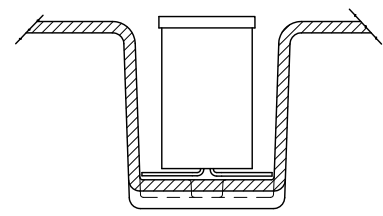
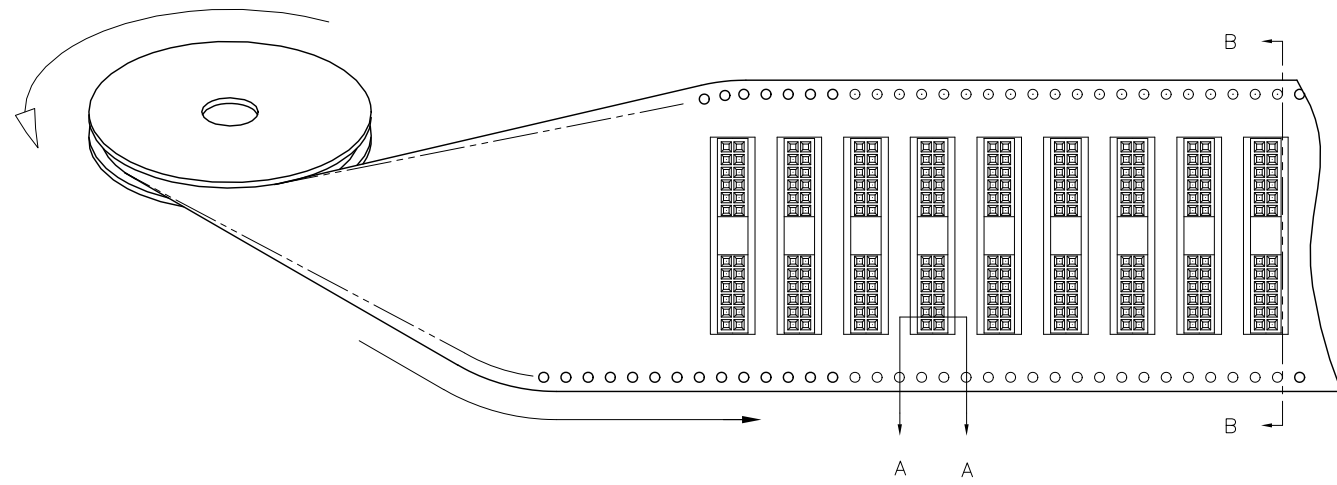
5

6

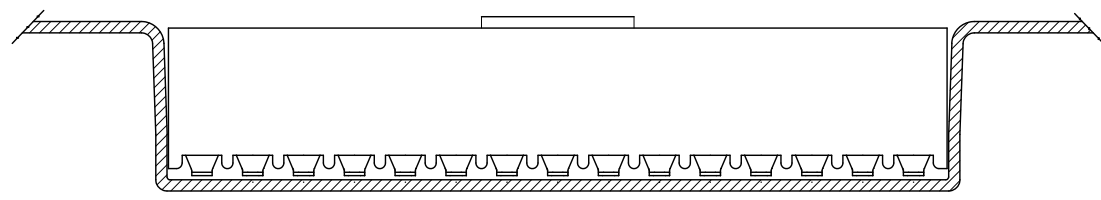
REFERENCE ONLY

TAPE WIDTH'S 32mm AND ABOVE HAS BOTH FEED TRACKS,
BELOW 32mm HAS TOP FEED TRACK ONLY.

UNREELING
DIRECTION



SECTION A-A



SECTION B-B

mat'l. code		surface		tolerance		projection		product family	
-		ISO 1302 ✓		ISO 406 ISO 1101				RIBCAGE	
ltr	ecn	no	dr	date		tolerances unless otherwise specified		title	
Y						angles	linear	.XX±.01/0.3	
						0°±2'		.XXX±.005/0.13	
								.XXX±.0020/0.051	
			dr	M. CLOUSER	6/26/91			INCH/MM	
			enr	D. WHITING	6/26/91			scale 4:1	
			chr	C. GINGRICH	6/26/91				
			appd	D. WHITING	6/26/91			dwg no sheet 3 of 3 size 87021 A3	
								type Product Customer Drawing	

sheet	revision																		
index	sheet																		

Copyright FCI
 FCIconnect.com