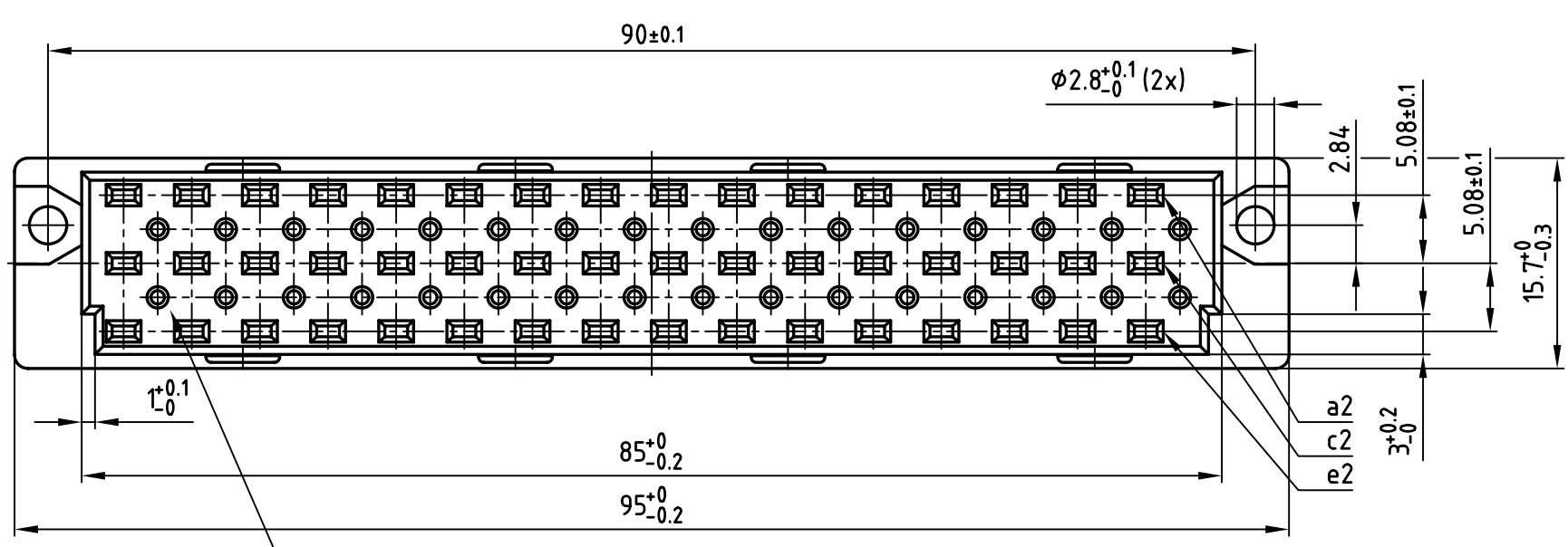
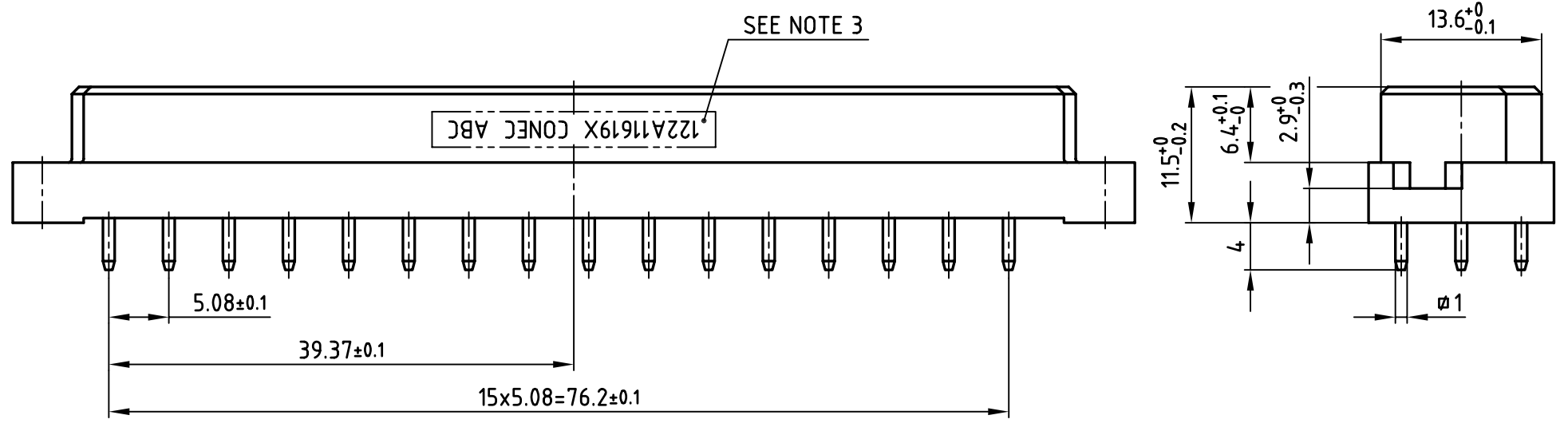


used for: DIN EN 60603-2 TYPE "E"



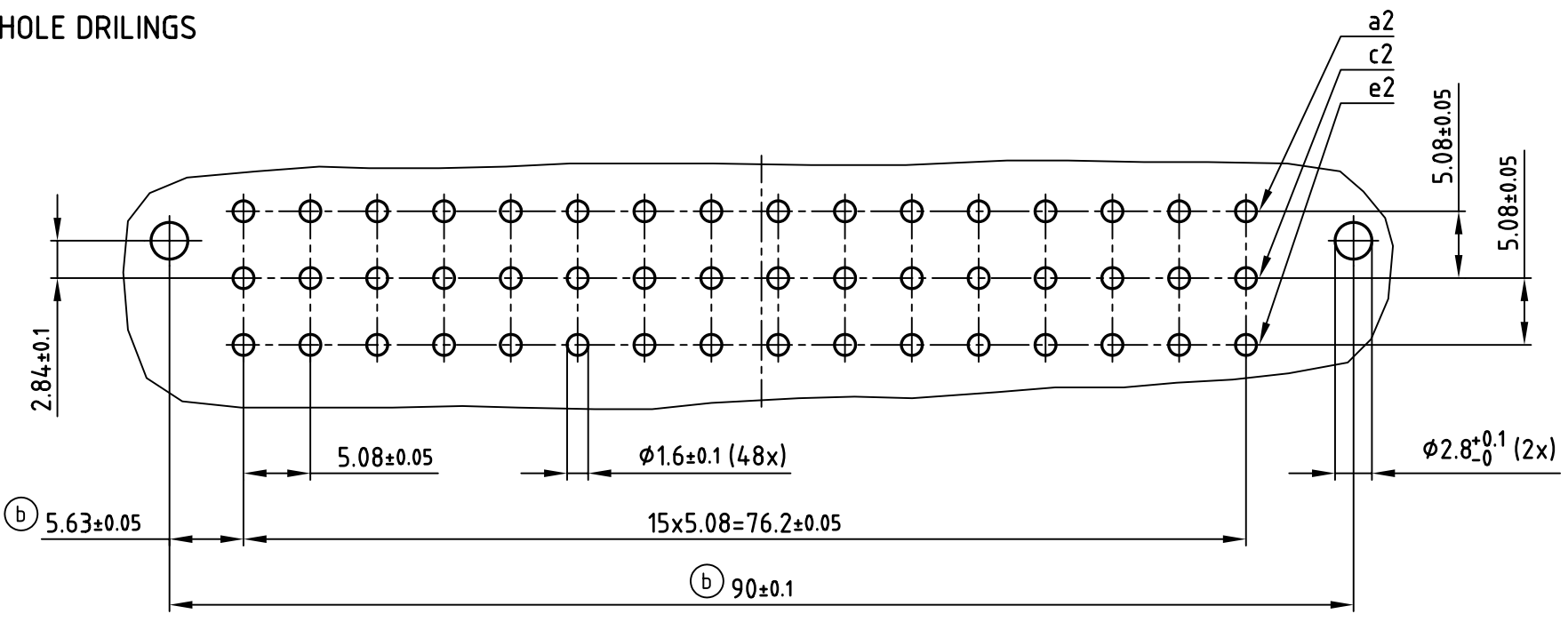
32 HOLES FOR CODE PINS $\phi 1 \times 4.5$ mm DEEP

NOTES:

1. INSULATORS: PBTP UL 94 V-0, GREY
2. CONTACTS: COPPER ALLOY
PLATING: GOLD OVER NICKEL
50 MATING CYCLES
3. CONNECTOR IS PART MARKED: 122A11619X CONEC ABC



P.C.B. HOLE DRILINGS



APPROVAL # FREIGABE # DEBLOCAGE # AUTOR/ZACION # APPROVAL		tolerance		scale: 2:1	
CUSTOMER APPROVAL DATE:		dim. in mm		material: SEE NOTES	
NAME:	TITLE:	2007	date	title:	
		drawn	23.04.	FEMALE CONNECTOR TYPE "E"	
		appd.	24.04.	48pos. SOLDER PIN 4,0mm	
COMPANY NAME:		norm	DIN EN 60603-2	1x1mm	
		d-old		dwg no: AutoCAD 2006	
		2 x b	Ä 3234	DIN-A	
		a	Origin	3	
		rev.	description	sh:1/1	
			date	part no: 122A11619X	
			name		

