

NOTES

1. MATERIAL: PVC
2. APPLICABLE TERMINALS: .250 SLIP-ON RECEPTACLE TERMINALS

35025-28\*0

0 : WHITE COLOR, 60°C, 600V  
 4 : BLUE COLOR, 105°C, 600V

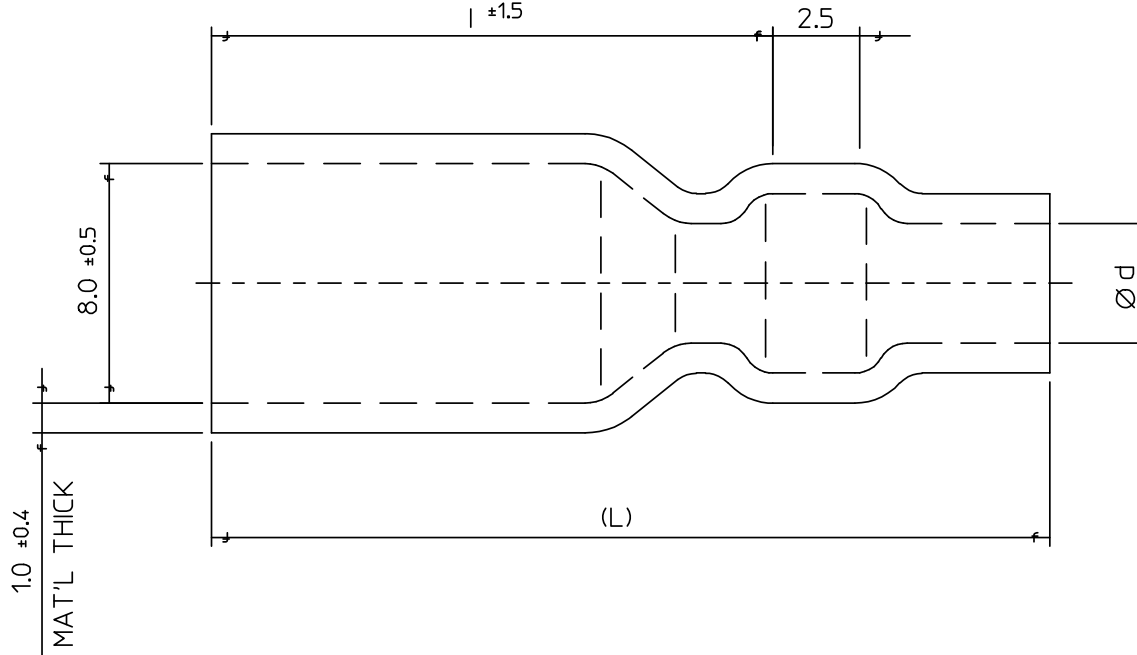
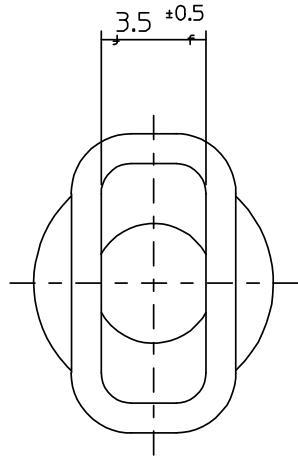


TABLE	ENG.NO.	DIMENSION		
		Ød	l	L
	35025-28*0	Ø 2.8	16.75	24.5
	35025-35*0	Ø 3.5	17.75	25.5
	35025-40*0	Ø 4.0		
	35025-45*0	Ø 4.5		
	35025-48*0	Ø 4.8		

NEW RELEASE  
 EC NO: KOR2008-0194  
 DRWN: JHPARK01 2008/06/03  
 CHKD: WY. YANG 2008/06/03  
 APPR: YUNSIKKIM 2008/06/04

QUALITY SYMBOLS  
 ▽=0  
 ◻=0

GENERAL TOLERANCES (UNLESS SPECIFIED)

	mm	INCH
4 PLACES	± ---	± ---
3 PLACES	± ---	± ---
2 PLACES	± ---	± ---
1 PLACE	± 0.1	± ---

ANGULAR ± 1 °

DRAFT WHERE APPLICABLE MUST REMAIN WITHIN DIMENSIONS

DIMENSION STYLE  
 MM ONLY

DRAWN BY DATE  
 WY. YANG 1996/01/16

CHECKED BY DATE

APPROVED BY DATE

MATERIAL NO.  
 SEE TABLE

SIZE  
 A3

SCALE  
 5:1

DESIGN UNITS  
 METRIC

THIRD ANGLE PROJECTION

TITLE  
 INSULATION SLEEVE FOR 250 SLIP-ON RECEPTACLE

MOLEX MOLEX INCORPORATED

DOCUMENT NO.  
 SD-35025-001

SHEET NO.  
 1 OF 01

THIS DRAWING CONTAINS INFORMATION THAT IS PROPRIETARY TO MOLEX INCORPORATED AND SHOULD NOT BE USED WITHOUT WRITTEN PERMISSION