

MICRO SWITCH

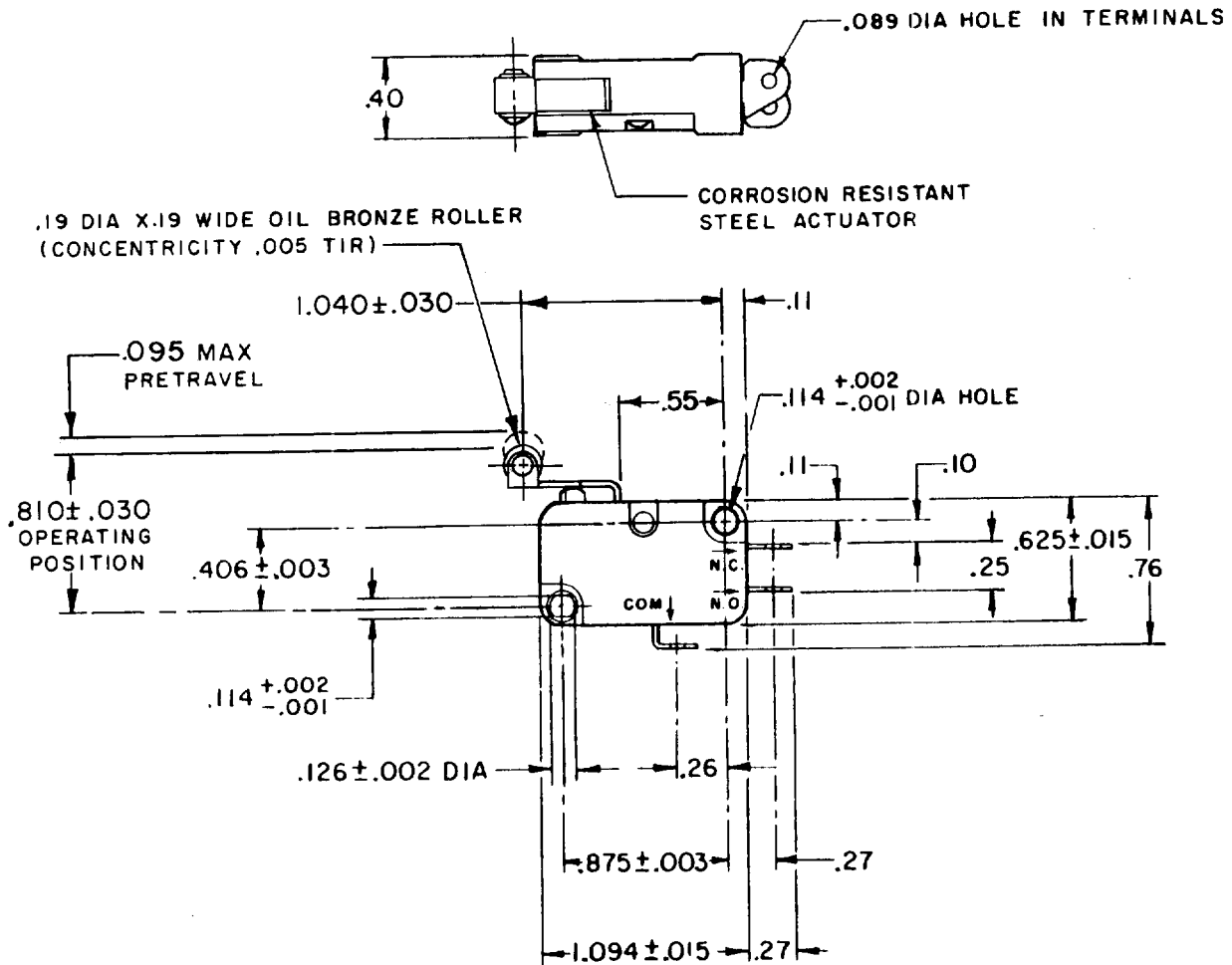
FREEPORT ILLINOIS, U.S.A
A DIVISION OF HONEYWELL
FED. MFG. CODE 91929

SWITCH - BASIC

CATALOG LISTING
V3L-2226
CQ-X1507

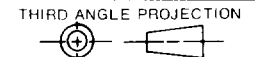
5

V3L-2226
 M
 DRAWING NUMBER
 X 2
 ISSUE
 3
 REVISIONS
 A CO 59221
 SMA 29 SEPT 86
 B CO 76417
 J A L 20 OCT 93
 RELEASE NO. PR-7488
 CHECK
 2 NOV 78
 C E B
 CHECK
 31 OCT 78
 W J M
 DRAWN
 FO-52848-A



NOTE -
1 - TERMINALS ARE PLATED FOR SOLDERING

THIS DRAWING COVERS A PROPRIETARY ITEM AND IS THE PROPERTY OF MICRO SWITCH, A DIVISION OF HONEYWELL. THIS DRAWING IS NOT TO BE COPIED OR USED WITHOUT THE APPROVAL OF MICRO SWITCH.



CHARACTERISTICS	
OPERATING FORCE-----	40 GRAM MAX
RELEASE FORCE-----	2 GRAM MIN
DIFFERENTIAL TRAVEL-----	.028 MAX
OVERTRAVEL-----	.050 MIN
RELEASE TRAVEL-----	.014 MIN

ELECTRICAL DATA	
CONTACT ARRANGEMENT S P D T	
L131 10A-1/4HP-125 OR 250 VAC 1/2A-125 VDC; 1/4A-250 VDC 3A-125 VAC "L"	

SCALE FULL			
DO NOT SCALE PRINT			
TOLERANCES APPLY TO DESIGN UNITS. CONVERSIONS ARE ONLY FOR REFERENCE. UNLESS NOTED, TOLERANCES ARE ±			
DIM. mm	TOL. mm/in	DIM. in	TOL. mm/in
NO PLACES ONE PLACE TWO PLACES THREE PLACES ANGLES	X X,X X,XX X,XXX	1/.04 0.4/.016 0.15/.006	X,X X,XX X,XXX 0.8/.03 0.38/.015 0.13/.005
DESIGN UNITS	SI METRIC <input type="checkbox"/>	US CUSTOMARY <input checked="" type="checkbox"/>	
WEIGHT			