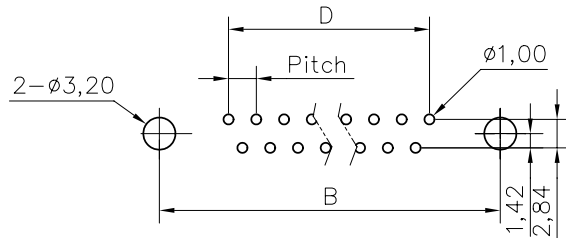
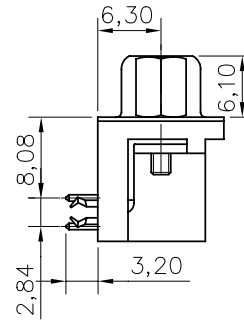
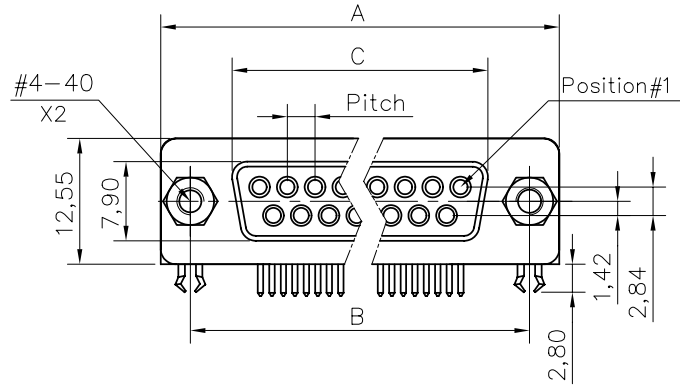


This document is the property of Amphenol Corporation and is delivered on the express condition that it is not to be disclosed, reproduced or used, in whole or in part, for manufacture or sale by anyone other than Amphenol Corporation without its prior consent. It is not to be used to disclose or to use any information in this document.



RECOMMENDED P.C.B LAYOUT  
(TOLERANCE +/-0.03)

# Customer drawing

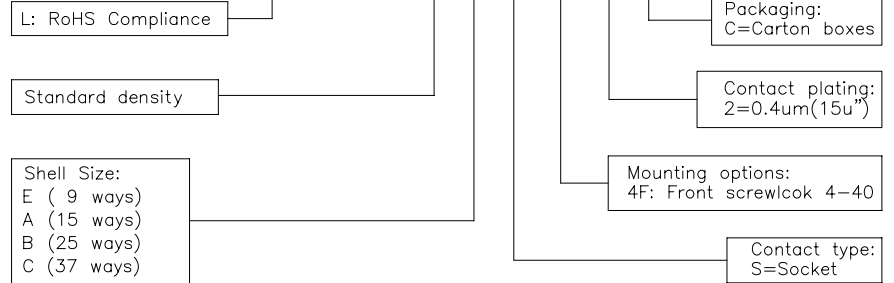
REVISIONS				
SYM	ECN	DESCRIPTION	DATE	APPROVED
1			04/18/08	

## D-SUB TECHNICAL DATA

SHELL : Steel, 100u" min tin over 50u" min nickel  
 BODY : Glass filled thermoplastic.  
 Flame retardant to UL94 V-0 Color Black  
 CONTACTS : Copper alloy  
 0.4um(15u") min gold over 1.25um (50u") min nickel on mating area.  
 100u" min tin over 50" min nickel on solder area  
 BOARDLOCK : Brass,100u" tin over 50u" min nickel  
 SCREWLOCK : Brass,100u" tin over 50u" min nickel  
 ELECTRICAL : Voltage rating 600 V Rms to 50 Hz  
 Current rating 5A  
 Withstanding Voltage >1000 V Rms to 50 Hz for one minute  
 Insulation resistance >5000 M Ohms  
 Contact resistance 20 mOhms max.  
 CLIMATIC : Temperature range -55 °C up to 150°C  
 MARKING : Amphenol...(Series NO.)  
 Commercial reference  
 Manufacturing date

## PRODUCT CODE

**L 17HT N X S 4F 2 C**



DIM.S	SHELL	A	B	C	D	Pitch
09		30.81	24.99	16.24	10.96	2.74
15		39.14	33.32	24.56	19.18	2.74
25		53.04	47.04	38.38	33.24	2.77
37		69.32	63.50	54.76	49.86	2.77

UNLESS OTHERWISE SPECIFIED TOLERANCES		APPROVAL	DATE
.X	+/-	DRAWN	Christina.cui 04/18/08
.XX	+/-	CHECKED	Lik.wang 04/18/08
.XXX	+/-	CHECKED	
FRACTIONS	+/-		
ANGLES	+/-		
		DRAWING FILE :	
FOR MATERIALS AND FINISHES SEE NOTES		ANGLE OF PROJECTION	
REMOVE SHARP EDGES		DIMENSIONS	
		U.S. INCHES	
		METRIC MM	

Amphenol®		
TITLE D-SUB connectors, HTN series		
SIZE	DRAWING NO.	REV.
A4	C L17HTNXS4F2C	1
SCALE	N/A	SHEET 1 OF 1