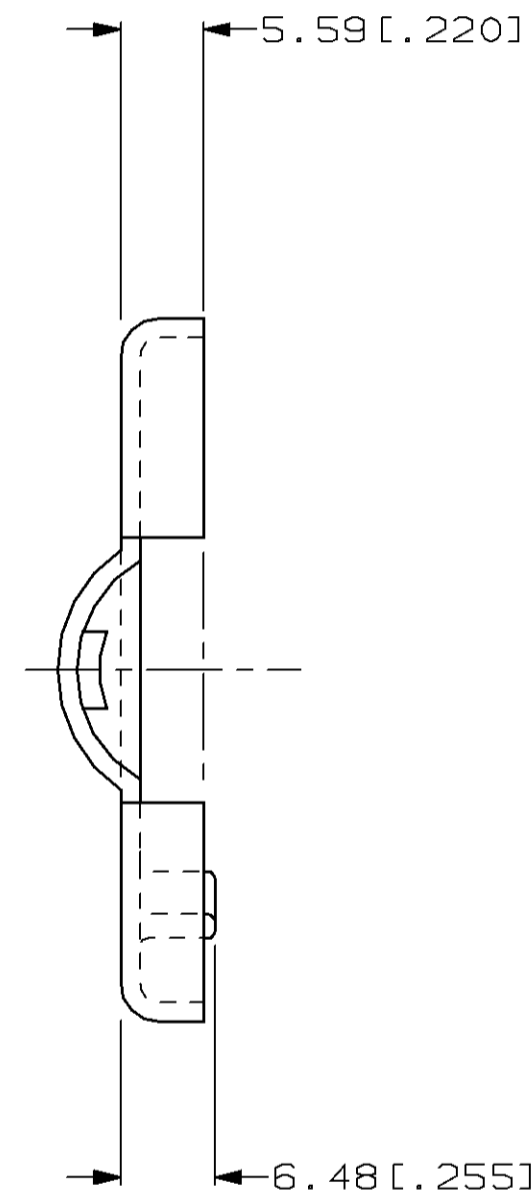
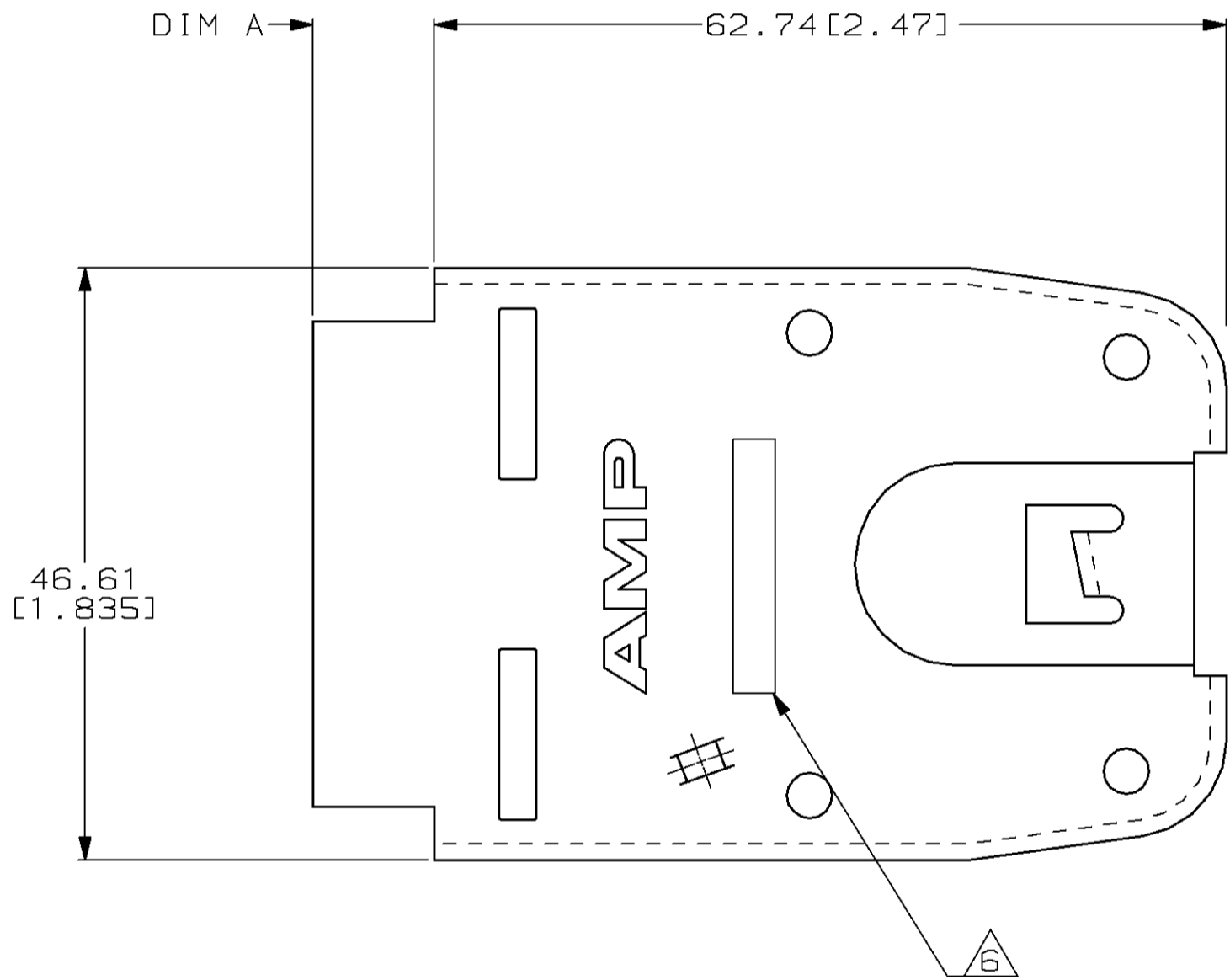


THIS DRAWING IS UNPUBLISHED. RELEASED FOR PUBLICATION
 © COPYRIGHT 19 BY AMP INCORPORATED. ALL RIGHTS RESERVED.

Loc	DIST	REVISIONS					
AA	28	P	LTR	DESCRIPTION	DATE	DWN	APVD
		E		REV; EC 0210-0020-96	09JUL96	DS	NJ

1. ALL DIMENSIONS ARE MAXIMUM.
2. STRAIN RELIEF TO BE ASSEMBLED WITH $\varnothing 3.18 [1.25]$ X 12.7 [1.500] LONG SEMI-TUBULAR STEEL RIVETS FURNISHED BY CUSTOMER.
3. ASSEMBLY REQUIRES ONE PIECE OF EITHER:
 A) 555891-1 AND 555890-1 OR 555890-3 OR
 B) 555891-2 AND 555890-2 OR 555890-4.
4. RECOMMEND ARMOUR CABLE TO ACCOMMODATE UP TO 8 INSULATED WIRES: 14.3 [9/16] OR 12.7 [1/2] INSIDE DIAMETER APPLIANCE FLEX METAL CONDUIT.
5. STRAIN RELIEF ASSEMBLY CAN BE USED WITH POWER CONNECTOR HOUSING 555930 AND POWER CONNECTOR BASE 555929 OR LINE CONNECTOR HOUSING 555892 AND LINE CONNECTOR COVER 555894.

△ STRAIN RELIEF IS MARKED AS FOLLOWS:
 555890-1 IS MARKED 90 1/2
 555890-2 IS MARKED 90 9/16
 555890-3 IS MARKED 90 1/2
 555890-4 IS MARKED 90 9/16



0.64 [.025]	14.3 [9/16] CONDUIT	555890-4
0.64 [.025]	12.7 [1/2] CONDUIT	555890-3
9.91 [.390]	14.3 [9/16] CONDUIT	555890-2
9.91 [.390]	12.7 [1/2] CONDUIT	555890-1
DIM A	DESCRIPTION	PART NO.

DIMENSIONS:		TOLERANCES UNLESS OTHERWISE SPECIFIED:		DWN		AMP		AMP Incorporated	
mm [INCHES]		0 PLC	±-	D. STRAUSSER	09JUL96	Harrisburg, PA 17105-3608			
		1 PLC	±-	CHK	09JUL96				
		2 PLC	±-	N. JONES					
		3 PLC	±-	APVD	12JUL96				
		4 PLC	±-	R. BOSSI					
		ANGLES	±-	PRODUCT SPEC					
		FINISH	-	APPLICATION SPEC					
MATERIAL	-			WEIGHT	-	SIZE	CAGE CODE	DRAWING NO	
						A2	00779	C-555890	
				CUSTOMER DRAWING		SCALE	SHEET	OF	REV
						2:1	1	1	E