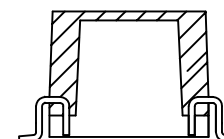
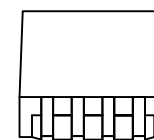


NOTES:

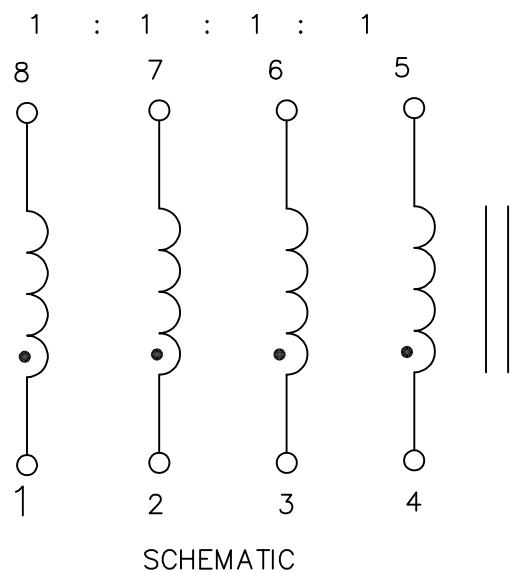
1. ROHS COMPLIANT
2. PLASTIC: THERMOSET PLASTIC MATERIAL WITH FLAMMABILITY RATING UL 94V-0 OR BETTER.
3. STORAGE TEMPERATURE: -20°C TO +125°C
4. COMPLIANCE TO J-STD:
 - A. J-STD-002: SOLDERABILITY AT 245°C REFLOW PROFILE
 - B. J-STD-020: LEVEL 1, NO MOISTURE SENSITIVE
 - C. J-STD-075: R7, 245°C MAXIMUM THROUGH REFLOW SOLDER
5. TO ORDER TAPE & REEL PACKAGING ADD A "T" SUFFIX TO THE PART NUMBER(i.e 23Z104SMNL BECOMES 23Z104SMNLT).



FINAL OUTLINE

© Copyright, 2017. Pulse Electronics Corp. All rights reserved. Pulse confidential & proprietary. (03/03/17)

| PRODUCT DESCRIPTION | TLA DRAWING | PS DRAWING | SHEET | PART NO. | DATASHEET REV. |
|-----------------------|---------------|---------------|--------|------------|----------------|
| CHK,SIN,10D,1:1,SM,TU | 23Z104SMNL-13 | PS-2420.001-A | 1 OF 3 | 23Z104SMNL | A |

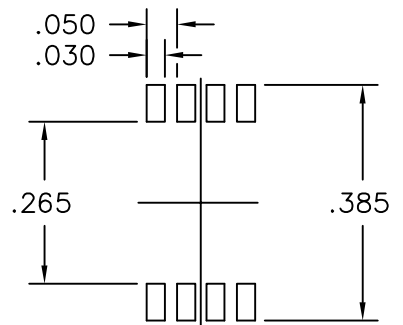
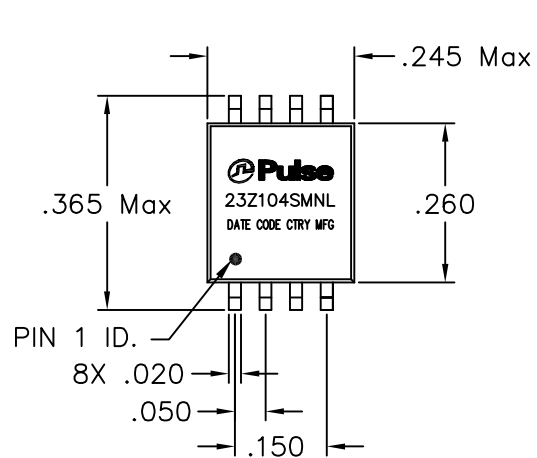


ELECTRICAL CHARACTERISTICS AT +25°C UNLESS OTHERWISE SPECIFIED
(FOR REFERENCE ONLY. USED FOR CUSTOMER INFORMATION.)

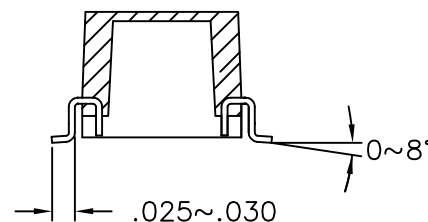
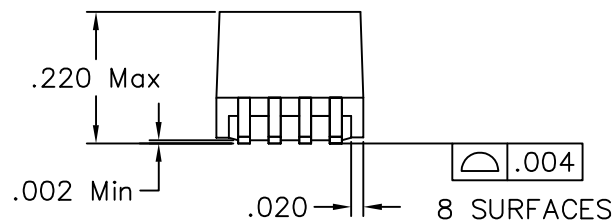
| PARAMETER | SPECIFICATIONS | | | |
|---|---|--------------|--------------|--------------|
| OPERATING TEMP | 0°C TO +70°C | | | |
| POLARITY | PER SCHEMATIC | | | |
| URNS RATIO | (1-8):(2-7):(3-6):(4-5)=1 : 1 : 1 : 1 ±5% | | | |
| ISOLATION RESISTANCE (IR AT 500 VDC) | 10G OHMS MIN. | | | |
| DC RESISTANCE | 0.2 OHMS MAX | | | |
| INDUCTANCE (OCL) | 68 uH MIN (MEASURED AT 100 KHZ, 20 mVRMS) | | | |
| BETWEEN CHANNEL ISOLATION | 500 VAC MIN @ 60 SECONDS | | | |
| IMPENDANCE | 10,20 MHZ | 30 MHZ | 70 MHZ | 100 MHZ |
| | 700 OHMS MIN | 600 OHMS MIN | 200 OHMS MIN | 200 OHMS MIN |

© Copyright, 2017. Pulse Electronics Corp. All rights reserved. Pulse confidential & proprietary. (03/03/17)

| PRODUCT DESCRIPTION | TLA DRAWING | PS DRAWING | SHEET | PART NO. | DATASHEET REV. |
|-----------------------|---------------|---------------|--------|------------|----------------|
| CHK,SIN,10D,1:1,SM,TU | 23Z104SMNL-13 | PS-2420.001-A | 2 OF 3 | 23Z104SMNL | A |



SUGGESTED LAND PATTERN



DIMENSIONS ARE IN INCHES WITH THE FOLLOWING
TOLERANCES:
.XX= ± 0.01
.XXX= ± 0.005

© Copyright, 2017. Pulse Electronics Corp. All rights reserved. Pulse confidential & proprietary. (03/03/17)

| PRODUCT DESCRIPTION | TLA DRAWING | PS DRAWING | SHEET | PART NO. | DATASHEET REV. |
|-----------------------|---------------|---------------|--------|------------|----------------|
| CHK,SIN,10D,1:1,SM,TU | 23Z104SMNL-13 | PS-2420.001-A | 3 OF 3 | 23Z104SMNL | A |