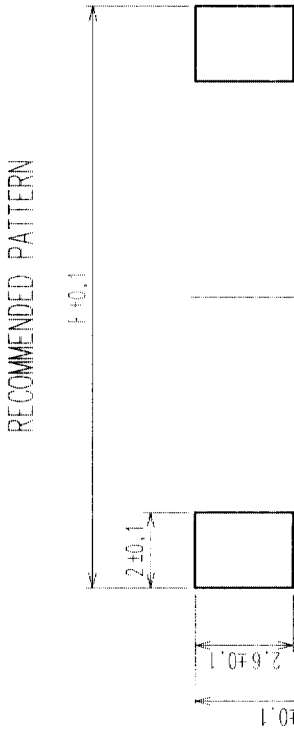
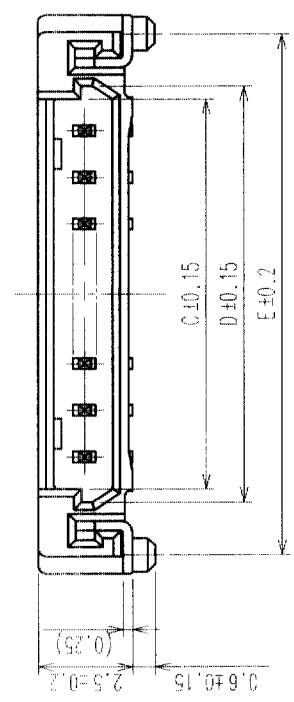
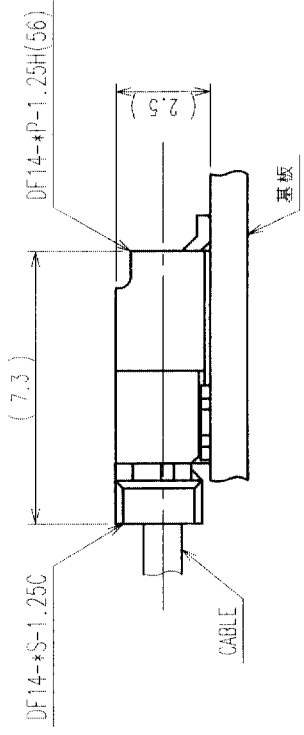


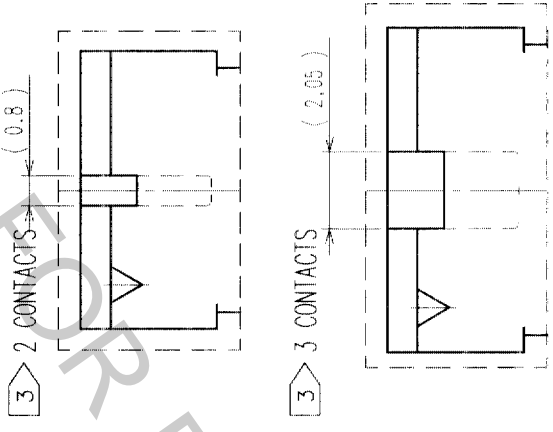
COUNT	DESCRIPTION OF REVISIONS	BY	CHKD	DATE	COUNT	DESCRIPTION OF REVISIONS	BY	CHKD	DATE
△					△				
△					△				
△					△				

PART NO.	HRS. NO.	CONTACTS	A	B	C	D	E	F
DF14-2P-1.25H(56)	CL538-0021-4-56	2	7.45	1.25	2.95	3.65	6.45	8.05
DF14-3P-1.25H(56)	CL538-0022-7-56	3	8.70	2.50	4.20	4.90	7.70	9.30
DF14-4P-1.25H(56)	CL538-0023-0-56	4	9.95	3.75	5.45	6.15	8.95	10.55
DF14-5P-1.25H(56)	CL538-0024-2-56	5	11.20	5.00	6.70	7.40	10.20	11.80
DF14-6P-1.25H(56)	CL538-0025-5-56	6	12.45	6.25	7.95	8.65	11.45	13.05
DF14-7P-1.25H(56)	CL538-0026-8-56	7	13.70	7.50	9.20	9.90	12.70	14.30
DF14-8P-1.25H(56)	CL538-0027-0-56	8	14.95	8.75	10.45	11.15	13.95	15.55
DF14-9P-1.25H(56)	CL538-0028-3-56	9	16.20	10.00	11.70	12.40	15.20	16.80
DF14-10P-1.25H(56)	CL538-0029-6-56	10	17.45	11.25	12.95	13.65	16.45	18.05
DF14-15P-1.25H(56)	CL538-0084-4-56	15	23.70	17.50	19.20	19.90	22.70	24.30
DF14-20P-1.25H(56)	CL538-0089-8-56	20	29.95	23.75	25.45	26.15	28.95	30.55
DF14-25P-1.25H(56)	CL538-0094-8-56	25	36.20	30.00	31.70	32.40	35.20	36.80
DF14-30P-1.25H(56)	CL538-0020-1-56	30	42.45	36.25	37.95	38.65	41.45	43.05

2 APPLICATION PATTERN

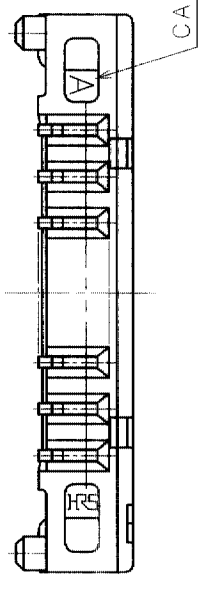
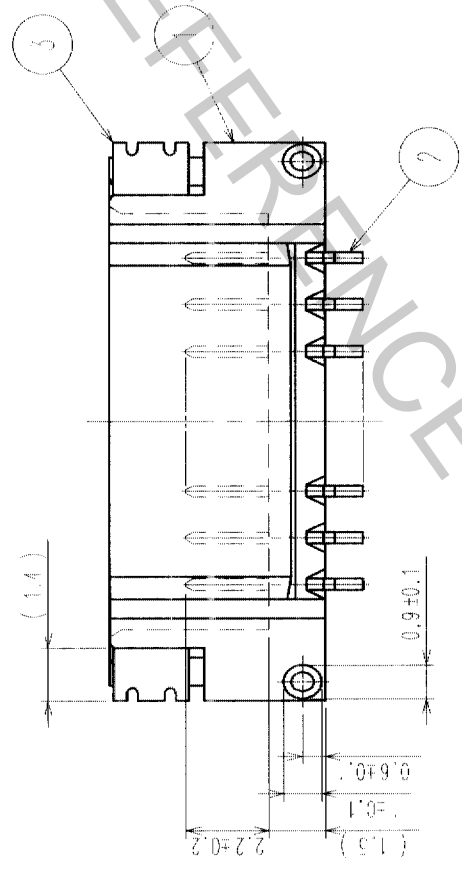


RECOMMENDED PATTERN



3 2 CONTACTS (0.8)

3 3 CONTACTS (2.05)



NOTE 1. LEAD CO-PLANALITY INCLUDE REINFORCED METAL FITTING SHALL BE 0.1 MAX.
 2. WHEN THIS CONNECTOR MATES WITH DF14-S-1.25C, THE MATING LENGTH IS 7.3mm.
 3. FOR CONNECTORS, 2 OR 3 CONTACTS, SIMPLIFIED LOCK HOLE SHALL BE SET AT THE CENTER OF HOUSING.

NO.	MATERIAL	FINISH, REMARKS	NO.	MATERIAL	FINISH, REMARKS
2	BRASS	CONTACT AREA: GOLD PLATED 0.1μm min LEAD AREA: TIN-COPPER PLATED 1μm min	5	POLYESTER	CLEAR(COVER TAPE)
1	POLYAMIDE	UNDER PLATING: NICKEL PLATED 1μm min BEIGE, UL94V-0	4	A-PET	CLEAR (EMBOSSED CARRIER TAPE)
NO.	MATERIAL	FINISH, REMARKS	3	PHOSPHOR BRONZE	TIN-COPPER PLATED 1μm min UNDER PLATING: NICKEL PLATED 0.5μm min

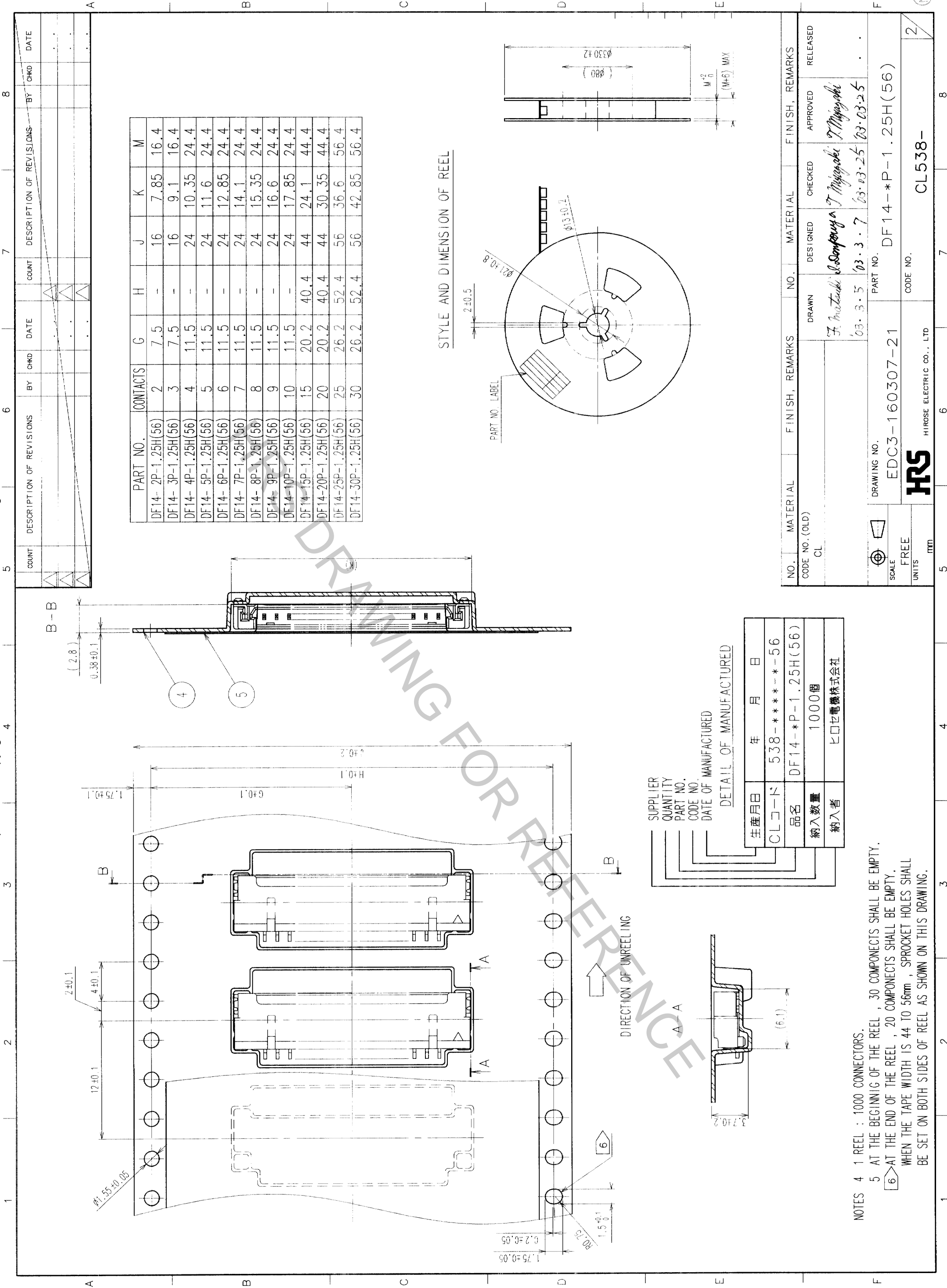
CODE NO. (OLD)	CL	DRAWING NO.	EDC3-160307-21	PART NO.	DF14-*P-1.25H(56)
SCALE	5 : 1	DRAWN	F. Matsuki	DESIGNED	I. Sanyouya
UNITS	mm		03.3.5	CHECKED	T. Miyajima
			03.3.7	APPROVED	T. Miyajima
			03.03.25	RELEASED	
			03.03.25		

TO					
----	--	--	--	--	--

CL538-

1/2

NO



STYLE AND DIMENSION OF REEL

PART NO.	CONTACTS	G	H	J	K	M
DF14-2P-1.25H(56)	2	7.5	-	16	7.85	16.4
DF14-3P-1.25H(56)	3	7.5	-	16	9.1	16.4
DF14-4P-1.25H(56)	4	11.5	-	24	10.35	24.4
DF14-5P-1.25H(56)	5	11.5	-	24	11.6	24.4
DF14-6P-1.25H(56)	6	11.5	-	24	12.85	24.4
DF14-7P-1.25H(56)	7	11.5	-	24	14.1	24.4
DF14-8P-1.25H(56)	8	11.5	-	24	15.35	24.4
DF14-9P-1.25H(56)	9	11.5	-	24	16.6	24.4
DF14-10P-1.25H(56)	10	11.5	-	24	17.85	24.4
DF14-15P-1.25H(56)	15	20.2	40.4	44	24.1	44.4
DF14-20P-1.25H(56)	20	20.2	40.4	44	30.35	44.4
DF14-25P-1.25H(56)	25	26.2	52.4	56	36.6	56.4
DF14-30P-1.25H(56)	30	26.2	52.4	56	42.85	56.4

COUNT	DESCRIPTION OF REVISIONS	BY	CHKD	DATE	COUNT	DESCRIPTION OF REVISIONS	BY	CHKD	DATE

SUPPLIER		DETAIL OF MANUFACTURED	
QUANTITY	年 月 日	生産月日	年 月 日
PART NO.	538-****-56	CLコード	538-****-56
DATE OF MANUFACTURED	DF14-P-1.25H(56)	品名	DF14-P-1.25H(56)
	1000個	納入数量	1000個
	ヒロセ電機株式会社	納入者	ヒロセ電機株式会社

NOTES 4 1 REEL : 1000 CONNECTORS.
 5 AT THE BEGINNING OF THE REEL , 30 COMPONENTS SHALL BE EMPTY.
 6 AT THE END OF THE REEL , 20 COMPONENTS SHALL BE EMPTY.
 WHEN THE TAPE WIDTH IS 44 TO 56mm , SPROCKET HOLES SHALL BE SET ON BOTH SIDES OF REEL AS SHOWN ON THIS DRAWING.

NO.	MATERIAL	FINISH, REMARKS	NO.	MATERIAL	FINISH, REMARKS
CL					

NO.	MATERIAL	FINISH, REMARKS	NO.	MATERIAL	FINISH, REMARKS
CL					

CODE NO. (OLD)	DRAWN	DESIGNED	CHECKED	APPROVED	RELEASED
	F. Matsuda	R. Sato	T. Miyaguchi	T. Miyaguchi	
	03.3.5	03.3.7	03.03.25	03.03.25	

DRAWING NO.	PART NO.
EDC3-160307-21	DF14-P-1.25H(56)

SCALE	UNITS	ITEM
FREE	mm	

CODE NO.	CODE NO.
	CL538-

NO.	DESCRIPTION OF REVISIONS	BY	CHKD	DATE

TO