

ATLANTIC VERSION TERMINATOR INTERFACE ADAPTER	PART NUMBER	REVISION	DESCRIPTION	FEED TYPE	APPLICATOR STYLE CONVERSION CHART						
					CONVERT TO	PART NUMBERS REQUIRED					
	2266060-1	A	FINE CRIMP HEIGHT ADJUST	MECHANICAL	PNEUMATIC FEED	2119950-1	1338685-1	5-18022-5	2119641-1	2119799-1	2063440-1
	2266060-2	A	FINE CRIMP HEIGHT ADJUST	PNEUMATIC	SERVO LATCH PLATE	2119951-1	-	8-2266060-5	1901094-3	2-1752354-0	2168400-6 (QUANTITY 2)
					SMART APPLICATOR	2161326-1	-	8-2266060-4	-	-	
					MECHANICAL FEED	2119949-1	1338685-1	5-18022-5	2119653-1	-	-
	2266060-5	A	FINE CRIMP HEIGHT ADJUST	SERVO LATCH PLATE <sup>4</sup>	SERVO LATCH PLATE	2119951-1	-	8-2266060-5	1901094-3	2-1752354-0	2168400-6 (QUANTITY 2)
					SMART APPLICATOR	2161326-1	-	8-2266060-4	-	-	
	2266060-6	A	NON-CRIMP HEIGHT ADJUST	SERVO LATCH PLATE <sup>4</sup>	SERVO LATCH PLATE <sup>12</sup>	-	-	-	-	-	-
2266060-7	A	FINE CRIMP HEIGHT ADJUST	NONE	-	-	-	-	-	-	-	-
7-2266060-7	A	CRIMP TOOLING KIT	-	-	-	-	-	-	-	-	-

APPLICATOR DATA		
CRIMP	SIZE	TYPE
WIRE	2.29 mm [.090]	F
INSUL	3.68 mm [.145]	O

APPLICATOR INSTRUCTIONS 114-5082

TERMINAL DATA: TE TERMINAL	TE CRIMP SPECIFICATION
TERMINAL NAME: ECONOSEAL RECEPTACLE CONTACT .070 TYPE	
WIRE STRIP LENGTH 4.00-4.50 mm [.157-.177 IN]	INSULATION DIAMETER RANGE Ø2.00-2.60 mm [.079-.102 IN]
TERMINAL APPLICATION SPECIFICATION 114-5082	

TERMINALS APPLIED			
TE TERMINAL	TE SEAL	TE SEAL	TE SEAL
171662-1	175104-2	172888-1	172888-2
171662-4		172888-3	1-172888-3
171662-5		9-172888-2	176886-2
		176886-4	176886-5
		347874-1	1-900325-9

WIRE SIZE	CRIMP HEIGHT mm [INCH]	CRIMP HEIGHT REFERENCE SETTING
1.25mm <sup>2</sup>	1.52+/-0.05 [.060+/-0.002]	6.3
0.85mm <sup>2</sup>	1.37+/-0.05 [.054+/-0.002]	7.9
0.50mm <sup>2</sup>	1.24+/-0.05 [.049+/-0.002]	9.2

- <sup>1</sup> RECOMMENDED SPARE PARTS
- <sup>2</sup> GREASE BEARING SURFACES LIGHTLY
- 3. LUBRICATE DAILY PER THE APPLICATOR INSTRUCTION SHEET SUPPLIED WITH THE APPLICATOR.
- <sup>4</sup> APPLICATOR SPECIFIC DATA TO BE ENTERED INTO BLANK MEMORY CHIP AT ASSEMBLY. SEE BELOW FOR PART NUMBER:  
 MECHANICAL FEED WITH "SMART APPLICATOR" CONVERSION: 8-2266060-4  
 PNEUMATIC FEED WITH "SMART APPLICATOR" CONVERSION: 8-2266060-4  
 SERVO FEED WITH "FINE CRIMP HEIGHT ADJUST": 8-2266060-5  
 SERVO FEED WITH "NON-CRIMP HEIGHT ADJUST": 8-2266060-6
- 5. ADJUSTMENT OF THE STRIPPER MAY BE REQUIRED WHEN MOVING THE APPLICATOR BETWEEN BENCH AND LEADMAKER APPLICATIONS.
- <sup>6</sup> APPLY PART NUMBER 1-23419-5 LOCTITE TO THREADS OF ITEMS 62, 180 & 242. FOR -6 ONLY APPLY PART NUMBER 1-23419-5 LOCTITE TO THREADS OF ITEMS 37, 180 & 242.
- <sup>7</sup> GREASE THREADS, GROOVE AND O-RING ON ITEMS 35 & 252.
- <sup>8</sup> MAGNET, ITEM 166 MUST BE ORIENTED CORRECTLY IN ORDER TO PROPERLY ACTUATE THE COUNTER.
- <sup>9</sup> CRIMP HEIGHT REFERENCE SETTING WAS THE SETTING USED WHEN THE APPLICATOR WAS QUALIFIED AT THE FACTORY. ADJUSTMENT MAY BE NECESSARY WHEN RUNNING APPLICATOR IN THE FIELD.
- <sup>10</sup> SPARE FEED CAM STORAGE LOCATION REFER TO INSTRUCTION SHEET FOR ADDITIONAL INFORMATION.
- <sup>11</sup> TO CONVERT THE APPLICATOR TO A NON-CARRIER CUTTING STYLE, REMOVE ITEM 13 AND ATTACH TO THE LOCATION ON THE BACK SIDE OF THE HOUSING. REFER TO INSTRUCTION SHEET FOR ADDITIONAL INFORMATION.
- <sup>12</sup> WHEN ASSEMBLING -6 NON-CRIMP HEIGHT ADJUST APPLICATOR USE SHIM PACK 2119957-2 TO ALIGN APPLICATOR'S MAXIMUM WIRE CRIMP HEIGHT AT NORMAL TERMINATOR SHUT HEIGHT

- <sup>13</sup> THIS APPLICATOR APPLIES TERMINAL WITH A SEAL. INSULATION RANGLE QUOTED IS THAT OF THE TERMINAL. THE SEAL PN IS 172888. INSULATION DIA RANGE IS Ø2.0-2.6 mm. THE SEAL PN IS 176886. INSULATION DIA RANGE IS Ø1.8-2.6 mm. THE SEAL PN IS 900325. INSULATION DIA RANGE IS Ø2.0-2.3 mm.
- <sup>14</sup> APPLY TORO-SEAL IN ALLEN SOCKET TO FILL HOLE AFTER FLAT HD HAS BEEN ADJUSTED TO CORRECT HEIGHT AT QUALIFICATION. APPLY #1-23419-5 LOC-TITE TO THREADS.

15. THIS APPLICATOR IS SPECIFIC FOR USE IN A STRIPPER SEAL TERMINATING UNIT.

-77	-7	-6	-5	-2	-1	PART NO	DESCRIPTION	ITEM NO
-	-	1	-	-	-	2119957-2	APPLICATOR SHIM PACK	260
-	1	-	1	1	1	8-21084-0	O-RING, .676 ID, .070 DIA. MAT.	252
-	-	-	-	1	-	2119640-1	PUSH ROD, AIR FEED	250
-	-	-	-	1	-	2079988-1	BUSHING, LCH5-12, MISUMI	249

**ATLANTIC VERSION**  
 Shown on sheets 1 of 4 & 2 of 4  
 (Pacific version shown on sheets 3 of 4 & 4 of 4)

SET UP GAUGE	LOC	DIST	REVISIONS			
2119599-1	A	66	REV	DATE	BY	APPV
			1	DEVELOPMENT	27SEP2013	KH UG
			A	RELEASED	05NOV2013	BH GB

-	-	-	-	1	-	2119641-1	FEED CAM, AIR FEED	248
-	1	-	1	1	1	2119798-1	DETENT PIN	247
-	1	-	1	1	1	1-22279-3	SPRING, COMPRESSION	246
-	-	1	-	-	-	2119758-1	RAM, AMP STYLE, SIDE FEED, NON-ADJ.	245
-	1	1	1	1	1	2119082-7	CAM, SNAIL, INSULATION ADJUSTMENT	244
-	1	1	1	1	1	2079764-1	WASHER, WAVE SPRING, CREST-TO-CREST	243
-	1	1	1	1	1	2119083-1	RETAINER, INSULATION DIAL	242
-	1	1	1	1	1	7-18023-7	SCR, SKT HD CAP M3 X 4.0	241
-	-	2	2	-	-	2168400-6	SHCS, LOW HEAD, RoHS, M5 X 16	240
-	-	-	-	-	1	2119580-1	MECHANICAL FEED ASSEMBLY	239
-	-	-	-	-	1	2063440-1	AIR FEED MODULE	238
-	-	1	1	-	-	2119740-2	TAG, IDENTIFICATION	213
-	-	1	1	-	-	1901094-3	SPACER, FEEDER	198
-	1	1	1	1	1	2-1752354-0	STANDOFF, HOLD-DOWN	180
-	1	1	1	1	1	993111-1	PIN, SLOTTED SPRING 3.0 X 20.0	177
-	1	1	1	1	1	8-22280-7	SPRING, COMPRESSION	176
-	1	1	1	1	1	1752353-2	GUIDE PIN, HOLDDOWN	175
-	1	1	1	1	1	1901680-2	GUIDE PIN, HOLDDOWN	174
-	-	-	-	2	-	21045-3	RING, RETAIN, EXTERN, 3/16 CRESCENT	172
-	1	1	1	1	1	994969-1	MAGNET, RARE EARTH HIGH ENERGY	166
-	REF	REF	REF	REF	REF	994970-2	COUNTER, MAGNETIC	164
-	-	-	-	1	-	240638-1	SPRING, FEED FINGER	163
-	-	-	-	1	-	3-23627-7	PIN, RETAIN, GRVD, 3/16 X .854	137
-	-	-	-	1	-	2119799-1	HOLDER, FEED FINGER, AF	136
-	-	REF	REF	-	-	SEE NOTE 4	MEMORY CHIP, PROGRAMMED	135
-	-	1	1	-	-	1633743-1	SERVO FEED LATCH ASM	133
-	1	1	1	1	1	1-18028-2	WASHER, FLAT, REG M4	119
-	-	REF	REF	-	-	2119944-1	FEED FINGER ASSEMBLY, SF	117
-	1	1	1	1	1	455888-5	SPACER, CRIMPER	82
-	1	1	1	1	1	2119956-1	DOCUMENTATION PACKAGE	71
-	1	-	-	1	1	2119740-1	TAG, IDENTIFICATION	67
-	2	2	2	2	2	2168078-1	SCREW, DRIVE, RH, RoHS, 2 x .188	66
-	1	-	1	1	1	2119793-1	LIMITER, ADJUSTMENT BOLT	63
-	3	-	3	3	3	992763-5	SCR, SET, SOC, CONE POINT, M3 x 4.0	62
-	1	1	1	1	1	2079383-4	SCR, BHSC, RoHS (M4 X 8)	60
-	-	-	-	1	1	5-18022-5	SCR, HEX HD CAP, M4 X 6.0	59
-	1	1	1	1	1	985575-3	SCR, FLT SKT HD CAP M3 X 10.0	57
-	-	-	-	1	1	1338685-1	PAWL, FEED	56
-	4	4	4	4	4	2168400-1	SHCS, LOW HEAD, RoHS, M4 X 12	54
-	1	1	1	1	1	1-5018030-0	NUT, HEX, REG, RoHS, M3.5	52
-	1	1	1	1	1	1901681-1	HOLDDOWN, TERMINAL	51
-	-	-	-	1	2	18023-9	SCR, SKT HD CAP M4 X 6.0	49
-	-	-	-	-	1	2119652-1	FEED CAM, PRE FEED	48
-	-	-	-	-	1	2119653-1	FEED CAM, POST FEED	47
-	1	1	1	1	1	2-2119656-1	APPLICATOR BASIC ASSEMBLY, SF	46
-	1	-	1	1	1	2119370-1	RAM, AMP STYLE, SIDE FEED	44
-	1	1	1	1	1	2079383-7	SCR, BHSC, RoHS (M8 X 25)	41
-	1	-	1	1	1	2119645-1	DISC, NUMBERED FA WIRE ADJUSTMENT	40
-	1	-	1	1	1	2119957-1	APPLICATOR SHIM PACK	39
-	1	1	1	1	1	1-2119644-2	RAM WASHER, PRECISION	38
-	1	1	1	1	1	2119085-1	FA HEAD, ATLANTIC STYLE	37
-	1	-	1	1	1	2119092-1	BOLT, ADJUSTMENT	35
-	1	1	1	1	1	1752356-3	SUPPORT, TERMINAL	34
-	2	2	2	2	2	2079383-5	SCR, BHSC, RoHS (M4 X 20)	33
-	1	1	1	1	1	2161328-1	HEX HEAD, FLANGED, M5 X 8mm LONG	32
-	1	1	1	1	1	1-1320908-0	SPACER, STRIP GUIDE	30
-	1	1	1	1	1	2119959-1	ASSEMBLY, STRIP GUIDE	29
-	1	1	1	1	1	455888-3	SPACER, CRIMPER	28
-	1	1	1	1	1	1320928-2	STRIP GUIDE	24
-	1	1	1	1	1	2168083-2	SCR, SKT HD CAP, RoHS, M4 X 8.0	21
-	1	1	1	1	1	1-18028-2	WASHER, FLAT, REG M4	20
-	1	1	1	1	1	2119533-1	STRIPPER, SIDE FEED	19
-	1	1	1	1	1	2119806-1	INSERT, SHEAR	13
-	1	1	1	1	1	3-22280-3	SPRING, COMPRESSION	12
-	1	1	1	1	1	1-356885-4	STOP, SHEAR	11
-	1	1	1	1	1	2119805-1	SHEAR HOLDER, FRONT	10
-	1	1	1	1	1	318707-1	FLOATING SHEAR, FRONT	9
-	1	1	1	1	1	1333205-5	ANVIL, COMBINATION	8
-	1	1	1	1	1	2-2119781-4	DEPRESSOR, SHEAR	5
-	1	1	1	1	1	2-238011-2	BLOCK, CRIMPER SPACER	4
-	1	1	1	1	1	3-2119784-8	CRIMPER, INSULATION O PREMIUM	3
-	1	1	1	1	1	1-455888-4	SPACER, CRIMPER	2
-	1	1	1	1	1	4-456406-1	CRIMPER, WIRE PREMIUM	1

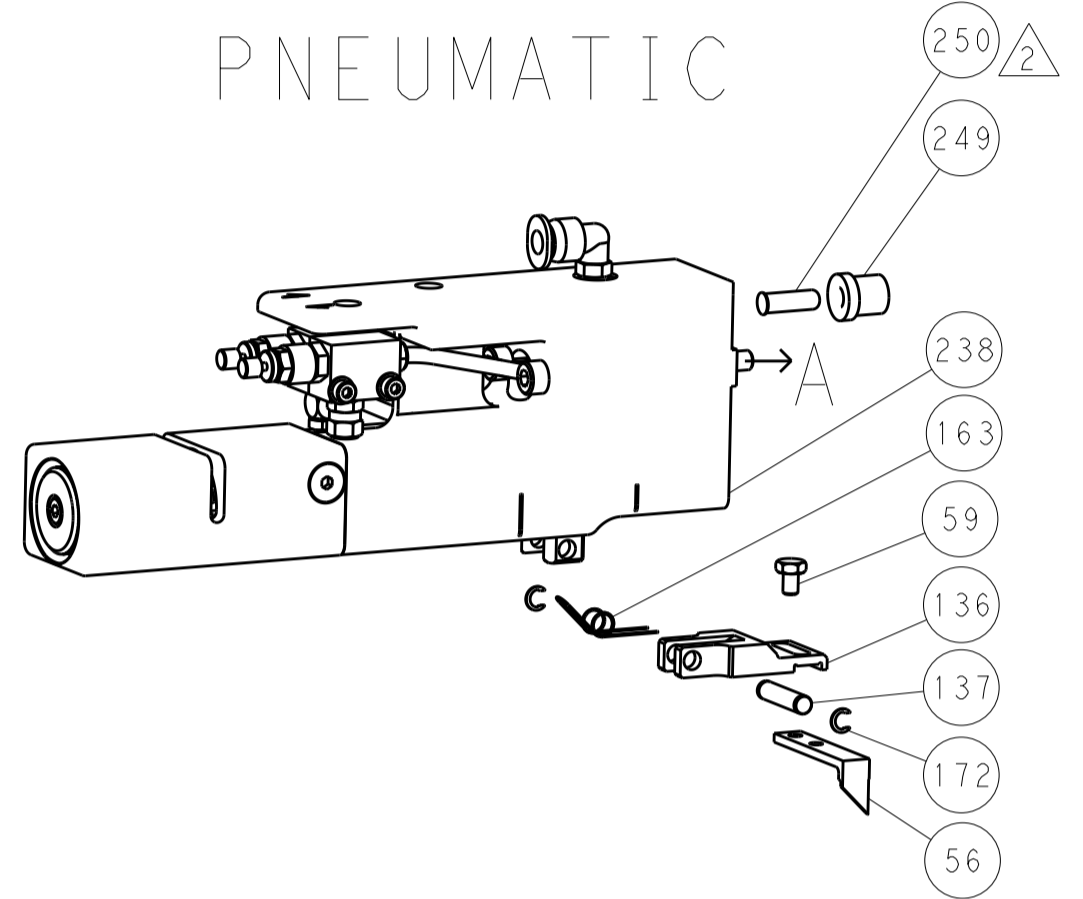
DIMENSIONS:	TOLERANCES UNLESS OTHERWISE SPECIFIED:	CHK	DATE	NAME
mm	0 PLC ±.5 1 PLC ±0.5 2 PLC ±0.13 3 PLC ±0.013 4 PLC ±0.001 ANGLES ±.1	CH	27SEP2013	CH
		CHK	27SEP2013	CH
MATERIAL:		CHK	27SEP2013	CH
FINISH:		CHK	27SEP2013	CH
WEIGHT:		CHK	27SEP2013	CH
Customer Accessible Production Drawing		SCALE	1:2	SHEET 1 of 4

LOC	DIST	REV	DATE	BY	APPV
A	66				
REVISIONS					

### FEED TYPE MECHANICAL



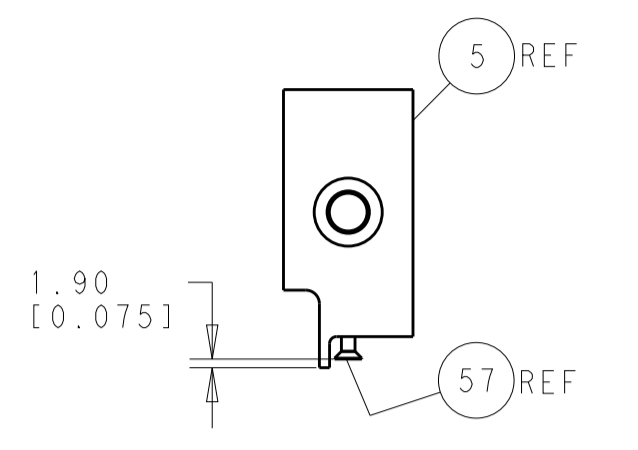
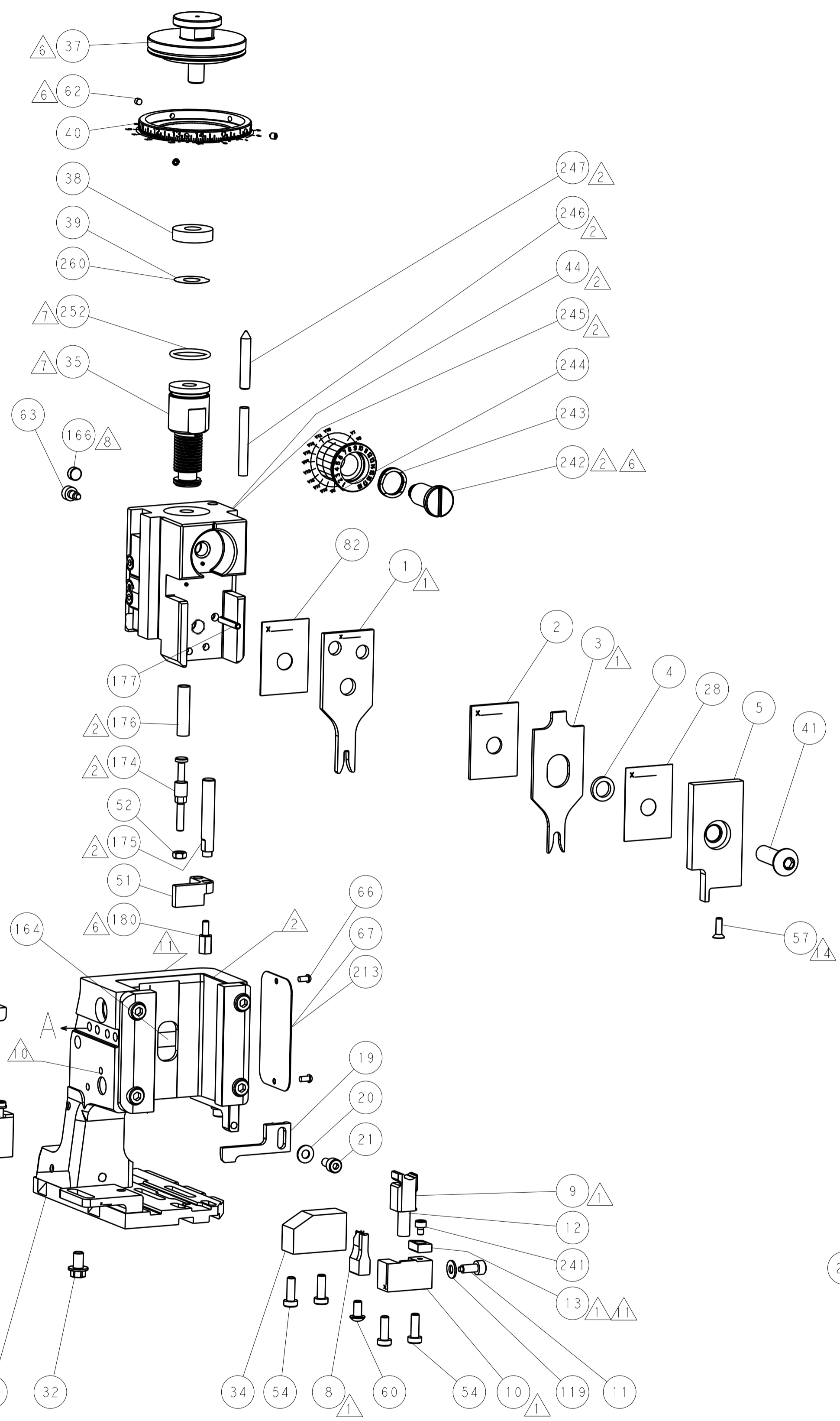
### PNEUMATIC



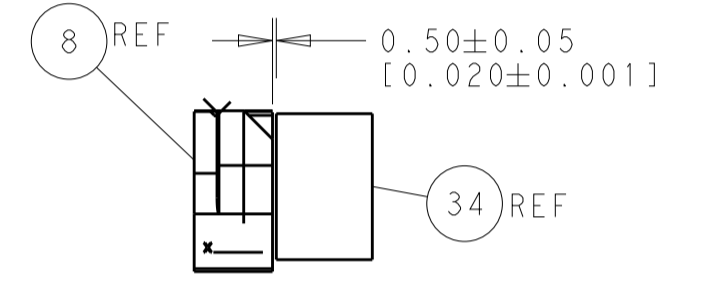
### SERVO LATCH PLATE



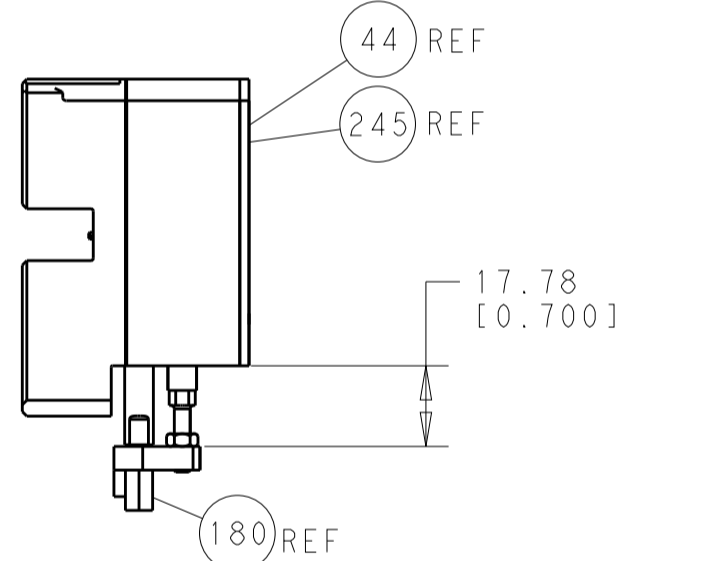
### CAM POSITIONS



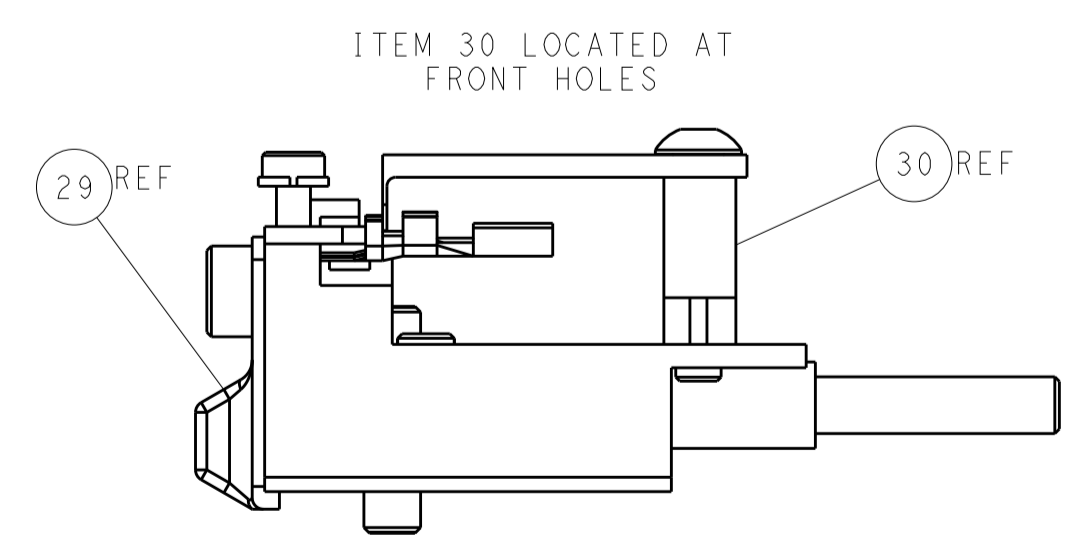
SHEAR DEPRESSOR DETAIL



TERMINAL SUPPORT LOCATION



HOLDDOWN SET-UP



FEED TRACK POSITION GUIDE BY INSULATION BARREL

**ATLANTIC VERSION**  
 Shown on sheets 1 of 4 & 2 of 4  
 (Pacific version shown on sheets 3 of 4 & 4 of 4)

DIMENSIONS:		TOLERANCES UNLESS OTHERWISE SPECIFIED:		DWG: H. HUANG 27SEP2013		TE Connectivity	
mm	0 PLC ±0.5	1 PLC ±0.5	2 PLC ±0.13	3 PLC ±0.013	4 PLC ±0.001	APVD: L. ZHANG 27SEP2013	Harrisburg, PA 17105-3608
MATERIAL:		FINISH:		NAME: Ocean Side Feed Applicator		RESTRICTED TO:	
				SIZE: A1		CAGE CODE: 00779	
				DRAWING NO: 2266060		SCALE: 1:2	
				SHEET: 2 of 4		REV: A	

PACIFIC VERSION TERMINATOR INTERFACE ADAPTER	PART NUMBER	REVISION	DESCRIPTION	FEED TYPE	APPLICATOR STYLE CONVERSION CHART						
					CONVERT TO	PART NUMBERS REQUIRED					
	2-2266060-1	A	FINE CRIMP HEIGHT ADJUST	MECHANICAL	PNEUMATIC FEED	2119950-1	1338685-1	5-18022-5	2119641-2	2119799-1	2063440-1
					SERVO LATCH PLATE	2119951-1	-	8-2266060-5	1901094-3	2-1752354-0	2168400-6 (QUANTITY 2)
					SMART APPLICATOR	2161326-1	-	8-2266060-4	-	-	-
	2-2266060-2	A	FINE CRIMP HEIGHT ADJUST	PNEUMATIC	MECHANICAL FEED	2119949-1	1338685-1	5-18022-5	2119653-2	-	-
					SERVO LATCH PLATE	2119951-1	-	8-2266060-5	1901094-3	2-1752354-0	2168400-6 (QUANTITY 2)
					SMART APPLICATOR	2161326-1	-	8-2266060-4	-	-	-
	2-2266060-5	A	FINE CRIMP HEIGHT ADJUST	SERVO LATCH PLATE	MECHANICAL FEED	2119949-1	1338685-1	5-18022-5	2119653-2	-	-
					PNEUMATIC FEED	2119950-1	1338685-1	5-18022-5	2119641-2	2119799-1	2063440-1
	2-2266060-7	A	FINE CRIMP HEIGHT ADJUST	NONE	-	-	-	-	-	-	-
	7-2266060-7	A	CRIMP TOOLING KIT	-	-	-	-	-	-	-	-

APPLICATOR DATA		
CRIMP	SIZE	TYPE
WIRE	2.29 mm [.090]	F
INSUL	3.68 mm [1.45]	Ø
APPLICATOR INSTRUCTIONS 114-5082		

TERMINAL DATA: TE TERMINAL		TE CRIMP SPECIFICATION	
TERMINAL NAME: ECONOSEAL RECEPTACLE CONTACT .070 TYPE			
WIRE STRIP LENGTH		INSULATION DIAMETER RANGE	
4.00-4.50 mm [1.57-.177 IN]		Ø2.00-2.60 mm [0.079-.102 IN]	
TERMINAL APPLICATION SPECIFICATION	114-5082	-	-
TERMINALS APPLIED			
TE TERMINAL	TE TERMINAL	TE SEAL	TE SEAL
171662-1	175104-2	172888-1	172888-2
171662-4		172888-3	1-172888-3
171662-5		9-172888-2	176886-2
		176886-4	176886-5
		347874-1	1-900325-9

WIRE SIZE	CRIMP HEIGHT mm [INCH]	CRIMP HEIGHT REFERENCE SETTING
1.25mm2	1.52+/-0.05 [1.060+/-0.002]	6.3
0.85mm2	1.37+/-0.05 [1.054+/-0.002]	7.9
0.50mm2	1.24+/-0.05 [1.049+/-0.002]	9.2

- RECOMMENDED SPARE PARTS
- GREASE BEARING SURFACES LIGHTLY
- LUBRICATE DAILY PER THE APPLICATOR INSTRUCTION SHEET SUPPLIED WITH THE APPLICATOR.
- APPLICATOR SPECIFIC DATA TO BE ENTERED INTO BLANK MEMORY CHIP AT ASSEMBLY. SEE BELOW FOR PART NUMBER:  
 MECHANICAL FEED WITH "SMART APPLICATOR" CONVERSION: 8-2266060-4  
 PNEUMATIC FEED WITH "SMART APPLICATOR" CONVERSION: 8-2266060-4  
 SERVO FEED WITH "FINE CRIMP HEIGHT ADJUST": 8-2266060-5
- ADJUSTMENT OF THE STRIPPER MAY BE REQUIRED WHEN MOVING THE APPLICATOR BETWEEN BENCH AND LEADMAKER APPLICATIONS.
- APPLY PART NUMBER 1-23419-5 LOCTITE TO THREADS OF ITEMS 62, 180 & 242.
- GREASE THREADS, GROOVE AND O-RING ON ITEMS 139 & 152.
- MAGNET MUST BE ORIENTED CORRECTLY IN ORDER TO PROPERLY ACTUATE THE COUNTER.
- CRIMP HEIGHT REFERENCE SETTING WAS THE SETTING USED WHEN THE APPLICATOR WAS QUALIFIED AT THE FACTORY. ADJUSTMENT MAY BE NECESSARY WHEN RUNNING APPLICATOR IN THE FIELD.
- SPARE FEED CAM STORAGE LOCATION REFER TO INSTRUCTION SHEET FOR ADDITIONAL INFORMATION.
- TO CONVERT THE APPLICATOR TO A NON-CARRIER CUTTING STYLE, REMOVE ITEM 13 AND ATTACH TO THE LOCATION ON BACK SIDE OF THE HOUSING. REFER TO INSTRUCTION SHEET FOR ADDITIONAL INFORMATION.
- THIS APPLICATOR APPLIES TERMINAL WITH A SEAL. INSULATION RANGE QUOTED IS THAT OF THE TERMINAL. THE SEAL PN IS 172888, INSULATION DIA RANGE IS Ø2.0-2.6 mm. THE SEAL PN IS 176886, INSULATION DIA RANGE IS Ø1.8-2.6 mm. THE SEAL PN IS 900325, INSULATION DIA RANGE IS Ø2.0-2.3 mm.
- APPLY TORQ-SEAL IN ALLEN SOCKET TO FILL HOLE AFTER FLAT HD HAS BEEN ADJUSTED TO CORRECT HEIGHT AT QUALIFICATION. APPLY #1-23419-5 LOC-TITE TO THREADS.
- THIS APPLICATOR IS SPECIFIC FOR USE IN A STRIPPER SEAL TERMINATING UNIT.

**\*WARNING**  
 ON INSTALLATION, SET WIRE DISC, ITEM 40 TO LARGEST WIRE SIZE SETTING. USE OF SETTINGS BELOW MINIMUM REQUIRED CRIMP HEIGHT SETTING WILL CAUSE DAMAGE TO CRIMP TOOLING.

-	1	1	1	1	2119782-1	FINE ADJUST HEAD ASM, PACIFIC STYLE	251				
-	-	-	1	-	2119640-1	PUSH ROD, AIR FEED	250				
-77	-27	-25	-22	-21	PART NO	DESCRIPTION	ITEM NO				

**PACIFIC VERSION**  
 Shown on sheets 3 of 4 & 4 of 4  
 (Atlantic version shown on sheets 1 of 4 & 2 of 4)

SET UP GAUGE	LOC	DIST	REVISIONS					
2119599-1	A	66	P	LTM	DESCRIPTION	DATE	OWN	APVD
			-	-	SEE SHEET 1	-	-	-

-	-	-	1	-	2079988-1	BUSHING, LCH5-12, MISUMI	249			
-	1	1	1	1	1-22279-3	SPRING, COMPRESSION	246			
-	1	1	1	1	2119082-7	CAM, SNAIL, INSULATION ADJUSTMENT	244			
-	1	1	1	1	2079764-1	WASHER, WAVE SPRING, CREST-TO-CREST	243			
6	-	1	1	1	2119083-1	RETAINER, INSULATION DIAL	242			
-	1	1	1	1	7-18023-7	SCR, SKT HD CAP M3 X 4.0	241			
-	-	2	-	-	2168400-6	SHCS, LOW HEAD, RoHS, M5 X 16	240			
-	-	-	-	1	2119580-1	MECHANICAL FEED ASSEMBLY	239			
-	-	-	1	-	2063440-1	AIR FEED MODULE	238			
-	-	-	1	-	2119740-2	TAG, IDENTIFICATION	213			
-	-	1	-	-	1901094-3	SPACER, FEEDER	198			
6	-	1	1	1	2-1752354-0	STANDOFF, HOLD-DOWN	180			
-	1	1	1	1	993111-1	PIN, SLOTTED SPRING 3.0 X 20.0	177			
-	1	1	1	1	8-22280-7	SPRING, COMPRESSION	176			
-	1	1	1	1	1752353-2	GUIDE PIN, HOLDDOWN	175			
-	1	1	1	1	1901680-2	GUIDE PIN, HOLDDOWN	174			
-	-	-	2	-	21045-3	RING, RETAIN, EXTERN, 3/16 CRESCENT	172			
-	1	1	1	1	994969-1	MAGNET, RARE EARTH HIGH ENERGY	166			
-	REF	REF	REF	REF	994970-2	COUNTER, MAGNETIC	164			
-	-	-	1	-	240638-1	SPRING, FEED FINGER	163			
-	1	1	1	1	8-21084-1	O-RING, .801 ID, .070 DIA, MAT.	152			
-	-	-	1	-	2119641-2	FEED CAM, AIR FEED	151			
-	1	1	1	1	2119798-2	DETENT PIN	145			
-	1	1	1	1	2079383-8	SCR, BHSC, RoHS (M4 X 16)	144			
-	4	4	4	4	2168400-5	SHCS, LOW HEAD, RoHS, M4 X 20	143			
-	-	-	-	1	2119653-2	FEED CAM, POST FEED	142			
-	1	1	1	1	2-2119656-2	APPLICATOR BASIC ASSEMBLY, SF	141			
-	1	1	1	1	2119650-1	RAM, ASIAN STYLE, SIDE FEED	140			
-	1	1	1	1	2119092-2	BOLT, ADJUSTMENT	139			
-	-	-	1	-	3-23627-7	PIN, RETAIN, GRVD, 3/16 X .854	137			
-	-	-	1	-	2119799-1	HOLDER, FEED FINGER, AF	136			
-	-	REF	-	-	SEE NOTE 4	MEMORY CHIP, PROGRAMMED	135			
-	-	1	-	-	1633743-1	SERVO FEED LATCH ASM	133			
-	1	1	1	1	1-18028-2	WASHER, FLAT, REG M4	119			
-	-	REF	-	-	2119944-1	FEED FINGER ASSEMBLY, SF	117			
-	1	1	1	1	455888-5	SPACER, CRIMPER	82			
-	1	1	1	1	2119956-1	DOCUMENTATION PACKAGE	71			
-	1	-	1	1	2119740-1	TAG, IDENTIFICATION	67			
-	2	2	2	2	2168078-1	SCREW, DRIVE, RH, RoHS, 2 x .188	66			
6	-	1	1	1	2119793-1	LIMITER, ADJUSTMENT BOLT	63			
-	3	3	3	3	992763-5	SCR, SET, SOC, CONE POINT, M3 X 4.0	62			
-	-	-	1	1	5-18022-5	SCR, HEX HD CAP, M4 X 6.0	59			
3	-	1	1	1	985575-3	SCR, FLT SKT HD CAP M3 X 10.0	57			
-	-	-	1	1	1338685-1	PAWL, FEED	56			
-	1	1	1	1	1-5018030-0	NUT, HEX, REG, RoHS, M3.5	52			
-	1	1	1	1	1901681-1	HOLDDOWN, TERMINAL	51			
-	-	-	1	2	18023-9	SCR, SKT HD CAP M4 X 6.0	49			
-	-	-	-	1	2119652-1	FEED CAM, PRE FEED	48			
-	1	1	1	1	2079383-7	SCR, BHSC, RoHS (M8 X 25)	41			
-	1	1	1	1	2119645-1	DISC, NUMBERED FA WIRE ADJUSTMENT	40			
-	1	1	1	1	2119957-1	APPLICATOR SHIM PACK	39			
-	1	1	1	1	1-2119644-2	RAM WASHER, PRECISION	38			
-	1	1	1	1	1752356-3	SUPPORT, TERMINAL	34			
-	2	2	2	2	2079383-5	SCR, BHSC, RoHS (M4 X 20)	33			
-	1	1	1	1	2161328-1	HEX HEAD, FLANGED, M5 X 8mm LONG	32			
-	1	1	1	1	1-1320908-0	SPACER, STRIP GUIDE	30			
-	1	1	1	1	2119959-1	ASSEMBLY, STRIP GUIDE	29			
-	1	1	1	1	455888-3	SPACER, CRIMPER	28			
-	1	1	1	1	1320928-2	STRIP GUIDE	24			
-	1	1	1	1	2168083-2	SCR, SKT HD CAP, RoHS, M4 X 8.0	21			
-	1	1	1	1	1-18028-2	WASHER, FLAT, REG M4	20			
-	1	1	1	1	2119533-1	STRIPPER, SIDE FEED	19			
1	1	1	1	1	2119806-1	INSERT, SHEAR	13			
-	1	1	1	1	3-22280-3	SPRING, COMPRESSION	12			
-	1	1	1	1	1-356885-4	STOP, SHEAR	11			
1	1	1	1	1	2119805-1	SHEAR HOLDER, FRONT	10			
1	1	1	1	1	318707-1	FLOATING SHEAR, FRONT	9			
1	1	1	1	1	1333205-5	ANVIL, COMBINATION	8			
-	1	1	1	1	2-2119781-4	DEPRESSOR, SHEAR	5			
-	1	1	1	1	2-238011-2	BLOCK, CRIMPER SPACER	4			
1	1	1	1	1	3-2119784-8	CRIMPER, INSULATION O PREMIUM	3			
-	1	1	1	1	1-455888-4	SPACER, CRIMPER	2			
1	1	1	1	1	4-456406-1	CRIMPER, WIRE PREMIUM	1			

DIMENSIONS:		TOLERANCES UNLESS OTHERWISE SPECIFIED:		DRAWING NO		RESTRICTED TO	
mm	Ø PLC ±0.5	PLC ±0.13	PLC ±0.013	FINISH	SCALE	SHEET	REV
	3 PLC ±0.001	ANGLES	±	APVD	1:2	3 of 4	A
MATERIAL				NAME	Customer Accessible Production Drawing		
				TE Connectivity	Ocean Side Feed Applicator		
				APVD	A1 00779 ©=2266060		

LOC	DIST	REVISIONS				
		P	LTN	DATE	OWN	APVD
A	66	-	SEE SHEET 1	-	-	-

# FEED TYPE MECHANICAL



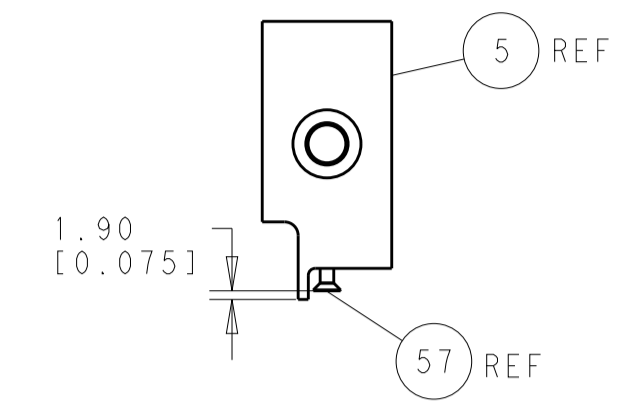
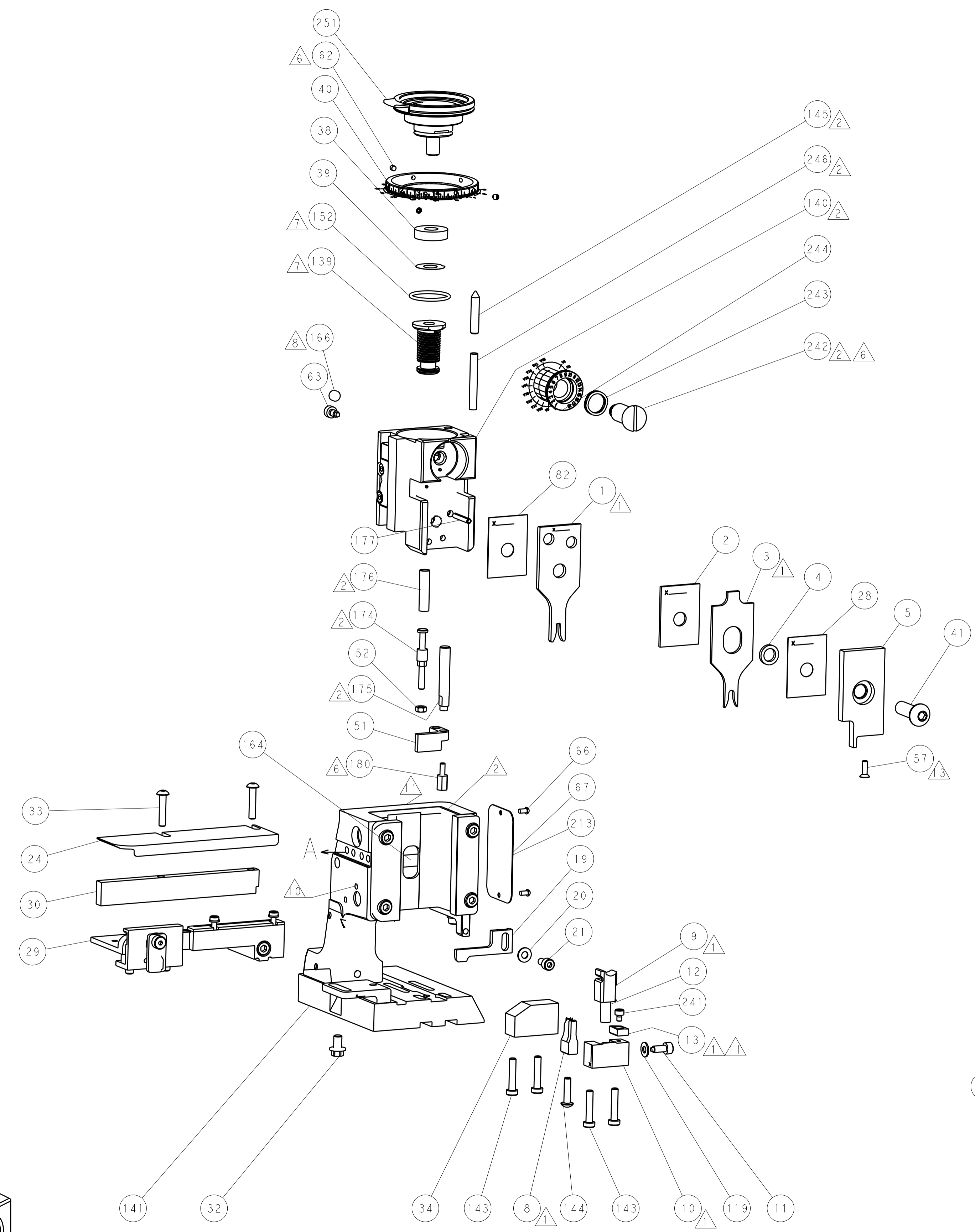
# PNEUMATIC



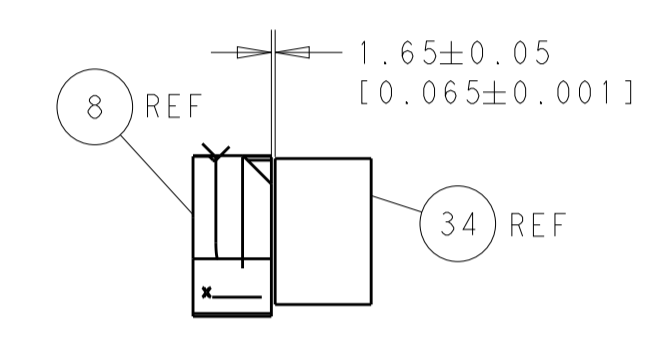
# SERVO LATCH PLATE



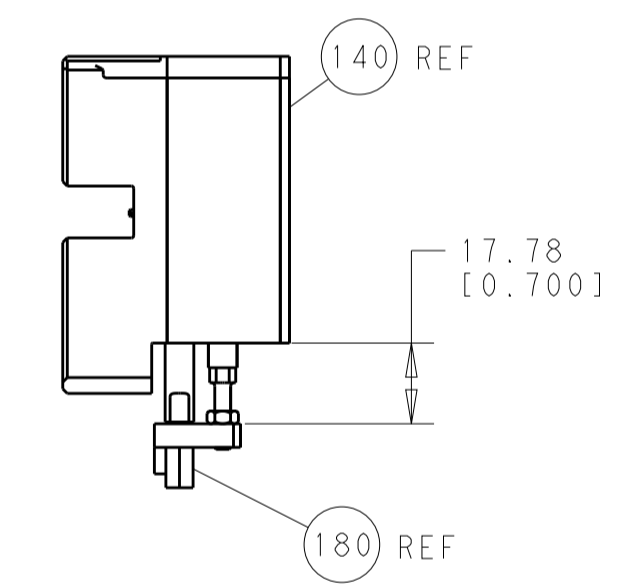
# CAM POSITIONS



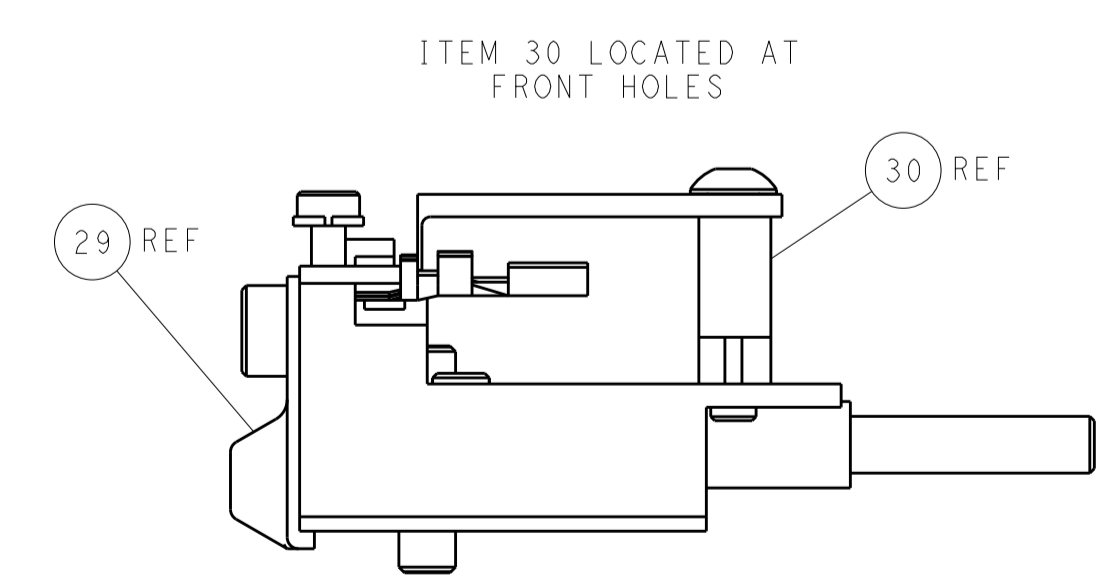
SHEAR DEPRESSOR DETAIL



TERMINAL SUPPORT LOCATION



HOLDDOWN SET-UP



FEED TRACK POSITION GUIDE BY INSULATION BARREL

**PACIFIC VERSION**  
 Shown on sheets 3 of 4 & 4 of 4  
 (Atlantic version shown on sheets 1 of 4 & 2 of 4)

DIMENSIONS:		TOLERANCES UNLESS OTHERWISE SPECIFIED:		DWN: H. HUANG 27SEP2013		TE Connectivity	
mm	0 PLC ±0.5	1 PLC ±0.5	2 PLC ±0.13	3 PLC ±0.013	4 PLC ±0.001	APVD: L. ZHANG 27SEP2013	Harrisburg, PA 17105-3608
MATERIAL:		FINISH:		NAME: Ocean Side Feed Applicator		RESTRICTED TO:	
				SIZE: A1 00779 C=2266060		SCALE: 1:2 SHEET 4 OF 4 REV A	