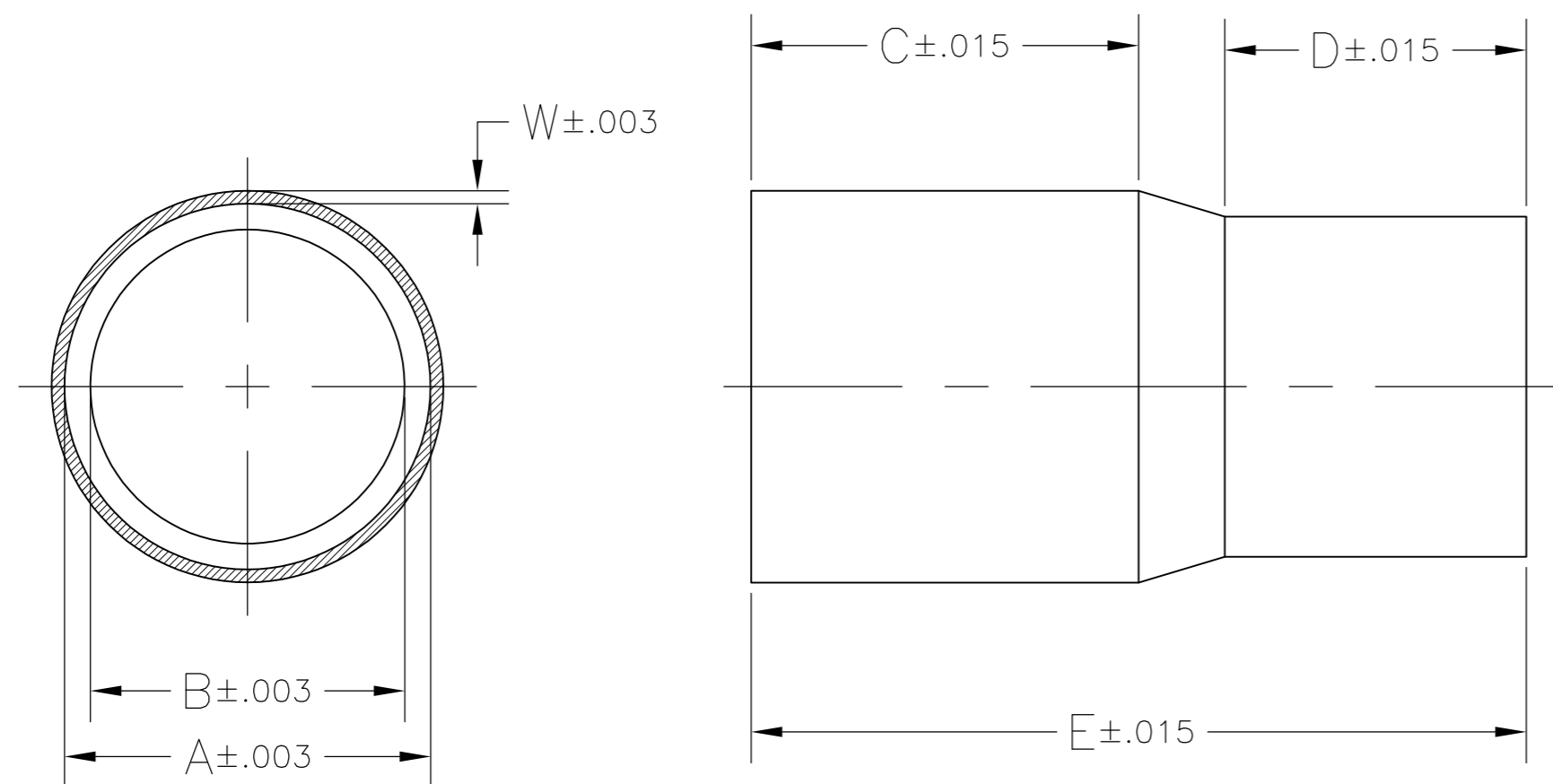


THIS DRAWING IS UNPUBLISHED. RELEASED FOR PUBLICATION
 © COPYRIGHT BY TYCO ELECTRONICS CORPORATION. ALL RIGHTS RESERVED.

LOC		DIST		REVISIONS			
P	LTR	DESCRIPTION	DATE	DWN	APVD		
	J1	REVISED PER ECO-09-024717	05NOV09	KK	AEG		



1. HARDNESS VALUE SHOULD BE 80 DPH MAX (AVG OF 3 READINGS) USING A 100 GRAM LOAD.
- △2 OBSOLETE PART NUMBER.
- △3 FINISH: .000100 MIN BRIGHT TIN-LEAD
- △4 FINISH: .000100 MIN TIN
- △5 OBSOLETE PARTS: OBSOLETE CIS STREAMLINING PER D.RENAUD/D.SINISI

△5 OBSOLETE	△4	.900	.250	.550	.023	.525	.600	5-102903-8
	△4	.900	.250	.550	.023	.550	.600	5-102903-7
	△4	.900	.250	.550	.023	.425	.525	5-102903-6
	△4	.900	.250	.550	.023	.465	.525	5-102903-5
	△4	.900	.250	.550	.023	.365	.460	5-102903-4
	△4	.900	.350	.450	.023	.250	.425	5-102903-3
	△4	.900	.350	.450	.023	.300	.425	5-102903-2
	△4	.900	.350	.450	.023	.365	.425	5-102903-1
	△3	.900	.250	.550	.023	.525	.600	3-102903-6
△3	.900	.250	.550	.023	.550	.600	3-102903-3	
△3	.900	.250	.550	.023	.425	.525	3-102903-0	
△5 OBSOLETE	△3	.900	.250	.550	.023	.465	.525	2-102903-7
△5 OBSOLETE	△3	.900	.250	.550	.023	.365	.460	2-102903-4
△2		.900	.250	.550	.023	.425	.460	2-102903-1
△2		.460	.150	.260	.015	.195	.265	1-102903-8
△5 OBSOLETE	△3	.900	.350	.450	.023	.250	.425	1-102903-5
△2		.900	.250	.550	.023	.265	.425	1-102903-2
△5 OBSOLETE	△3	.900	.350	.450	.023	.300	.425	102903-9
△2		.900	.250	.550	.023	.325	.425	102903-6
△3		.900	.350	.450	.023	.365	.425	102903-3
FINISH		E	D	C	W (WALL THK.)	B (INSIDE DIA)	A (INSIDE DIA)	PART NUMBER

THIS DRAWING IS A CONTROLLED DOCUMENT.

DWN E. BRANDBERG 15DEC92	Tyco Electronics Tyco Electronics Corporation Harrisburg, PA 17105-3608
CHK J. GESFORD 20JAN93	
APVD D. DUPLER 20JAN93	NAME
PRODUCT SPEC	
APPLICATION SPEC	
MATERIAL SOFT COPPER	FINISH SEE TABLE
WEIGHT -	
CUSTOMER DRAWING	

SIZE A2	CAGE CODE 00779	DRAWING NO C=102903	RESTRICTED TO -
SCALE 5:1	SHEET 1 of 1	REV J1	