

ATLANTIC VERSION TERMINATOR INTERFACE ADAPTER	PART NUMBER	REVISION	DESCRIPTION	FEED TYPE
	2150323-1	A	FINE CRIMP HEIGHT ADJUST	MECHANICAL
	2150323-2	A	FINE CRIMP HEIGHT ADJUST	PNEUMATIC
	2150323-5	A	FINE CRIMP HEIGHT ADJUST	SERVO LATCH PLATE <sup>4</sup>
	2150323-6	A	NON-CRIMP HEIGHT ADJUST	SERVO LATCH PLATE <sup>4</sup> <sup>12</sup>
	2150323-7	A	FINE CRIMP HEIGHT ADJUST	NONE
	7-2150323-7	A	CRIMP TOOLING KIT	-

APPLICATOR DATA		
CRIMP	SIZE	TYPE
WIRE	3.50 mm [.138]	F
INSUL	4.50 mm [.177]	F
APPL INSTRUCTIONS 408-10390		

TERMINAL DATA: TE TERMINAL		TE CRIMP SPECIFICATION	
TERMINAL NAME: FASTON CONNECTOR, .250 SERIES			
WIRE STRIP LENGTH		INSULATION DIAMETER RANGE	
5.84-6.60 mm [.230-.260 IN]		Ø3.80-5.10 mm [.150-.201 IN]	
TERMINAL APPLICATION SPECIFICATION	114-20023		
TERMINALS APPLIED			
TE TERMINAL	TE TERMINAL	TE TERMINAL	TE TERMINAL
1-160301-6	1-160301-8	1-160301-9	2-160301-8
2-160301-9			

WIRE SIZE	CRIMP HEIGHT mm [INCH]	CRIMP HEIGHT REFERENCE SETTING
4.00mm <sup>2</sup>	2.51+/-0.03 [.099+/-0.001]	9.8

1. RECOMMENDED SPARE PARTS
2. GREASE BEARING SURFACES LIGHTLY
3. LUBRICATE DAILY PER THE APPLICATOR INSTRUCTION SHEET SUPPLIED WITH THE APPLICATOR.
4. APPLICATOR SPECIFIC DATA TO BE ENTERED INTO BLANK MEMORY CHIP AT ASSEMBLY. SEE BELOW FOR PART NUMBER:  
 MECHANICAL FEED WITH "SMART APPLICATOR" CONVERSION: 8-2150323-4  
 PNEUMATIC FEED WITH "SMART APPLICATOR" CONVERSION: 8-2150323-4  
 SERVO FEED WITH "FINE CRIMP HEIGHT ADJUST": 8-2150323-5  
 SERVO FEED WITH "NON-CRIMP HEIGHT ADJUST": 8-2150323-6
5. ADJUSTMENT OF THE STRIPPER MAY BE REQUIRED WHEN MOVING THE APPLICATOR BETWEEN BENCH AND LEADMAKER APPLICATIONS.
6. APPLY PART NUMBER 1-23419-5 LOCTITE TO THREADS OF ITEMS 62 & 242. FOR -6 ONLY APPLY PART NUMBER 1-23419-5 LOCTITE TO THREADS OF ITEMS 37 & 242.
7. GREASE THREADS, GROOVE AND O-RING ON ITEMS 35 & 252.
8. MAGNET, ITEM 166 MUST BE ORIENTED CORRECTLY IN ORDER TO PROPERLY ACTUATE THE COUNTER.
9. CRIMP HEIGHT REFERENCE SETTING WAS THE SETTING USED WHEN THE APPLICATOR WAS QUALIFIED AT THE FACTORY. ADJUSTMENT MAY BE NECESSARY WHEN RUNNING APPLICATOR IN THE FIELD.
10. SPARE FEED CAM STORAGE LOCATION REFER TO INSTRUCTION SHEET FOR ADDITIONAL INFORMATION.
11. THE RECOMMENDED SET-UP FOR END FEED APPLICATORS IS POST-FEED WITH ITEM 2119653-1. THE APPLICATOR CAN BE CONFIGURED FOR PRE-FEED WITH ITEM 2119652-1 BUT MAY ENCOUNTER PROBLEMS WITH SOME APPLICATIONS. FEED ISSUES OR TERMINAL JAMMING MAY OCCUR IN THE PRE-FEED CONFIGURATION.
12. WHEN ASSEMBLING -6 NON-CRIMP HEIGHT ADJUST APPLICATOR USE SHIM PACK 2119957-2 TO ALIGN APPLICATOR'S MAXIMUM WIRE CRIMP HEIGHT AT NORMAL TERMINATOR SHUT HEIGHT

APPLICATOR STYLE CONVERSION CHART										
CONVERT TO			PART NUMBERS REQUIRED							
PNEUMATIC FEED	2119950-1	2119792-2	-	2119641-1	-	2063440-1				
SERVO LATCH PLATE	2119951-1	1901697-1	8-2150323-5	-	-	2168400-7 (QUANTITY 2)				
SMART APPLICATOR	2161326-1	-	8-2150323-4	-	-	-				
MECHANICAL FEED	2119949-1	2063961-1	5-18022-5	2119653-1	-	-				
SERVO LATCH PLATE	2119951-1	1901697-1	8-2150323-5	-	-	2168400-7 (QUANTITY 2)				
SMART APPLICATOR	2161326-1	-	8-2150323-4	-	-	-				
MECHANICAL FEED	2119949-1	2063961-1	5-18022-5	2119653-1	-	-				
PNEUMATIC FEED	2119950-1	2119792-2	-	2119641-1	-	2063440-1				
-	-	-	-	-	-	-				
-	-	-	-	-	-	-				
-	-	-	-	-	-	-				
-	-	-	-	-	-	-				

-	-	1	-	-	-	2119957-2	APPLICATOR SHIM PACK	260
-77	-7	-6	-5	-2	-1	PART NO	DESCRIPTION	ITEM NO

ATLANTIC VERSION  
Shown on sheets 1 of 4 & 2 of 4  
(Pacific version shown on sheets 3 of 4 & 4 of 4)

SET UP GAUGE 2119599-2	LOC A	DIST 66	REVIEWS				
			P	LM	DATE	OWN	APVD
	A	66	RELEASED		25NOV2013	LG	TE

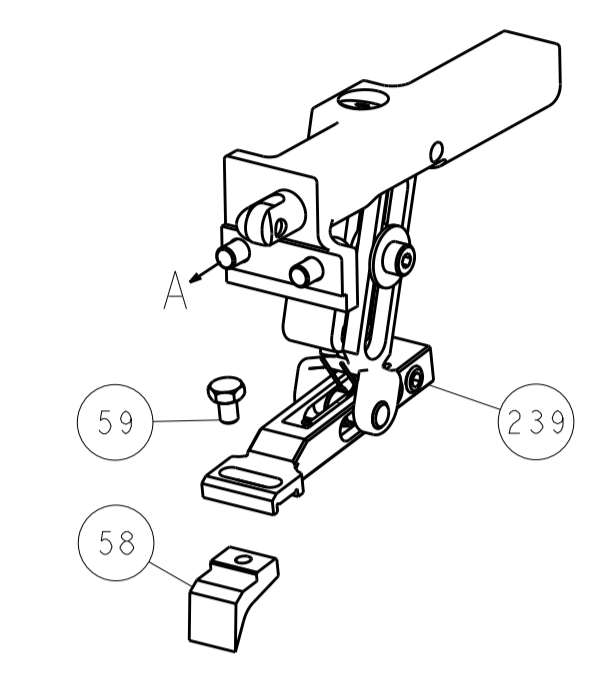
-	1	-	1	1	1	8-21084-0	O-RING, .676 ID, .070 DIA. MAT.	252
-	-	-	-	1	-	2119640-1	PUSH ROD, AIR FEED	250
-	-	-	-	-	-	2079988-1	BUSHING, LCH5-12, MISOUMI	249
-	-	-	-	1	-	2119641-1	FEED CAM, AIR FEED	248
-	1	-	1	1	1	2119798-1	DETENT PIN	247
-	1	-	1	1	1	1-22279-3	SPRING, COMPRESSION	246
-	-	1	-	-	-	2119759-1	RAM, AMP STYLE, END FEED, NON-ADJUST	245
-	1	1	1	1	1	2119082-9	CAM, SNAIL, INSULATION ADJUSTMENT	244
-	1	1	1	1	1	2079764-1	WASHER, WAVE SPRING, CREST-TO-CREST	243
-	1	1	1	1	1	2119083-1	RETAINER, INSULATION DIAL	242
-	-	2	2	-	-	2168400-7	SHCS, LOW HEAD, RoHS, M5 X 10	240
-	-	-	-	-	-	2119580-1	MECHANICAL FEED ASSEMBLY	239
-	-	-	-	1	-	2063440-1	AIR FEED MODULE	238
-	-	1	1	-	-	2119740-2	TAG, IDENTIFICATION	213
-	-	REFREF	-	-	-	1901697-1	FEED FINGER ASSEMBLY, EF	183
-	-	-	-	2	-	21045-3	RING, RETAIN, EXTERN, 3/16 CRESCENT	172
-	1	1	1	1	1	994969-1	MAGNET, RARE EARTH HIGH ENERGY	166
-	REFREF	REFREF	REFREF	REFREF	REFREF	994970-2	COUNTER, MAGNETIC	164
-	-	-	-	1	-	240638-1	SPRING, FEED FINGER	163
-	-	-	-	-	1	3-23627-7	PIN, RETAIN, GRVD, 3/16 X .854	137
-	-	REFREF	-	-	-	SEE NOTE 4	MEMORY CHIP, PROGRAMMED	135
-	-	1	1	-	-	1633743-1	SERVO FEED LATCH ASM	133
-	1	1	1	1	1	455888-5	SPACER, CRIMPER	82
-	1	1	1	1	1	2119791-5	DEPRESSOR, WIRE	73
-	1	1	1	1	1	2119956-2	DOCUMENTATION PACKAGE	71
-	2	2	2	2	2	2-18032-2	SCR, SET, FLT POINT M3 X 10.0	70
-	1	-	-	-	1	2119740-1	TAG, IDENTIFICATION	67
-	2	2	2	2	2	2168078-1	SCREW, DRIVE, RH, RoHS, 2 x .188	66
-	2	2	2	2	2	2168400-5	SHCS, LOW HEAD, RoHS, M4 X 20	64
-	1	-	1	1	1	2119793-1	LIMITER, ADJUSTMENT BOLT	63
-	3	-	3	3	3	992763-5	SCR, SET, SOC, CONE POINT, M3 X 4.0	62
-	1	1	1	1	1	2079383-4	SCR, BHSC, RoHS (M4 X 8)	60
-	-	-	-	-	-	5-18022-5	SCR, HEX HD CAP, M4 X 6.0	59
-	-	-	-	-	-	2063961-1	FEED FINGER	58
-	3	3	3	3	3	2168400-4	SHCS, LOW HEAD, RoHS, M4 X 8	57
-	2	2	2	2	2	1-2168083-0	SCR, SKT HD CAP, RoHS, M4 X 10	56
-	2	2	2	2	2	5018030-2	NUT, HEX, REG, RoHS, M4	55
-	2	2	2	2	2	5018030-1	NUT, HEX, REG, RoHS, M3	54
-	2	2	2	2	2	986965-8	NUT, LOCK, HEX, TORQUE (M4)	53
-	-	-	-	-	-	2119792-2	PAWL, EF, AIR	51
-	-	-	-	-	2	18023-9	SCR, SKT HD CAP M4 X 6.0	49
-	-	-	-	-	-	2119652-1	FEED CAM, PRE FEED	48
-	-	-	-	-	-	2119653-1	FEED CAM, POST FEED	47
-	1	1	1	1	1	2119655-5	APPLICATOR BASIC ASSEMBLY, EF	46
-	1	-	1	1	1	2119369-1	RAM, AMP STYLE, END FEED	44
-	1	1	1	1	1	2079383-7	SCR, BHSC, RoHS (M8 X 25)	41
-	1	-	1	1	1	2119645-1	DISC, NUMBERED FA WIRE ADJUSTMENT	40
-	1	-	1	1	1	2119957-1	APPLICATOR SHIM PACK	39
-	1	1	1	1	1	2119644-3	RAM WASHER, PRECISION	38
-	1	1	1	1	1	2119085-1	FA HEAD, ATLANTIC STYLE	37
-	1	-	1	1	1	2119092-1	BOLT, ADJUSTMENT	35
-	7	7	7	7	7	1-18028-2	WASHER, FLAT, REG M4	33
-	2	2	2	2	2	2168083-9	SCR, SKT HD CAP, RoHS, M4 X 20	31
-	2	2	2	2	2	2168083-8	SCR, SKT HD CAP, RoHS, M4 X 16	29
-	1	1	1	1	1	240639-1	STRIPPER (MACHINING)	27
-	2	2	2	2	2	1320906-1	STUD, THREADED	25
-	1	1	1	1	1	1-1752371-6	PLATE, STRIP GUIDE	24
-	1	1	1	1	1	240825-2	PLATE, STRIP HOLD DOWN	23
-	2	2	2	2	2	2-22281-3	SPRING, COMPRESSION	22
-	1	1	1	1	1	1752373-4	DRAG	20
-	2	2	2	2	2	1901259-7	GUIDE, LOWER STRIP	18
-	4	4	4	4	4	1-2079383-1	SCR, BHSC, RoHS (M6 X 12)	17
-	1	1	1	1	1	240644-5	PLATE, REAR SHEAR	11
-	-	-	-	-	-	-	-	10
-	1	1	1	1	1	4-690495-3	PLATE, FRONT SHEAR	9
-	1	1	1	1	1	1803074-5	ANVIL, COMBINATION, END FEED	8
-	1	1	1	1	1	2217206-5	BLADE, SLUG	7
-	-	-	-	-	-	-	-	6
-	1	1	1	1	1	1-240641-2	SPACER	5
-	1	1	1	1	1	3-238009-3	BLOCK, FL CRIMPER SPACER	4
-	1	1	1	1	1	4-1633962-4	CRIMPER, INSULATION F PREMIUM	3
-	1	1	1	1	1	455888-1	SPACER, CRIMPER	2
-	1	1	1	1	1	8-1633609-3	CRIMPER, WIRE	1

DIMENSIONS:	TOLERANCES UNLESS OTHERWISE SPECIFIED:	DATE	REV	DESCRIPTION	DATE	REV	DESCRIPTION
mm	0 PLC ±.5 1 PLC ±.5 2 PLC ±.5 3 PLC ±.5 4 PLC ±.5 ANGLES ±.0001	08OCT2013	1	EL GROSS	08OCT2013	1	EL GROSS
		08OCT2013	2	G. BAILEY	08OCT2013	2	G. BAILEY
		08OCT2013	3	M. CLIFFORD	08OCT2013	3	M. CLIFFORD
MATERIAL:	FINISH:	WEIGHT:	Customer Accessible Production Drawing		SCALE:	1:1 SHEET 1 OF 4	
Customer Accessible Production Drawing			SCALE: 1:1		SHEET: 1	OF: 4	REV: A

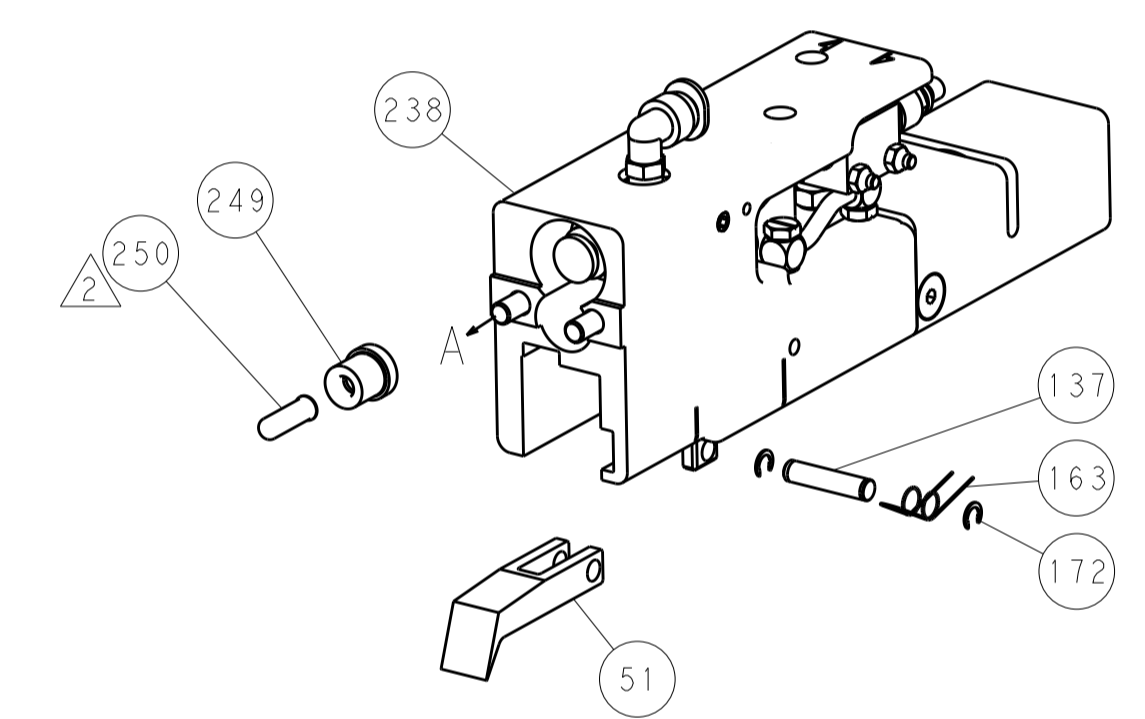
SHEETS 3 & 4 ARE NOT REQUIRED FOR ATLANTIC VERSION

LOC	DIST	REV	DATE	BY	APPV
A	66				

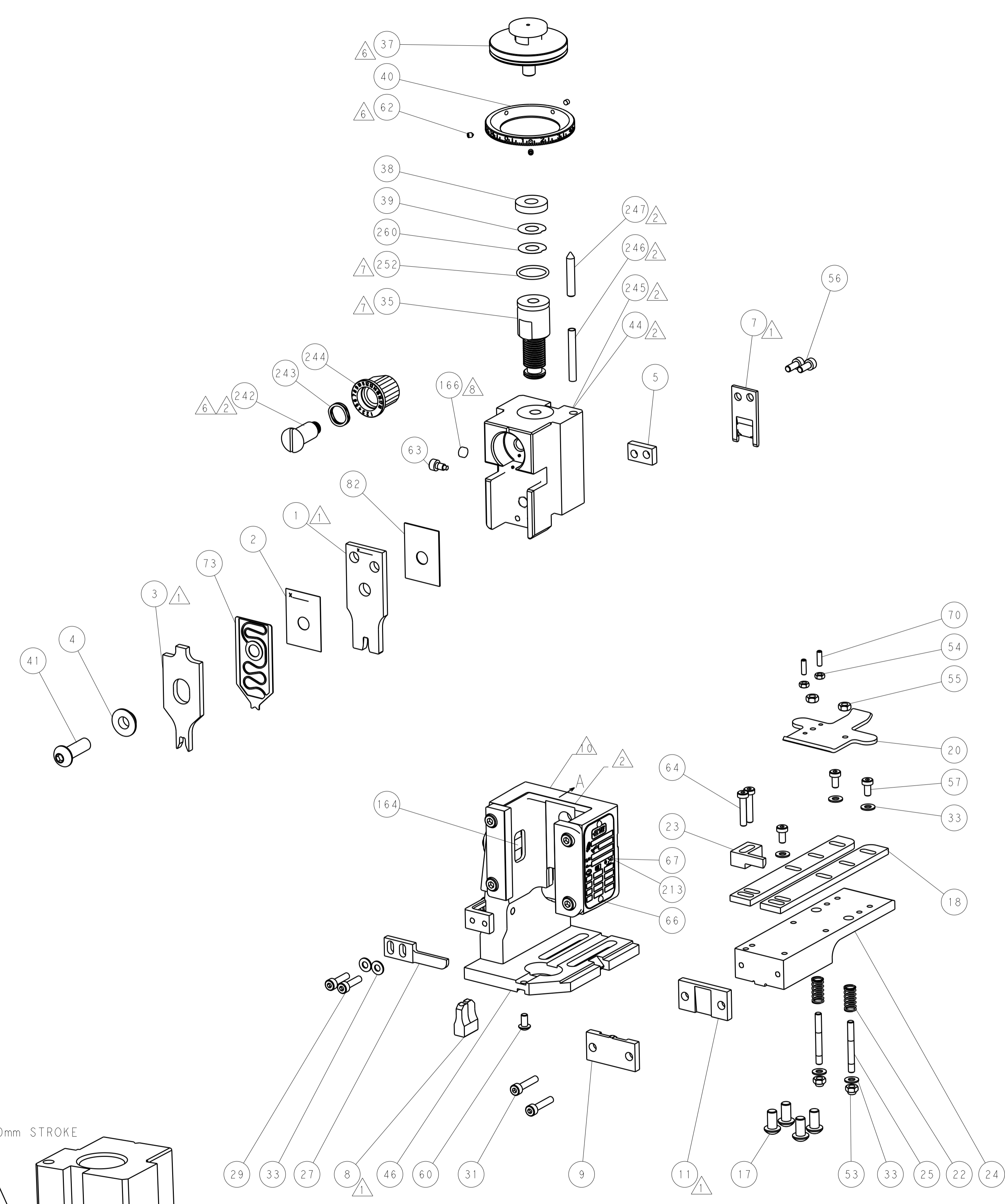
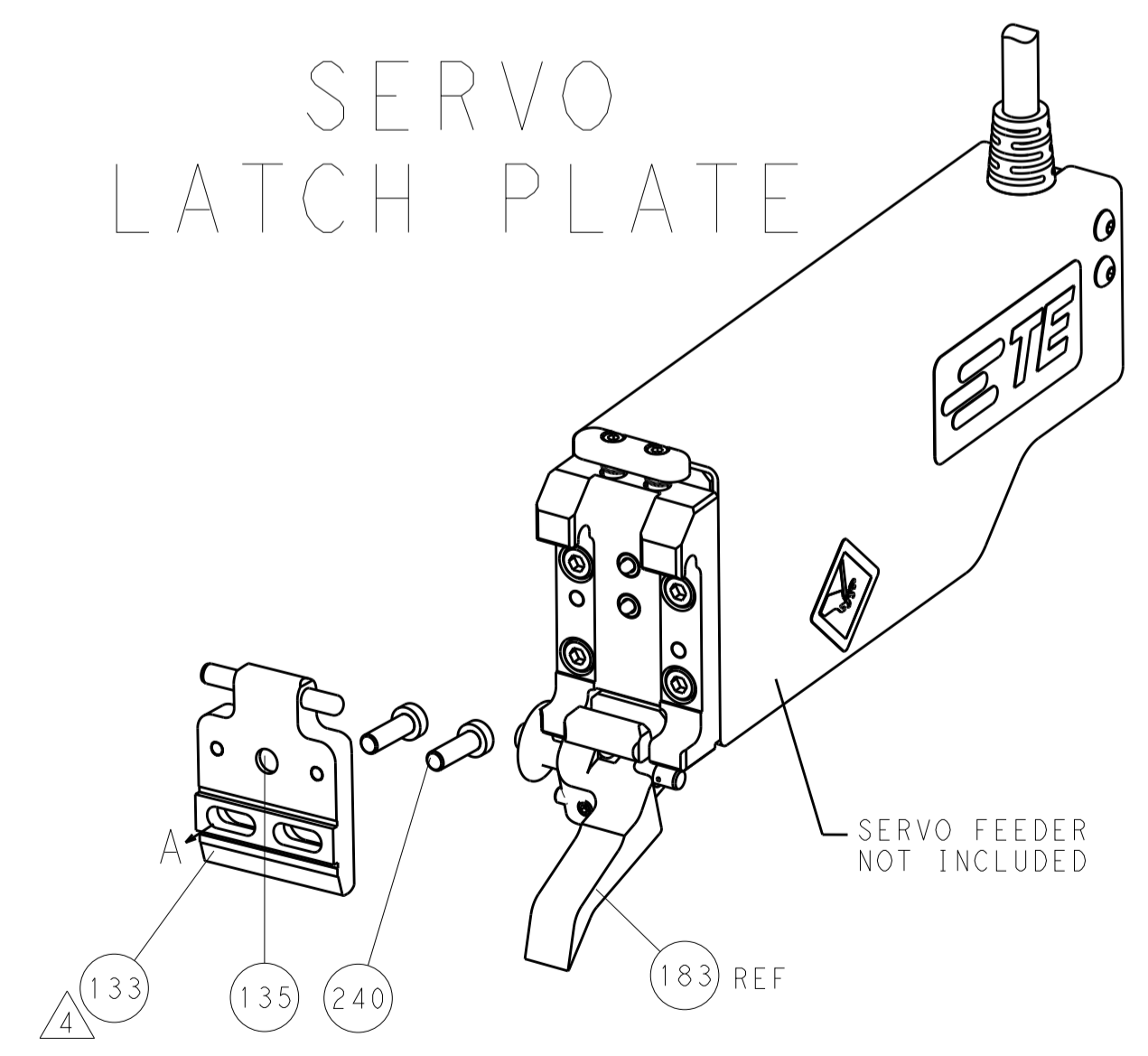
# FEED TYPE MECHANICAL



# PNEUMATIC



# SERVO LATCH PLATE

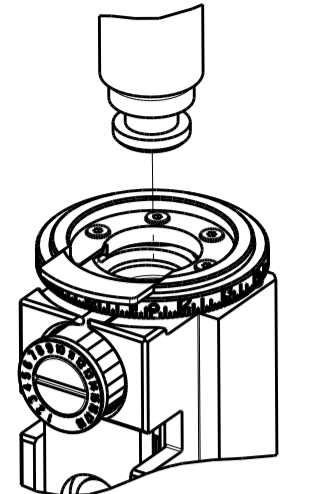


# CAM POSITIONS



**ATLANTIC VERSION**  
 Shown on sheets 1 of 4 & 2 of 4  
 (Pacific version shown on sheets 3 of 4 & 4 of 4)

DIMENSIONS: mm 		TOLERANCES UNLESS OTHERWISE SPECIFIED: 0 PLC ±0.5 1 PLC ±0.13 3 PLC ±0.013 4 PLC ±0.001 ANGLES ±0.001		DWN: L. GROSS 08OCT2013 CHK: G. BAILEY 08OCT2013 APVD: M. CLIFFORD 08OCT2013 PRODUCT SPEC: APPLICATION SPEC: WEIGHT: CUSTOMER ACCESSIBLE PRODUCTION DRAWING		NAME: Ocean End Feed Applicator SIZE: A1 CAGE CODE: 00779 DRAWING NO: 2150323 SCALE: 1:1 SHEET: 2 OF 4 REV: A	
-----------------------	--	--	--	---	--	---	--

PACIFIC VERSION TERMINATOR INTERFACE ADAPTER	PART NUMBER	REVISION	DESCRIPTION	FEED TYPE	APPLICATOR STYLE CONVERSION CHART						
					CONVERT TO	PART NUMBERS REQUIRED					
					PNEUMATIC FEED	2119950-1	2119792-2	-	2119641-2	-	2063440-1
	2-2150323-1	A	FINE CRIMP HEIGHT ADJUST	MECHANICAL	SERVO LATCH PLATE	2119951-1	1901697-1	8-2150323-5	-	-	2168400-7 (QUANTITY 2)
	2-2150323-2	A	FINE CRIMP HEIGHT ADJUST	PNEUMATIC	SMART APPLICATOR	2161326-1	-	8-2150323-4	-	-	-
	2-2150323-5	A	FINE CRIMP HEIGHT ADJUST	SERVO LATCH PLATE	MECHANICAL FEED	2119949-1	2063961-1	5-18022-5	2119653-2	-	-
	2-2150323-7	A	FINE CRIMP HEIGHT ADJUST	NONE	SERVO LATCH PLATE	2119951-1	1901697-1	8-2150323-5	-	-	2168400-7 (QUANTITY 2)
	7-2150323-7	A	CRIMP TOOLING KIT	-	SMART APPLICATOR	2161326-1	-	8-2150323-4	-	-	-
					MECHANICAL FEED	2119949-1	2063961-1	5-18022-5	2119653-2	-	-
					PNEUMATIC FEED	2119950-1	2119792-2	-	2119641-2	-	2063440-1
						-	-	-	-	-	-
						-	-	-	-	-	-

APPLICATOR DATA		
CRIMP	SIZE	TYPE
WIRE	3.50 mm [ .138 ]	F
INSUL	4.50 mm [ .177 ]	F
APPL INSTRUCTIONS 408-10390		

TERMINAL DATA: TE TERMINAL		TE CRIMP SPECIFICATION	
TERMINAL NAME: FASTON CONNECTOR, .250 SERIES			
WIRE STRIP LENGTH		INSULATION DIAMETER RANGE	
5.84-6.60 mm [ .230- .260 IN ]		3.80-5.10 mm [ .150- .201 IN ]	
TERMINAL APPLICATION SPECIFICATION		114-20023	
TERMINALS APPLIED			
TE TERMINAL	TE TERMINAL	TE TERMINAL	TE TERMINAL
1-160301-6	1-160301-8	1-160301-9	2-160301-8
2-160301-9			

WIRE SIZE	CRIMP HEIGHT mm [INCH]	CRIMP HEIGHT REFERENCE SETTING
4.00mm2	2.51+/-0.03 [ .099+/- .001 ]	9.8



- RECOMMENDED SPARE PARTS
- GREASE BEARING SURFACES LIGHTLY
- LUBRICATE DAILY PER THE APPLICATOR INSTRUCTION SHEET SUPPLIED WITH THE APPLICATOR.
- APPLICATOR SPECIFIC DATA TO BE ENTERED INTO BLANK MEMORY CHIP AT ASSEMBLY. SEE BELOW FOR PART NUMBER:  
MECHANICAL FEED WITH "SMART APPLICATOR" CONVERSION: 8-2150323-4  
PNEUMATIC FEED WITH "SMART APPLICATOR" CONVERSION: 8-2150323-4  
SERVO FEED WITH "FINE CRIMP HEIGHT ADJUST": 8-2150323-5
- ADJUSTMENT OF THE STRIPPER MAY BE REQUIRED WHEN MOVING THE APPLICATOR BETWEEN BENCH AND LEADMAKER APPLICATIONS.
- APPLY PART NUMBER 1-23419-5 LOCTITE TO THREADS OF ITEMS 62 & 242.
- GREASE THREADS, GROOVE AND O-RING ON ITEMS 139 & 153.
- MAGNET, ITEM 166 MUST BE ORIENTED CORRECTLY IN ORDER TO PROPERLY ACTUATE THE COUNTER.
- CRIMP HEIGHT REFERENCE SETTING WAS THE SETTING USED WHEN THE APPLICATOR WAS QUALIFIED AT THE FACTORY. ADJUSTMENT MAY BE NECESSARY WHEN RUNNING APPLICATOR IN THE FIELD.
- SPARE FEED CAM STORAGE LOCATION REFER TO INSTRUCTION SHEET FOR ADDITIONAL INFORMATION.
- THE RECOMMENDED SET-UP FOR END FEED APPLICATORS IS POST-FEED WITH ITEM 2119653-1. THE APPLICATOR CAN BE CONFIGURED FOR PRE-FEED WITH ITEM 2119652-1 BUT MAY ENCOUNTER PROBLEMS WITH SOME APPLICATIONS. FEED ISSUES OR TERMINAL JAMMING MAY OCCUR IN THE PRE-FEED CONFIGURATION.

**\*WARNING**  
ON INSTALLATION, SET WIRE DISC, ITEM 40 TO LARGEST WIRE SIZE SETTING. USE OF SETTINGS BELOW MINIMUM REQUIRED CRIMP HEIGHT SETTING WILL CAUSE DAMAGE TO CRIMP TOOLING.

PACIFIC VERSION  
Shown on sheets 3 of 4 & 4 of 4  
(Atlantic version shown on sheets 1 of 4 & 2 of 4)

SET UP GAUGE	LOC	DIST	REVISIONS			
2119599-2	A	66	REV	DATE	BY	APPV
-	-	-	1			
			2			
			3			
			4			

REV	DATE	BY	APPV	DESCRIPTION	DATE	BY	APPV
-	-	-	-	SEE SHEET 1	-	-	-
-	1	1	1	2119782-1			251
-	-	-	1	2119640-1			250
-	-	-	1	2079988-1			249
-	1	1	1	1-22279-3			246
-	1	1	1	2119082-9			244
-	1	1	1	2079764-1			243
-	1	1	1	2119083-1			242
-	-	2	-	2168400-7			240
-	-	-	1	2119580-1			239
-	-	-	1	2063440-1			238
-	-	1	-	2119740-2			213
-	4	4	4	2079383-9			186
-	-	REF	-	1901697-1			183
-	-	-	2	21045-3			172
-	1	1	1	994969-1			166
-	REF	REF	REF	994970-2			164
-	-	-	1	240638-1			163
-	1	1	1	8-21084-1			153
-	-	-	1	2119641-2			152
-	1	1	1	2119798-2			145
-	1	1	1	2079383-8			144
-	-	-	1	2119653-2			142
-	1	1	1	2119655-6			141
-	1	1	1	2119651-1			140
-	1	1	1	2119092-2			139
-	-	-	1	3-23627-7			137
-	-	REF	-	SEE NOTE 4			135
-	-	1	-	1633743-1			133
-	1	1	1	455888-5			82
-	1	1	1	2119791-5			73
-	1	1	1	2119956-2			71
-	2	2	2	2-18032-2			70
-	1	-	1	2119740-1			67
-	2	2	2	2168078-1			66
-	2	2	2	2168400-5			64
-	1	1	1	2119793-1			63
-	3	3	3	992763-5			62
-	-	-	1	5-18022-5			59
-	-	-	1	2063961-1			58
-	3	3	3	2168400-4			57
-	2	2	2	1-2168083-0			56
-	2	2	2	5018030-2			55
-	2	2	2	5018030-1			54
-	2	2	2	986965-8			53
-	-	-	1	2119792-2			51
-	-	-	1	18023-9			49
-	-	-	1	2119652-1			48
-	1	1	1	2079383-7			41
-	1	1	1	2119645-1			40
-	1	1	1	2119957-1			39
-	1	1	1	2119644-3			38
-	7	7	7	1-18028-2			33
-	2	2	2	2168083-9			31
-	2	2	2	2168083-8			29
-	1	1	1	240639-1			27
-	2	2	2	1320906-1			25
-	1	1	1	1-1752371-6			24
-	1	1	1	240825-2			23
-	2	2	2	2-22281-3			22
-	1	1	1	1752373-4			20
-	2	2	2	1901259-7			18
-	1	1	1	240644-5			11
-	-	-	-	-			10
-	1	1	1	4-690495-3			9
-	1	1	1	1803074-5			8
-	1	1	1	2217206-5			7
-	-	-	-	-			6
-	1	1	1	1-240641-2			5
-	1	1	1	3-238009-3			4
-	1	1	1	4-1633962-4			3
-	1	1	1	455888-1			2
-	1	1	1	8-1633609-3			1

DIMENSIONS:		TOLERANCES UNLESS OTHERWISE SPECIFIED:		GROSS WEIGHT		NET WEIGHT	
mm	0 PLC ±.5	PLC ±.5	PLC ±.13	g	080CT2013	g	080CT2013
	1 PLC ±0.5	PLC ±0.5	PLC ±0.13	g	080CT2013	g	080CT2013
	3 PLC ±0.13	PLC ±0.13	PLC ±0.13	g	080CT2013	g	080CT2013
	4 PLC ±0.001	PLC ±0.001	PLC ±0.001	g	080CT2013	g	080CT2013
	ANGLES	ANGLES	ANGLES	g	080CT2013	g	080CT2013
MATERIAL:		FINISH:		WT:		WT:	

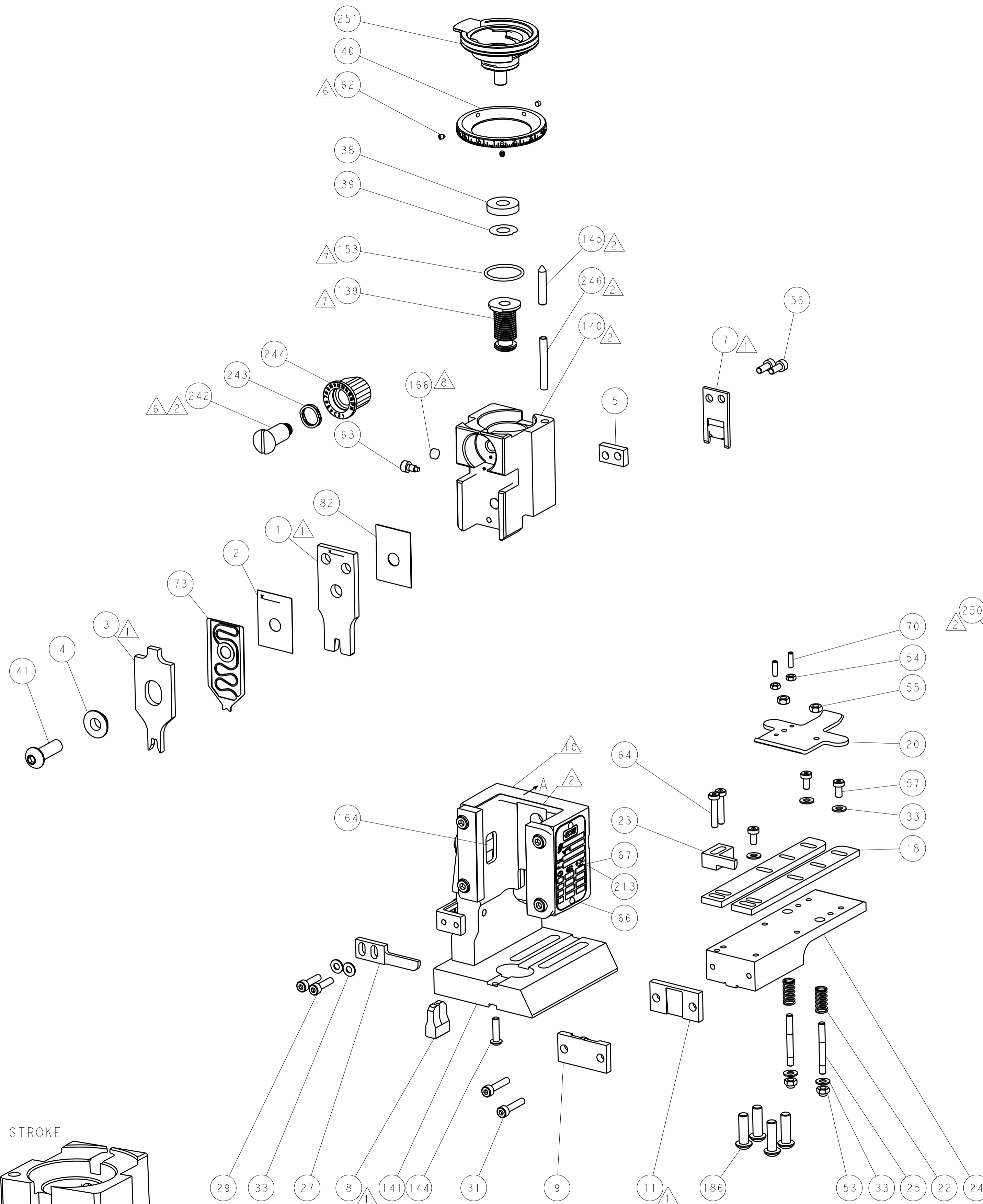


Ocean End Feed  
Appliator

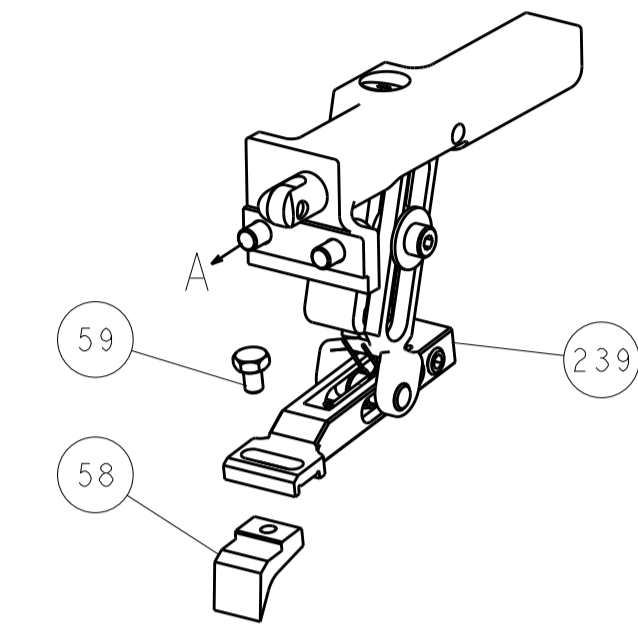
Customer Accessible Production Drawing	SCALE	1:1	SHEET	3	OF	4	REV	A
--	-------	-----	-------	---	----	---	-----	---

SHEETS 1 & 2 ARE NOT REQUIRED FOR PACIFIC VERSION

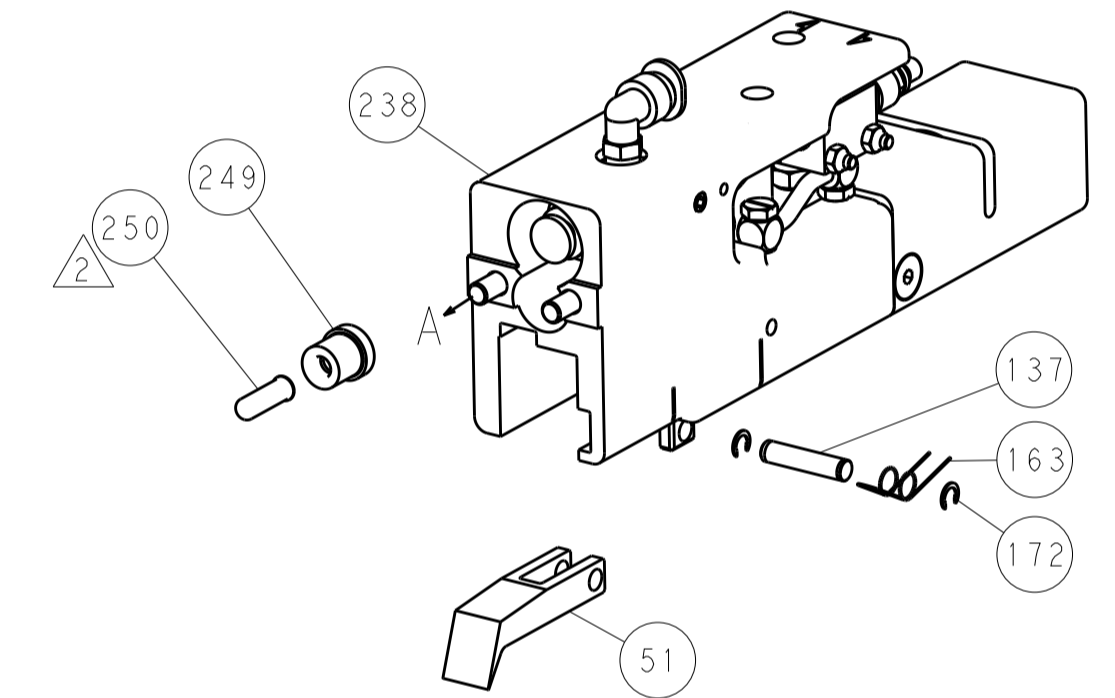
LOC		DIST		REVISIONS			
A	66	P	LTM	DESCRIPTION	DATE	OWN	APVD
		-	-	SEE SHEET 1	-	-	-



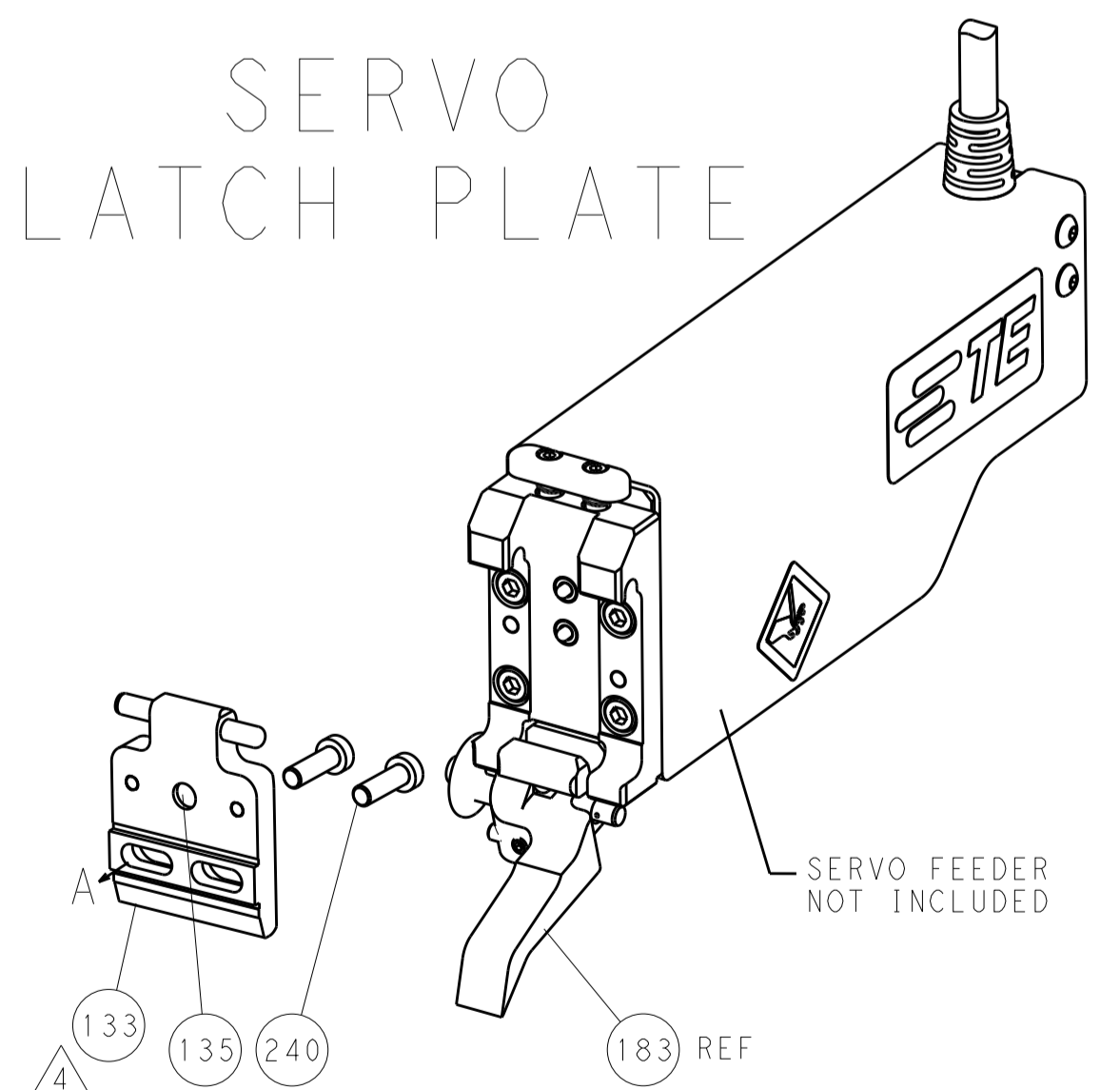
FEED TYPE  
MECHANICAL



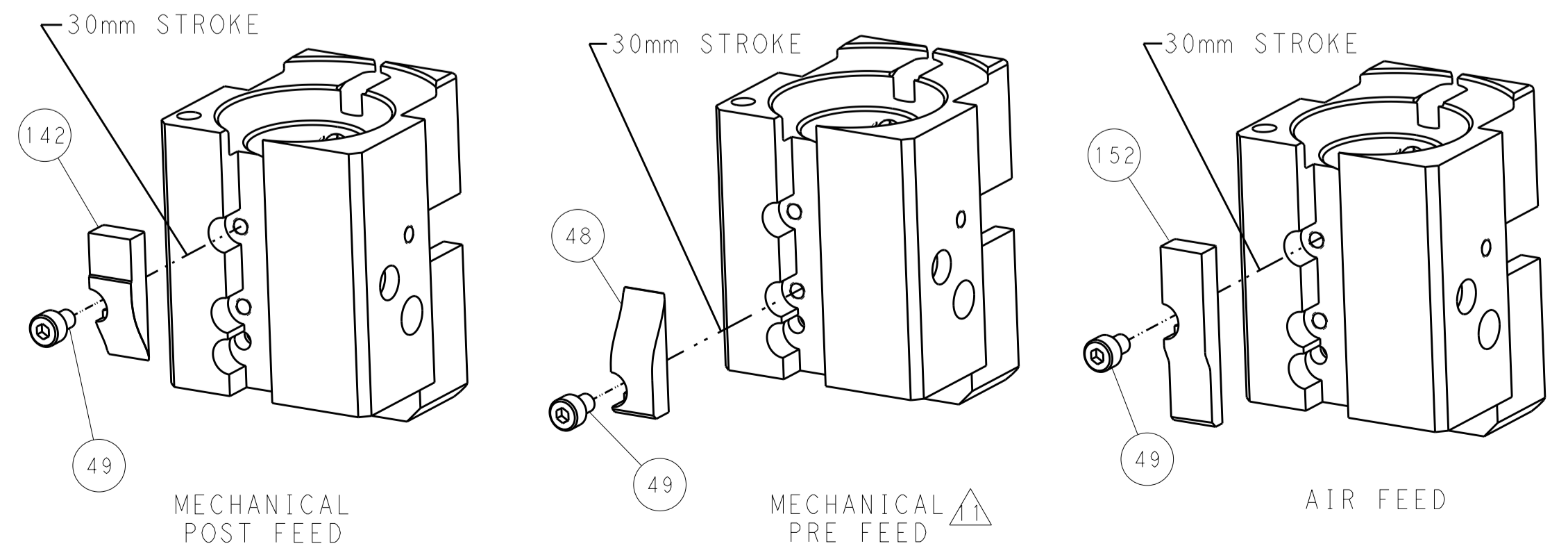
PNEUMATIC



SERVO  
LATCH PLATE



CAM POSITIONS



PACIFIC VERSION  
 Shown on sheets 3 of 4 & 4 of 4  
 (Atlantic version shown on sheets 1 of 4 & 2 of 4)

DIMENSIONS:		TOLERANCES UNLESS OTHERWISE SPECIFIED:		DWN 08OCT2013		TE Connectivity	
mm	0 PLC ±0.5	1 PLC ±0.5	2 PLC ±0.13	3 PLC ±0.13	4 PLC ±0.013	5 PLC ±0.0013	Harrisburg, PA 17105-3608
	ANGLES ±0.0013	FINISH		APVD 08OCT2013		NAME	
MATERIAL				M. CLIFFORD		Ocean End Feed Applicator	
				PRODUCT SPEC		SIZE CAGE CODE DRAWING NO	
				APPLICATION SPEC		A1 00779 C=2150323	
				WEIGHT		RESTRICTED TO	
				Customer Accessible Production Drawing		SCALE 1:1 SHEET 4 OF 4 REV A	