


PART NUMBER	REV	FIRST USED	TERMINATOR	FEED TYPE	DESCRIPTION
1339782-1	B		- BENCH & LEADMAKER	MECH POST FEED	HD-I APPLICATOR
7-1339782-1	B		- BENCH & LEADMAKER	MECH POST FEED	-1 AND SPARE PARTS
7-1339782-7	A		-	-	SPARE PARTS KIT

CRIMP DATA ESCUBEDO TERMINAL AMP CRIMP SPECS 

TERMINAL NAME: TERMINAL FASTON TYPE SERIES 6.3




CRIMP	SIZE	TYPE	RANGE
WIRE	2.03 [.080 IN]	F	0.50mm ² - 1.00mm ²
INSUL	3.81 [.150 IN]	F	1.80-3.30 [.071-.130 IN]
WIRE STRIP LENGTH		APPL INSTRUCTION	
4.80-6.00 [.189-.236 IN]		408-8323	

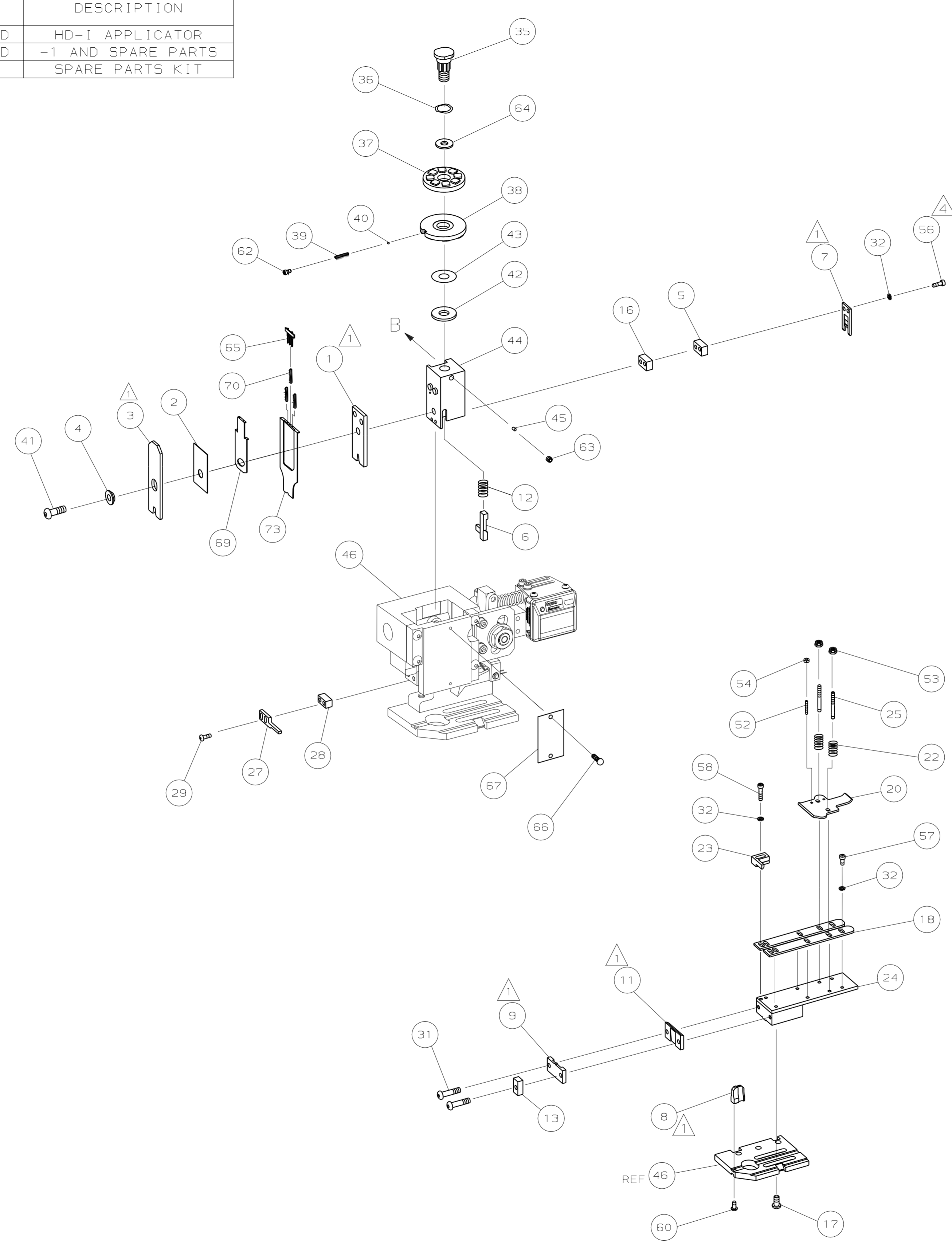
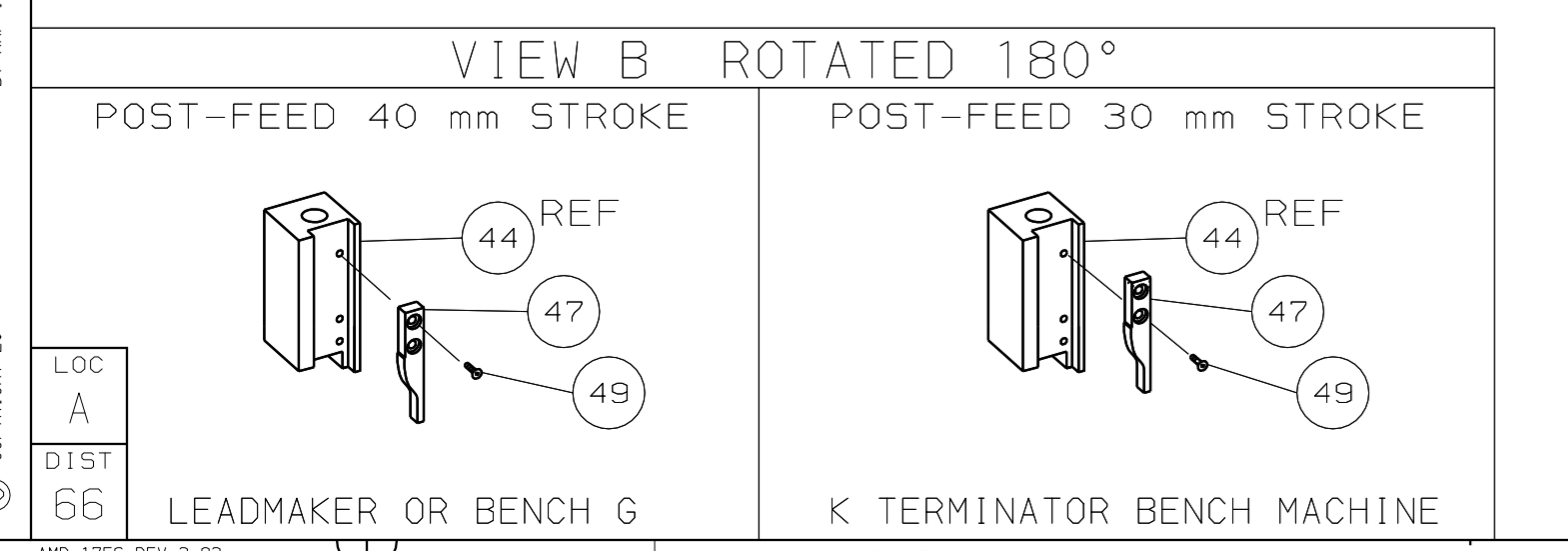
TERMINAL	-	-	FEED
APPL SPEC	NONE	-	21.40 [.843 IN]

TERMINALS APPLIED

AMP PN	MFR PN	-	-	-
1572821-1	4323.00	-	-	-
1572821-2	4323.02	-	-	-
1572821-3	4323.30	-	-	-
1572821-4	4323.32	-	-	-

WIRE SIZE	CRIMP HEIGHT	PIN PN AND LENGTH [IN]
mm ² AWG		
1.00mm ²	1.60 ±0.05 [.063 ±.002 IN]	354779-3 [.3005]
0.75mm ²	1.50 ±0.05 [.059 ±.002 IN]	1-354779-1 [.3045]
0.50mm ²	1.45 ±0.05 [.057 ±.002 IN]	1-354779-5 [.3065]

-  RECOMMENDED SPARE PARTS.
- 2. GREASE RAM, CAM, CAM FOLLOWER AND FEED ROD LIGHTLY.
- 3. LUBRICATE DAILY PER THE APPLICATOR INSTRUCTION SHEET SUPPLIED WITH THE APPLICATOR.
-  CUT TO LENGTH AT ASSEMBLY.
-  ALL CRIMP DATA CALCULATED BY TYCO ELECTRONICS UK LTD.



QTY	REQD	PER ASSY	PART NO	DESCRIPTION	ITEM NO
-	1	1	1490525-1	DEPRESSOR, WIRE	73
-	1	1	1339782	PRINT, APPLICATOR LOG SHEET	72
-	1	1	1338705-2	DOCUMENTATION PACKAGE	71
-	3	3	2-23147-2	SPRING, DEPRESSOR	70
-	1	1	1490524-2	SPACER, DEPRESSOR	68
-	1	1	461264-1	PLATE, IDENTIFICATION	67
-	2	2	21017-2	SCR,DRIVE (#2X.19) ID PLATE	66
-	1	1	1424350-1	HOLDER, PIN, WIRED	65
-	1	1	986950-1	WASHER, FLAT PRECISION	64
-	1	1	3-18031-0	SCR,SKT SET (M6X6) RAM	63
-	1	1	18023-9	SCR,SKT CAP (M4X6) CP DSC	62
-	1	1	18024-7	SCR,BHC (M4X10) ANVIL	60
-	2	2	1-18023-3	SCR,SHC (M4X16) HOLD DOWN	58
-	5	5	18023-9	SCR,SHC (M4X6) STRIP GUIDE	57
-	2	2	9-18023-6	SCR,SHC (M4X14) SLUG BLADE	56
-	2	2	18029-1	NUT, HEX (M3) DRAG	54
-	2	2	986965-1	NUT, HEX SL (M4) DRAG STUD	53
-	2	2	2-18032-2	SCR,SKT SET (M3X10) DRAG	52
-	1	1	18024-3	SCR,BHC (M3X10) CAM	49
-	1	1	1338676-1	CAM, POST-FEED 30 & 40 mm ST	47
-	1	1	1338662-1	APPLICATOR, BASIC (SUBASSY)	46
-	1	1	690191-1	PLUG, NYLON	45
-	1	1	1320998-1	RAM	44
-	1	1	690125-1	WASHER, LAMINATED	43
-	1	1	690124-1	WASHER, RAM	42
-	1	1	2-18024-6	SCREW,BHC (M8X25) CRIMPER	41
-	1	1	23241-1	BALL, STEEL	40
-	1	1	2-22278-7	SPRING, COMPRESSION	39
-	1	1	1320922-1	DISC, INSULATION	38
-	1	1	354777-1	WIRE DISC, PLASTIC	37
-	1	1	22480-5	WASHER, SPRING	36
-	1	1	690212-1	POST, RAM	35
-	9	9	18025-2	WASHER, LOCK (M4) SHEAR BL	32
-	2	2	1-18024-0	SCR,BHC (M4X20) SHEAR PL	31
-	2	2	18024-8	SCR,BHC (M4X12) STRIPPER	29
-	1	1	3-690451-2	SPACER, STRIPPER	28
-	1	1	240639-1	STRIPPER	27
-	2	2	1320906-1	DRAG, STUD	25
-	1	1	1320995-3	PLATE, STRIP GUIDE	24
-	1	1	240825-2	PLATE, STRIP HOLD DOWN	23
-	2	2	4-22281-1	SPRING, DRAG	22
-	1	1	1338665-1	DRAG, STOCK	20
-	2	2	1338663-4	GUIDE, LOWER STRIP	18
-	4	4	1-18024-8	SCR,BHC (M6X12) STRIP GD PL	17
-	1	1	1338708-1	SPACER, SLUG BLADE	16
-	1	1	690481-2	SPACER, HOLD DOWN	13
-	1	1	23846-1	SPRING, HOLD DOWN	12
-	1	1	240833-2	PLATE, REAR SHEAR	11
-	1	1	690482-3	PLATE, FRONT SHEAR	9
-	1	2	2-1333216-4	ANVIL	8
-	1	1	690474-3	BLADE, SLUG	7
-	1	1	2-455892-1	HOLD DOWN, TERMINAL	6
-	1	1	4-240641-1	SPACER, SLUG BLADE	5
-	1	1	238009-1	SPACER, BLOCK CRIMPER	4
-	1	2	8-1213077-2	CRIMPER, INSULATION	3
-	1	1	455888-4	SPACER, CRIMPER	2
-	1	2	1-456405-3	CRIMPER, WIRE	1

REVISION OF EACH ASSY NO (WHEN BLANK, USE DWG REVISION)

QTY REQD PER ASSY	PARTS LIST
	DIMENSIONS: mm [INCHES] MATL - HT TR - FIN -
	DO NOT SCALE PRINT.
	TOLERANCES UNLESS OTHERWISE SPECIFIED:
	1 PLC DEC ±
	2 PLC DEC ±
	3 PLC DEC ±
	ANGLES ±
	SURF TEXTURE: <input checked="" type="checkbox"/> REMOVE BURRS, BREAK SHARP EDGES RO.38 MAX
	DR 040CT05 APP 040CT05 F.BACKHURST
	L.L.OFTHOUSE REL 03NOV05 L.L.OFTHOUSE
	AMP Tyco Electronics Harrisburg, PA 17105-3808
	NAME END FEED HD-I APPLICATOR MACHINE REF HD-I APPL
	SCALE - DWG NO 1339782 SHEET 1 OF 1 REV B

CAGE CODE 00779 CUSTOMER AND ASSEMBLY DRAWING

THIS DRAWING IS A CONTROLLED DOCUMENT.

LAYOUT L1339778 SET UP GAGE 458638-3

RELEASER FOR PUBLICATION BY AMP INCORPORATED. ALL RIGHTS RESERVED. THIS DRAWING IS UNPUBLISHED. COPYRIGHT 20