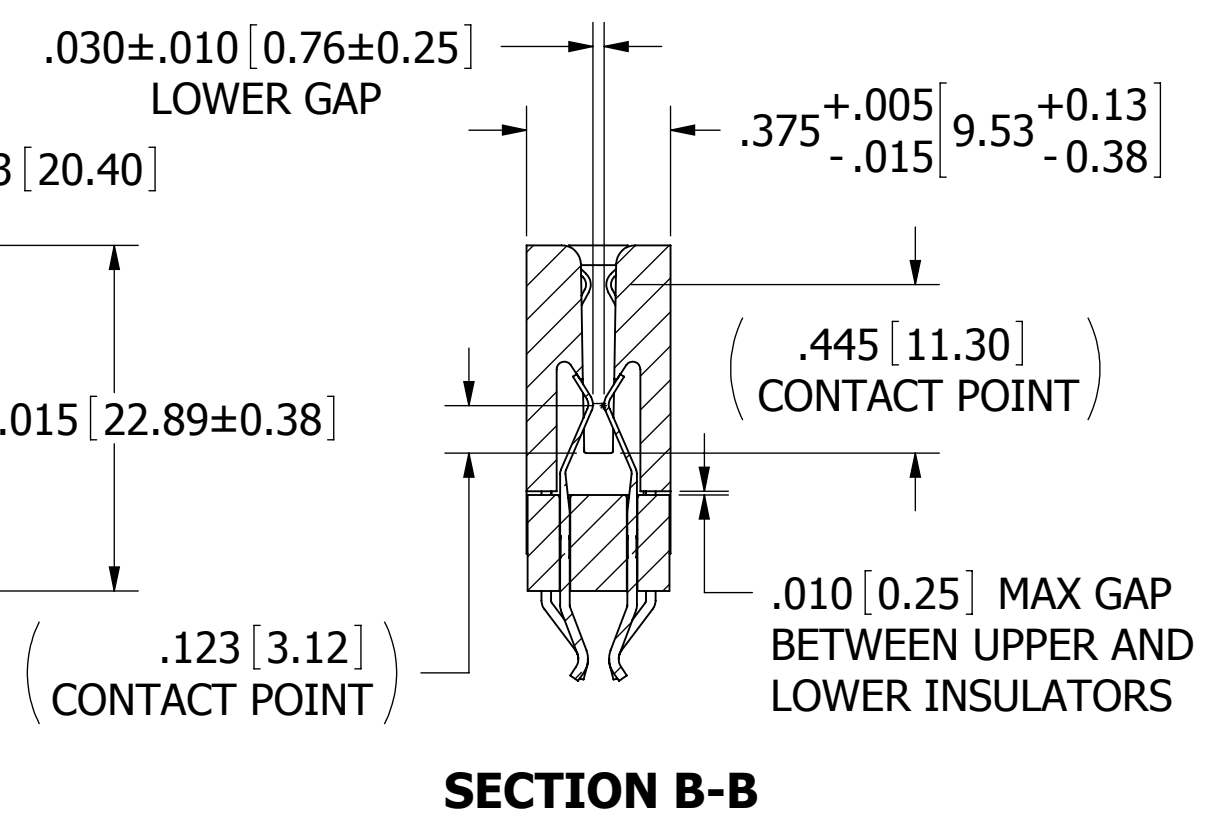
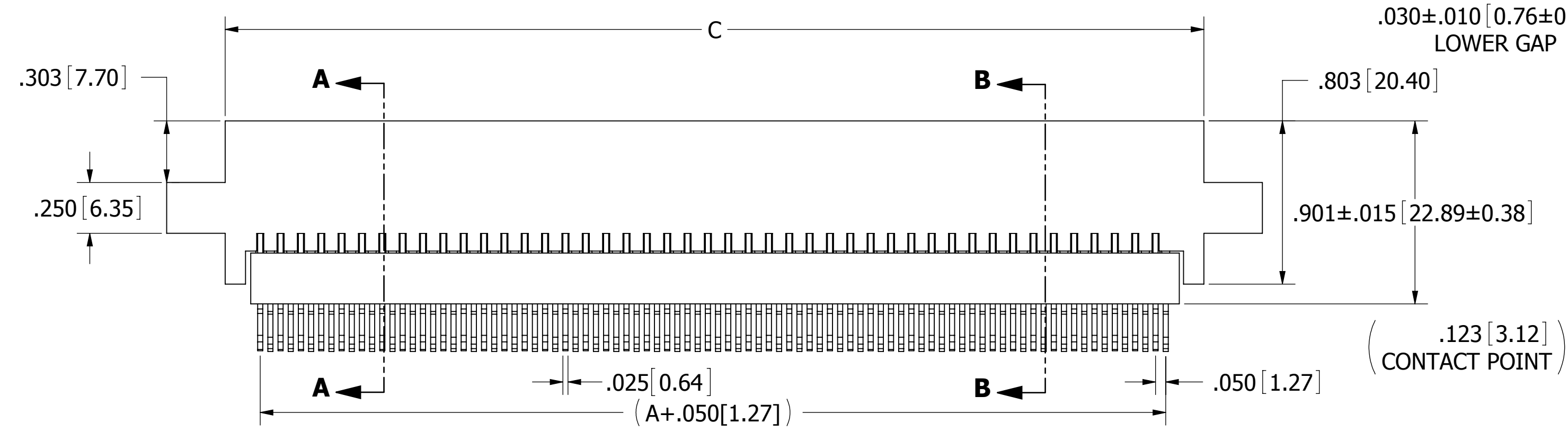
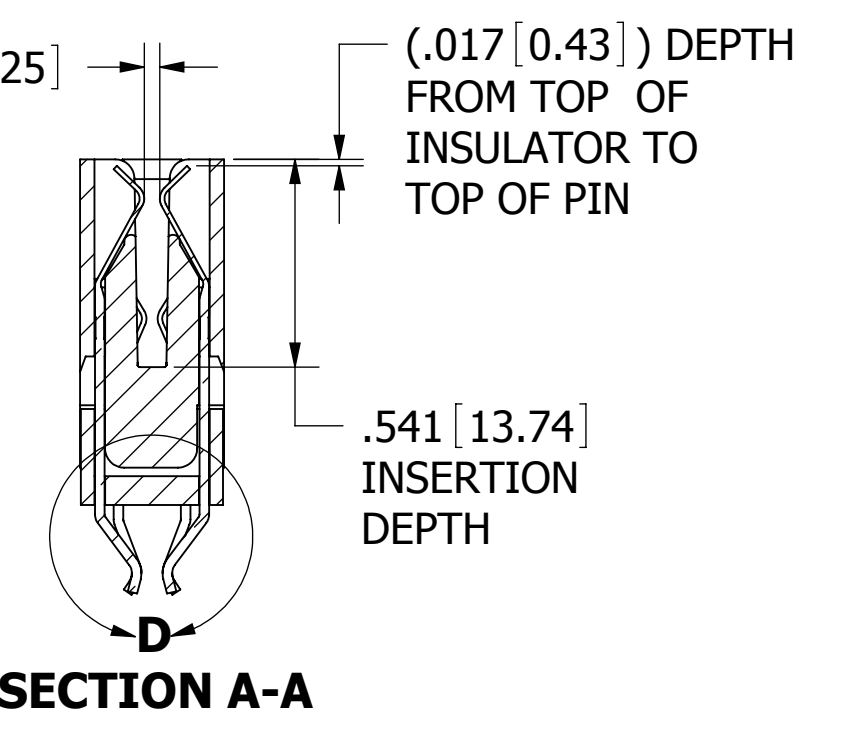
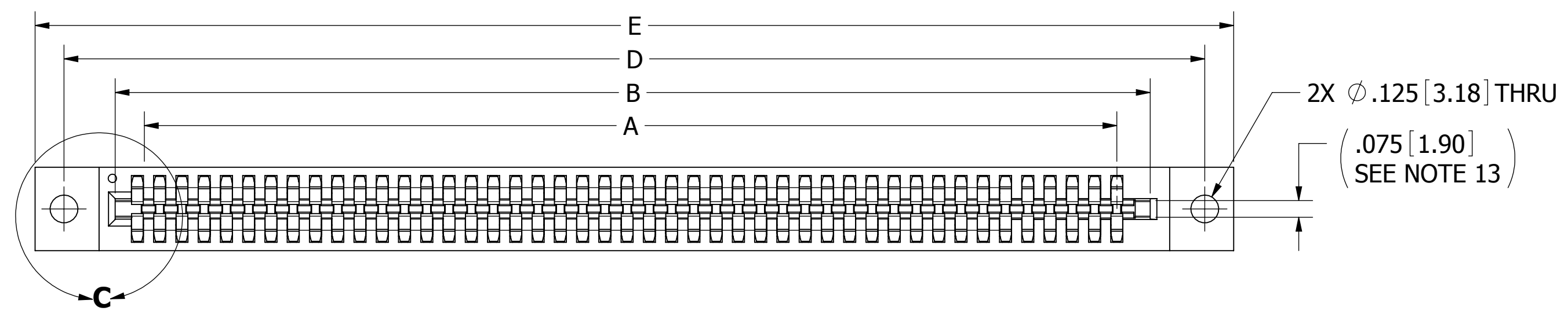
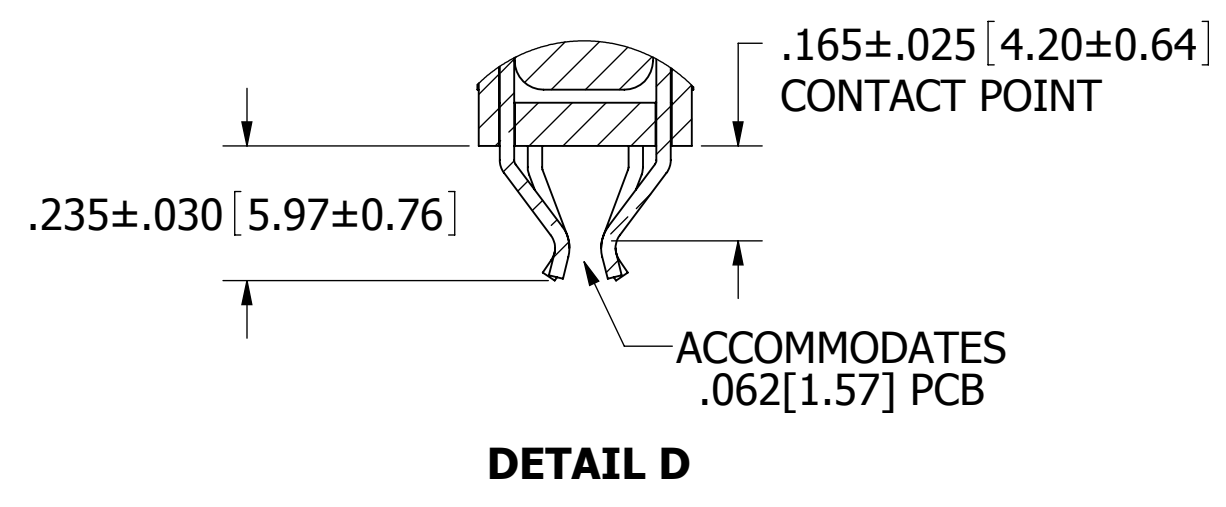
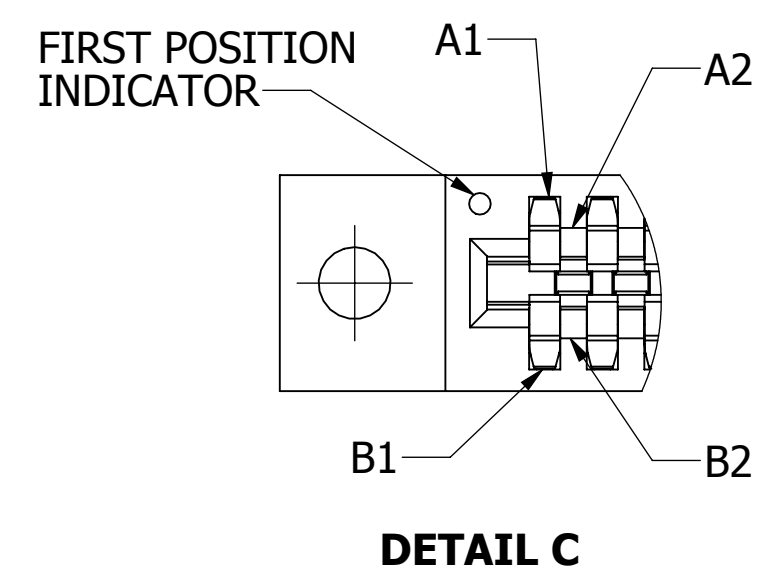
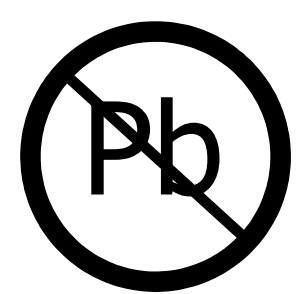


REVISIONS				
REV.	ECO. NO	DESCRIPTION	DATE	BY
A	1096	INITIAL RELEASE	3/19/2008	VJ
B	1829	UPDATE NOTES AND FORMAT	10/24/2008	ASK
C	1864	ADD D, T, V, AND Z MTG, REMOVE A AND R MATERIAL OPTIONS	12/2/2008	MNH
D	1866	SHOW FIRST POSITION INDICATOR, ADD VOLATAFE DROP NOTE.	12/4/2008	MNH
E	2475	ADDED POSITION # TO 120, DIM A+.050 TO PCB LAYOUT, UPDATED DIM A (WAS A1 & A2), NOTES FOR INSPECTION, CONTACT GAP .030 ± .010, INSERTION FORCE 8 OZ MAX, CONTACT LOCATION NOTE (DETAIL C), PROCESSING TIME 20 SEC FOR 'G' & 'J' MTL	10/20/2011	JH
F	2851	REMOVE 'D', 'V', 'Z', 'T' MOUNTING OPTIONS	4/3/2014	JHSU



- NOTES:**
- INSULATOR MATERIAL: SEE PART NUMBER CODING.
  - CONTACT MATERIAL: SEE PART NUMBER CODING.
  - PLATING: SEE PART NUMBER CODING.
  - OPERATING TEMPERATURE: SEE PART NUMBER CODING.
  - PROCESSING TEMP: SEE PART NUMBER CODING.
  - UL FLAMMABILITY RATING: 94V-0.
  - VOLTAGE RATING: 225 VAC MINIMUM AT SEA LEVEL.
  - CURRENT RATING: 3 AMP PER CONTACT.
  - CONTACT RESISTANCE: 30 MILLI OHMS MAX.
  - INSULATION RESISTANCE: 5000 MEGA OHMS.
  - DURABILITY: 500 CYCLES MIN.
  - CONNECTOR IDENTIFICATION: THE PART SHALL BE MARKED WITH A PART NUMBER AND LOT CODE.
  - BOARD THICKNESS ACCOMMODATED: .062 ± .008 [1.57 ± 0.20].
  - INSERTION FORCE: 8 OZ MAX PER CONTACT PAIR WHEN USING A .062 [1.57] TEST BLADE.
  - WITHDRAWAL FORCE: 1 OZ MIN PER CONTACT PAIR USING .062 [1.57] PCB.



**RoHS COMPLIANT**

**CUSTOMER COPY**

UNLESS OTHERWISE SPECIFIED: DIMENSIONS ARE IN INCHES [MM]	DRAWN	DATE	NAME	
		12/4/2008	MNH	
TOLERANCES: ANGULAR: ± 1°  DECIMALS .XX=± .02 [.5] .XXX=± .005 [.13] .XXXX=± .0005 [.013]	<small>THE INFORMATION HEREIN CONTAINS PROPRIETARY INFORMATION OF SULLINS ELECTRONICS AND IS NOT TO BE REPRODUCED, USED OR DISCLOSED TO OTHERS FOR ANY PURPOSE EXCEPT AS SPECIFICALLY AUTHORIZED IN WRITING BY AN OFFICER OF SULLINS ELECTRONICS.</small>			TITLE
				BI-LEVEL, .050 CC
PART NUMBER				<b>---B---DLR---</b>
SIZE	CAGE CODE	DWG. NO.	REV	
C	54453	C10790	F	
SCALE: 2:1		SHEET 1 OF 4		

# PART NUMBER CODING

## MATERIALS (INSULATOR / CONTACT)

**G = PA9T / PHOSPHOR BRONZE**

OPERATING TEMP: -65°C TO +125°C

PROCESSING TEMP: 260°C MAX FOR 20 SECS

**J = PA9T / BERYLLIUM COPPER**

OPERATING TEMP: -65°C TO +150°C

PROCESSING TEMP: 260°C MAX FOR 20 SECS

(CONSULT FACTORY FOR OTHER MATERIALS)

## MOUNTING STYLE

H =  $\phi$ .125[3.18] MOUNTING HOLES (PAGE 1)

S =  $\phi$ .125[3.18] SIDE MOUNTING HOLES (PAGE 2)

I = #4-40 THREADED INSERTS (PAGE 2)

A = #4-40 THREADED INSERTS IN SIDE HOLES (PAGE 2)

N = NO MOUNTING EARS (PAGE 2)

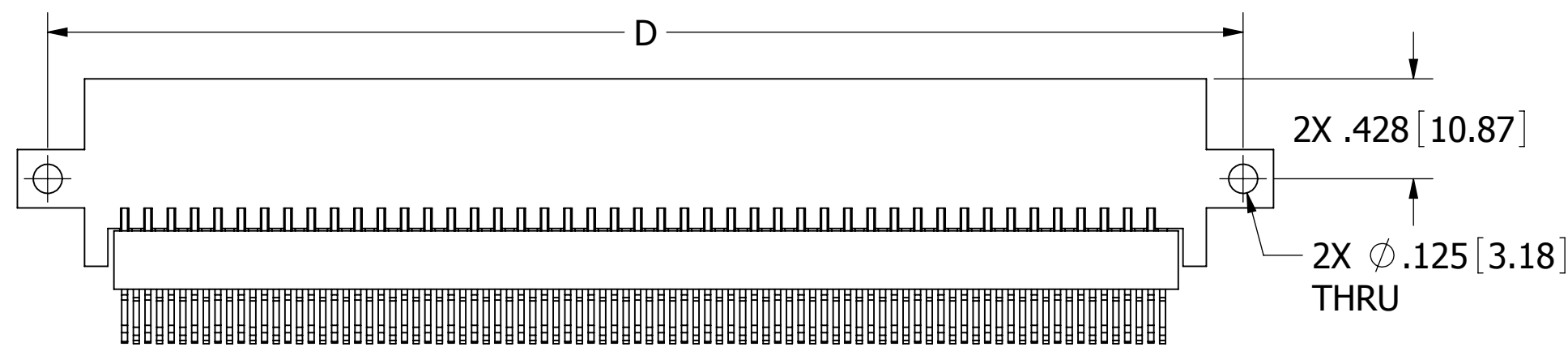
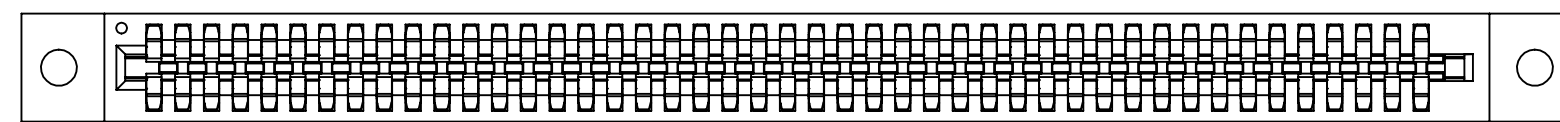
## NUMBER OF POSITIONS

(CONTACT PER ROW)

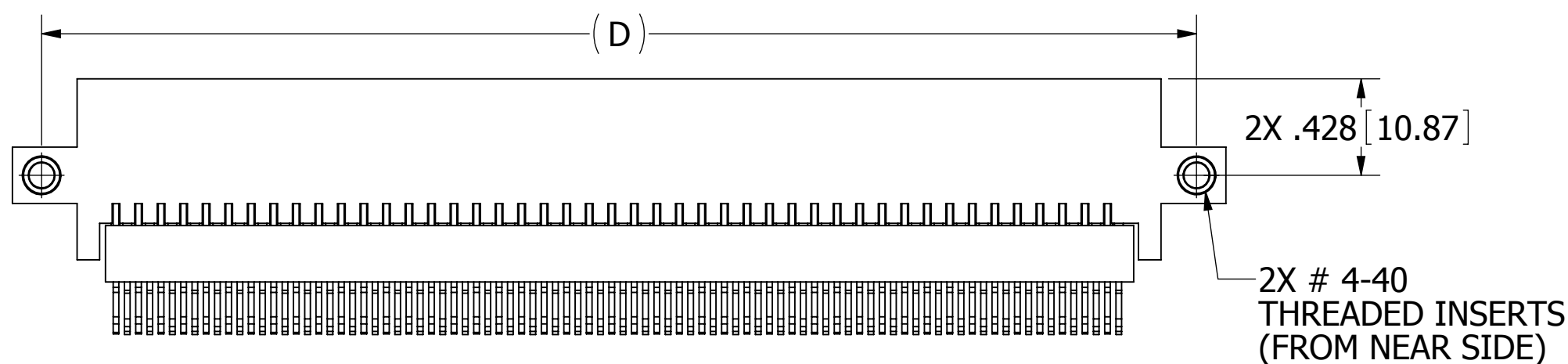
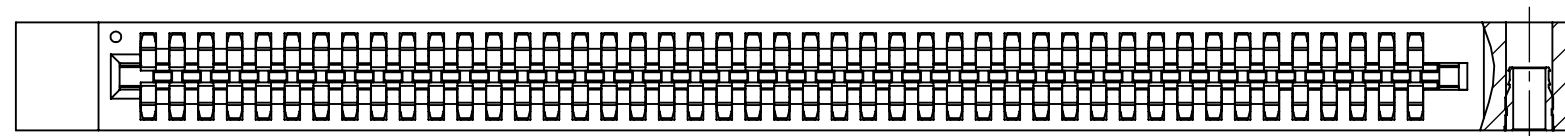
## PLATING

ALL PLATINGS ARE LEAD FREE AND HAVE .000050" NICKEL UNDERPLATE

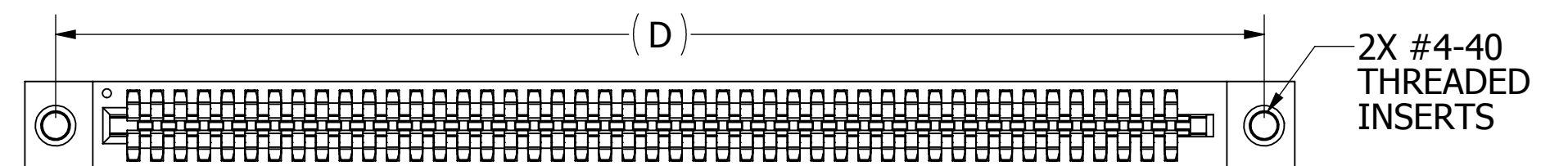
	CONTACT SURFACE	TERMINATION
Y =	.000030" GOLD	.000005" GOLD
B =	.000010" GOLD	.000100" PURE TIN, MATTE
C =	.000030" GOLD	.000100" PURE TIN, MATTE



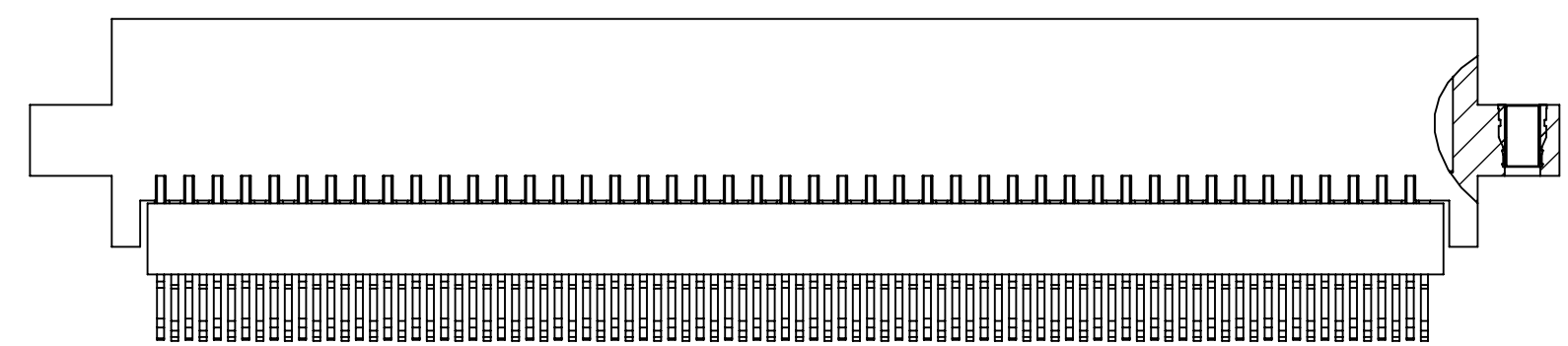
**--B--DLRS**



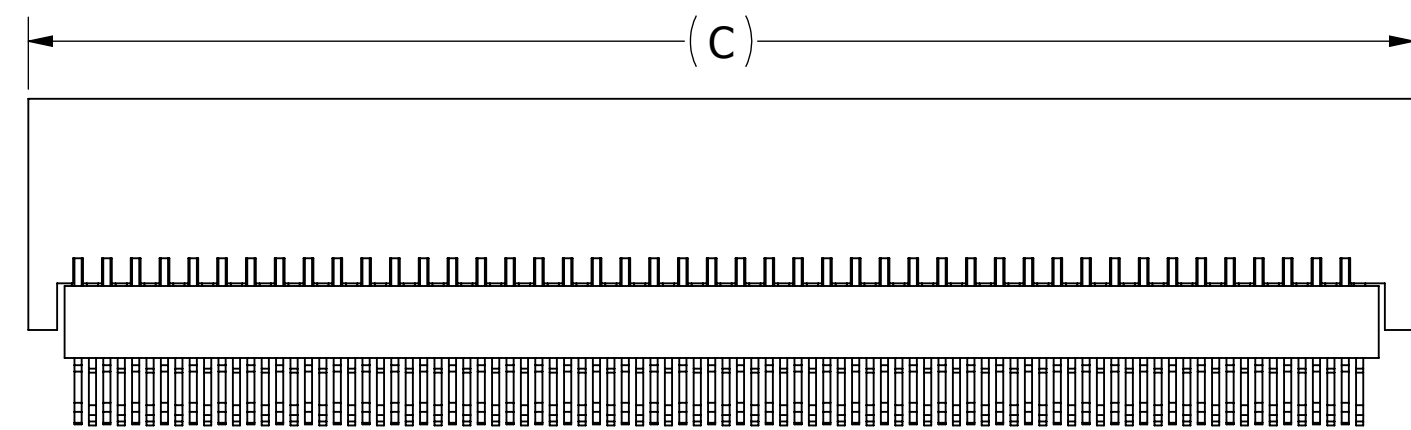
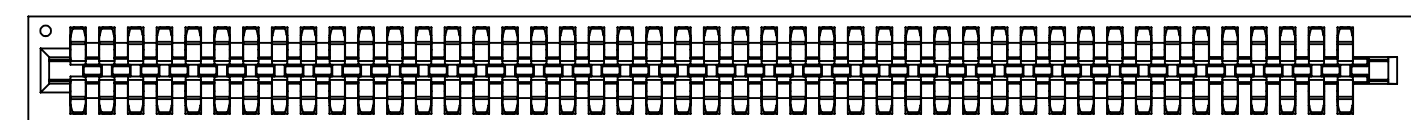
**--B--DLRA**



2X #4-40  
THREADED  
INSERTS

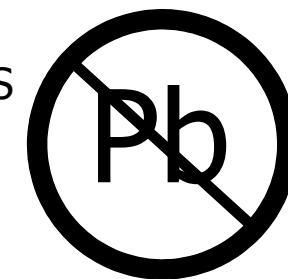


**--B--DLRI**



**--B--DLRN**

# CUSTOMER COPY



RoHS COMPLIANT

UNLESS OTHERWISE SPECIFIED:  
DIMENSIONS ARE IN INCHES [MM]

### TOLERANCES:

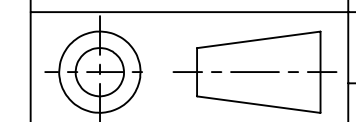
ANGULAR:  $\pm 1^\circ$

### DECIMALS

.XX =  $\pm .02$  [.5]  
.XXX =  $\pm .005$  [.13]  
.XXXX =  $\pm .0005$  [.013]

DRAWN	DATE	NAME
	12/4/2008	MNH

THE INFORMATION HEREIN CONTAINS  
PROPRIETARY INFORMATION OF  
SULLINS ELECTRONICS AND IS NOT  
TO BE REPRODUCED, USED OR  
DISCLOSED TO OTHERS FOR ANY  
PURPOSE EXCEPT AS SPECIFICALLY  
AUTHORIZED IN WRITING BY AN  
OFFICER OF SULLINS ELECTRONICS.

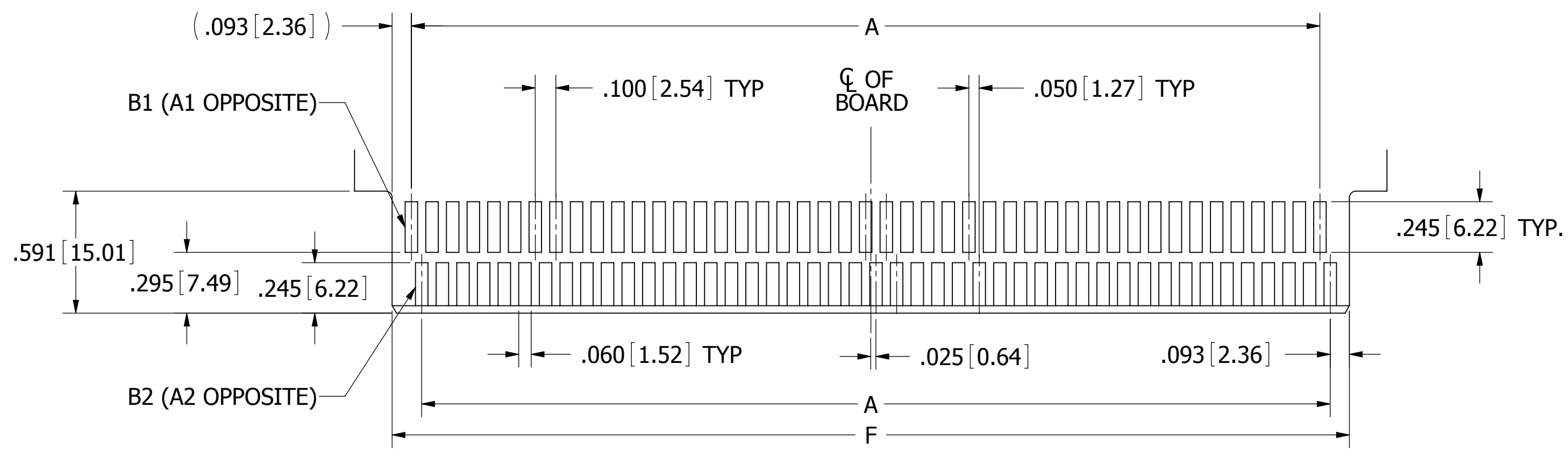


TITLE  
**BI-LEVEL, .050 CC**

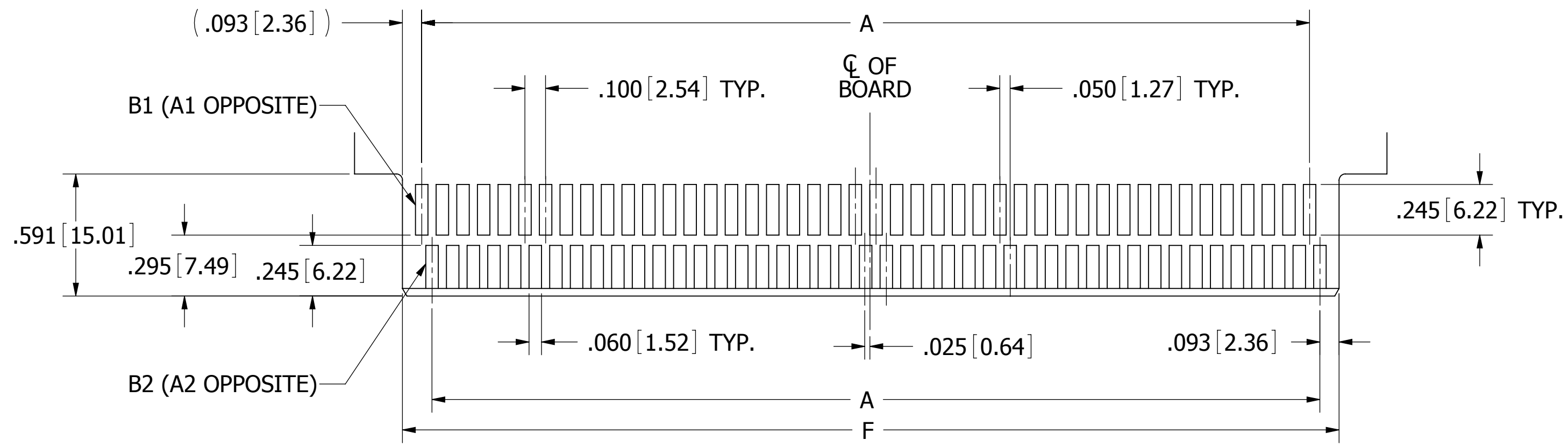
PART NUMBER  
**--B--DLR--**

SIZE <b>C</b>	CAGE CODE <b>54453</b>	DWG. NO. <b>C10790</b>	REV <b>F</b>
------------------	---------------------------	---------------------------	-----------------

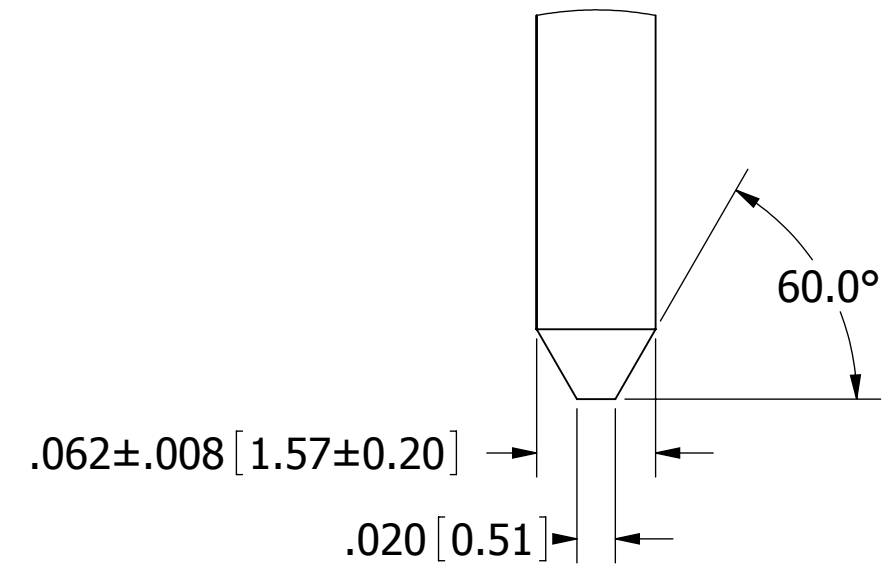
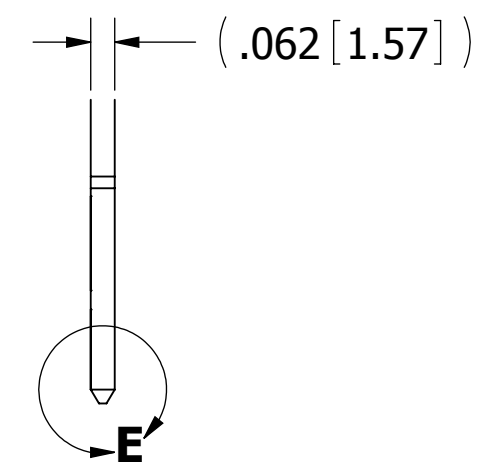
SCALE: 1.5:1 SHEET 2 OF 4



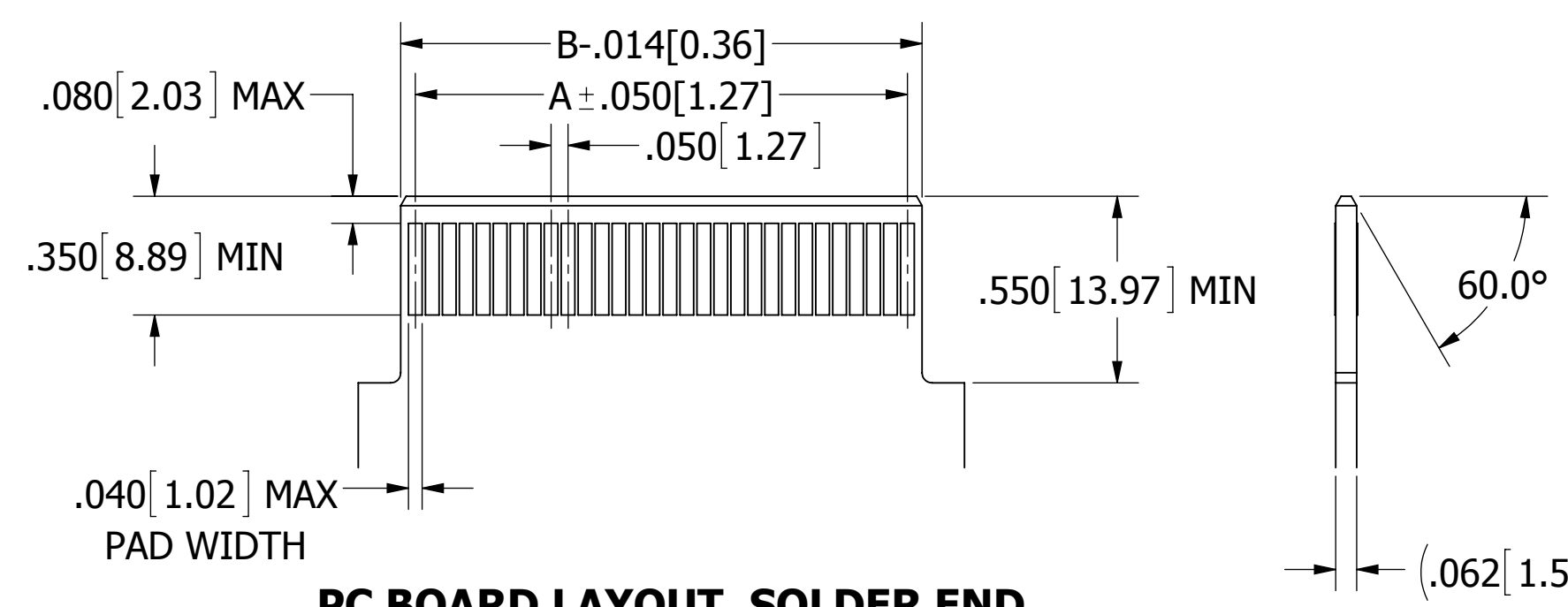
DAUGHTER CARD LAYOUT NUMBER 1  
90 POSITION SHOWN  
REFER TO PAGE 4 TO DETERMINE LAYOUT TO USE



DAUGHTER CARD LAYOUT NUMBER 2  
88 POSITION SHOWN  
REFER TO PAGE 4 TO DETERMINE LAYOUT TO USE



DETAIL E



PC BOARD LAYOUT, SOLDER END



**CUSTOMER COPY**

UNLESS OTHERWISE SPECIFIED: DIMENSIONS ARE IN INCHES [MM]		DRAWN	DATE	NAME	
			12/4/2008	MNH	
TOLERANCES: ANGULAR: ± 1° DECIMALS .XX = ± .02 [.5] .XXX = ± .005 [.13] .XXXX = ± .0005 [.013]					<small>THE INFORMATION HEREIN CONTAINS PROPRIETARY INFORMATION OF SULLINS ELECTRONICS AND IS NOT TO BE REPRODUCED, USED OR DISCLOSED TO OTHERS FOR ANY PURPOSE EXCEPT AS SPECIFICALLY AUTHORIZED IN WRITING BY AN OFFICER OF SULLINS ELECTRONICS.</small>
					TITLE BI-LEVEL, .050 CC
					PART NUMBER __B__DLR__
SIZE C	CAGE CODE 54453	DWG. NO. C10790	REV F		
SCALE: 2:1					SHEET 3 OF 4

