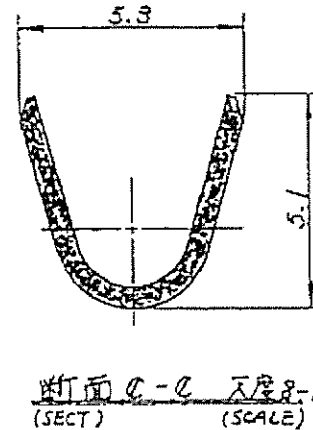
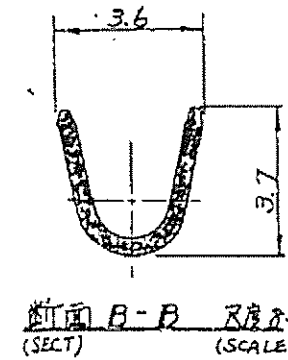
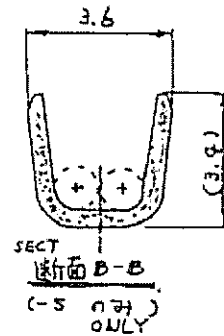
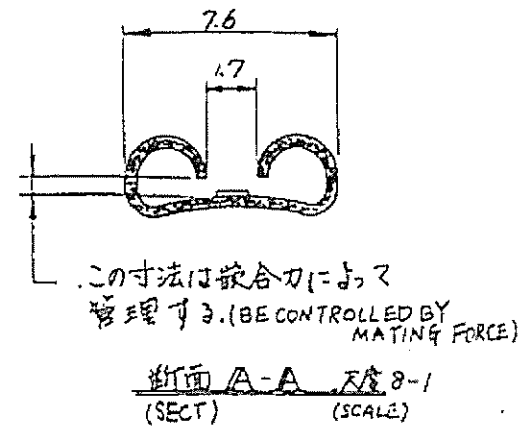
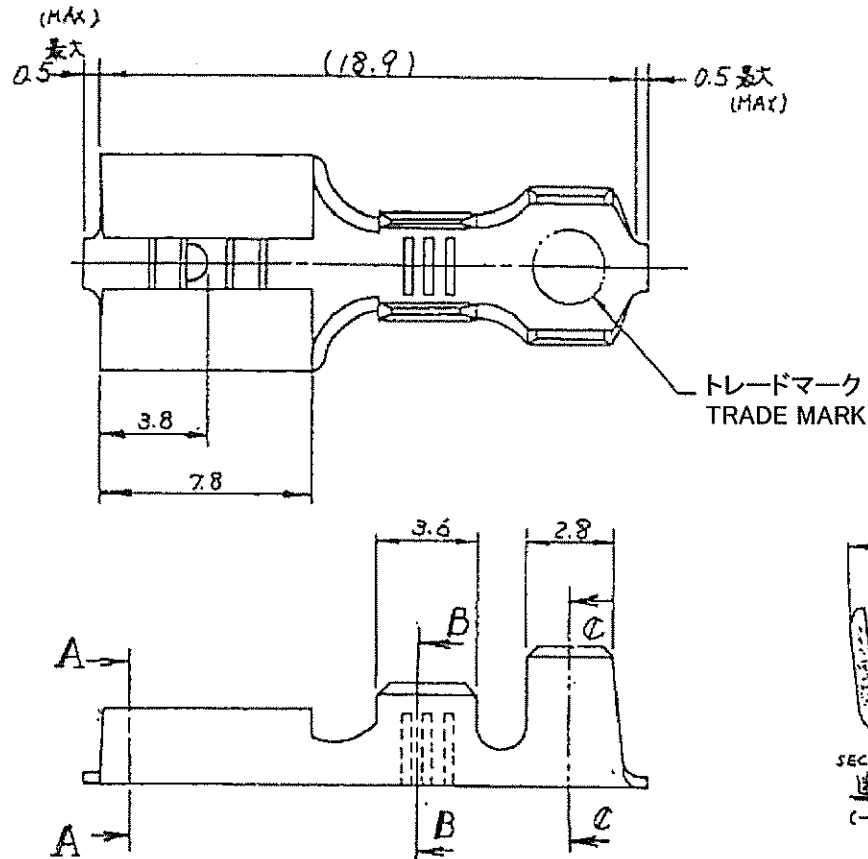


LOC		DIST		REVISIONS				
P	LTR	DESCRIPTION	ECN	DATE	OWN	APVD		
		D1		REVISED PER ECO-11-005030	22MAR11	RK	HMR	



- 注: 1 嵌合するタブの詳細については CP-63-048J の断面を参照のこと
2 製品規格番号 108-5006
△ ストレス除去処理
処理法により外観が変わります。
不活性ガス加熱方式 無光沢
大気加熱方式 光沢

型式 (P/N)	材質 (MATERIAL)	仕上 (FINISH)
170213-5	黄銅 (BRASS)	錫めっき (TIN PL)
170213-1	黄銅 (BRASS)	— △
170213-2	黄銅 (BRASS)	錫めっき (TIN PL)
170213-3	焼青銅 (PRE-TIN BRASS)	錫めっき (TIN PL)
OBSELETE 170213-4	焼青銅 (PRE-TIN BRASS)	— △

- NOTES: 1. SEE DRAWING OF CP-63-048J FOR THE DETAIL OF MATING TAB.
2. PRODUCT SPEC: 108-5006
△ STRESS RELIEVING

FINISH IS SUBJECT TO CHANGE BY THE TYPE OF STRESS RELIEVING PROCESS
INERT GAS FURNACE MATTE
ATMOSPHERIC FURNACE FOLLOWED BY ACID PICKLE BRIGHT

DIMENSIONS * 0.25 mm		TOLERANCES UNLESS OTHERWISE SPECIFIED — 公差 10% ±0.2 30% ±0.25 50% ±0.3 100% ±0.3 ±0.4 ±1.0		DWN T. Notario 16 JUL '96 CHK M. Suzuki 18 JUL '96 APP (Signature) 18 JUL '96 PRODUCT SPEC 108-5006 APPLICATION SPEC 114-5084 WEIGHT —		WIRE RANGE 社会電線規格 0.75~2.27 mm ² (AWG 18-14)		INSULATION DIA 線径外径 2.54~4.32 mm	
MATERIAL 参照 (SEE TABLE)				FINISH 仕上 参照 (SEE TABLE)		TE Connectivity (250" SERIES FASTON RECEPTACLE) "250" シリーズ ファストン リセプタクル SIZE A3 CAGE CODE 00779 DRAWING NO. ©-170213			
CUSTOMER DRAWING									