
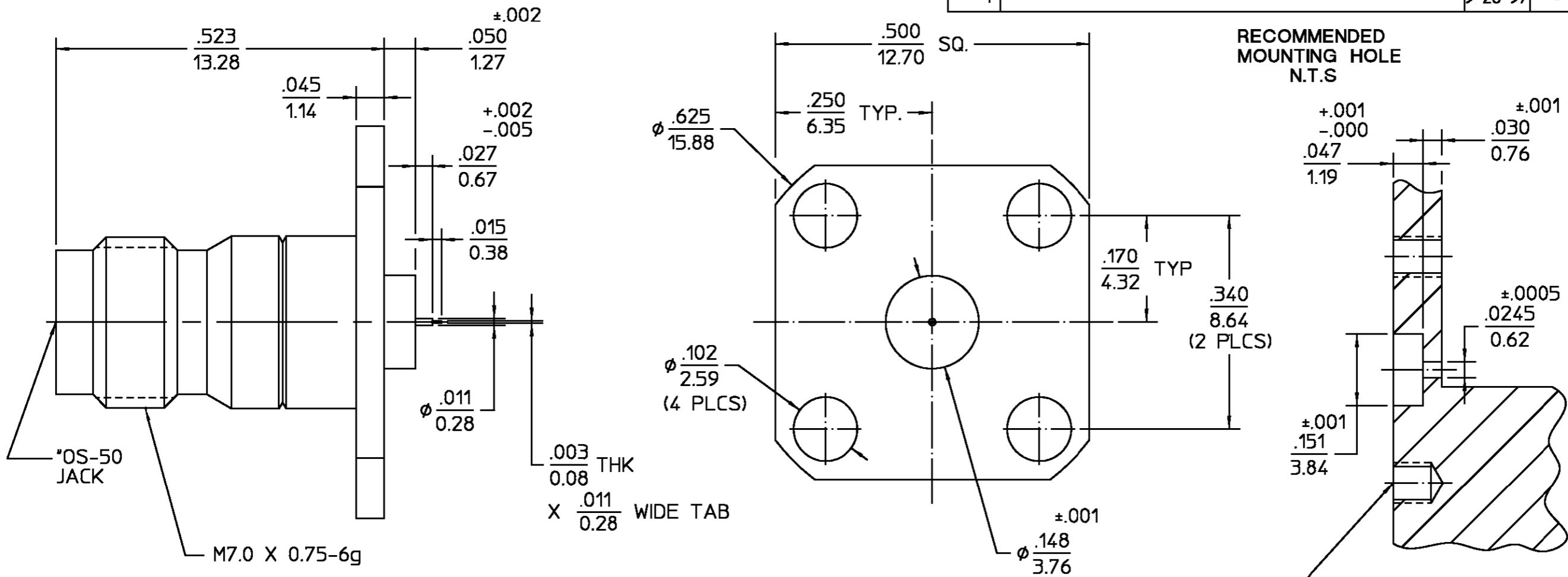


REVISIONS			
REV	DESCRIPTION	DATE	APPROVED
01 ₁	REVISED	KYLE 9-26-97	 10/21/97



RECOMMENDED LAUNCH GEOMETRY

SUBSTRATE	.010 / .015
LINE SIZE	.012 / .018

.XXX = in
XX.X = mm (REF)

HOUSING BUSHING	STAINLESS STEEL PER ASTM-A484 AND ASTM-A582, TYPE 303	PASSIVATE PER QQ-P-35	UNLESS OTHERWISE SPECIFIED DIMENSIONS ARE IN INCHES FRAC. DEC. ANGLES ± 1/64 ±.005 ± 1°	DRAWN BY S.M DATE 8-15-88	AMP Incorporated 140 Fourth Avenue Waltham, MA 02451-7599
DIELECTRIC	PTFE FLUOROCARBON PER ASTM-D-1457	N/A		CHECKED BY DAC DATE 6-19-90	
CENTER CONTACT	BERYLLIUM COPPER PER ASTM-B-196 OR ASTM-B-197, ALLOY C17300, CONDITION H	GOLD PLATE PER MIL-G-45204	These drawings and specifications are the property of M/A COM Interconnect Div. and shall not be reproduced or copied or used in whole or in part as the basis for the manufacture or sale of item(s) without written permission.	APPD BY SR DATE 6-19-90	TITLE "OS-50" JACK 4 HOLE FLANGE MOUNT TO MICROSTRIP
COMPONENT	MATERIAL	FINISH		USE ASSY PROCEDURE NO. A.P. N/A	
					SCALE 6:1 SHEET 1 OF 1