

C. Westub 5-21-98
 APPROVED BY/DATE
 REV 6

SAFETY ORGANIZATION(S)

THIS FILTER HAS BEEN FORMALLY RECOGNIZED, CERTIFIED OR APPROVED BY THE LISTED AGENCY. THEREFORE, ALL TEST/REQUIREMENTS SPECIFIED IN THE LATEST REVISION OF THE FOLLOWING AGENCY STANDARDS HAVE BEEN MET.

UL RECOGNIZED
 CSA CERTIFIED
 VDE APPROVED
 SEV APPROVED

UL 1283
 CSA 22.2, NO. 0.0.4.8
 VDE 565-3
 SEV 1055/TP1977/5.1.1

OPERATING SPECIFICATIONS:

LINE VOLTAGE/CURRENT:
 6 AMP., 120/250 VAC
 5 AMP./40°C, 250 VAC
 40°C
 .25mA at 120V 60 Hz
 .48 mA at 250V 50 Hz
 -10°C TO +40°C RATED CURRENT, I_r

IN AN AMBIENT, T_a, HIGHER THAN 40°C, THE MAXIMUM OPERATING CURRENT, I_o, IS AS FOLLOWS:

$$I_o = I_r \sqrt{\frac{85 - T_a}{45}}$$

RELIABILITY SPECIFICATIONS:

STORAGE TEMPERATURE:
 -40°C TO +85°C
 HUMIDITY:
 21 DAYS @ 40°C 95% RH
 CURRENT OVERLOAD TEST:
 6 TIMES RATED CURRENT FOR 8 SECONDS

TEST SPECIFICATIONS:
 INDUCTANCE:
 7.8 mH NOMINAL
 CAPACITANCE, MEASURED @ 1 KHz, 0.25 VAC MAX., 25°C ±1°C
 .005µF ±20%
 .54µF ±20%
 DISCHARGE RESISTOR
 330 KΩ
 5000 MΩ (MIN) AT 100 VDC
 20°C AND 50% RH

RECOMMENDED RECEIVING INSPECTION HIPOT:

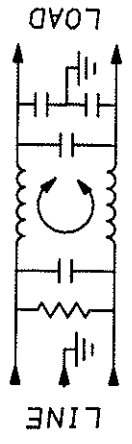
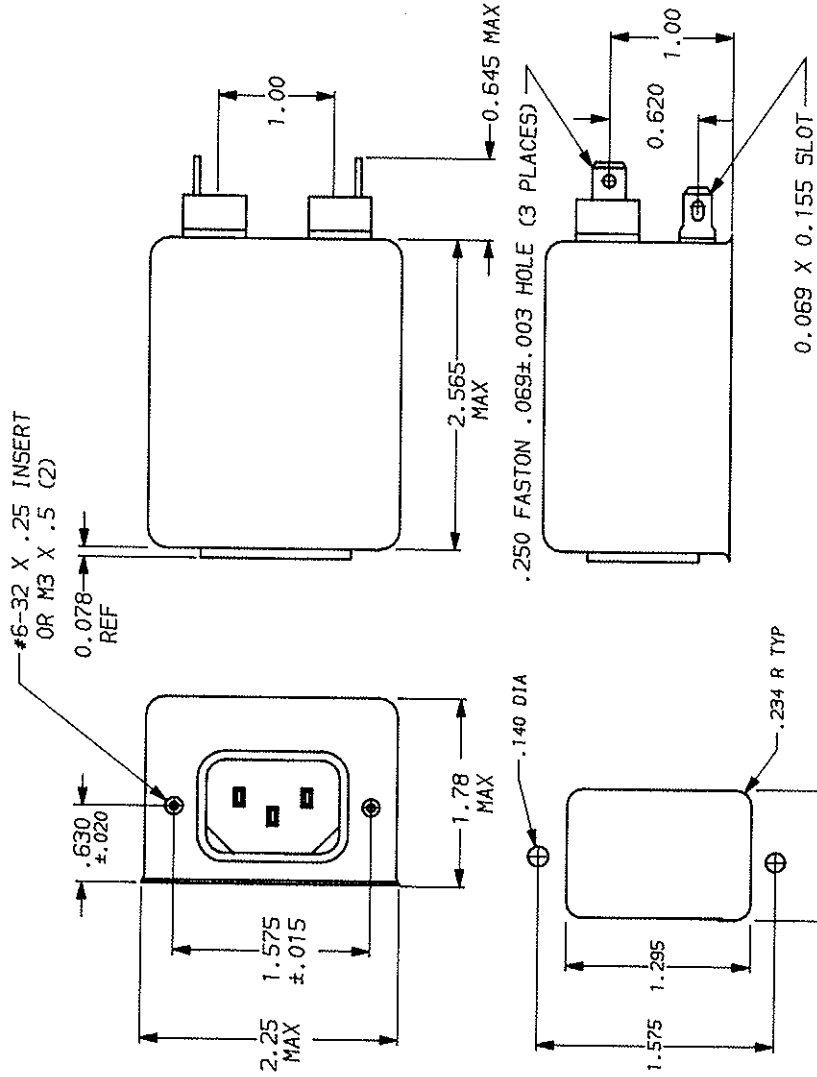
2250 VDC FOR 1 MINUTE
 1450 VDC FOR 1 MINUTE
 FILTER APPROVAL:
 THE BEST WAY TO SELECT AND QUALIFY A FILTER IS FOR YOUR ENGINEERING TO TEST THE UNIT IN YOUR EQUIPMENT.

TOLERANCE EXCEPT AS NOTED

DECIMAL: .XXX .XX .X ANGLES ±1°
 ENGLISH: ±.025
 METRIC: ±

MATERIAL: AS SUPPLIED

FINISH: AS SUPPLIED



FREQUENCY MHZ	.01	.02	.05	.1	.15	.5	1	5	10	20	30
COMMON	7	13	21	29	30	33	42	42	42	36	27
DIFF. dB	1	1	2	3	10	25	59	62	40	40	40

50Ω - 50Ω (MINIMUM) INSERTION LOSS
 This document is proprietary to CORCOM, INC. and is not to be reproduced nor used for manufacturing purposes except on CORCOM's order or prior written consent.



LIBERTYVILLE, IL 60048

POWER LINE FILTER

DATE 9-12-89
 REV. NO. 6ESK7 -- 6ESK7M 6
 TDL CW