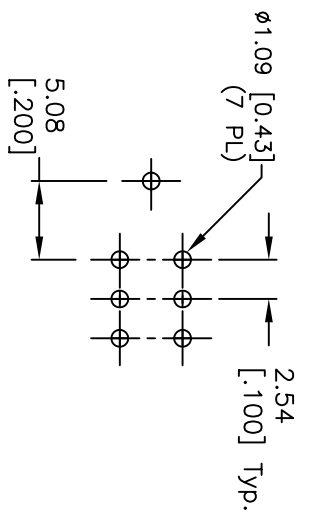
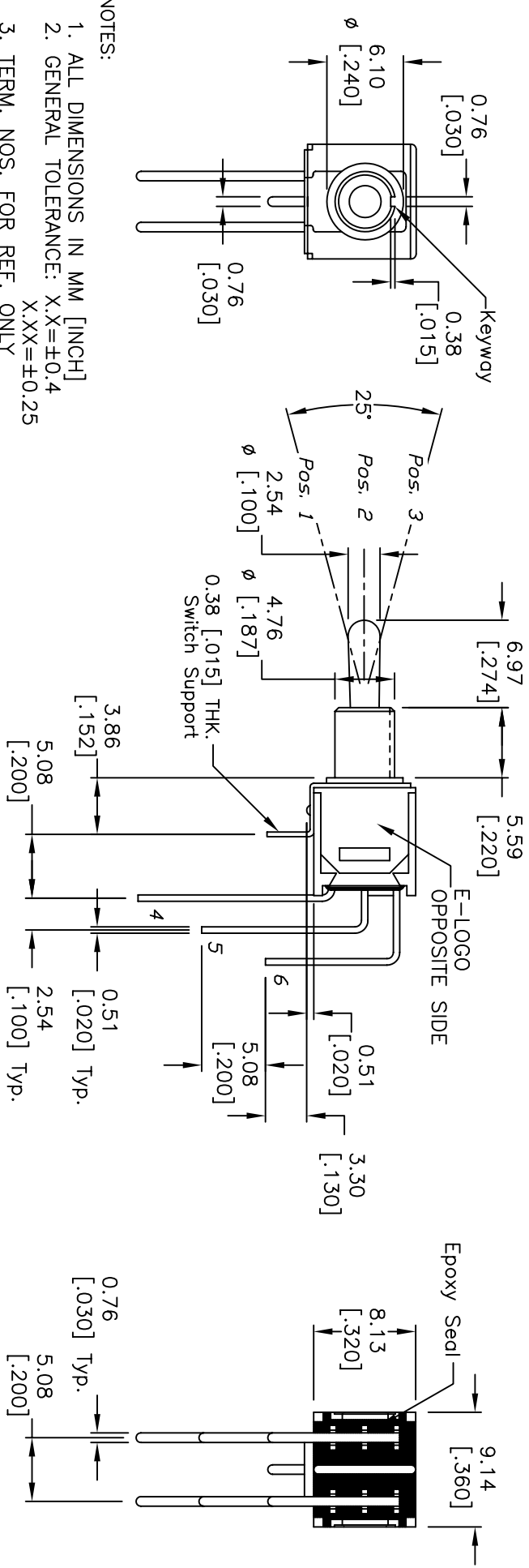


CIRCUIT: DPDT
CONTACT CONFIGURATION

SWITCH FUNCTION		
POS. 1	POS. 2	POS. 3
DN	DNF	DN
2-3,5-6	OPEN	2-1,5-4



RECOMMENDED P.C.B. LAYOUT

NOTES:

1. ALL DIMENSIONS IN MM [INCH]
2. GENERAL TOLERANCE: X.X=±0.4
X.XX=±0.25
3. TERM. NOS. FOR REF. ONLY
4. RATING: 0.4V @20V AC or DC
5. FIXED TERM. MOVING CONTACT:
Copper Alloy w/GOLD plating over
Nickel plate.
6. ELECTRICAL LIFE: 30,000 make-and-break cycle
at full load.
7. DIELECTRIC STRENGTH: 1,000 V RMS @sea level.
8. OPERATING TEMP.: -30°C to 85°C

REV.	ECN No.	DESCRIPTION	DATE	CHKD
C	16058	EDIT ACTUATOR LENGTH	5/30/06	CT
B	12141	RELEASED FOR PRODUCTION	5/1/02	CJB

E-SWITCH®

TITLE: 200 MDP-3 T3 B4 M7 R E (GOLD CONTACTS)

SCALE: 2:1 DATE: 5/1/02 DR: CJB DWG: T221008 REV: C

THE INFORMATION CONTAINED IN THIS DOCUMENT IS PROPRIETARY TO E-SWITCH AND IS NOT TO BE COPIED OR TRANSFERRED