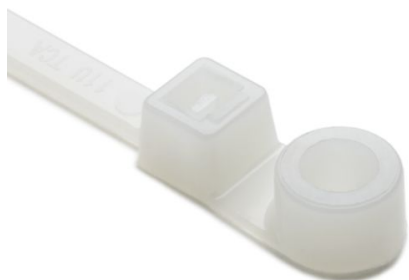


Specification Sheet

Part Number: T50ML9C2



Screw-Mount Cable Tie, 15.4" Long, #10 Screw, 4.0" Max Bundle Dia, 50lb, PA66, Natural, 100/pkg

Article Number	113-05419
Type	T50ML
Color	Natural (NA)
Features & Benefits	<ul style="list-style-type: none">•Screw mount style creates low insertion and high extraction force.•Choose from several tensile strengths and lengths to accommodate a range of applications.
Quantity Per	bag
Product Description	One-piece Screw Mount Cable Ties fasten with a screw or bolt to provide secure routing of cable bundles. Multiple configurations are available to cover a range of bundle sizes and tensile strengths.
Short Description	Screw-Mount Cable Tie, 15.4" Long, #10 Screw, 4.0" Max Bundle Dia, 50lb, PA66, Natural, 100/pkg

Global Part Name

T50ML-PA66-NA

Minimum Tensile Strength (Imperial)

50.0

Minimum Tensile Strength (Metric)

225.0

Length L (Imperial)

15.4

Length L (Metric)

390.0

Fixation Method

Fixing hole

Identification Plate Position

none

Releasable Closure

No

Tie Closure

plastic pawl

Variant

Inside Serrated

Width W (Imperial)

0.18

Width W (Metric)

4.7

Bundle Diameter Min (Imperial)

0.12

Bundle Diameter Min (Metric)

3.0

Bundle Diameter Max (Imperial)

4.0

Bundle Diameter Max (Metric)

100.0

Thickness T (Imperial)

0.05

Thickness T (Metric)	1.2
Cable Tie Head Length (Imperial)	1.1
Cable Tie Head Width (Imperial)	0.5
Height H (Imperial)	0.23
Height H (Metric)	5.7
Mounting Hole Diameter D (Imperial)	0.22
Mounting Hole Diameter D (Metric)	5.5 mm
Mounting Hole Diameter D Max (Metric)	5.5
Material	Polyamide 6.6 (PA66)
Material Shortcut	PA66
Flammability	UL 94 V2
Operating Temperature (Metric)	-40°F to +221°F (-40°C to +105°C)
Reach Complaint(Article 33)	Yes
ROHS Complaint	Yes
Certification/Specification WEB	UL ANSI/UL 62275 UL ANSI/UL 746B UL ANSI/UL 1565
UL Recognized (US)	Yes

UL Listed (US and Canada)

Yes

UL Recognized (US and Canada)

Yes

Package Quantity(Imperial)

100

Package Quantity (Metric)

100

Customs Number

3926909987

Content Unit(BMEcat)

pcs.

Weight (Metric)

2.9