


LOC		DIST		REVISIONS			
P	LTR	DESCRIPTION	DATE	DMN	APVD		
F		REV PER ECO 13-006669	4-19-13	CT	DM		

- CONNECTOR DIMENSIONS ARE PER ARINC 600 SPECIFICATION.
 - CONNECTOR IS SUPPLIED WITH CONTACTS AS LISTED IN TABLE.
 - KEYING SHOWN IN POSITION "01" FOR ILLUSTRATION ONLY. CONNECTORS SHIPPED WITH KEYING INSTALLED IN POSITION PER TABLE. FOR POSITION "00" KEYING HARDWARE SHIPPED UNASSEMBLED.
- 4 WITH CONTACTS FULLY SEATED TO REAR OF CAVITY.
5 CONTACTS ARE SOLDER COATED WITH Sn60 OR Sn63 SOLDER.
6 DUST COVER INSTALLED FOR SHIPPING.

KEYING POSITION	CONTACTS INCLUDED AND INSTALLED	PART NUMBER
47	MODULE A 1-211431-5 (SIZE 22 POSTED; QTY=150) MODULE B 1-211431-5 (SIZE 22 POSTED; QTY=150) MODULE C 1-211431-5 (SIZE 22 POSTED; QTY=80) 2-448138-7 (SIZE 20 POSTED; QTY=4) 2-448139-6 (SIZE 16 POSTED; QTY=1)	1883712-4
01	MODULE A 150 POSN MONOBLOCK W/ NONREMOVABLE CONTACTS MODULE B 150 POSN MONOBLOCK W/ NONREMOVABLE CONTACTS MODULE C 211431-4 (SIZE 22 POSTED; QTY=80) 2-448138-6 (SIZE 20 POSTED; QTY=4) 2-448139-5 (SIZE 16 POSTED; QTY=1)	1883712-3
47	MODULE A 150 POSN MONOBLOCK W/ NONREMOVABLE CONTACTS MODULE B 150 POSN MONOBLOCK W/ NONREMOVABLE CONTACTS MODULE C 211431-4 (SIZE 22 POSTED; QTY=80) 2-448138-6 (SIZE 20 POSTED; QTY=4) 2-448139-5 (SIZE 16 POSTED; QTY=1)	1883712-2
40	MODULE A 1-211431-5 (SIZE 22 POSTED; QTY=150) MODULE B 1-211431-5 (SIZE 22 POSTED; QTY=150) MODULE C 1-211431-5 (SIZE 22 POSTED; QTY=80) 2-448138-7 (SIZE 20 POSTED; QTY=4) 2-448139-6 (SIZE 16 POSTED; QTY=1)	1883712-1

COMPONENT	MATERIAL	FINISH
SHELL	DIE CAST ALUMINUM PER ASTM-B-85	ELECTROLESS NICKEL PER MIL-C-26074
INSERT RETENTION PLATES	ALUMINUM ALLOY PER ASTM-B-209	ELECTROLESS NICKEL PER MIL-C-26074
SCREWS AND LOCKWASHERS	STEEL OR STAINLESS STEEL	CHROMATE OVER ZINC OR PASSIVATED -2 PASSIVATED SST
POLARIZING KEYS	ZINC ALLOY PER ASTM-B-86	-
INSERTS	THERMOSET OR THERMOPLASTIC PPS PER MIL-M-24519	-
POLARIZING KEY RETAINING PLATE	ALUMINUM ALLOY PER ASTM-B-209	BLUE ANODIZED PER MIL-A-8625
-	-	-

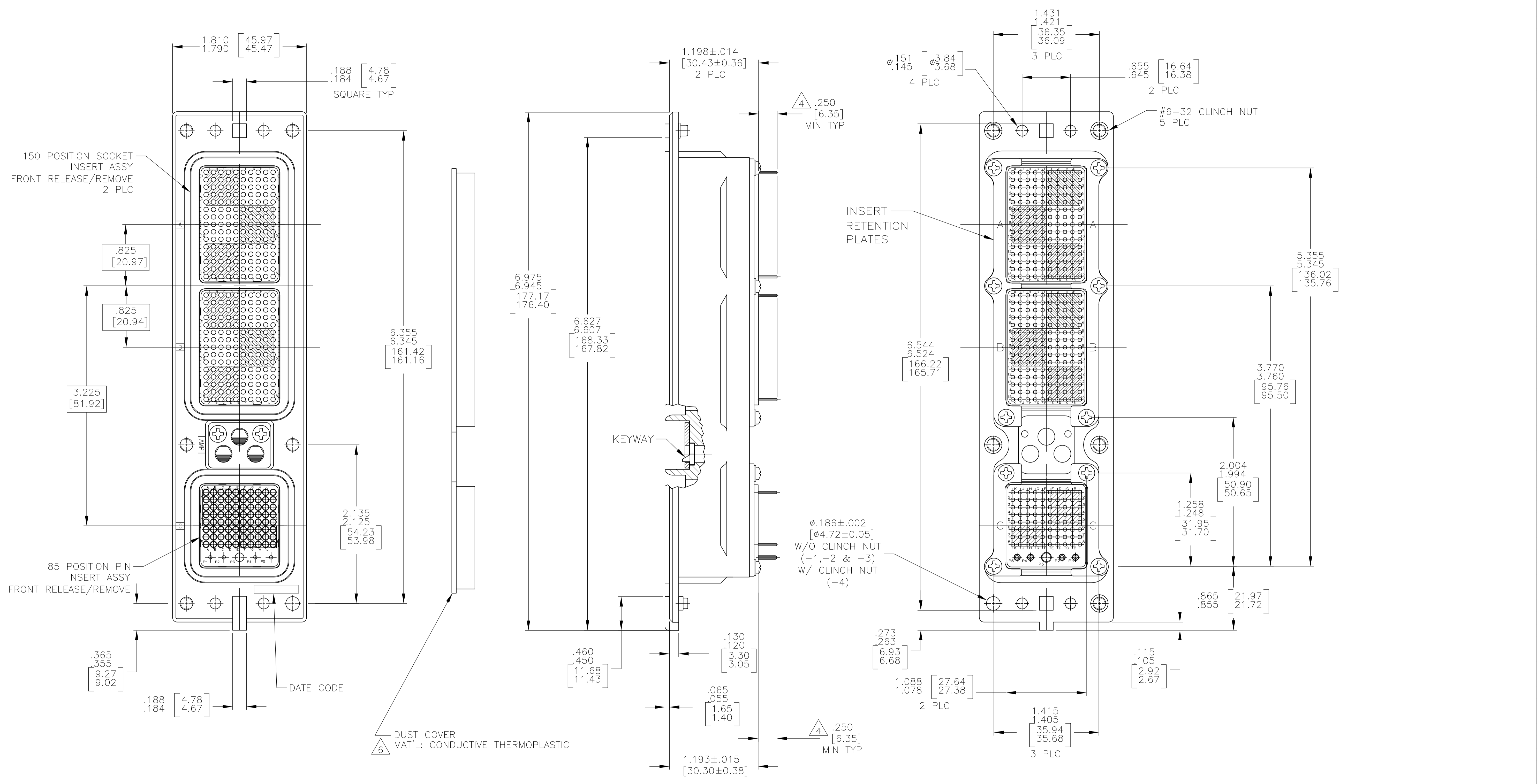
THIS DRAWING IS A CONTROLLED DOCUMENT.

DMN C.C.THOMAS 10-6-06	 TE Connectivity RCPT ASSY, SIZE 2, ARINC 600 (150/150/85)
CHK K.HOGAN 10-6-06	
APVD K.HOGAN 10-6-06	NAME
APPLICATION SPEC	
SIZE CASE CODE DRAWING NO	
A1 00779 1883712	
CUSTOMER DRAWING	

RESTRICTED TO

SCALE 1:1 SHEET 1 OF 2 REV F

REVISONS		DATE	BY	APPROV
1	SEE SHEET #1	-	-	-



THIS DRAWING IS A CONTROLLED DOCUMENT.		DWG C.C.THOMAS 10-6-06	TE Connectivity
DIMENSIONS: INCHES		CHK K.HOGAN 10-6-06	
TOLERANCES UNLESS OTHERWISE SPECIFIED:		APVD K.HOGAN 10-6-06	NAME RCPT ASSY, SIZE 2, ARINC 600 (150/150/85)
		PRODUCT SPEC	APPLICATION SPEC
MATERIAL SEE TABLE	FINISH SEE TABLE	WEIGHT -	SIZE A1
CUSTOMER DRAWING		DRAWING NO. 00779	RESTRICTED TO -
SCALE 1:1		SHEET 2 OF 2	REV F