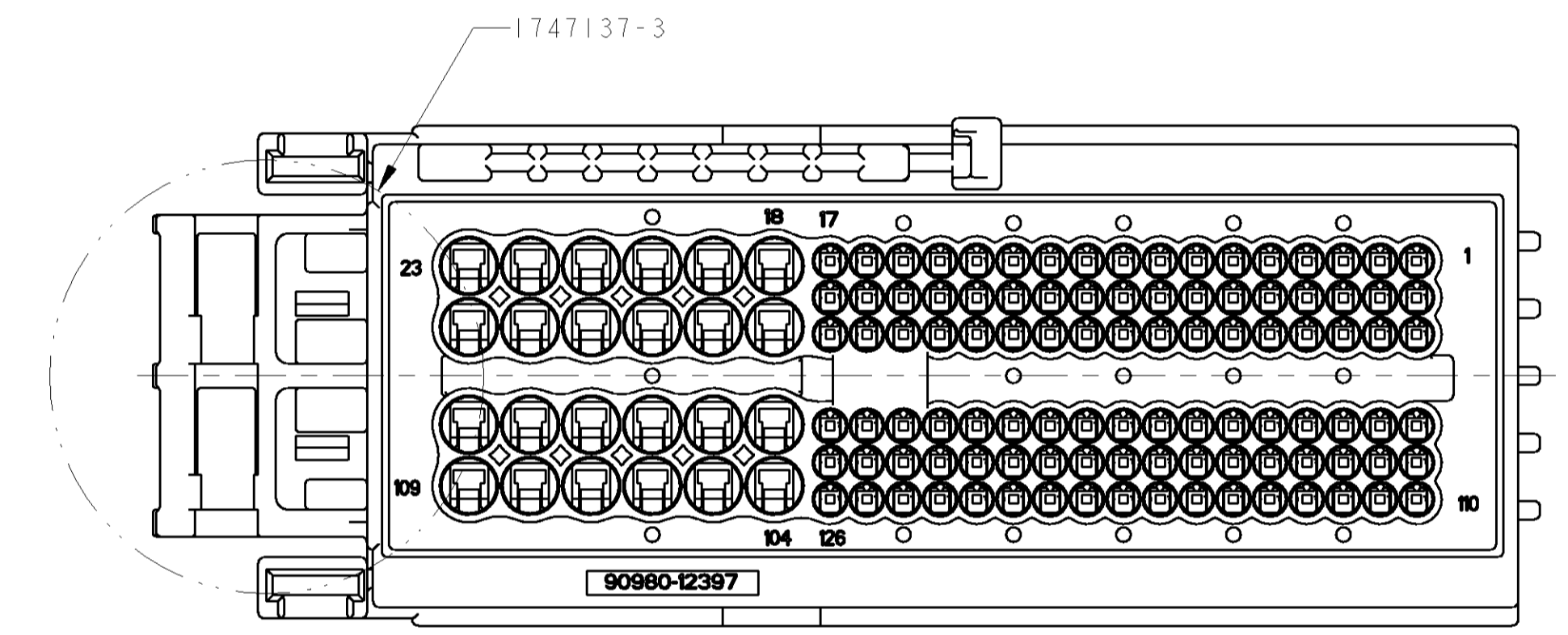
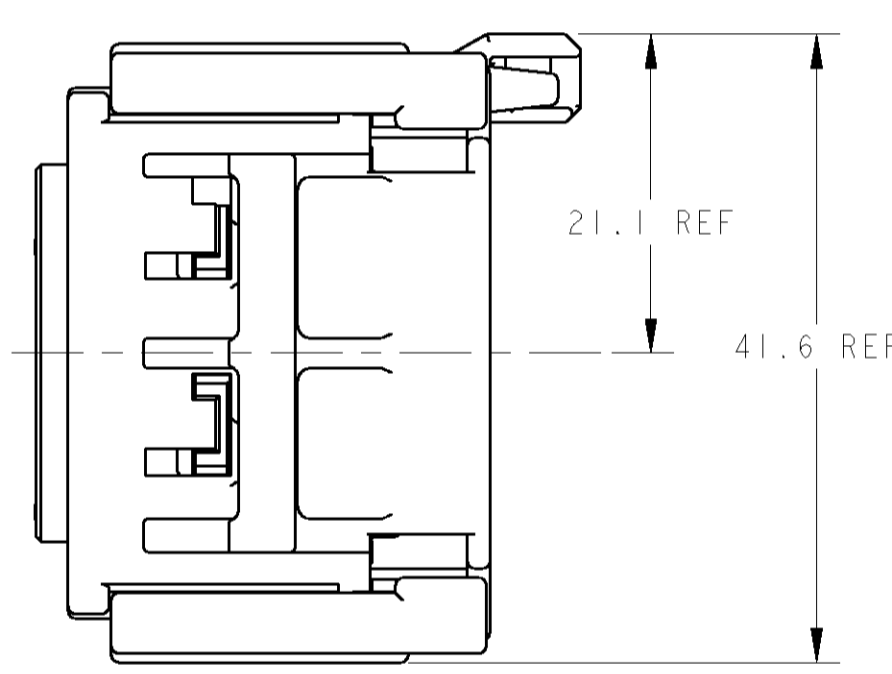
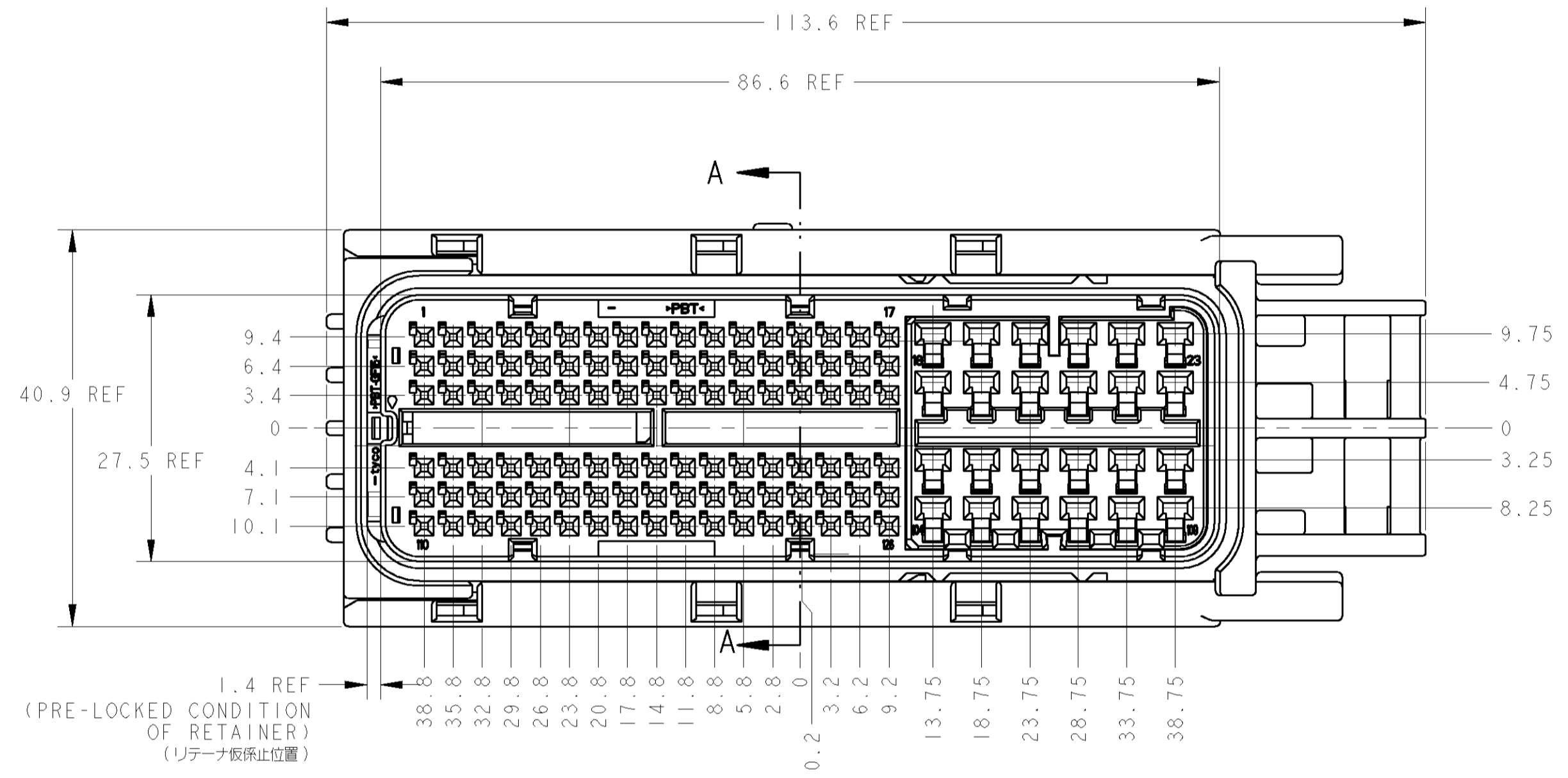
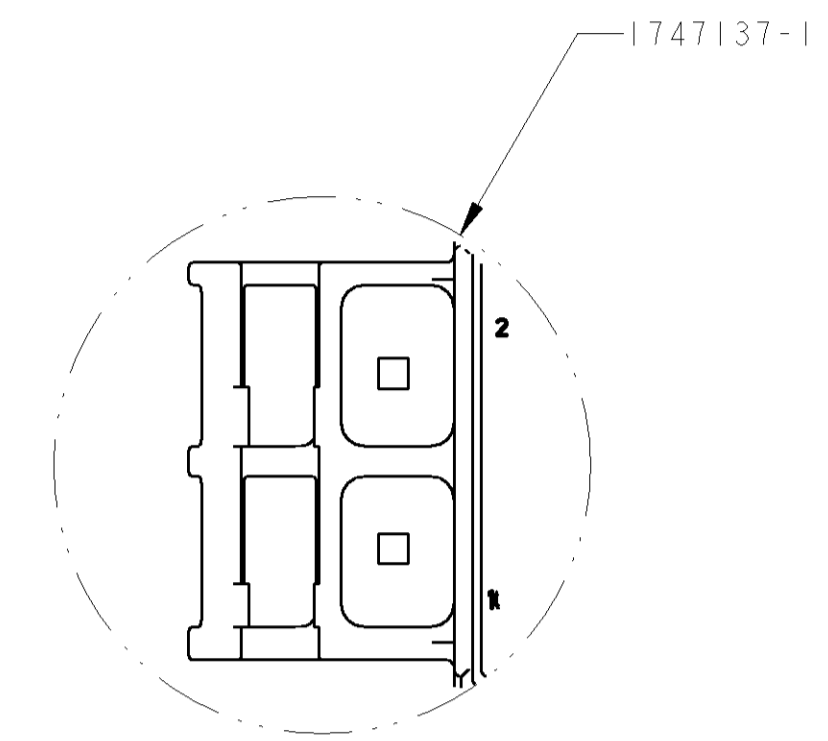
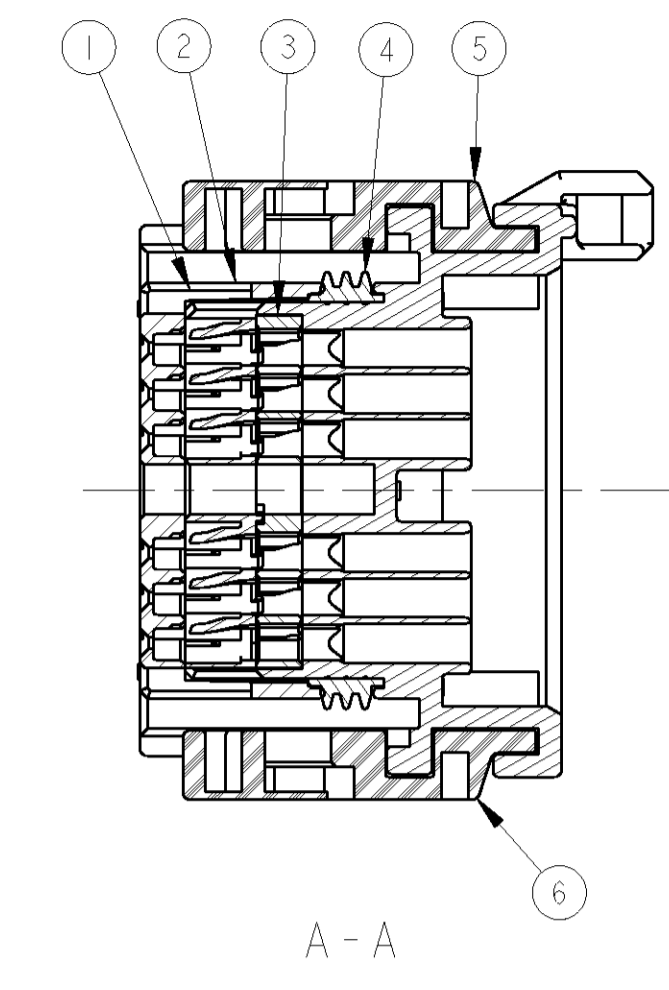
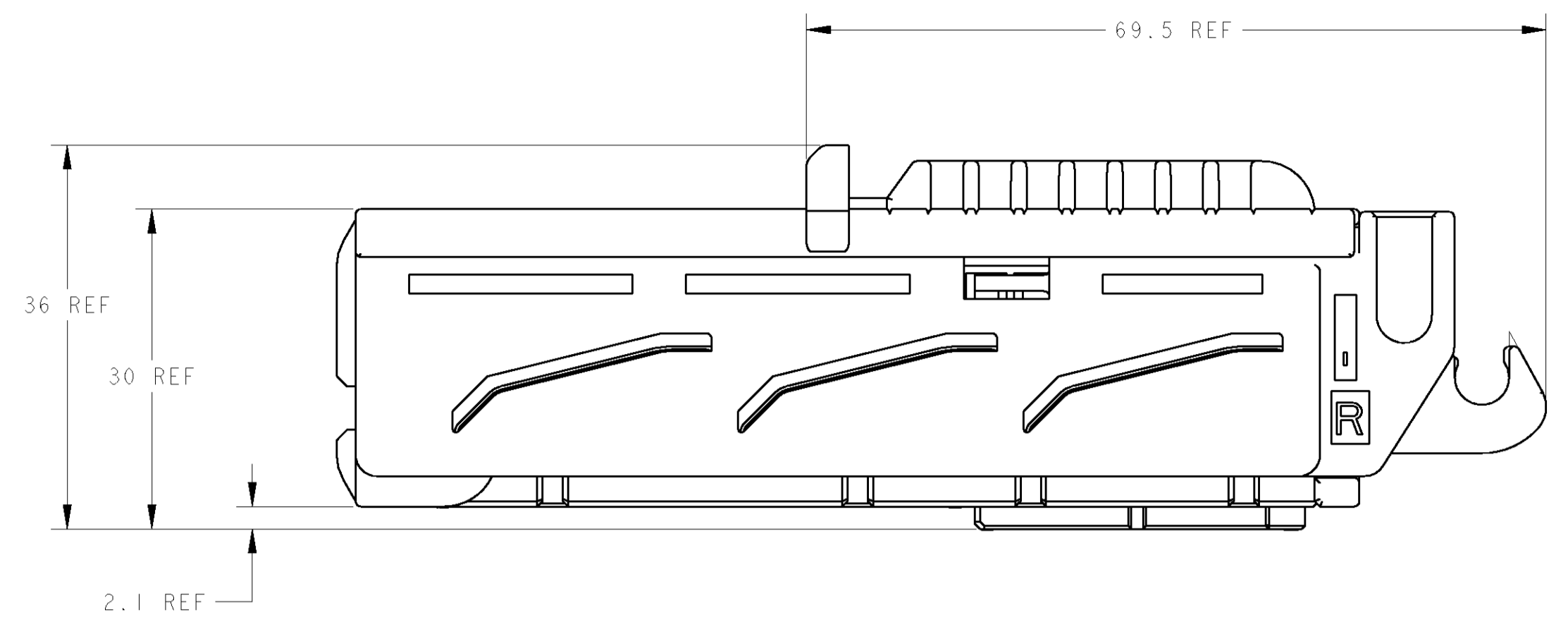


LOC		DIST		REVISIONS				
				REV	DESCRIPTION	DATE	DWN	APPR
J				A	RELEASED	10MAY06	SS	KS

-1, -3: AS SHOWN  
 -1, -3: 本図



- MATING CONNECTOR IS(P/N):  
 1747137-1/-3(126POS):1612272(186POS)  
 1747137-2/-4(89POS):1717313(149POS)
  - HANDLING OF THIS PART SHOULD FOLLOW INSTRUCTION SHEET NO.411-78084.
  - COMPONENTS OF THIS PART:SEE TABLE-1
  - THIS PRODUCT IS SHIPPED WITH RETAINER PRE-LOCKED POSITION.
  - ASSEMBLED BY CUSTOMER.  
 LEVER P/N FOR SUPPLEMEN(P/N):1747139
  - PLEASE USE A WIRE COVER, WHEN YOU CANNOT SECURE THE WORKING SPACE BETWEEN A LEVER AND AN ELECTRIC WIRE.
  - 1 AND -2 ARE THE CLIP NON-CORRESPONDENCES.
- 適合相手品番 (P/N):  
 1747137-1/-3(126POS):1612272(186POS)  
 1747137-2/-4(89POS):1717313(149POS)
  - 本製品の取扱は取扱説明書NO. 411-78084に従うこと
  - 本製品の構成部品; TABLE-1参照
  - リテーナは取扱状態でお届けされる。  
 レバーは顧客にて組立てされる。  
 補用レバー品番 (P/N):1747139
  - レバーと電線の隙間 (作業スペース) が確保出来ない時はカバーを使用下さい。
  - 1, -2は、クリップ非対応です。

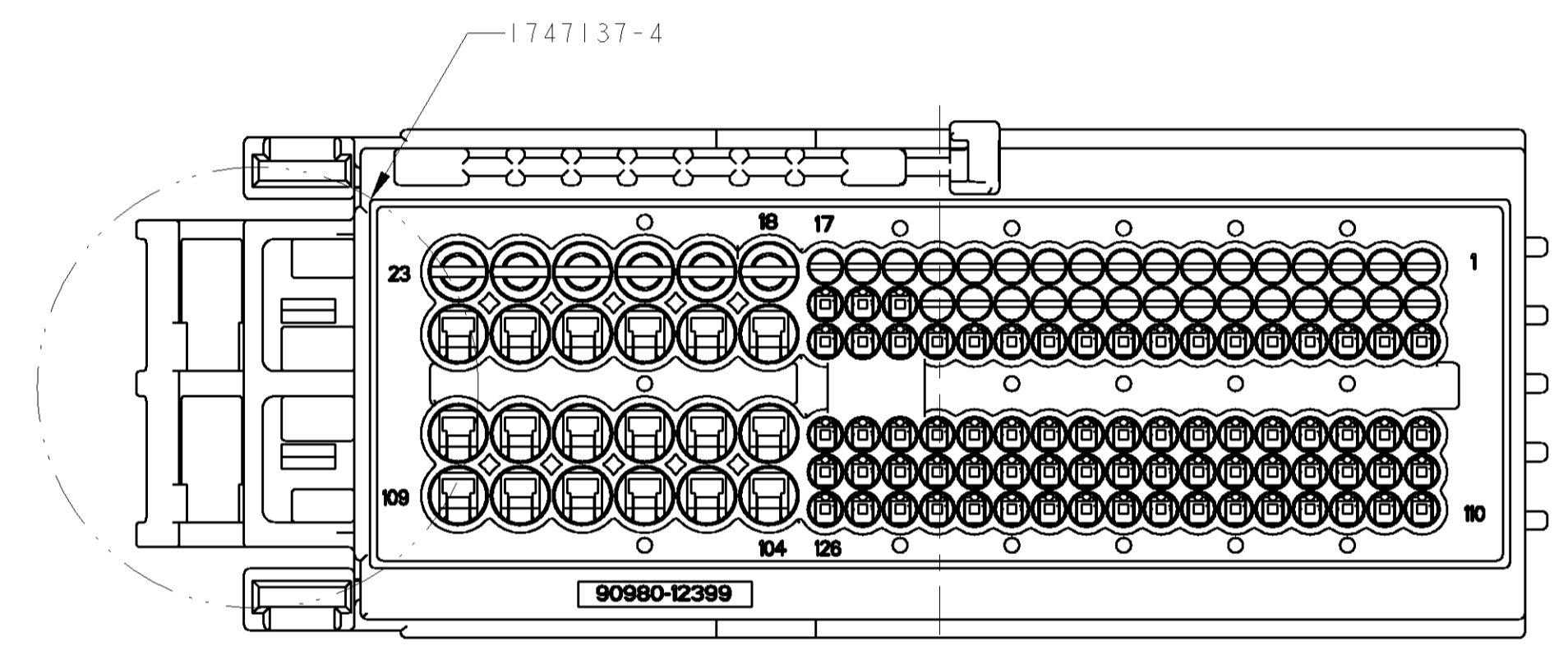
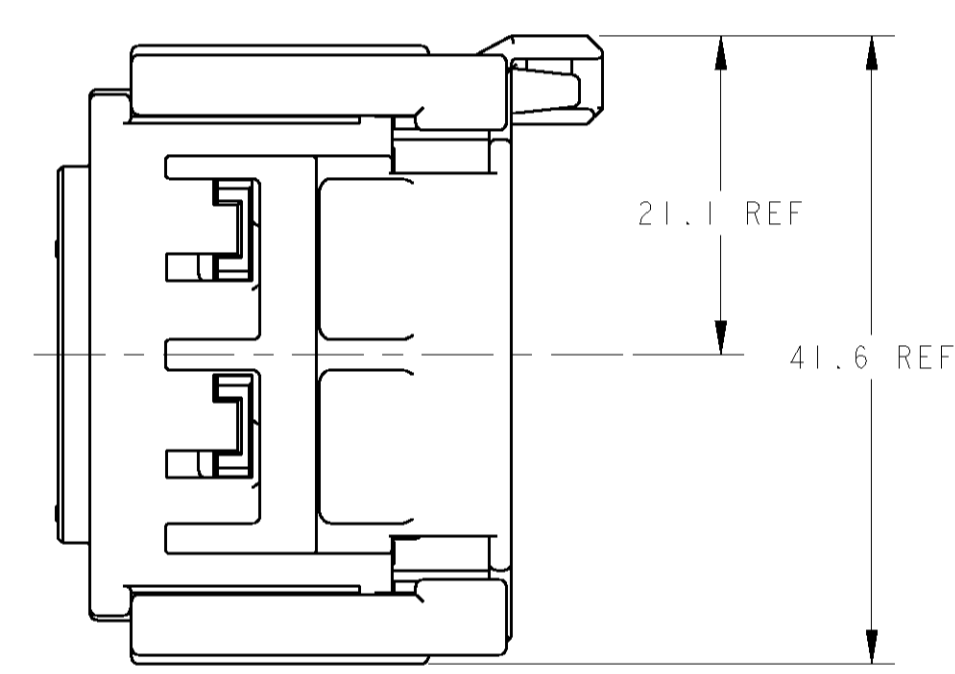
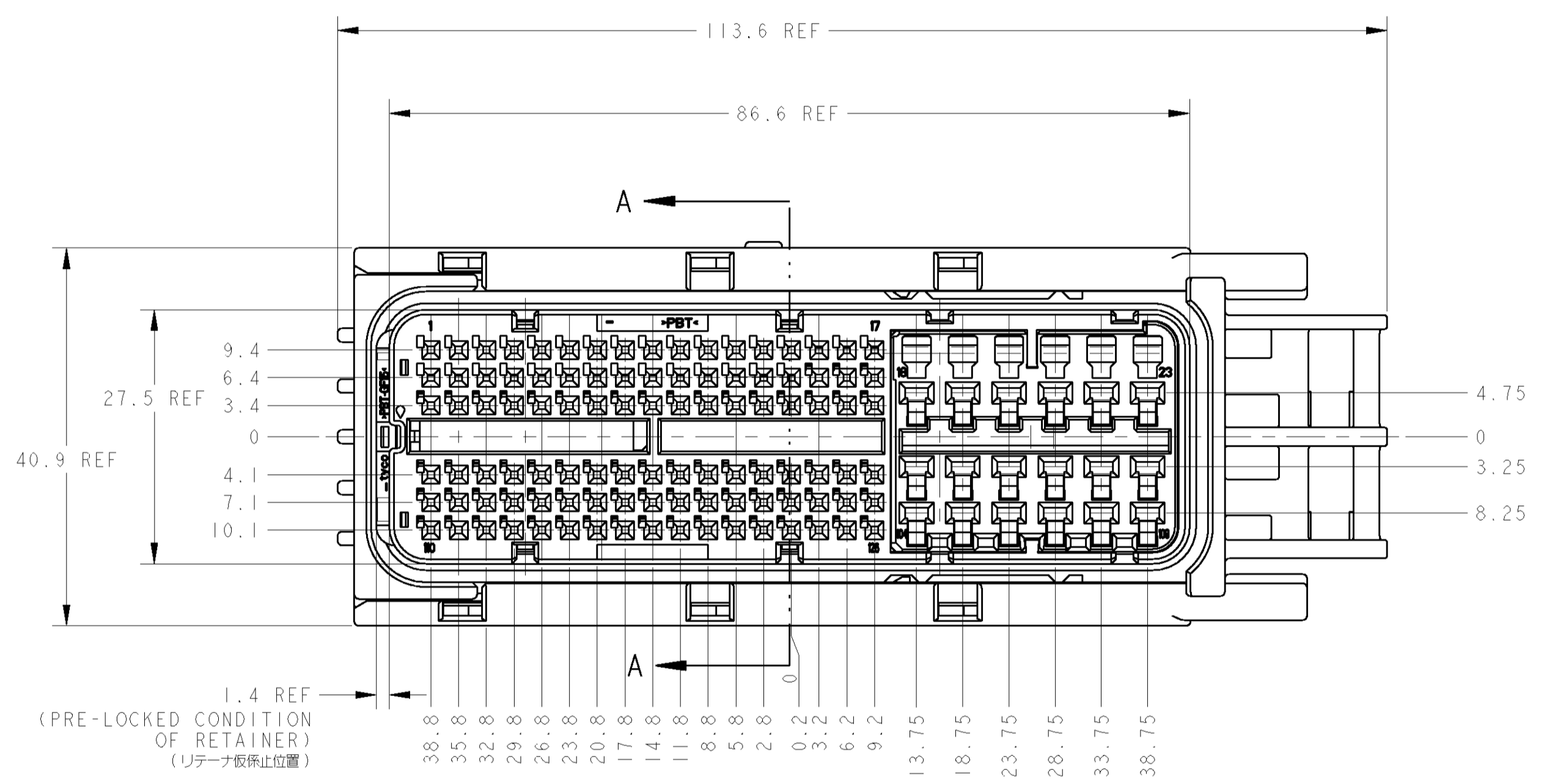
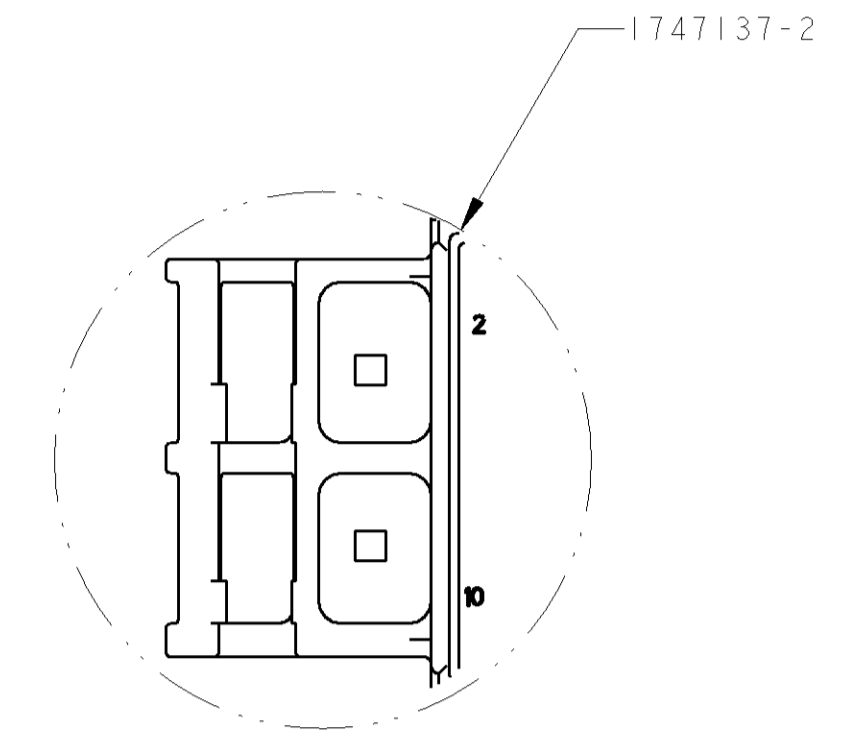
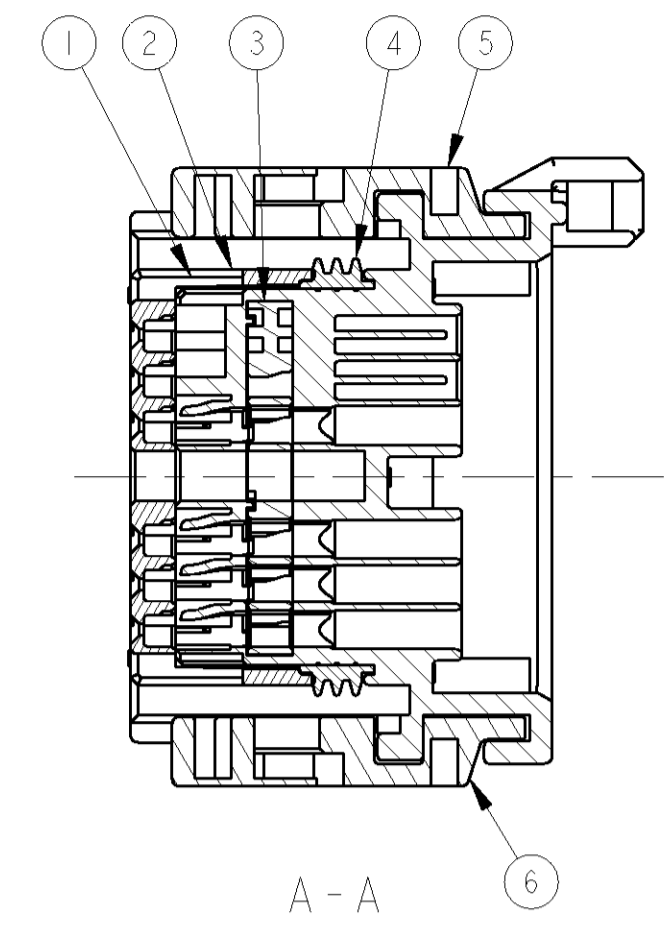
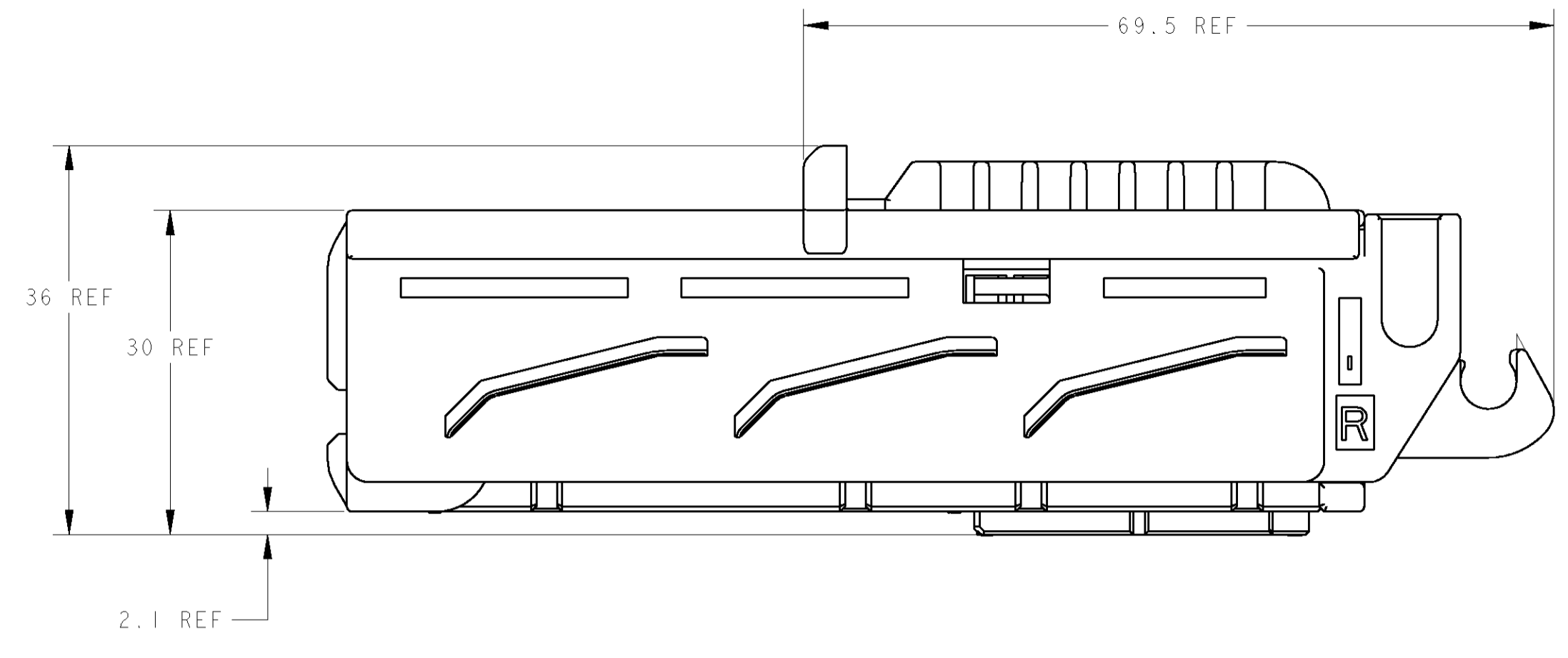
TABLE-1

PAPER BOX ダンボール箱 ソフトトレイ フリススタートレイ	PAPER BOX ダンボール箱 ソフトトレイ フリススタートレイ	PAPER BOX ダンボール箱 ソフトトレイ フリススタートレイ	PAPER BOX ダンボール箱 ソフトトレイ フリススタートレイ	OUTER 外装 INNER 内装	PACKING STYLE 梱包形態			ITEM NO.
I	I	I	I	BLACK	PBT	SLIDER-L	6	
I	I	I	I	BLACK	PBT	SLIDER-R	5	
I	I	I	I	REDDISH BROWN	SILICONE	SEAL RING	4	
I	—/—	I	—/—	LIGHT GLAY	PBT	89POS RETAINER	3	
—/—	I	—/—	I	NATURAL		126POS RETAINER		
I	I	I	I	BLACK	PBT	FRONT CAV	2	
I	—/—	—/—	—/—	BLACK	PBT	89POS PLUG HSG FOR CLIP	1	
—/—	I	—/—	—/—			126POS PLUG HSG FOR CLIP		
—/—	—/—	I	—/—			89POS PLUG HSG		
—/—	—/—	—/—	I			126POS PLUG HSG		
1747137-4	1747137-3	1747137-2	1747137-1	COLOR	MATERIAL	NAME		
89POS	126POS	89POS	126POS	AVAILABLE CAVITY POS / 使用可能キャビティ数				
69 g	69 g	70 g	70 g	NET WEIGHT 質量				

DIMENSIONS: mm mm		TOLERANCES UNLESS OTHERWISE SPECIFIED: mm mm		DRAWN S. SHISHIKURA CHK K. SAKAMAKI APPR S. ISOHATA	TOMAY06 TOMAY06 TOMAY06	Tyco Electronics AMP K.K. Kawasaki, Japan	
MATERIAL PBT		FINISH SEE TABLE		PRODUCT SPEC APPLICATION SPEC 108-5891 114-5336 WEIGHT SEE TABLE		NAME SEATED EFI ECU 0.64/2.311 I/O CONNECTOR 126POS/89POS PLUG HOUSING ASSY SIZE CAGE CODE DRAWING NO A100779 1747137 SCALE 2:1 SHEET 1 OF 2 REV A	
CUSTOMER DRAWING							

LOC		DIST		REVISIONS			
J	-	P	LTR	DESCRIPTION	DATE	DWN	APVD
		-		SEE SHEET 1			

-2, -4: AS SHOWN  
 -2, -4: 本図



DIMENSIONS: mm		TOLERANCES UNLESS OTHERWISE SPECIFIED: mm		DWN	-	<b>tyco</b> Tyco Electronics AMP K.K. Kawasaki, Japan
0.05 0.1 0.2 0.3 0.4 0.5 0.6 0.8 1.0 1.2 1.5 2.0 3.0 4.0 5.0 6.0 8.0 10.0 12.0 15.0 20.0 25.0 30.0 40.0 50.0 60.0 80.0 100.0 120.0 150.0 200.0 250.0 300.0 400.0 500.0 600.0 800.0 1000.0		±0.05 ±0.1 ±0.2 ±0.3 ±0.4 ±0.5 ±0.6 ±0.8 ±1.0 ±1.2 ±1.5 ±2.0 ±3.0 ±4.0 ±5.0 ±6.0 ±8.0 ±10.0 ±12.0 ±15.0 ±20.0 ±25.0 ±30.0 ±40.0 ±50.0 ±60.0 ±80.0 ±100.0 ±120.0 ±150.0 ±200.0 ±250.0 ±300.0 ±400.0 ±500.0 ±600.0 ±800.0 ±1000.0		CRK	-	
MATERIAL		FINISH		APVD	-	SIZE CAGE CODE DRAWING NO A 100779 1747137
CUSTOMER DRAWING				SCALE	2:1	SHEET 2 OF 2 REV A