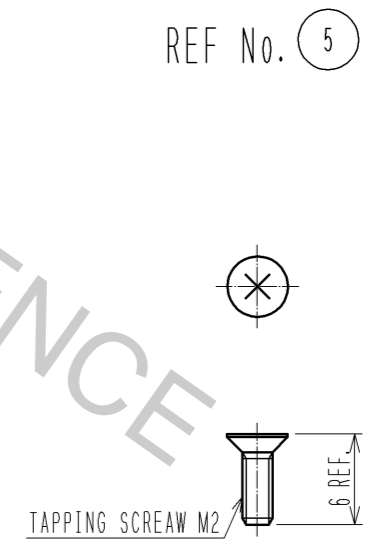
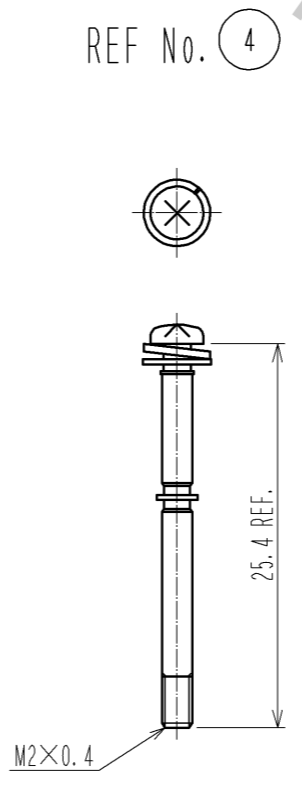
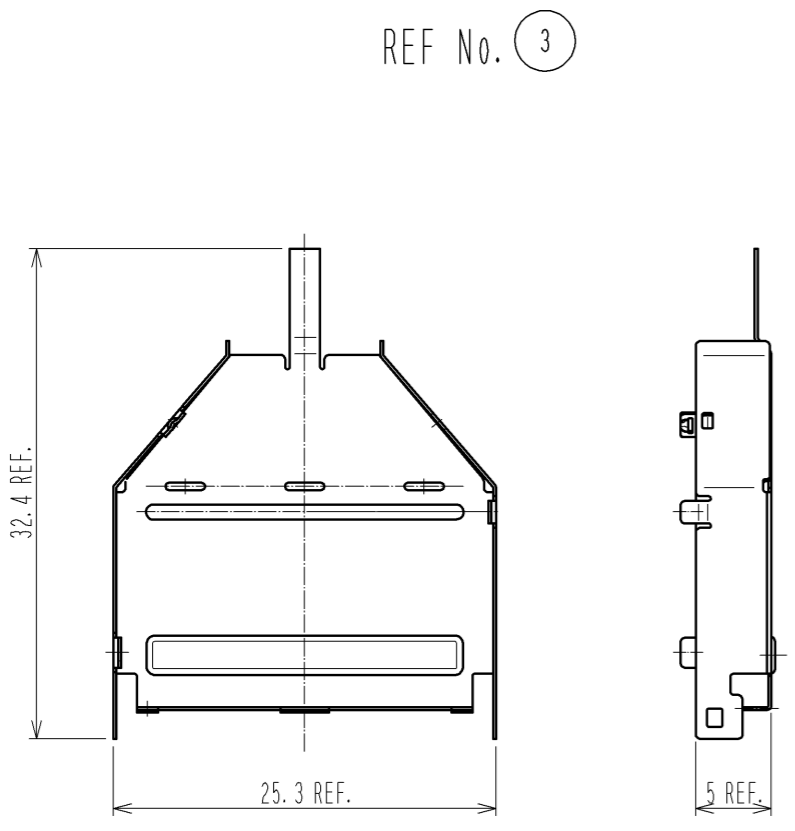
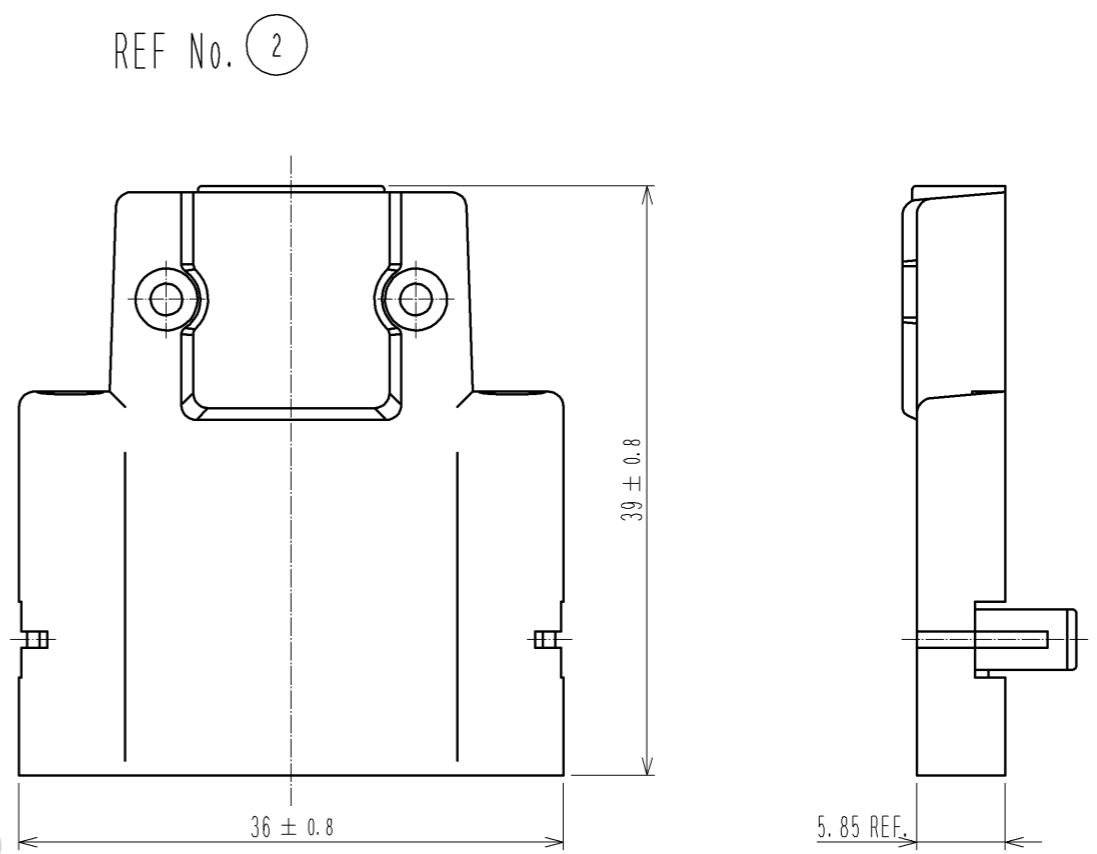
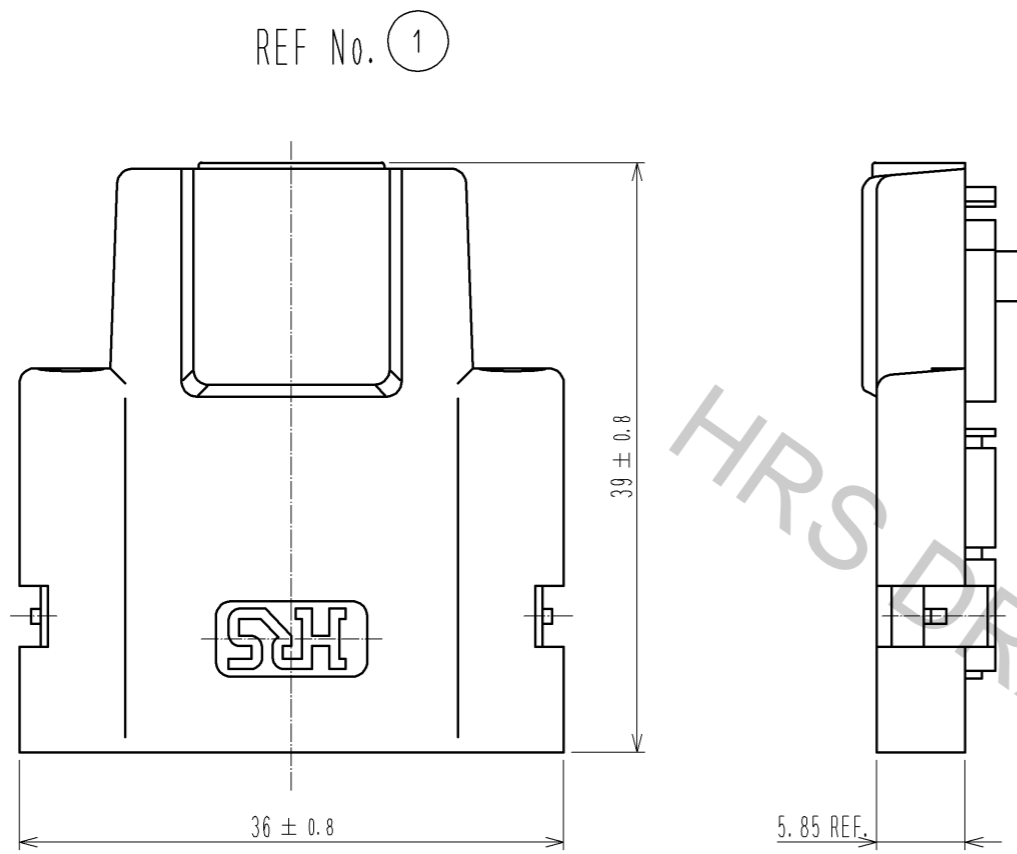


- NOTE 1. THIS PRODUCT IS DELIVERED SEPARATELY.  
 ① ② AS SHOWN IN THE FIGURE, THIS PRODUCT SHALL BE USED ASSEMBLED TO A CONNECTOR UNIT 'DH3+B-37S'. A CLAMP 'DH-37-CMB(8.8)' IS NEEDED WHEN ASSEMBLING THE UNIT.  
 3. THIS PRODUCT SHALL BE MATED WITH A RECEPTACLE 'DH60-37P\*' WHICH ASSEMBLED LOCK SCREWS 'DH-LNA\*\*\*'.  
 ④ A RECOMMENDED SCREW TIGHTENING TORQUE TO THE LOCK SCREWS TO BE FROM 0.06 TO 0.07 N·m.  
 ⑤ A RECOMMENDED SCREW TIGHTENING TORQUE FOR COVERS TO BE FROM 0.1 TO 0.15 N·m.

3	STAINLESS STEEL	PLATING : NICKEL 0.1 μm MIN	5	STEEL	TRIVALENT BLACK CHROMATE
2	PC	UL94V-0(BLACK)	4	STEEL	OVER PLATING : NICKEL 2 μm MIN
1					UNDER PLATING : COPPER 1 μm MIN
NO. MATERIAL FINISH . REMARKS			NO. MATERIAL FINISH . REMARKS		
UNITS mm		SCALE 4 : 1	COUNT 1	DESCRIPTION OF REVISIONS DIS-E-003061	
DESIGNED TM. ONO		CHECKED KN. ICHIKAWA		DATE 09.12.14	
APPROVED : KN. ICHIKAWA		09.11.17		DRAWING NO. EDC3-126588-00	
CHECKED : KN. ICHIKAWA		09.11.17		PART NO. DH-37-CV1B	
DESIGNED : MO. SHIMOYAMA		09.11.17		CODE NO. CL244-0011-8-00	
DRAWN : TM. ONO		09.11.16		① 1/2	

Apr.1.2017 Copyright 2017 HIROSE ELECTRIC CO., LTD. All Rights Reserved.



<b>HRS</b>	DRAWING NO.	EDC3-126588-00	
	PART NO.	DH-37-CV1B	
	CODE NO.	CL244-0011-8-00	