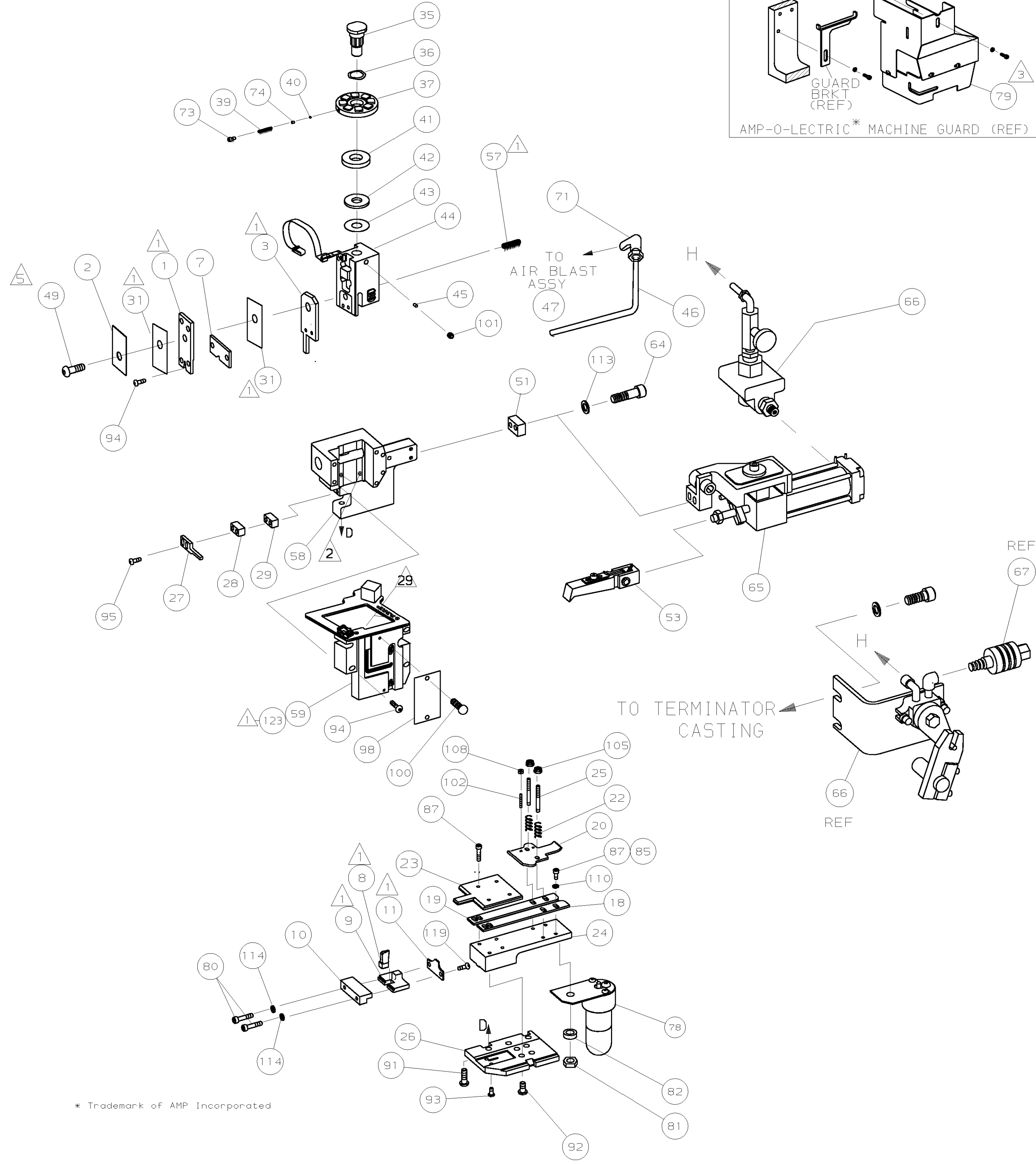
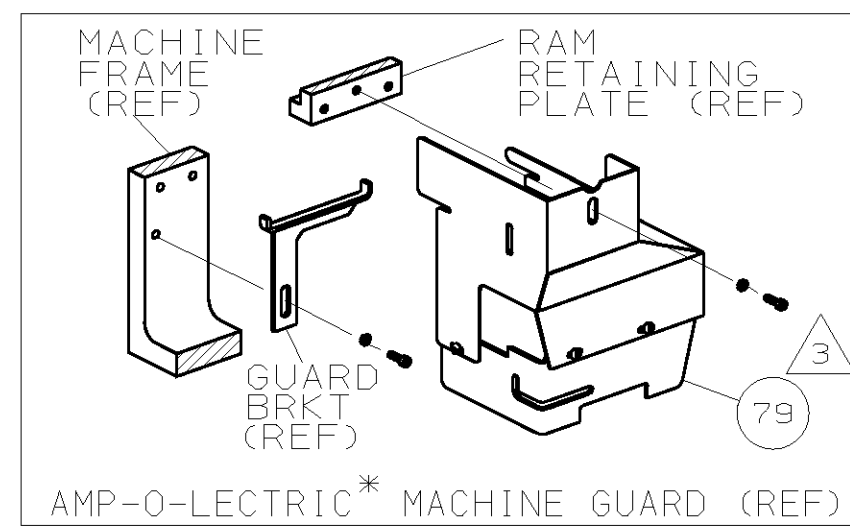


PART NUMBER	REV	FIRST USED
567705-1	C	852070-1



* Trademark of AMP Incorporated

- 1 RECOMMENDED SPARE PARTS.
- 2 GREASE LIGHTLY.
- 3 GUARD MUST BE IN PLACE WHEN OPERATING APPLICATOR IN AMP-O-LECTRIC MACHINE.
- 4 SEE DRAWING FOR COMPONENTS
- 5 TORQUE ITEM 49 TO 60 INCH POUNDS

TERMINAL NAME:
5PLICE (AMPLIVAR) 9 SERRATIONS
62308-2

PAD LTR	CRIMP HEIGHT	WIRE SIZE CMA	REC. SETUP WIRE
A	.089 ±.002	6200-7000	(1) 16 MAGNET (1) 14 AWG
B	.084 ±.002	5200-6000	(2) 16 AWG
C	.079 ±.002	4000-5000	(1) 17 MAGNET (1) 16 AWG
D	.074 ±.002	3000-3800	(2) 18 MAGNET

CRIMP	SIZE	TYPE	RANGE
WIRE	.140	F	3000-7000 CMA
INSUL	-	-	-

FEED	APPL INST	SET UP GAGE	LAYOUT
.345	A1 8039 & 9640	-	L14930

WIRE STRIP LENGTH -

WIRE STRIP LENGTH	APPLICATOR	WIRE
-1	AMP-O-LECTRIC	AIRFEED

TERM APPL SPEC -

CRIMPING DATA

PAD LTR	CRIMP HEIGHT	WIRE SIZE CMA	REC. SETUP WIRE
A	.089 ±.002	6200-7000	(1) 16 MAGNET (1) 14 AWG
B	.084 ±.002	5200-6000	(2) 16 AWG
C	.079 ±.002	4000-5000	(1) 17 MAGNET (1) 16 AWG
D	.074 ±.002	3000-3800	(2) 18 MAGNET

CRIMP	SIZE	TYPE	RANGE
WIRE	.140	F	3000-7000 CMA
INSUL	-	-	-

FEED	APPL INST	SET UP GAGE	LAYOUT
.345	A1 8039 & 9640	-	L14930

WIRE STRIP LENGTH -

WIRE STRIP LENGTH	APPLICATOR	WIRE
-1	AMP-O-LECTRIC	AIRFEED

STANDARD FORCE CRIMP QUALITY MONITOR APPLICATOR
S1M HDM 567016-1

QTY	REV	DESCRIPTION	ITEM NO
			70
			69
			68
			67
			66
			65
			64
			63
			62
			61
			60
			59
			58
			57
			56
			55
			54
			53
			52
			51
			50
			49
			48
			47
			46
			45
			44
			43
			42
			41
			40
			39
			38
			37
			36
			35
			34
			33
			32
			31
			30
			29
			28
			27
			26
			25
			24
			23
			22
			21
			20
			19
			18
			17
			16
			15
			14
			13
			12
			11
			10
			9
			8
			7
			6
			5
			4
			3
			2
			1

					125
					124
					123
					122
					121
					120
					119
					118
					117
					116
					115
					114
					113
					112
					111
					110
					109
					108
					107
					106
					105
					104
					103
					102
					101
					100
					99
					98
					97
					96
					95
					94
					93
					92
					91
					90
					89
					88
					87
					86
					85
					84
					83
					82
					81
					80
					79
					78
					77
					76
					75
					74
					73
					72
					71

QTY	REV	DESCRIPTION	ITEM NO
-1	U/M	DWG SIZE	
		PART NO	
		DESCRIPTION	
REVISION OF EACH ASSY NO (WHEN BLANK, USE DWG REVISION)			
PARTS LIST			

QTY	REV	DESCRIPTION	ITEM NO
-1	U/M	DWG SIZE	
		PART NO	
		DESCRIPTION	
REVISION OF EACH ASSY NO (WHEN BLANK, USE DWG REVISION)			
PARTS LIST			

DIMENSIONS IN INCHES. DO NOT SCALE PRINT. TOLERANCES UNLESS OTHERWISE SPECIFIED:
 2 PLC DEC ±.25
 3 PLC DEC ±.
 4 PLC DEC ±.
 ANGLES ±.
 SURF TEXTURE: ✓
 REMOVE BURRS, BREAK SHARP EDGES R.015 MAX

MATL	HT TR	FIN
-	-	-

DR	5-25-95	APP	5-25-95
B. HIGMAN		S. FERRANTI	
CHK	5-25-95	REL	6/13/95
C. ERISMAN		B. MORGAN	

AMP AMP Incorporated Harrisburg, PA 17105-3608

NAME: END FEED CQM APPLICATOR MACHINE REF: MINI APPL

SCALE: - DWG NO: 567705 SHEET: 1 OF 1 REV: C

THIS DRAWING IS A CONTROLLED DOCUMENT.

RELEASED FOR PUBLICATION MAY 19, 1995 BY AMP INCORPORATED. ALL RIGHTS RESERVED.

LOC A DIST 66

567705