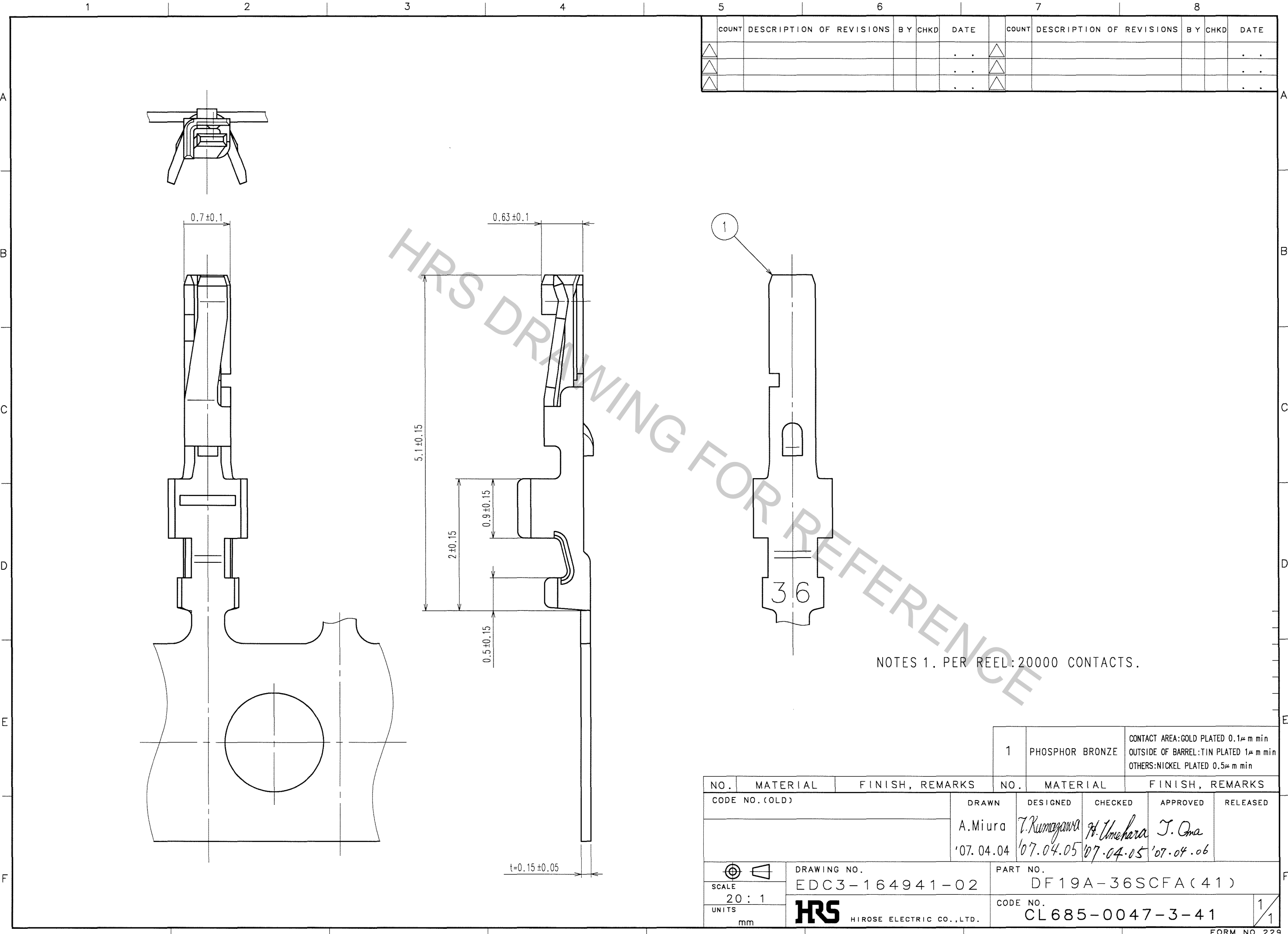


Apr.1.2017 Copyright 2017 HIROSE ELECTRIC CO., LTD. All Rights Reserved.



COUNT	DESCRIPTION OF REVISIONS	BY	CHKD	DATE	COUNT	DESCRIPTION OF REVISIONS	BY	CHKD	DATE
△				..	△				..
△				..	△				..
△				..	△				..

NOTES 1. PER REEL: 20000 CONTACTS.

TO

1	PHOSPHOR BRONZE	CONTACT AREA: GOLD PLATED 0.1μm min OUTSIDE OF BARREL: TIN PLATED 1μm min OTHERS: NICKEL PLATED 0.5μm min
---	-----------------	---

NO.	MATERIAL	FINISH, REMARKS	NO.	MATERIAL	FINISH, REMARKS

CODE NO. (OLD)	DRAWN	DESIGNED	CHECKED	APPROVED	RELEASED
	A.Miura	T.Kumagawa	H.Umehara	J.Oma	
	'07.04.04	'07.04.05	'07.04.05	'07.04.06	

 SCALE 20:1 UNITS mm	DRAWING NO. EDC3-164941-02 HRS HIROSE ELECTRIC CO., LTD.	PART NO. DF19A-36SCFA(41) CODE NO. CL685-0047-3-41	<table border="1"> <tr> <td>1</td> </tr> <tr> <td>1</td> </tr> </table>	1	1
1					
1					