

## AIT00ZPFC-01NL

150 Watts

### Data Sheet

**Total Power:** 150 Watts  
**Input Voltage:** 100 - 122 Vac  
**# of Outputs:** Single

### SPECIAL FEATURES

- Unity power factor
- High efficiency - up to 92%
- Civil / Aviation supply frequency range (50 / 60 / 360 - 800 Hz)
- Up to 150 W output power
- Negative enable function
- RTCA-DO 160 compliant
- IEC1000-3-2 compliance at 50 Hz to 800 Hz input
- 100 °C baseplate operating temperature
- DC Input option
- Enable output to control DC-DC Converter
- Internal active switch bypassing external inrush current components

### SAFETY

- UL cUL 60950 Recognized
- TUV EN60950 Licensed



### Electrical Specifications

#### Input

Input range	100 - 122 Vac
Input Surge	170 Vac / 500 ms
Input Frequency	50 Hz/60 Hz / 360 - 800 Hz
Efficiency	91% @ 115 Vac, 400 Hz 150 W (typical)
Total harmonic	RTCA-DO 160 Compliant
Power factor	0.99 typical (115 Vac; 50 Hz to 360 Hz; 150 W) 0.98 typical (115 Vac; 800 Hz; 150 W)

#### Control

LD enable	Direct drive output to opto-isolator
PFC enable	Neg TTL compatible
Voltage adjust	78% to 100% Vo

#### Output

Output voltage	393 V typical
Overvoltage Protection	430 V max
Power Limit for AC input	Vin = 115 Vac, Pmax = 180 W Vin = 95 Vac, Pmax = 120 W

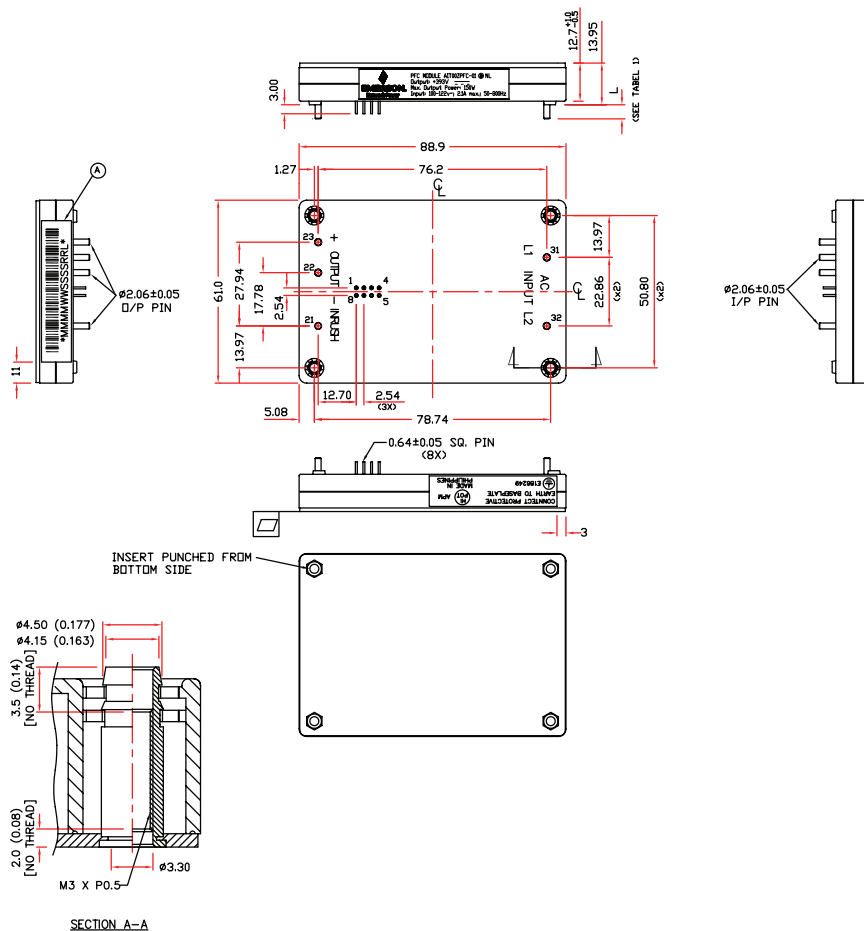
#### Isolation

I/O isolation	None
Input to baseplate	2700 Vdc
Output to baseplate	2700 Vdc
Leakage current	< 3 mA at 800 Hz input frequency

### Environmental Specifications

Operating temperature	-20 °C to +100 °C (baseplate temperature)
Start-up temperature	-40 °C
Storage temperature	-40 °C to +120 °C
Overtemperature protection	120 °C max
MTBF	> 1 million hours

Mechanical Drawings



Pin Assignments

Input (AC)	Output (DC)	Control Pins
31. L1	21. Inrush	1. NC
32. L1	22. Negative	2. NC
	23. Positive	3. LE Adj
		4. Temp Mon
		5. LD Enable
		6. V Adj
		7. PF Enable
		8. GND

WORLDWIDE OFFICES

Americas

2900 S.Diablo Way  
 Tempe, AZ 85282  
 USA  
 +1 888 412 7832

Europe (UK)

Waterfront Business Park  
 Merry Hill, Dudley  
 West Midlands, DY5 1LX  
 United Kingdom  
 +44 (0) 1384 842 211

Asia (HK)

14/F, Lu Plaza  
 2 Wing Yip Street  
 Kwun Tong, Kowloon  
 Hong Kong  
 +852 2176 3333



www.artesyn.com

While every precaution has been taken to ensure accuracy and completeness in this literature, Artesyn Embedded Technologies assumes no responsibility, and disclaims all liability for damages resulting from use of this information or for any errors or omissions. Artesyn Embedded Technologies, Artesyn and the Artesyn Embedded Technologies logo are trademarks and service marks of Artesyn Embedded Technologies, Inc. All other names and logos referred to are trade names, trademarks, or registered trademarks of their respective owners. © 2015 Artesyn Embedded Technologies, Inc.

For more information: [www.artesyn.com/power](http://www.artesyn.com/power)  
 For support: [productsupport.ep@artesyn.com](mailto:productsupport.ep@artesyn.com)