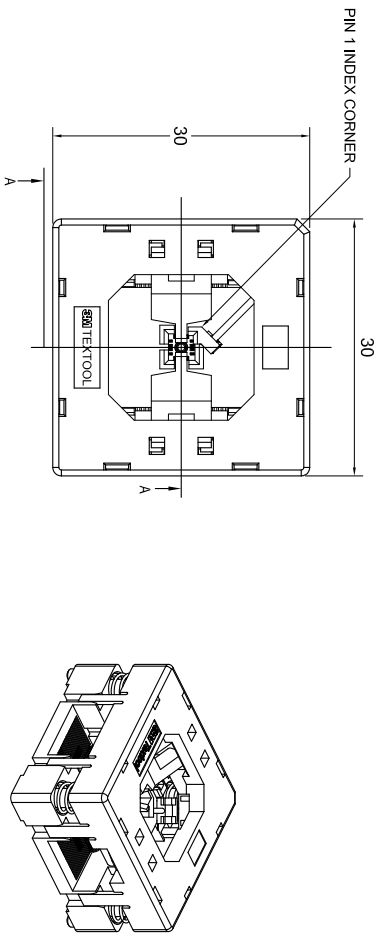


# 3M™ TEXTOL™ QFN TEST AND BURN-IN SOCKET



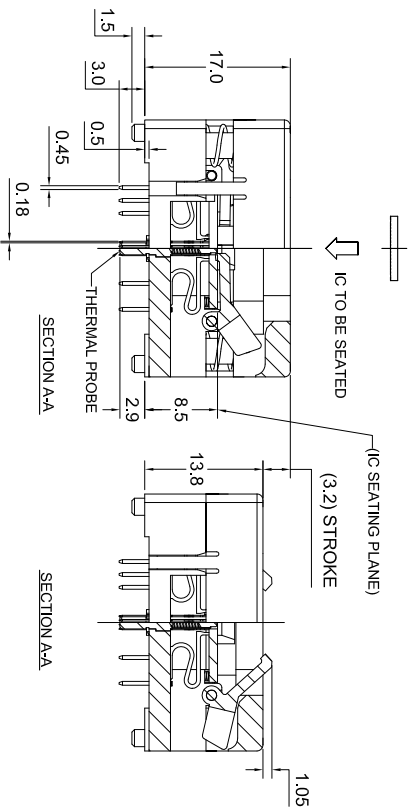
## NOTES:

### 1. MATERIALS:

SPRINGS	SS	PLATING : Au
CONTACTS	Be Cu	COLOR : BLACK
IC GUIDES	PES	COLOR : BLACK
PRESSURE PAD	PES	COLOR : BLACK
COVER	PPS or equiv.	COLOR : BLACK
BASE	PES	COLOR : BLACK

2. SEE THE REGULATORY INFORMATION APPENDIX (RIA) IN THE "ROHS COMPLIANCE" SECTION [WWW.3MCONNECTOR.COM](http://WWW.3MCONNECTOR.COM) FOR COMPLIANCE INFORMATION (RIA E1 & C1 APPLY).

3. FOR PRODUCT SPECIFICATIONS AND WARRANTY INFORMATION SEE: [WWW.3MCONNECTOR.COM](http://WWW.3MCONNECTOR.COM) PN 216-5205-01



DESIGN REFERENCE	NEXT ASSEMBLY	DATE	DATE	DATE	DATE
DATE	DATE	DATE	DATE	DATE	DATE
DESIGNER	CHKD	DATE	DATE	DATE	DATE
DO NOT SCALE DRAWING	SCALE	TOLERANCES EXCEPT AS NOTED	UNIT	ANGLES	1°
THIRD ANGLE PROJECTION	0.1	0.001	0.001	0.001	0.001
PREPARED PER	0.1	0.001	0.001	0.001	0.001
ASME Y14.5-1994	0.1	0.001	0.001	0.001	0.001
MAX SURFACE ROUGHNESS	0.1	0.001	0.001	0.001	0.001
CALL SURFACES	0.1	0.001	0.001	0.001	0.001
125	0.1	0.001	0.001	0.001	0.001
UNMARKED ONLY	0.1	0.001	0.001	0.001	0.001
CAGE NUMBER	78-5100-2518-8	DATE	DATE	DATE	DATE
ISSUE	DEF	DATE	DATE	DATE	DATE
TEXTOL - QFN	DEF	DATE	DATE	DATE	DATE
LISTS	DEF	DATE	DATE	DATE	DATE
YES	DEF	DATE	DATE	DATE	DATE
NO	DEF	DATE	DATE	DATE	DATE
SHT	DEF	DATE	DATE	DATE	DATE
1	DEF	DATE	DATE	DATE	DATE
OF	DEF	DATE	DATE	DATE	DATE
2	DEF	DATE	DATE	DATE	DATE

