

ATLANTIC VERSION TERMINATOR INTERFACE ADAPTER	PART NUMBER	REVISION	DESCRIPTION	FEED TYPE	APPLICATOR STYLE CONVERSION CHART						
					CONVERT TO	PART NUMBERS REQUIRED					
	2150482-1	A	FINE CRIMP HEIGHT ADJUST	MECHANICAL	PNEUMATIC FEED	2119950-1	2119792-8	-	2119641-1	-	2063440-1
					SERVO LATCH PLATE	2119951-1	1901697-1	8-2150482-5	-	-	2168400-7 (QUANTITY 2)
					SMART APPLICATOR	2161326-1	-	8-2150482-4	-	-	-
	2150482-2	A	FINE CRIMP HEIGHT ADJUST	PNEUMATIC	MECHANICAL FEED	2119949-1	2063961-1	5-18022-5	2119653-1	-	-
					SERVO LATCH PLATE	2119951-1	1901697-1	8-2150482-5	-	-	2168400-7 (QUANTITY 2)
					SMART APPLICATOR	2161326-1	-	8-2150482-4	-	-	-
	2150482-5	A	FINE CRIMP HEIGHT ADJUST	SERVO LATCH PLATE <sup>4</sup>	MECHANICAL FEED	2119949-1	2063961-1	5-18022-5	2119653-1	-	2063440-1
					PNEUMATIC FEED	2119950-1	2119792-8	-	2119641-1	-	-
	2150482-6	A	NON-CRIMP HEIGHT ADJUST	SERVO LATCH PLATE <sup>4</sup>	-	-	-	-	-	-	-
					-	-	-	-	-	-	-
	2150482-7	A	FINE CRIMP HEIGHT ADJUST	NONE	-	-	-	-	-	-	-
	7-2150482-7	A	CRIMP TOOLING KIT	-	-	-	-	-	-	-	-

APPLICATOR DATA		
CRIMP	SIZE	TYPE
WIRE	1.78 mm [.070]	F
INSUL	2.29 mm [.090]	F
APPLICATOR INSTRUCTIONS 408-10390		

TERMINAL DATA: TE TERMINAL		TE CRIMP SPECIFICATION	
TERMINAL NAME: RECEPTACLE, FASTON, .250 SERIES			
WIRE STRIP LENGTH		INSULATION DIAMETER RANGE	
4.40-5.16 mm [.173-.203 IN]		Ø0.76-1.78 mm [.030-.070 IN]	
TERMINAL APPLICATION SPECIFICATION	114-2036	-	-
TERMINALS APPLIED			
TE TERMINAL	TE TERMINAL	TE TERMINAL	TE TERMINAL
61368-1	61368-3		

WIRE SIZE	CRIMP HEIGHT mm [INCH]	CRIMP HEIGHT REFERENCE SETTING
20 AWG OR 0.50mm2	1.30+/-0.05 [.051+/-0.002]	8.4
22 AWG OR 0.35mm2	1.24+/-0.05 [.049+/-0.002]	9.2
0.25mm2	1.19+/-0.05 [.047+/-0.002]	9.5
24 AWG OR 0.21mm2	1.17+/-0.05 [.046+/-0.002]	9.6

- <sup>1</sup> RECOMMENDED SPARE PARTS
- <sup>2</sup> GREASE BEARING SURFACES LIGHTLY
- 3. LUBRICATE DAILY PER THE APPLICATOR INSTRUCTION SHEET SUPPLIED WITH THE APPLICATOR.
- <sup>4</sup> APPLICATOR SPECIFIC DATA TO BE ENTERED INTO BLANK MEMORY CHIP AT ASSEMBLY. SEE BELOW FOR PART NUMBER:  
 MECHANICAL FEED WITH "SMART APPLICATOR" CONVERSION: 8-2150482-4  
 PNEUMATIC FEED WITH "SMART APPLICATOR" CONVERSION: 8-2150482-4  
 SERVO FEED WITH "FINE CRIMP HEIGHT ADJUST": 8-2150482-5  
 SERVO FEED WITH "NON-CRIMP HEIGHT ADJUST": 8-2150482-6
- 5. ADJUSTMENT OF THE STRIPPER MAY BE REQUIRED WHEN MOVING THE APPLICATOR BETWEEN BENCH AND LEADMAKER APPLICATIONS.
- <sup>6</sup> APPLY PART NUMBER 1-23419-5 LOCTITE TO THREADS OF ITEMS 62 & 180. APPLY PART NUMBER 2-23419-6 LOCTITE TO THREADS OF ITEM 242. FOR -6 ONLY APPLY PART NUMBER 1-23419-5 LOCTITE TO THREADS OF ITEMS 37 & 180.
- <sup>7</sup> GREASE THREADS, GROOVE AND O-RING ON ITEMS 35 & 252.
- <sup>8</sup> MAGNET, ITEM 166 MUST BE ORIENTED CORRECTLY IN ORDER TO PROPERLY ACTUATE THE COUNTER.
- <sup>9</sup> CRIMP HEIGHT REFERENCE SETTING WAS THE SETTING USED WHEN THE APPLICATOR WAS QUALIFIED AT THE FACTORY. ADJUSTMENT MAY BE NECESSARY WHEN RUNNING APPLICATOR IN THE FIELD.
- <sup>10</sup> SPARE FEED CAM STORAGE LOCATION REFER TO INSTRUCTION SHEET FOR ADDITIONAL INFORMATION.
- <sup>11</sup> THE RECOMMENDED SET-UP FOR END FEED APPLICATORS IS POST-FEED WITH ITEM 2119653-1. THE APPLICATOR CAN BE CONFIGURED FOR PRE-FEED WITH ITEM 2119652-1 BUT MAY ENCOUNTER PROBLEMS WITH SOME APPLICATIONS. FEED ISSUES OR TERMINAL JAMMING MAY OCCUR IN THE PRE-FEED CONFIGURATION.
- <sup>12</sup> WHEN ASSEMBLING -6 NON-CRIMP HEIGHT ADJUST APPLICATOR USE SHIM PACK 2119957-2 TO ALIGN APPLICATOR'S MAXIMUM WIRE CRIMP HEIGHT AT NORMAL TERMINATOR SHUT HEIGHT

**\*WARNING**  
 ON INSTALLATION, SET WIRE DISC, ITEM 40 TO LARGEST WIRE SIZE SETTING. USE OF SETTINGS BELOW MINIMUM REQUIRED CRIMP HEIGHT SETTING WILL CAUSE DAMAGE TO CRIMP TOOLING.

-	-	1	-	-	-	2119957-2	APPLICATOR SHIM PACK	260
-	1	-	1	1	1	8-21084-0	O-RING, .676 ID, .070 DIA. MAT.	252
-	-	-	-	1	-	2119640-1	PUSH ROD, AIR FEED	250
-	-	-	-	1	-	2079988-1	BUSHING, LCH5-12, MISUMI	249
-	-	-	-	1	-	2119641-1	FEED CAM, AIR FEED	248
-	1	-	1	1	1	2119798-1	DETENT PIN	247
-	1	-	1	1	1	1-22279-3	SPRING, COMPRESSION	246
-	-	1	-	-	-	2119759-1	RAM, AMP STYLE, END FEED, NON-ADJUST	245
-	1	1	1	1	1	2119082-5	CAM, SNAIL, INSULATION ADJUSTMENT	244
-	1	1	1	1	1	2079764-1	WASHER, WAVE SPRING, CREST-TO-CREST	243
-	1	1	1	1	1	2119083-1	RETAINER, INSULATION DIAL	242
-77	-7	-6	-5	-2	-1	PART NO	DESCRIPTION	ITEM NO

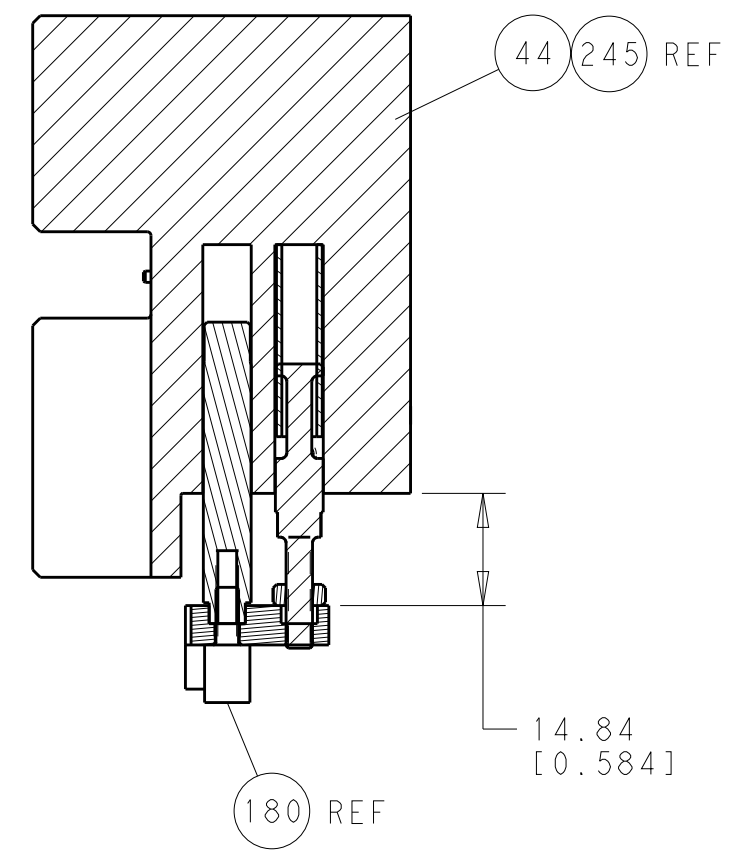
**ATLANTIC VERSION**  
 Shown on sheets 1 of 4 & 2 of 4  
 (Pacific version shown on sheets 3 of 4 & 4 of 4)

SET UP GAUGE	LOC	DIST	REVISIONS					
2119599-2	A	66	P	LTM	DESCRIPTION	DATE	DWN	APVD
			A		RELEASED	08MAY2015	KH	GB

-	-	2	2	-	-	2168400-7	SHCS, LOW HEAD, RoHS, M5 X 10	240
-	-	-	-	-	1	2119580-1	MECHANICAL FEED ASSEMBLY	239
-	-	-	-	-	1	2063440-1	AIR FEED MODULE	238
-	-	1	1	-	-	2119740-2	TAG, IDENTIFICATION	213
-	-	REFREF	-	-	-	1901697-3	FEED FINGER ASSEMBLY, EF	183
-	1	1	1	1	1	1-1752354-5	STANDOFF, HOLD-DOWN	180
-	1	1	1	1	1	6-9931111-6	PIN, SLOTTED SPRING 3.0 X 14.0	177
-	1	1	1	1	1	8-22280-7	SPRING, COMPRESSION	176
-	1	1	1	1	1	1752353-2	GUIDE PIN, HOLDDOWN	175
-	1	1	1	1	1	1901680-2	GUIDE PIN, HOLDDOWN	174
-	-	-	-	2	-	21045-3	RING, RETAIN, EXTERN, 3/16 CRESCENT	172
-	1	1	1	1	1	994969-1	MAGNET, RARE EARTH HIGH ENERGY	166
-	REFREF	REFREF	REFREF	REFREF	REFREF	994970-2	COUNTER, MAGNETIC	164
-	-	-	-	-	1	240638-1	SPRING, FEED FINGER	163
-	-	-	-	-	1	3-23627-7	PIN, RETAIN, GRVD, 3/16 X .854	137
-	REFREF	-	-	-	-	SEE NOTE 4	MEMORY CHIP, PROGRAMMED	135
-	1	1	1	-	-	1633743-1	SERVO FEED LATCH ASM	133
-	1	1	1	1	1	2119955-2	ASSY, LUBRICATOR, END FEED	84
-	1	1	1	1	1	455888-5	SPACER, CRIMPER	82
-	1	1	1	1	1	2119791-5	DEPRESSOR, WIRE	73
-	1	1	1	1	1	2119956-2	DOCUMENTATION PACKAGE	71
-	2	2	2	2	2	2-18032-2	SCR, SET, FLT POINT M3 X 10.0	70
-	1	-	-	-	1	2119740-1	TAG, IDENTIFICATION	67
-	2	2	2	2	2	2168078-1	SCREW, DRIVE, RH, RoHS, 2 x .188	66
-	1	1	1	1	1	1901681-1	HOLDDOWN, TERMINAL	65
-	2	2	2	2	2	2168400-8	SHCS, LOW HEAD, RoHS, M4 X 16	64
-	1	-	-	-	1	2119793-1	LIMITER, ADJUSTMENT BOLT	63
-	3	-	3	3	3	992763-5	SCR, SET, SOC, CONE POINT, M3 x 4.0	62
-	1	1	1	1	1	2079383-4	SCR, BHSC, RoHS (M4 X 8)	60
-	-	-	-	-	1	5-18022-5	SCR, HEX HD CAP, M4 X 6.0	59
-	-	-	-	-	1	2063961-3	FEED FINGER	58
-	3	3	3	3	3	2168400-4	SHCS, LOW HEAD, RoHS, M4 X 8	57
-	2	2	2	2	2	2168083-3	SCR, SKT HD CAP, RoHS, M4 X 12.0	56
-	2	2	2	2	2	5018030-2	NUT, HEX, REG, RoHS, M4	55
-	2	2	2	2	2	5018030-1	NUT, HEX, REG, RoHS, M3	54
-	2	2	2	2	2	986965-8	NUT, LOCK, HEX, TORQUE (M4)	53
-	1	1	1	1	1	1-5018030-0	NUT, HEX, REG, RoHS, M3.5	52
-	-	-	-	-	1	2119792-8	PAWL, EF, AIR	51
-	-	-	-	-	1	18023-9	SCR, SKT HD CAP M4 X 6.0	49
-	-	-	-	-	1	2119652-1	FEED CAM, PRE FEED	48
-	-	-	-	-	1	2119653-1	FEED CAM, POST FEED	47
-	1	1	1	1	1	2119655-5	APPLICATOR BASIC ASSEMBLY, EF	46
-	1	-	-	-	1	2119369-1	RAM, AMP STYLE, END FEED	44
-	1	1	1	1	1	2079383-7	SCR, BHSC, RoHS (M8 X 25)	41
-	1	-	-	-	1	2119645-1	DISC, NUMBERED FA WIRE ADJUSTMENT	40
-	1	-	-	-	1	2119957-1	APPLICATOR SHIM PACK	39
-	1	1	1	1	1	2119644-1	RAM WASHER, PRECISION	38
-	1	1	1	1	1	2119085-1	FA HEAD, ATLANTIC STYLE	37
-	1	-	-	-	1	2119092-1	BOLT, ADJUSTMENT	35
-	7	7	7	7	7	1-18028-2	WASHER, FLAT, REG M4	33
-	2	2	2	2	2	2168083-9	SCR, SKT HD CAP, RoHS, M4 X 20	31
-	2	2	2	2	2	1-2168083-0	SCR, SKT HD CAP, RoHS, M4 X 10	29
-	1	1	1	1	1	240639-1	STRIPPER (MACHINING)	27
-	2	2	2	2	2	1320906-1	STUD, THREADED	25
-	1	1	1	1	1	1752371-5	PLATE, STRIP GUIDE	24
-	1	1	1	1	1	240825-9	PLATE, STRIP HOLD DOWN	23
-	2	2	2	2	2	2-22281-3	SPRING, COMPRESSION	22
-	1	1	1	1	1	1752373-4	DRAG	20
-	2	2	2	2	2	1901259-5	GUIDE, LOWER STRIP	18
-	4	4	4	4	4	1-2079383-1	SCR, BHSC, RoHS (M6 X 12)	17
-	1	1	1	1	1	2-240641-4	SPACER	16
-	1	1	1	1	1	1752360-1	SPACER, HOLD-DOWN	13
-	1	1	1	1	1	240644-1	PLATE, REAR SHEAR	11
-	-	-	-	-	-	-	-	10
-	1	1	1	1	1	690495-6	PLATE, FRONT SHEAR	9
1	1	1	1	1	1	1-133215-3	ANVIL, COMBINATION	8
-	1	1	1	1	1	1-2217206-0	BLADE, SLUG	7
-	-	-	-	-	-	-	-	6
-	1	1	1	1	1	1-240641-6	SPACER	5
-	1	1	1	1	1	3-238009-7	BLOCK, FL CRIMPER SPACER	4
1	1	1	1	1	1	7-2119582-3	CRIMPER, INSULATION F PREMIUM	3
-	1	1	1	1	1	455888-6	SPACER, CRIMPER	2
1	1	1	1	1	1	3-456404-9	CRIMPER, WIRE PREMIUM	1
-77	-7	-6	-5	-2	-1	PART NO	DESCRIPTION	ITEM NO

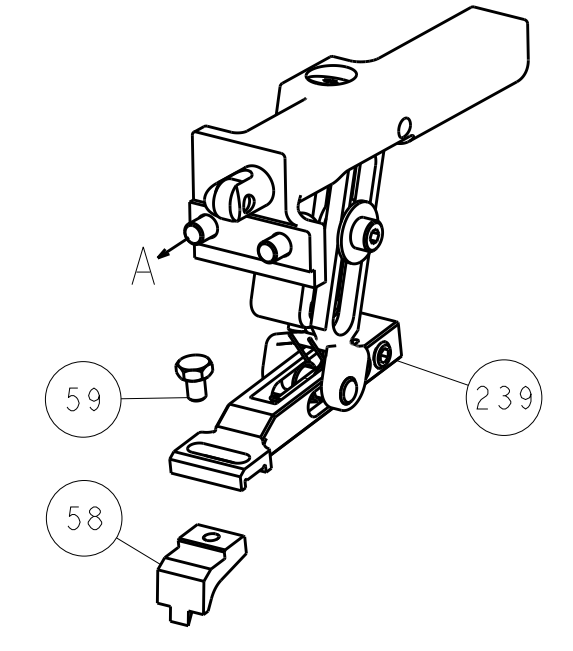
DIMENSIONS:		TOLERANCES UNLESS OTHERWISE SPECIFIED:		DWG		REV	
mm	0 PLC ±.5	1 PLC ±.3	2 PLC ±.2	3 PLC ±.1	4 PLC ±.05	5 PLC ±.02	6 PLC ±.01
	ANGLES ±.0001						
MATERIAL	FINISH	WEIGHT	SCALE	DATE	BY	CHKD	APPVD
			1:1	23SEP2014	L. HUANG	L. HUANG	L. ZHANG
Customer Accessible Production Drawing				SCALE	SHEET	OF	REV
				1:1	1	4	A

LOC		DIST		REVISIONS			
A	66	P	LTM	DESCRIPTION	DATE	OWN	APVD
				SEE SHEET 1			

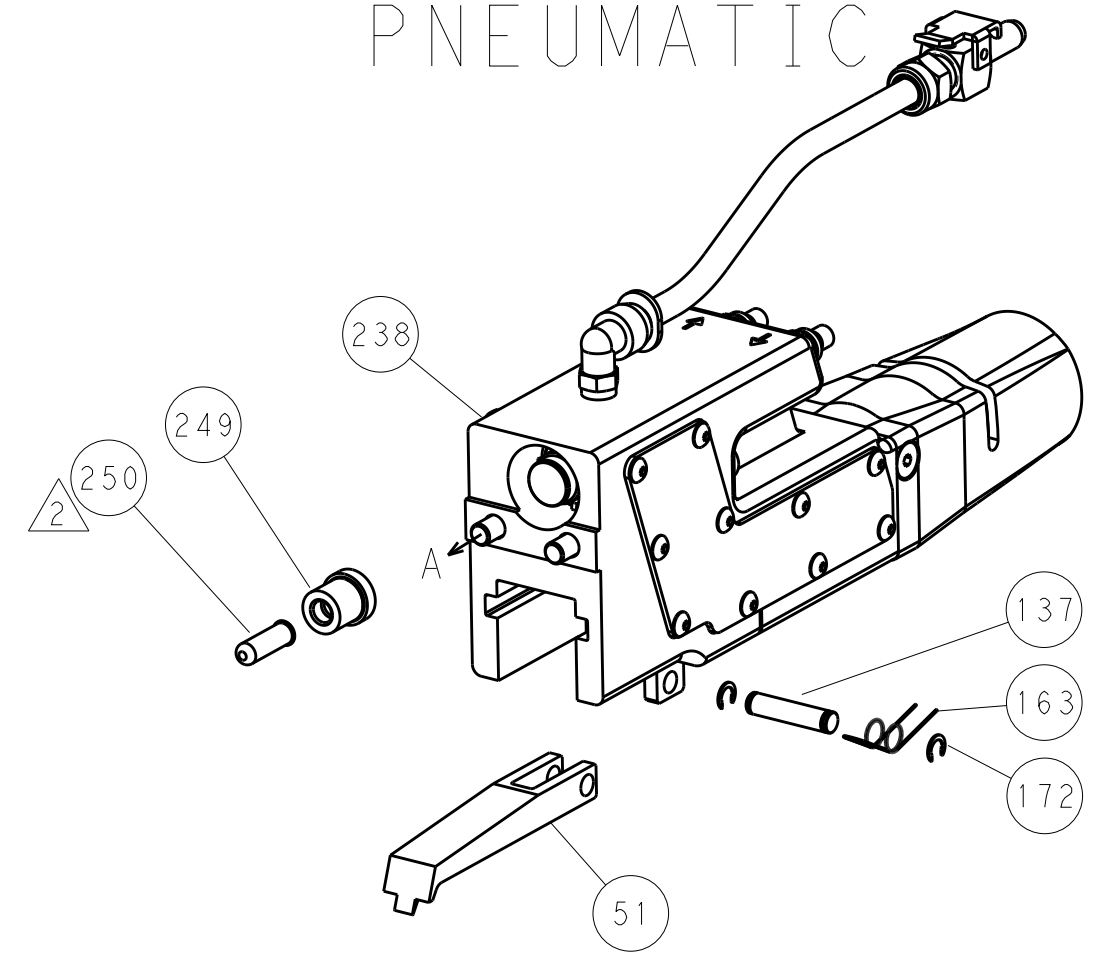


HOLDDOWN SET-UP

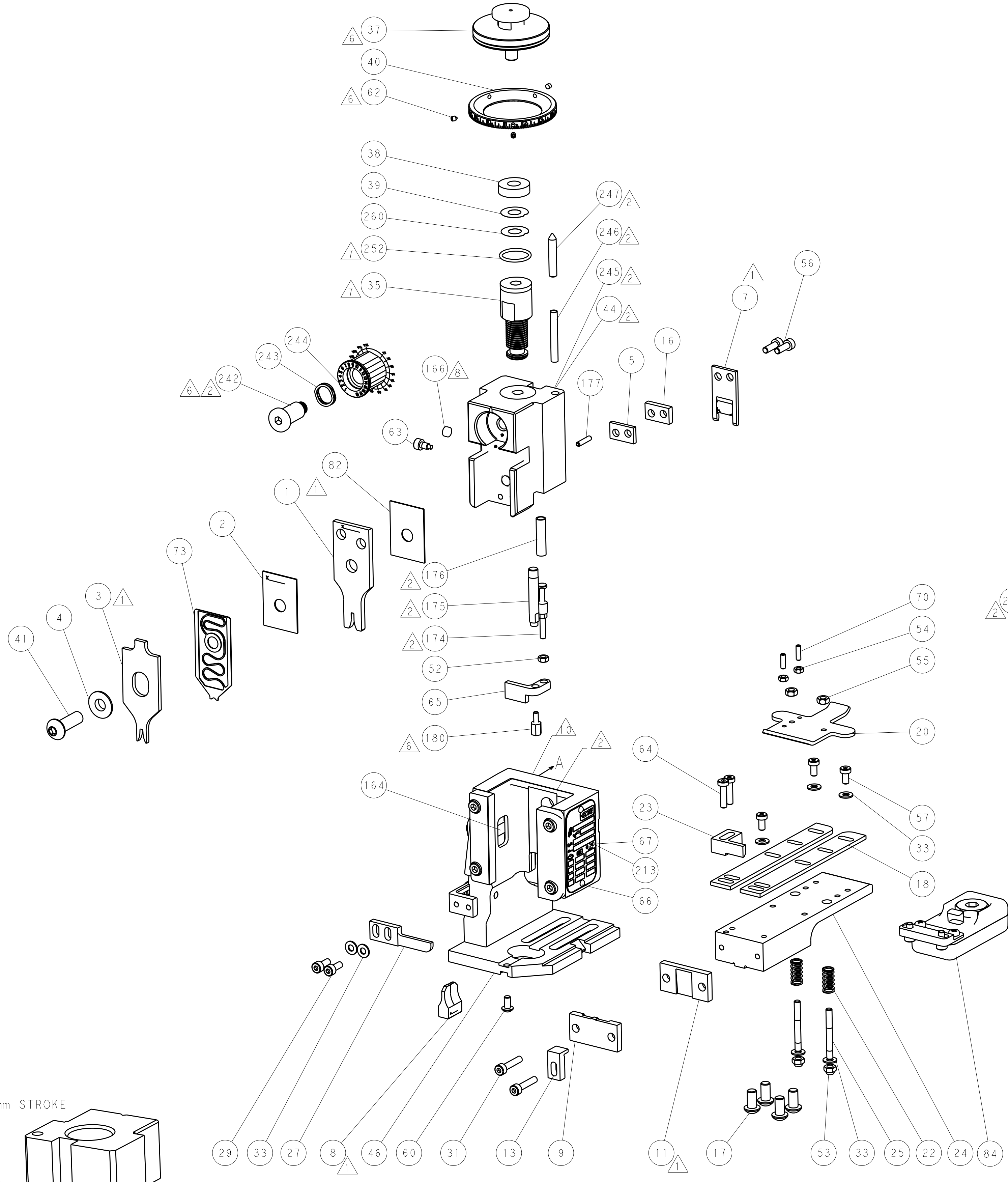
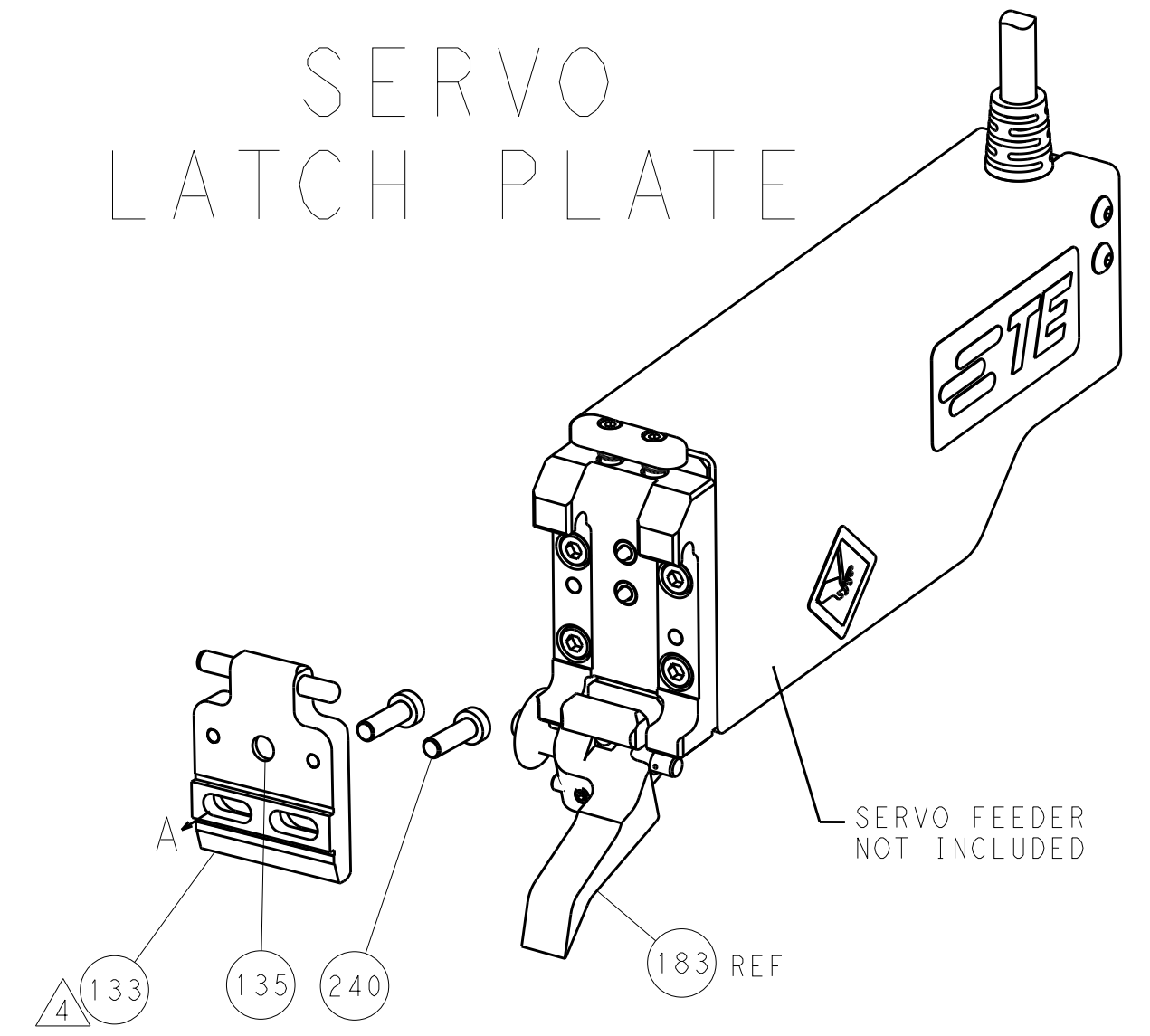
FEED TYPE  
MECHANICAL



PNEUMATIC



SERVO  
LATCH PLATE



CAM POSITIONS



ATLANTIC VERSION  
 Shown on sheets 1 of 4 & 2 of 4  
 (Pacific version shown on sheets 3 of 4 & 4 of 4)

DIMENSIONS:		TOLERANCES UNLESS OTHERWISE SPECIFIED:		OWN: H. HUANG 23SEP2014		TE Connectivity	
mm	0 PLC ±0.5	1 PLC ±0.5	2 PLC ±0.13	3 PLC ±0.013	4 PLC ±0.001	CHK: L. ZHANG 23SEP2014	Harrisburg, PA 17105-3608
MATERIAL:		FINISH:		APVD: H. GUO 23SEP2014		NAME: Ocean End Feed Applicator	
				PRODUCT SPEC:		SIZE: CAGE CODE DRAWING NO: A11 00779 ©=2150482	
				APPLICATION SPEC:		RESTRICTED TO:	
				WEIGHT:		Customer Accessible Production Drawing	
				SCALE: 1:1		SHEET 2 OF 4 REV A	

PACIFIC VERSION TERMINATOR INTERFACE ADAPTER	PART NUMBER	REVISION	DESCRIPTION	FEED TYPE	APPLICATOR STYLE CONVERSION CHART						
					CONVERT TO	PART NUMBERS REQUIRED					
	2-2150482-1	A	FINE CRIMP HEIGHT ADJUST	MECHANICAL	PNEUMATIC FEED	2119950-1	2119792-8	-	2119641-2	-	2063440-1
					SERVO LATCH PLATE	2119951-1	1901697-1	8-2150482-5	-	2168400-7 (QUANTITY 2)	
					SMART APPLICATOR	2161326-1	-	8-2150482-4	-	-	
	2-2150482-2	A	FINE CRIMP HEIGHT ADJUST	PNEUMATIC	MECHANICAL FEED	2119949-1	2063961-1	5-18022-5	2119653-2	-	-
					SERVO LATCH PLATE	2119951-1	1901697-1	8-2150482-5	-	2168400-7 (QUANTITY 2)	
					SMART APPLICATOR	2161326-1	-	8-2150482-4	-	-	
	2-2150482-5	A	FINE CRIMP HEIGHT ADJUST	SERVO LATCH PLATE	MECHANICAL FEED	2119949-1	2063961-1	5-18022-5	2119653-2	-	-
					PNEUMATIC FEED	2119950-1	2119792-8	-	2119641-2	-	2063440-1
	2-2150482-7	A	FINE CRIMP HEIGHT ADJUST	NONE	-	-	-	-	-	-	-
	7-2150482-7	A	CRIMP TOOLING KIT	-	-	-	-	-	-	-	-

APPLICATOR DATA		
CRIMP SIZE	TYPE	
WIRE 1.78 mm (.070)	F	
INSUL 2.29 mm (.090)	F	
APPLICATOR INSTRUCTIONS 408-10390		

TERMINAL DATA: TE TERMINAL		TE CRIMP SPECIFICATION
TERMINAL NAME: RECEPTACLE, FASTON, .250 SERIES		
WIRE STRIP LENGTH 4.40-5.16 mm (.173-.203 IN)		INSULATION DIAMETER RANGE Ø0.76-1.78 mm (.030-.070 IN)
TERMINAL APPLICATION SPECIFICATION 114-2036		
TERMINALS APPLIED		
TE TERMINAL 61368-1	TE TERMINAL 61368-3	

WIRE SIZE	CRIMP HEIGHT mm [INCH]	CRIMP HEIGHT REFERENCE SETTING
20 AWG OR 0.50mm2	1.30 +/- 0.05 [.051 +/- .002]	8.4
22 AWG OR 0.35mm2	1.24 +/- 0.05 [.049 +/- .002]	9.2
0.25mm2	1.19 +/- 0.05 [.047 +/- .002]	9.5
24 AWG OR 0.21mm2	1.17 +/- 0.05 [.046 +/- .002]	9.6

- RECOMMENDED SPARE PARTS
- GREASE BEARING SURFACES LIGHTLY
- LUBRICATE DAILY PER THE APPLICATOR INSTRUCTION SHEET SUPPLIED WITH THE APPLICATOR.
- APPLICATOR SPECIFIC DATA TO BE ENTERED INTO BLANK MEMORY CHIP AT ASSEMBLY. SEE BELOW FOR PART NUMBER:  
 MECHANICAL FEED WITH "SMART APPLICATOR" CONVERSION: 8-2150482-4  
 PNEUMATIC FEED WITH "SMART APPLICATOR" CONVERSION: 8-2150482-4  
 SERVO FEED WITH "FINE CRIMP HEIGHT ADJUST": 8-2150482-5
- ADJUSTMENT OF THE STRIPPER MAY BE REQUIRED WHEN MOVING THE APPLICATOR BETWEEN BENCH AND LEADMAKER APPLICATIONS.
- APPLY PART NUMBER 1-23419-5 LOCTITE TO THREADS OF ITEMS 62 & 180. APPLY PART NUMBER 2-23419-6 LOCTITE TO THREADS OF ITEM 242.
- GREASE THREADS, GROOVE AND O-RING ON ITEMS 139 & 153.
- MAGNET, ITEM 166 MUST BE ORIENTED CORRECTLY IN ORDER TO PROPERLY ACTUATE THE COUNTER.
- CRIMP HEIGHT REFERENCE SETTING WAS THE SETTING USED WHEN THE APPLICATOR WAS QUALIFIED AT THE FACTORY. ADJUSTMENT MAY BE NECESSARY WHEN RUNNING APPLICATOR IN THE FIELD.
- SPARE FEED CAM STORAGE LOCATION REFER TO INSTRUCTION SHEET FOR ADDITIONAL INFORMATION.
- THE RECOMMENDED SET-UP FOR END FEED APPLICATORS IS POST-FEED WITH ITEM 2119653-1. THE APPLICATOR CAN BE CONFIGURED FOR PRE-FEED WITH ITEM 2119652-1 BUT MAY ENCOUNTER PROBLEMS WITH SOME APPLICATIONS. FEED ISSUES OR TERMINAL JAMMING MAY OCCUR IN THE PRE-FEED CONFIGURATION.

**\*WARNING**  
 ON INSTALLATION, SET WIRE DISC, ITEM 40 TO LARGEST WIRE SIZE SETTING. USE OF SETTINGS BELOW MINIMUM REQUIRED CRIMP HEIGHT SETTING WILL CAUSE DAMAGE TO CRIMP TOOLING.

ITEM NO	DESCRIPTION	ITEM NO
- 1 1 1 1	2119782-1 FINE ADJUST HEAD ASM, PACIFIC STYLE	251
- - - 1 -	2119640-1 PUSH ROD, AIR FEED	250
- - - 1 -	2079988-1 BUSHING, LCH5-12, MISUMI	249
- 1 1 1 1	1-22279-3 SPRING, COMPRESSION	246
- 1 1 1 1	2119082-5 CAM, SNAIL, INSULATION ADJUSTMENT	244
- 1 1 1 1	2079764-1 WASHER, WAVE SPRING, CREST-TO-CREST	243
- 1 1 1 1	2119083-1 RETAINER, INSULATION DIAL	242
- - 2 - -	2168400-7 SHCS, LOW HEAD, RoHS, M5 X 10	240
- - - - 1	2119580-1 MECHANICAL FEED ASSEMBLY	239
-77-27-25-22-21	PART NO	DESCRIPTION

**PACIFIC VERSION**  
 Shown on sheets 3 of 4 & 4 of 4  
 (Atlantic version shown on sheets 1 of 4 & 2 of 4)

SET UP GAUGE	LOC	DIST	REVISIONS			
2119599-2	A	66	REV	DATE	BY	APPV
-	-	-	1	-	-	-
-	-	-	2	-	-	-

REV	DATE	BY	APPV	DESCRIPTION	DATE	BY	APPV
-	-	-	-	SEE SHEET 1	-	-	-
-	-	-	-	2063440-1 AIR FEED MODULE	-	-	238
-	-	-	-	2119740-2 TAG, IDENTIFICATION	-	-	213
-	4	1	4	2079383-9 SCR, BHSC, RoHS (M6 X 20)	-	-	186
-	-	REF	-	1901697-3 FEED FINGER ASSEMBLY, EF	-	-	183
-	1	1	1	1-1752354-5 STANDOFF, HOLD-DOWN	-	-	180
-	1	1	1	6-993111-6 PIN, SLOTTED SPRING 3.0 X 14.0	-	-	177
-	1	1	1	8-22280-7 SPRING, COMPRESSION	-	-	176
-	1	1	1	1752353-2 GUIDE PIN, HOLDDOWN	-	-	175
-	1	1	1	1901680-2 GUIDE PIN, HOLDDOWN	-	-	174
-	-	-	2	21045-3 RING, RETAIN, EXTERN, 3/16 CRESCENT	-	-	172
-	1	1	1	994969-1 MAGNET, RARE EARTH HIGH ENERGY	-	-	166
-	REF	REF	REF	994970-2 COUNTER, MAGNETIC	-	-	164
-	-	-	1	240638-1 SPRING, FEED FINGER	-	-	163
-	1	1	1	8-21084-1 O-RING, .801 ID, .070 DIA. MAT.	-	-	153
-	-	-	1	2119641-2 FEED CAM, AIR FEED	-	-	152
-	1	1	1	2119798-2 DETENT PIN	-	-	145
-	1	1	1	2079383-8 SCR, BHSC, RoHS (M4 X 16)	-	-	144
-	-	-	1	2119653-2 FEED CAM, POST FEED	-	-	142
-	1	1	1	2119655-6 APPLICATOR BASIC ASSEMBLY, EF	-	-	141
-	1	1	1	2119651-1 RAM, ASIAN STYLE, END FEED	-	-	140
-	1	1	1	2119092-2 BOLT, ADJUSTMENT	-	-	139
-	-	-	1	3-23627-7 PIN, RETAIN, GRVD, 3/16 X .854	-	-	137
-	REF	REF	REF	SEE NOTE 4 MEMORY CHIP, PROGRAMMED	-	-	135
-	-	-	1	1633743-1 SERVO FEED LATCH ASM	-	-	133
-	1	1	1	2119955-2 ASSY, LUBRICATOR, END FEED	-	-	84
-	1	1	1	455888-5 SPACER, CRIMPER	-	-	82
-	1	1	1	2119791-5 DEPRESSOR, WIRE	-	-	73
-	1	1	1	2119956-2 DOCUMENTATION PACKAGE	-	-	71
-	2	2	2	2-18032-2 SCR, SET, FLT POINT M3 X 10.0	-	-	70
-	1	-	1	2119740-1 TAG, IDENTIFICATION	-	-	67
-	2	2	2	2168078-1 SCREW, DRIVE, RH, RoHS, 2 x .188	-	-	66
-	1	1	1	1901681-1 HOLDDOWN, TERMINAL	-	-	65
-	2	2	2	2168400-8 SHCS, LOW HEAD, RoHS, M4 X 16	-	-	64
-	1	1	1	2119793-1 LIMITER, ADJUSTMENT BOLT	-	-	63
-	3	3	3	992763-5 SCR, SET, SOC, CONE POINT, M3 x 4.0	-	-	62
-	-	-	1	5-18022-5 SCR, HEX HD CAP, M4 X 6.0	-	-	59
-	-	-	1	2063961-3 FEED FINGER	-	-	58
-	3	3	3	2168400-4 SHCS, LOW HEAD, RoHS, M4 X 8	-	-	57
-	2	2	2	2168083-3 SCR, SKT HD CAP, RoHS, M4 X 12.0	-	-	56
-	2	2	2	5018030-2 NUT, HEX, REG, RoHS, M4	-	-	55
-	2	2	2	5018030-1 NUT, HEX, REG, RoHS, M3	-	-	54
-	2	2	2	986965-8 NUT, LOCK, HEX, TORQUE (M4)	-	-	53
-	1	1	1	1-5018030-0 NUT, HEX, REG, RoHS, M3.5	-	-	52
-	-	-	1	2119792-8 PAWL, EF, AIR	-	-	51
-	-	-	1	18023-9 SCR, SKT HD CAP M4 X 6.0	-	-	49
-	-	-	1	2119652-1 FEED CAM, PRE FEED	-	-	48
-	1	1	1	2079383-7 SCR, BHSC, RoHS (M8 X 25)	-	-	41
-	1	1	1	2119645-1 DISC, NUMBERED FA WIRE ADJUSTMENT	-	-	40
-	1	1	1	2119957-1 APPLICATOR SHIM PACK	-	-	39
-	1	1	1	2119644-1 RAM WASHER, PRECISION	-	-	38
-	7	7	7	1-18028-2 WASHER, FLAT, REG M4	-	-	33
-	2	2	2	2168083-9 SCR, SKT HD CAP, RoHS, M4 X 20	-	-	31
-	2	2	2	1-2168083-0 SCR, SKT HD CAP, RoHS, M4 X 10	-	-	29
-	1	1	1	240639-1 STRIPPER (MACHINING)	-	-	27
-	2	2	2	1320906-1 STUD, THREADED	-	-	25
-	1	1	1	1752371-5 PLATE, STRIP GUIDE	-	-	24
-	1	1	1	240825-9 PLATE, STRIP HOLD DOWN	-	-	23
-	2	2	2	2-22281-3 SPRING, COMPRESSION	-	-	22
-	1	1	1	1752373-4 DRAG	-	-	20
-	2	2	2	1901259-5 GUIDE, LOWER STRIP	-	-	18
-	1	1	1	2-240641-4 SPACER	-	-	16
-	1	1	1	1752360-1 SPACER, HOLD-DOWN	-	-	13
-	1	1	1	240644-1 PLATE, REAR SHEAR	-	-	11
-	-	-	-	-	-	-	10
-	1	1	1	690495-6 PLATE, FRONT SHEAR	-	-	9
-	1	1	1	1-133215-3 ANVIL, COMBINATION	-	-	8
-	1	1	1	1-2217206-0 BLADE, SLUG	-	-	7
-	-	-	-	-	-	-	6
-	1	1	1	1-240641-6 SPACER	-	-	5
-	1	1	1	3-238009-7 BLOCK, FL CRIMPER SPACER	-	-	4
-	1	1	1	7-2119582-3 CRIMPER, INSULATION F PREMIUM	-	-	3
-	1	1	1	455888-6 SPACER, CRIMPER	-	-	2
-	1	1	1	3-456404-9 CRIMPER, WIRE PREMIUM	-	-	1
-77-27-25-22-21	PART NO	DESCRIPTION	ITEM NO				

DIMENSIONS: mm		TOLERANCES UNLESS OTHERWISE SPECIFIED:		DWG: H. HUANG 23SEP2014		CHK: L. ZHANG 23SEP2014		APVD: H. GUO 23SEP2014		NAME: Ocean End Feed Applicator	
0 PLC ±.5		1 PLC ±.13		2 PLC ±.13		3 PLC ±.13		4 PLC ±.13		SIZE: A	
ANGLES ±.0001		FINISH		WEIGHT		SCALE: 1:1		SHEET: 3 OF 4		REV: A	
MATERIAL		FINISH		WEIGHT		SCALE: 1:1		SHEET: 3 OF 4		REV: A	



