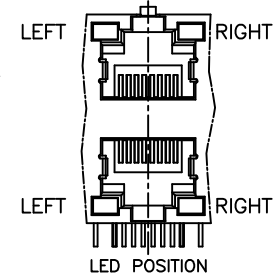
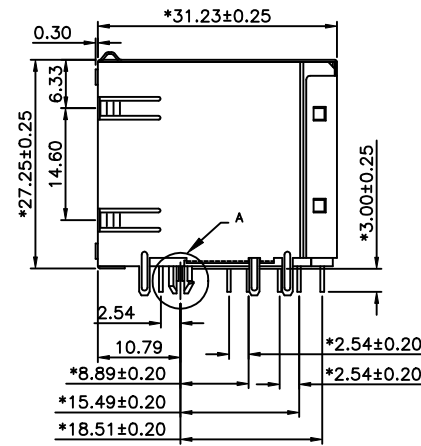
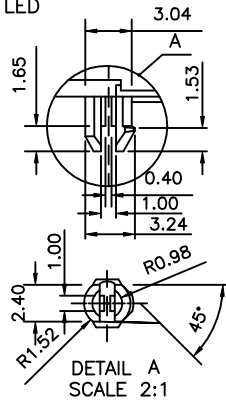
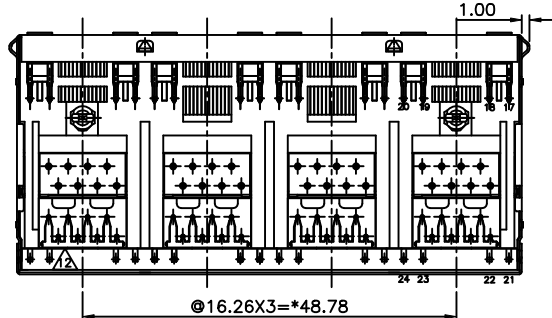
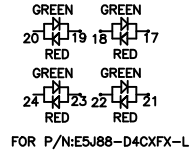
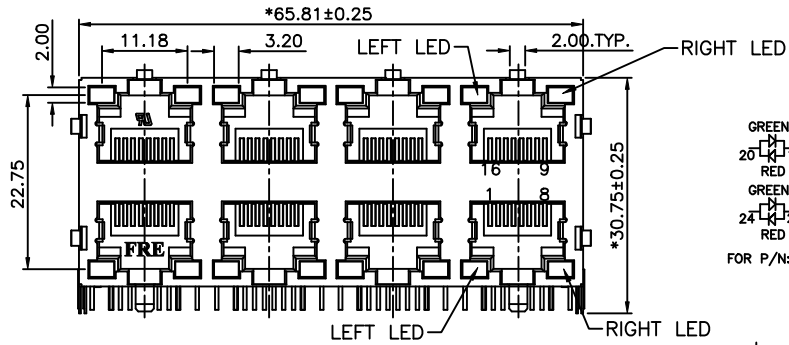


REVISION RECORD				
REV	ECO	DESCRIPTION	DRFT	CHKD



NOTES:

ELECTRICAL:

- VOLTAGE RATING : 125 VAC RMS.
- CURRENT RATING : 1.5 AMP.
- CONTACT RESISTANCE : 50 MILLIOHMS MAX.
- INSULATION RESISTANCE: 1000 MEGOHMS MIN @ 500 VDC.
- DIELECTRIC STRENGTH : 1000 VAC RMS 60Hz, 1MIN.

MECHANICAL:

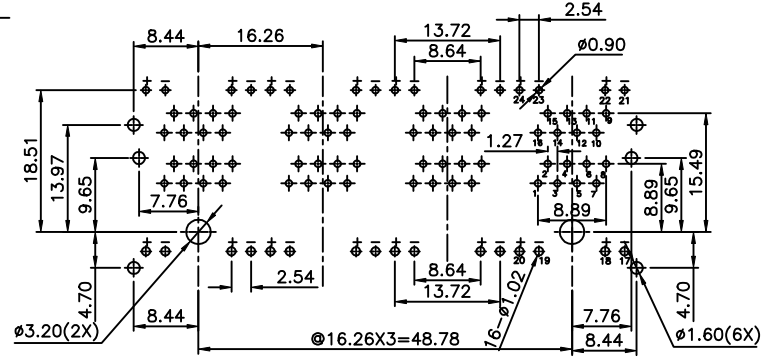
- HOUSING MATERIAL : GLASS FILLED POLYESTER UL94V-0.
- CONTACT MATERIAL : PHOSPHOR BRONZE $\phi 0.46$ mm.
- PLATING : 1: CONTACT AREA- SELECTIVE GOLD PLATING.
2: TAILS- 150u" TIN-LEAD MIN OVER 50u" NICKEL OR TIN OVER NICKEL.
- OPERATING LIFE : 750 CYCLES MIN.
- PCB RETENTION PRE-SOLDER : 1 LB MIN.
- PCB RETENTION POST-SOLDER: 10 LBS MIN.
- LED COLOR : GREEN

ENVIRONMENTAL:

- STORAGE : -40°C TO +85°C.
 - OPERATION: -40°C TO +85°C.
 - WAVE SOLDERING TEMPERATURE: 230~250°C(3~5 SECONDS)
- MATES WITH MODULAR PLUG CONFORMING TO FCC PART 68, SUBPART F.

ROHS PART NUMBER: E5J88-X4CXFX-L

- A-LEFT LED:GREEN, RIGHT LED:GREEN
 B-LEFT LED:GREEN, RIGHT LED:ORANGE
 C-LEFT LED:GREEN, RIGHT LED:YELLOW
 L-LEFT LED:YELLOW, RIGHT LED:GREEN
 F-LEFT LED:ORANGE, RIGHT LED:GREEN
 D-LEFT LED:G+R, RIGHT LED:G+R
- Gold Thickness:
 1- 3u" 2- 6u" 3-15u"
 4-30u" 5-50u"
- 0- W/O "FRE" LOGO
 2- W/ "FRE" LOGO



PC Board Layout
Component Side Shown

DETACHED LISTS	MM (INCH)	DFTO YANGLAN	DATE 10/18/05'	FULL RISE ELECTRONIC CO., LTD	
	TOLERANCES EXCEPT AS NOTED	CHKD:ME	DATE:2005/10/18		
	MM	MFO	DATE	TITLE RJ45(LED) STACKED GANGED JACK, 2X4	
	.0 ±0.20 ±	APPLY:LUH:ME	DATE:2005/10/18		
.00 ±0.15 ±	MATERIAL :		DRAWING NO. GE5J3001-LC		
.000 ±0.075 ±	QT'Y :		/PART NO. SEE NOTE		
ANGLES ±	FINISH :		SCALE : 5:3	SIZE A3	REV 0
THIRD ANGLE PROJECTION	DO NOT SCALE DRAWING		SHEET 1	OF 1	10/17/05'