

Housing - HC-HPR-B16-SHFH-2SSM40-EMR-BK - 1411886

Please be informed that the data shown in this PDF Document is generated from our Online Catalog. Please find the complete data in the user's documentation. Our General Terms of Use for Downloads are valid (<http://phoenixcontact.com/download>)




Box mounting bases B16, For screw locking, material: Aluminum die-cast, cable outlets: 2, lateral, height: 111 mm, cable gland: none, support sleeve: no, 2x M40, protective cover: no, Railway applications, for increased environmental and EMC requirements, Series HPR

Why buy this product

- Vibration and shock: IEC 61373/EN 50155, category 1, class 1B

Key Commercial Data

Packing unit	1 STK
GTIN	 4 046356 944540
GTIN	4046356944540

Technical data

Dimensions

Height	111 mm
Width	80 mm
Length	189 mm

Ambient conditions

Degree of protection of housing (IP)	IP66
	IP68 (0.5 bar / 24 h)
	IP69K (ISO 20653:2013-02)
Ambient temperature (operation)	-40 °C ... 125 °C

General

Note	For contact inserts HC-B16, BB32, BBB40, D40, DD72, HS6, M, K
Size	B16
Housing type	Box mounting bases
Color	black
Locking type	For screw locking

Housing - HC-HPR-B16-SHFH-2SSM40-EMR-BK - 1411886

Technical data

General

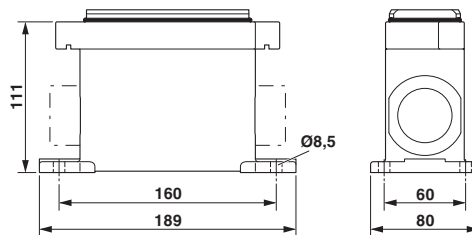
No. of cable outlets	2
Cable outlet	lateral
Screw connection	none
Type of the screw connection	2x M40
Protective cover	no
Housing material	Aluminum die-cast
Housing surface material	Powder-coated, black
Seal material	NBR

Environmental Product Compliance

China RoHS	Environmentally Friendly Use Period = 50
	For details about hazardous substances go to tab "Downloads", Category "Manufacturer's declaration"

Drawings

Dimensional drawing



Dimensional drawing

Approvals

Approvals

Approvals
GL / EAC
Ex Approvals

Approval details

GL		http://exchange.dnv.com/tari/	6196614 HH
----	--	---	------------

Housing - HC-HPR-B16-SHFH-2SSM40-EMR-BK - 1411886

Approvals

EAC



RU C-
DE.AI30.B.01102

Phoenix Contact 2018 © - all rights reserved
<http://www.phoenixcontact.com>

PHOENIX CONTACT GmbH & Co. KG
Flachsmarktstr. 8
32825 Blomberg
Germany
Tel. +49 5235 300
Fax +49 5235 3 41200
<http://www.phoenixcontact.com>