



Dual Lock™ Industrial Fasteners

SJ 3755

Technical Data

July, 1995

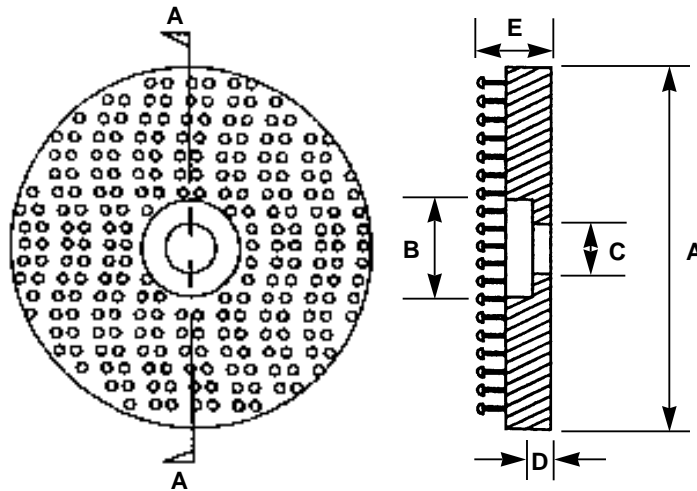
General Description

SJ 3755 Dual Lock Fastener is a fastener having a Type 250 stem pattern. When two pieces of Dual Lock Fasteners are pressed together, the mushroom heads interlock with one another to form a secure fastening attachment. To open simply pull apart. SJ 3755 fastener is a round, 1¹/₈ in. (28.5 mm) diameter fastener with a counter-sunk center hole. This allows easy attachment to many rigid substrates using a pan-head screw, pop rivet, etc. The head of the screw or rivet must be recessed below the bottom of the mushroom stems to allow proper engagement of the mushroom heads. For optimum performance, SJ 3755 fastener should be mated with Type 250 or Type 400 Dual Lock fasteners.

Typical Physical Properties and Performance Characteristics

Note: The following technical information and data should be considered representative or typical only and should not be used for specification purposes.

SJ 3755 fastener is composed of polyolefin plastic and is black in color. Weight of one piece is 2 grams. Operating temperature range is -20°F to 200°F (-29°C to 93°C).



	DIM A	DIM B	DIM C	DIM D	DIM E
Inches:	1.12	0.31	0.16	0.06	0.24
Tolerance / Inches ±:	.030	.010	.010	.015	.020
Millimeters:	28.5	7.9	4.1	1.5	6.0
Tolerance / mm ±:	0.8	0.25	0.25	0.38	0.5

Nominal Engaged Thickness - Inches (mm)

	SJ 3440	SJ 3441	SJ 3540	SJ 3541	SJ 3550	SJ 3551	SJ 3755 Fastener
SJ 3755:	0.27 (6.8)	0.27 (6.8)	0.31 (7.8)	0.31 (7.8)	0.31 (7.8)	0.31 (7.8)	0.42 (10.7)

Dual Lock™ Industrial Fasteners

SJ 3755

Typical Physical Properties and Performance Characteristics (continued)

Note: The following technical information and data should be considered representative or typical only and should not be used for specification purposes.


Dual Lock products to mate with SJ 3755 fastener:


For optimum performance, SJ 3755 Type 250 Dual Lock fastener should be mated with Type 250 or Type 400 Dual Lock products. Suggested Dual Lock products to mate with SJ 3755 fastener are listed below:

	Plainbacked	General Purpose psa	VHB™ Acrylic psa
Type 250:	SJ 3440	SJ 3540	SJ 3550
Type 400:	SJ 3441	SJ 3541	SJ 3551

Typical Performance Characteristics	Type 250 mated to Type 250	Type 400 mated to Type 250
-------------------------------------	----------------------------	----------------------------

Dynamic Tensile Disengagement Strength, lbs/sq inch (kPa):		37 (256)	48 (331)
------------------------------------------------------------	------------------------------------------------------------------------------------	----------	----------

Static Tensile Holding Power, lbs/sq inch (grams/25.4 mm x 25.4 mm): (Will hold listed weight for 10,000 minutes across a temperature range of -20°F to 200°F (-29°C to 93°C))		1.1 (500)	1.1 (500)
-----------------------------------------------------------------------------------------------------------------------------------------------------------------------------------	------------------------------------------------------------------------------------	-----------	-----------

Static Shear Holding Power, lbs/sq inch (grams/25.4 mm x 25.4 mm): (Will hold listed weight for 10,000 minutes across a temperature range of -20°F to 200°F (-29°C to 93°C))		1.1 (500)	1.1 (500)
---------------------------------------------------------------------------------------------------------------------------------------------------------------------------------	-------------------------------------------------------------------------------------	-----------	-----------

Note: In long term static load applications, conditions such as temperature variation, jarring, vibration, etc. can affect long term performance. The user should design the amount of fastening area based on the specific conditions in the application. Four square inches of fastening area per pound of static load is suggested as a starting point for such evaluations.

For Additional Information

To request additional product information or to arrange for sales assistance, call toll free 1-800-362-3550. Address correspondence to: 3M Bonding Systems Division, 3M Center, Building 220-7E-01, St. Paul, MN 55144-1000. Our fax number is 651-733-9175. In Canada, phone: 1-800-364-3577. In Puerto Rico, phone: 1-809-750-3000. In Mexico, phone: 5-728-2180.

Important Notice

3M MAKES NO WARRANTIES, EXPRESS OR IMPLIED, INCLUDING, BUT NOT LIMITED TO, ANY IMPLIED WARRANTY OF MERCHANTABILITY OR FITNESS FOR A PARTICULAR PURPOSE. User is responsible for determining whether the 3M product is fit for a particular purpose and suitable for user's method of application. Please remember that many factors can affect the use and performance of a 3M product in a particular application. The materials to be bonded with the product, the surface preparation of those materials, the product selected for use, the conditions in which the product is used, and the time and environmental conditions in which the product is expected to perform are among the many factors that can affect the use and performance of a 3M product. Given the variety of factors that can affect the use and performance of a 3M product, some of which are uniquely within the user's knowledge and control, it is essential that the user evaluate the 3M product to determine whether it is fit for a particular purpose and suitable for the user's method of application.

Limitation of Remedies and Liability

If the 3M product is proved to be defective, THE EXCLUSIVE REMEDY, AT 3M'S OPTION, SHALL BE TO REFUND THE PURCHASE PRICE OF OR TO REPAIR OR REPLACE THE DEFECTIVE 3M PRODUCT. 3M shall not otherwise be liable for loss or damages, whether direct, indirect, special, incidental, or consequential, regardless of the legal theory asserted, including negligence, warranty, or strict liability.

ISO 9002

This Bonding Systems Division product was manufactured under a 3M quality system registered to ISO 9002 standards.

3M

Bonding Systems Division
3M Center, Building 220-7E-01
St. Paul, MN 55144-1000



Recycled Paper
40% pre-consumer
10% post-consumer

Printed in U.S.A.
©3M 1995 70-0706-5916-7