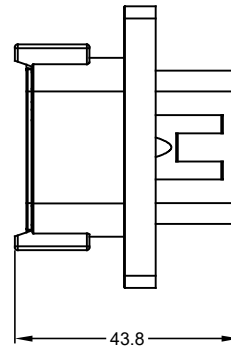
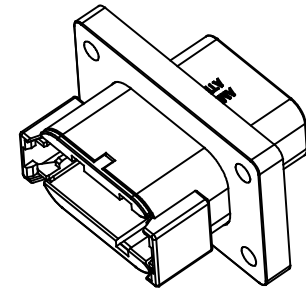
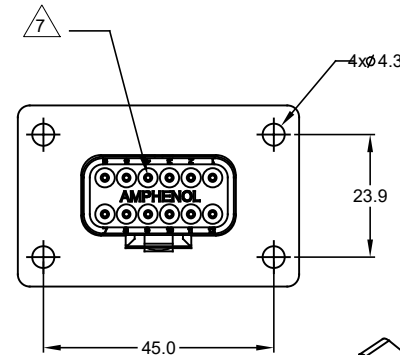
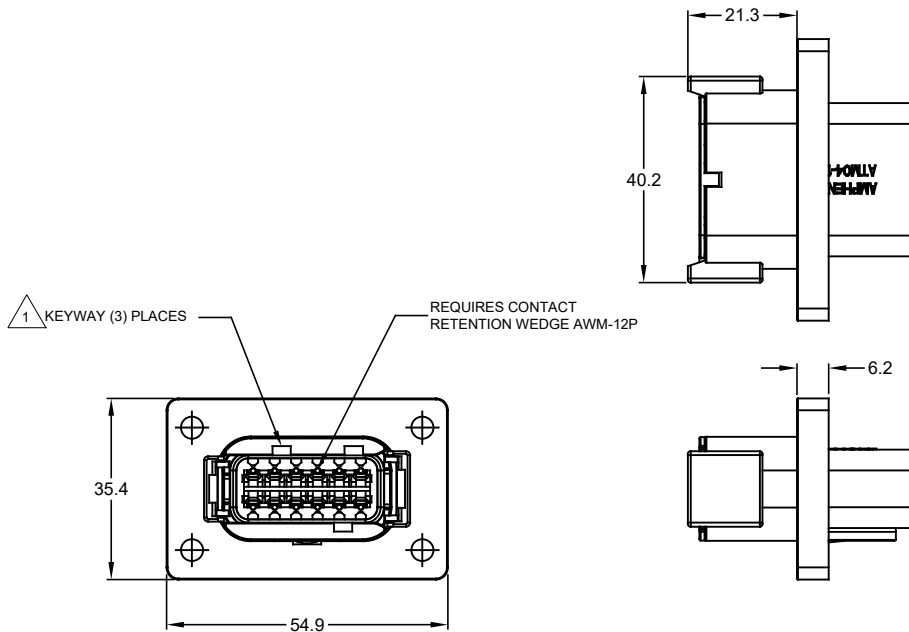


REVISIONS					
REV	ECO	DESCRIPTION	DATE	BY	APPR
A1	--	RELEASE NUMBER	20/NOV/17	ROOKIE	TOMMY
A2	C0866S	UPDATE DRAWING	14/MAY/18	ROOKIE	TOMMY



NOTES: UNLESS OTHERWISE SPECIFIED

1 SEE SHEET 2 FOR KEY ARRANGEMENTS AND COLORS.

2. MATERIAL:
HOUSING: THERMOPLASTIC
SEAL: SILICONE RUBBER

3. MODIFICATIONS: FLANGE

4. SPECIFICATIONS:
4.1 CURRENT RATING: 7.5 AMPS
4.2 OPERATING TEMPERATURE: -55°C TO +125°C.
4.3 DIELECTRIC WITHSTANDING VOLTAGE: LESS THAN 2 MILLIAMPS CURRENT LEAKAGE @ 1500 VOLTS AC.
4.4 INSULATION RESISTANCE: 1000 MEGOHMS MIN @ 25°C.
4.5 MOISTURE RESISTANCE: IP67 (MATED CONDITION)
4.6 MATING CYCLE DURABILITY: 100 CYCLES
4.7 RoHS COMPLIANT

5. MATING PART: ATM06-12SX* PLUG.
(X = A,B,C,D KEYS; * = MODIFICATIONS AND COLORS)

6. ALL DIMENSIONS ARE FOR REFERENCE USE ONLY.

7 CONTACT SIZE AND REAR SEAL WIRE RANGE:

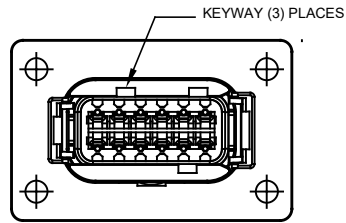
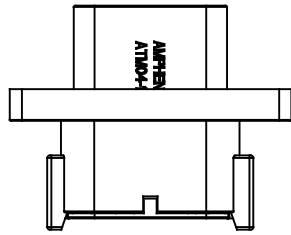
CONTACT SIZE	MIN. INSUL O.D.	MAX. INSUL O.D.	TYPICAL WIRE RANGE
20	1.35 mm (.053 in)	3.05 mm (.120 in)	16 - 22 AWG

SEE SHEET 2				
PART NUMBER		DESCRIPTION		ITEM
MATERIALS LIST				
UNLESS OTHERWISE SPECIFIED		SIGNATURES		DATE
1) All dimensions are in metric (mm).		DRAWN: ROOKIE		14/MAY/18
2) Tolerances are as follows:		CHECKED: ORION		14/MAY/18
1 PL DEC ±0.30		ENGINEER:		
2 PL DEC ±0.15		APPROVAL: TOMMY		14/MAY/18
3 PL DEC ±0.08		CUSTOMER:		
3) Note reference =		THIS DRAWING IS SUPPLIED FOR INFORMATION ONLY. DESIGN FEATURES, SPECIFICATIONS AND PERFORMANCE DATA SHOWN HEREON ARE THE PROPERTY OF THE AMPHENOL CORPORATION. NO RIGHTS OF REPRODUCTION ARE IMPLIED. ALL DIMENSIONS ARE SUBJECT TO NORMAL MANUFACTURING VARIATIONS.		
MATERIAL SPECIFICATIONS:		<p style="text-align: center;">Amphenol</p> <p style="text-align: center;">Sine Systems - www.amphenol-sine.com 44724 Morley Drive Clinton Township, MI 48036</p>		
PROCESS SPECIFICATIONS:		RECEPTACLE, KEYPED, 12 PIN, ATM SERIES, PANEL MOUNT		
NEXT ASSY:		SIZE: B	TYPE: C-	REVISION: A2
		SCALE: NONE	DWG NO: ATM04-12PX-PM01	SHEET 1 OF 3

TITLE: RECEPTACLE, KEYPED, 12PIN, ATM SERIES, PANEL MOUNT
DWG NO: ATM04-12PX-PM01
REV: A2
SH: 1
OF: 3

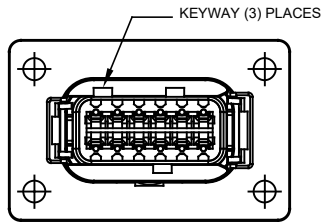
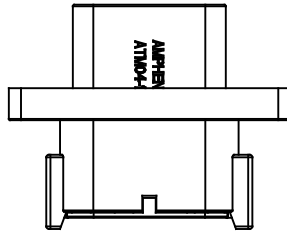
REVISIONS					
REV	ECO	DESCRIPTION	DATE	BY	APPR
A1	--	RELEASE NUMBER	20/NOV/17	ROOKIE	TOMMY
A2	C0866S	UPDATE DRAWING	14/MAY/18	ROOKIE	TOMMY

KEY A CONFLGURATION
STANDARD COLOR:GREY



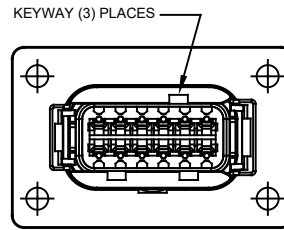
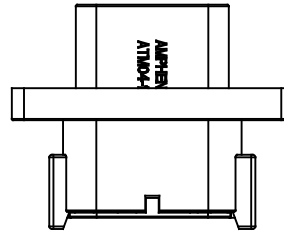
KEY-A CONFIGURATION	
COLOR	PART NUMBER
GREY	ATM04-12PA-PM01

KEY B CONFLGURATION
STANDARD COLOR:BLACK



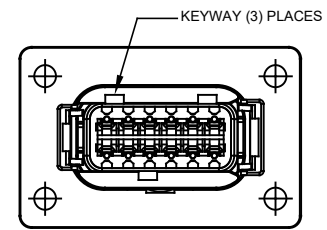
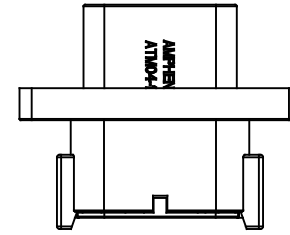
KEY-B CONFIGURATION	
COLOR	PART NUMBER
BLACK	ATM04-12PB-PM01

KEY C CONFLGURATION
STANDARD COLOR:GREEN



KEY-C CONFIGURATION	
COLOR	PART NUMBER
GREEN	ATM04-12PC-PM01

KEY D CONFLGURATION
STANDARD COLOR:BROWN

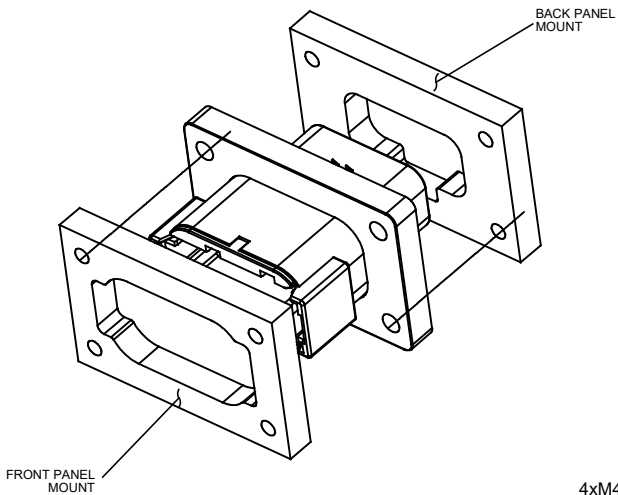


KEY-D CONFIGURATION	
COLOR	PART NUMBER
BROWN	ATM04-12PD-PM01

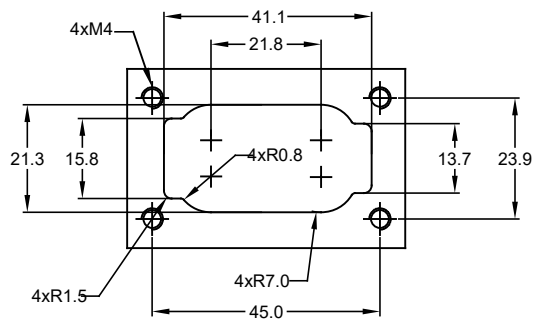
QUANTITY	PART NUMBER	DESCRIPTION	ITEM
MATERIALS LIST			
<small>UNLESS OTHERWISE SPECIFIED:</small> 1) All dimensions are in metric (mm). 2) Tolerances are as follows: 1 PL DEC ±0.30 Fractions ±1/64 2 PL DEC ±0.15 Angles ±1° 3 PL DEC ±0.08 3) Note reference =		SIGNATURES DATE DRAWN: ROOKIE 14/MAY/18 CHECKED: ORION 14/MAY/18 ENGINEER: APPROVAL: TOMMY 14/MAY/18	
MATERIAL SPECIFICATIONS: PROCESS SPECIFICATIONS: NEXT ASSY:		<div style="text-align: center;"> <h1>Amphenol</h1> <p>Sine Systems - www.amphenol-sine.com 44724 Morley Drive Clinton Township, MI 48036</p> </div> <p>RECEPTACLE, KEYED, 12 PIN, ATM SERIES,PANEL MOUNT</p>	
<small>THIS DRAWING IS SUPPLIED FOR INFORMATION ONLY. DESIGN FEATURES, SPECIFICATIONS AND PERFORMANCE DATA SHOWN HEREON ARE THE PROPERTY OF THE AMPHENOL CORPORATION. NO RIGHTS OF REPRODUCTION ARE IMPLIED. ALL DIMENSIONS ARE SUBJECT TO NORMAL MANUFACTURING VARIATIONS.</small>		SIZE: B C- SCALE: NONE	DWG NO: ATM04-12PX-PM01 REVISION: A2 SHEET 2 OF 3

TITLE: RECEPTACLE, KEYED A, 12 PIN, ATM SERIES,PANEL MOUNT DWG NO: ATM04-12PX-PM01 REV: A2 SH: 2 OF: 3

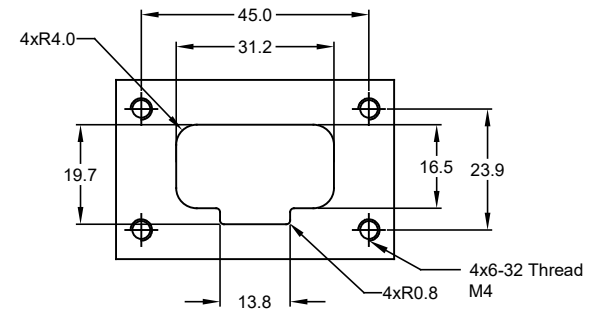
REVISIONS					
REV	ECO	DESCRIPTION	DATE	BY	APPR
A1	--	RELEASE NUMBER	20/NOV/17	ROOKIE	TOMMY
A2	C0866S	UPDATE DRAWING	14/MAY/18	ROOKIE	TOMMY



FRONT PANEL



BACK PANEL



RECOMMENDED MOUNTING HOLE

PART NUMBER		DESCRIPTION		ITEM
ATM04-12PX-PM01		RECEPTACLE, KEYPED, 12 PIN, ATM SERIES, PANEL MOUNT		3
QUANTITY				
MATERIALS LIST				
UNLESS OTHERWISE SPECIFIED: 1) All dimensions are in metric(mm). 2) Tolerances are as follows: 1 PL DEC ±0.30 Fractions ±1/64 2 PL DEC ±0.15 Angles ±1° 3 PL DEC ±0.08		SIGNATURES		DATE
DRAWN: ROOKIE		ORION		14/MAY/18
CHECKED: ORION		TOMMY		14/MAY/18
MATERIAL SPECIFICATIONS:		APPROVAL:		DATE
PROCESS SPECIFICATIONS:		CUSTOMER:		
NEXT ASSY:		THIS DRAWING IS SUPPLIED FOR INFORMATION ONLY. DESIGN FEATURES, SPECIFICATIONS AND PERFORMANCE DATA SHOWN HEREON ARE THE PROPERTY OF THE AMPHENOL CORPORATION. NO RIGHTS OF REPRODUCTION ARE IMPLIED. ALL DIMENSIONS ARE SUBJECT TO NORMAL MANUFACTURING VARIATIONS.		
SCALE: NONE		SIZE: B	TYPE: C-	DWG NO: ATM04-12PX-PM01
SHEET 3 OF 3		REVISION: A2		

TITLE: RECEPTACLE, KEYPED, 12 PIN, ATM SERIES, PANEL MOUNT
 DWG NO: ATM04-12PX-PM01
 REV: A2
 SH: 3
 OF: 3